



**PARENTS GUIDE  
TO**

***Victory FFA***

WHAT EVERY PARENT NEEDS TO KNOW TO HELP THEIR  
CHILD SUCCEED IN THE FFA PROGRAM

## **AGRICULTURE STUDENT LINGO**

### **TERMS YOU MAY HEAR AGRICULTURE STUDENTS USE**

**CDE (CAREER DEVELOPMENT EVENTS) – FFA/AGRICULTURE SKILL COMPETITIONS**

**LDE (LEADERSHIP DEVELOPMENT EVENTS) - FFA/AGRICULTURE LEADERSHIP COMPETITIONS**

**CREED – THE FFA CREED IS A 5 PARAGRAPH DOCUMENT TAUGHT TO ALL MEMBERS.**

**DEGREES – AWARD RECOGNIZE STUDENT PROGRESS AND SUCCESS IN LEADERSHIP, AG EDUCATION AND THEIR SAE.**

**PROFICIENCY - AWARD RECOGNITION FOR STUDENTS WITH AN OUTSTANDING SAE PROJECT.**

**DISTRICT - OUR FFA DISTRICT CONSISTS OF THESE FFA CHAPTERS : ALVORD, BELLEVUE, BOWIE, CHICO, DECATUR, FORESTBURG, GOLD BURG, HENRIETTA, JACKSBORO, MIDWAY, NOCONA, PETROLIA, PRAIRIE VALLEY, SAINT JO, & SLIDELL OUR DISTRICT IS KNOWN AS THE RED RIVER DISTRICT.**

**AREA- OUR FFA CHAPTER IS PART OF AREA IV. AREA IV CONSIST OF 6 DISTRICTS. BIG COUNTRY, PECAN VALLEY, RED RIVER, CROSS TIMBERS, OIL BELT, & WICHITA. THERE ARE 99 CHAPTERS IN OUR AREA & 10,954 MEMBERS.**

**FFA MOTTO – LEARNING TO DO, DOING TO LEARN, EARNING TO LIVE, LIVING TO SERVE**

**FFA MISSION –PREMIER LEADERSHIP, PERSONAL GROWTH, AND CAREER SUCCESS**

**AET – THE OFFICIAL RECORD OF A STUDENT'S SAE, DONE ONLINE THROUGH [WWW.THEAET.COM](http://WWW.THEAET.COM)**

**SAE- (SUPERVISED AGRICULTURAL EXPERIENCE) – INDIVIDUAL EXPERIENTIAL LEARNING THAT TAKES PLACE OUTSIDE OF THE CLASSROOM AND IS AGRICULTURE BASED.**



# Welcome

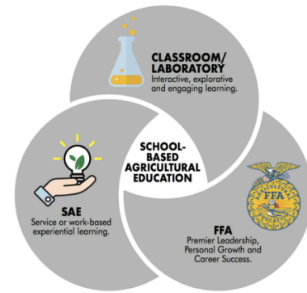
PARENTS,

THE FFA & 4-H ORGANIZATIONS HAVE A LOT TO OFFER YOUR SON OR DAUGHTER. WE STRONGLY ENCOURAGE PARENTS TO KNOW WHAT IS AVAILABLE SO THAT THEY CAN HELP THEIR CHILD TAKE ADVANTAGE OF ALL THE OPPORTUNITIES FFA & 4-H HAS TO OFFER. THIS SHORT GUIDE IS DESIGNED TO HELP PARENTS NAVIGATE THE FFA & 4-H ORGANIZATION AT THE CHAPTER & COUNTY LEVEL. HOPEFULLY THIS GUIDE CAN ANSWER A FEW QUESTIONS, AND MAYBE STIMULATE SOME CONVERSATIONS.

THE AGRICULTURE EDUCATION COURSES CONSIST OF THREE SEGMENTS:

- CLASSROOM INSTRUCTION - 70%
- SUPERVISED AGRICULTURE EXPERIENCE - 15%
- FFA - 15%

STUDENTS ENROLLED IN AGRICULTURE CLASSES HAVE THE OPPORTUNITY BECOME A MEMBER OF VICTORY FFA. DUES ARE \$40 AND COVER THE COST OF LOCAL, STATE AND NATIONAL REGISTRATION AS WELL AS THE ANNUAL VCA FFA SHIRT.



2023-2024 VICTORY FFA INSTRUCTOR AND FFA ADVISOR

Jennifer Pinkerton  
jennifer@victorychristianacademy.org  
Agriculture Science Teacher  
Victory FFA Advisor

Brooke Stewart  
brooke.stewart@victorychristianacademy.org  
Agriculture Science Teacher  
Victory FFA Advisor



### **WHAT IS FFA?**

FFA IS A DYNAMIC YOUTH ORGANIZATION WITHIN AGRICULTURAL EDUCATION THAT PREPARES STUDENTS FOR PREMIER LEADERSHIP, PERSONAL GROWTH, AND CAREER SUCCESS. FFA WAS CREATED IN 1928 AS THE FUTURE FARMERS OF AMERICA; HOWEVER, THAT NAME WAS CHANGED TO THE NATIONAL FFA ORGANIZATION IN 1988 TO REFLECT THE GROWING DIVERSITY OF AGRICULTURE. TODAY, MORE THAN 700,000 STUDENT MEMBERS ARE ENGAGED IN A WIDE RANGE OF AGRICULTURAL EDUCATION ACTIVITIES, LEADING OVER 300 CAREER OPPORTUNITIES IN THE AGRICULTURAL SCIENCE, FOOD, FIBER AND NATURAL RESOURCES INDUSTRY. STUDENT SUCCESS STILL REMAINS THE PRIMARY MISSION OF THE FFA.

### **FFA AND AGRICULTURAL EDUCATION**

FFA MEMBERS ARE PART OF A TOTAL AGRICULTURAL EDUCATION PROGRAM THAT CONNECTS STUDENTS TO EXCITING CAREERS IN THE SCIENCE, BUSINESS AND TECHNOLOGY OF AGRICULTURE. FFA IS ONLY ONE OF THE THREE ESSENTIAL COMPONENTS OF THE PROGRAM, ALL OF WHICH WORK TOGETHER TO PROVIDE MEMBERS WITH LEADERSHIP, ACADEMIC AND CAREER EXPERIENCES ESSENTIAL FOR SUCCESS.

### **A BRIEF HISTORY OF THE FFA**

FOUNDED IN 1928, THE FUTURE FARMERS OF AMERICA BROUGHT TOGETHER STUDENTS, TEACHERS AND AGRIBUSINESS TO SOLIDIFY SUPPORT FOR AGRICULTURAL EDUCATION. IN KANSAS CITY'S BALTIMORE HOTEL, 33 YOUNG FARM BOYS CHARTED A COURSE FOR THE FUTURE. THEY COULD NOT HAVE FORESEEN HOW THE ORGANIZATION WOULD GROW AND THRIVE. SINCE 1928, MILLIONS OF AGRICULTURE STUDENTS - NO ONE KNOWS EXACTLY HOW MANY - HAVE DONNED THE OFFICIAL FFA JACKET AND CHAMPIONED THE FFA CREED. FFA HAS OPENED ITS DOORS AND ITS ARMS TO MINORITIES AND WOMEN, ENSURING THAT ALL STUDENTS COULD REAP THE BENEFITS OF AGRICULTURAL EDUCATION. TODAY, THE NATIONAL FFA ORGANIZATION REMAINS COMMITTED TO THE INDIVIDUAL STUDENT, PROVIDING A PATH TO ACHIEVEMENT IN PREMIER LEADERSHIP, PERSONAL GROWTH AND CAREER SUCCESS THROUGH AGRICULTURAL EDUCATION. NOW, THE ORGANIZATION IS EXPANDING THE NATION'S VIEW OF "TRADITIONAL" AGRICULTURE AND FINDING NEW WAYS TO INFUSE AGRICULTURE INTO THE CLASSROOM.

### **PROGRAM OF ACTIVITIES (POA)**

THE PROGRAM OF ACTIVITIES (POA) IS THE FOWLER FFA CHAPTER CALENDAR FOR THE SCHOOL YEAR. THESE ACTIVITIES WILL INCLUDE JUDGING EVENTS, COUNTY FAIR, CHAPTER MEETINGS, FIELD TRIPS, AND COMPETITIONS. ASK YOUR STUDENT OR AGRICULTURE ADVISOR IF YOU ARE INTERESTED IN GOING ON SOME OF THE TRIPS AS A CHAPERONE OR DRIVER. A COPY OF THIS CALENDAR WILL BE GIVEN TO EVERY STUDENT AT THE BEGINNING OF EACH YEAR TO HELP PARENTS AND STUDENTS PLAN ACCORDINGLY. YOU WILL ALSO FIND THIS CALENDAR OF EVENTS (POA) IN THIS GUIDE.



**THE SUPERVISED AGRICULTURAL EXPERIENCE PROGRAM (SAE)**

SAE: LEARNING BY DOING - A SUPERVISED AGRICULTURAL EXPERIENCE PROGRAM (SAE) IS A KEY COMPONENT OF AGRICULTURAL EDUCATION. WHILE WORKING ON AN SAE PROJECT, STUDENTS LEARN TO APPLY THE CONCEPTS AND PRINCIPLES TAUGHT IN THEIR AGRICULTURE CLASSES TO REAL-WORLD PROBLEMS AND SCENARIOS. A STUDENT SELECTS AN SAE PROJECT BASED ON HIS OR HER INTEREST IN ONE OF FOUR AREAS:

- **EXPLORATORY** - LEARN ABOUT THE BIG PICTURE OF AGRICULTURE AND ITS MANY RELATED CAREERS.
- **RESEARCH/EXPERIMENTATION AND ANALYSIS** - CONDUCT RESEARCH AND ANALYZE INFORMATION TO DISCOVER NEW KNOWLEDGE.
- **OWNERSHIP/ENTREPRENEURSHIP** - PLAN AND OPERATE AN AGRICULTURE-RELATED BUSINESS.
- **PLACEMENT/WORK EXPERIENCE** - WORK FOR A BUSINESS OR INDIVIDUAL, EITHER FOR PAY OR FOR THE EXPERIENCE.

**THE CAREER OR LEADERSHIP DEVELOPMENT EVENTS (CDE OR LDE)**

FOR STUDENTS WHO ASK THEIR TEACHERS "WHEN WILL I EVER USE THIS IN THE REAL WORLD?" CAREER DEVELOPMENT EVENTS (CDES) AND LEADERSHIP DEVELOPMENT EVENTS (LDES) ARE THE ANSWER. SINCE 1928, FFA HAS WORKED TO CREATE CDES THAT DEMONSTRATE THE MEANINGFUL CONNECTIONS BETWEEN CLASSROOM INSTRUCTION AND REAL-LIFE SCENARIOS CDES BUILD ON WHAT IS LEARNED IN AGRICULTURAL CLASSES AND THE FFA. THE EVENTS ARE DESIGNED TO HELP PREPARE STUDENTS FOR CAREERS IN AGRICULTURE. CLASSROOM INSTRUCTION COMES ALIVE AS STUDENTS DEMONSTRATE THEIR SKILLS IN A COMPETITIVE SETTING. CDE'S TEST THE ABILITIES OF INDIVIDUALS AND TEAMS IN OVER 30 MAJOR AREAS OF AGRICULTURAL INSTRUCTION. STUDENTS CAN PARTICIPATE IN THE FOLLOWING CONTESTS:

**LDE CONTESTS**

CREED SPEAKING  
PREPARED PUBLIC SPEAKING  
EXTEMPORANEOUS PUBLIC SPEAKING  
JOB INTERVIEW  
FFA KNOWLEDGE- QUIZ  
PUBLIC RELATIONS  
ADVOCACY  
RADIO

**CDE CONTESTS**

FLORICULTURE  
HORSE EVALUATION  
LIVESTOCK EVALUATION  
MEAT EVALUATION



### **FFA OFFICIAL DRESS (OD).**

AS FFA MEMBERS, WE HAVE THE OPPORTUNITY TO IMPACT MANY PEOPLE WHO MAY OR MAY NOT BE FAMILIAR WITH THE ORGANIZATION: COMMUNITY RESIDENTS, BUSINESSMEN AND WOMEN, FFA SPONSORS, GUESTS, PARENTS, ETC. THEREFORE, FIRST IMPRESSIONS ARE CRUCIAL, AND THAT INVOLVES THE WAY WE DRESS. ALL FFA MEMBERS ARE REQUIRED TO WEAR OFFICIAL DRESS WHILE PARTICIPATING IN OFFICIAL ACTIVITIES.

### **OFFICIAL DRESS INCLUDES:**

- BLACK PANTS OR SKIRT (LADIES)
  - SKIRT IS TO BE AT LEAST KNEE LENGTH, HEMMED EVENLY ACROSS THE BOTTOM, WITH A SLIT NO LONGER THAN 2 INCHES ABOVE THE KNEE, EXCLUDING THE KICK PLEAT.
  - SKIRTS ARE USUALLY RECOMMENDED IN MORE OF THE PROFESSIONAL EVENTS SUCH AS CONFERENCES AND SPEAKING COMPETITIONS.
- BLACK SLACKS OR JEANS MAY BE APPROPRIATE FOR TRAVELING AND OUTDOOR ACTIVITIES.
- WHITE COLLARED DRESS SHIRT/BLOUSE
- OFFICIAL FFA BLUE SCARF OR TIE
- BLACK DRESS SHOES WITH A CLOSED HEEL AND TOE
  - DEPENDING ON THE EVENT BOOTS MAY OR MAY NOT BE RECOMMENDED
- BLACK NYLON HOSIERY OR BLACK SOCKS
- OFFICIAL FFA JACKET ZIPPED TO THE TOP



### **WHERE TO PURCHASE???**

YOU CAN PURCHASE THESE ITEMS ON AMAZON, WALMART, JC PENNY OR ANY DEPARTMENT STORE IN THE MENS OR WOMENS SECTION.

VISIT [WWW.SHOPFFA.ORG/PRODUCTS](http://WWW.SHOPFFA.ORG/PRODUCTS) FOR MORE FFA GEAR!

**VICTORY FFA STUDENT LEADERSHIP**

**VICTORY FFA EVENTS AND ACTIVITIES ARE ORGANIZED AND EXECUTED BY THE FFA OFFICER TEAM AND COMMITTEE MEMBERS. ANY FFA MEMBER CAN BECOME A MEMBER OF AN FFA COMMITTEE. ELIGIBLE FFA MEMBERS CAN RUN FOR OFFICE. FFA ADVISORS (TEACHERS) ADVISE AND SUPERVISE STUDENT LEADERS AND FFA MEMBERS. EACH YEAR CHAPTER OFFICER APPLICATIONS ARE MADE AVAILABLE TO STUDENTS TO COMPLETE IF THEY DESIRE TO SERVE AS A CHAPTER FFA OFFICER.**

**2023-2024 CHAPTER OFFICER TEAM**

PRESIDENT - ISIAH HERNANDEZ

1ST VICE PRESIDENT - LINDIE CARPENTER

2ND VICE PRESIDENT- DRYCE NEELEY

SECRETARY - ROGER HERNANDEZ

TREASURER - CODY BARNETT

REPORTER - EMILY DENOON

ADVISOR- KARIS MOSS

SENTINEL- CASH HINKLE

CHAPLAIN- RILEY ALEXANDER

HISTORIAN- JESS HENDERSON



# FUNDRAISING

## FALL

- FLORAL SUBSCRIPTIONS
  - SOLELY FUNDS THE FLORAL PROGRAM
  - SALES END SEPT. 15
- CASSEROLE SUBSCRIPTIONS
  - SOLELY FUNDS THE FOOD TECHNOLOGY PROGRAM
  - SALES END SEPT. 15
- POINSETTIA, MUM AND PUMPKIN SALES

## SPRING

- YOUTH FAIR CONCESSIONS
  - FULL WEEK AND RODEO
- VICTORY INVITATIONAL SPEAKING CONTEST
- ROPING (MANDATORY)
  - FIRST WEEKEND IN APRIL

## WHAT IS THE MONEY USED FOR?

OUR PROJECTED OPERATING BUDGET IS APPROXIMATELY \$56,000 YEARLY. THIS INCLUDES MEMBERSHIP FEES AT THE DISTRICT, AREA, STATE AND NATIONAL LEVEL, CURRICULUM, RECORD BOOK SUBSCRIPTIONS, MEETING ALLOWANCE, BANQUET AND AWARDS, FUNDRAISER INPUT, CONTEST MATERIALS, ENTRIES AND TRAVEL EXPENDITURES, BUYER'S CLUB AUCTION ITEMS, IT HELPS WITH OFFICER AND ADVANCING MEMBERS EXPENSES AND TEACHER TRAVEL. IT ALLOWS US TO GROW OUR PROGRAM AND ADD THINGS BEYOND THE BASIC OPERATIONAL COSTS. WE HAVE BIG GOALS FOR OUR PROGRAM- OUR NEXT GOALS INCLUDE A LIVESTOCK TRAILER AND A SCHOOL BARN.

## BUYERS CLUBS

ALL PARENTS OF STUDENTS PARTICIPATING IN WCYF WILL BE REQUIRED TO PARTICIPATE. THESE ARE PARENT/COMMUNITY ORGANIZATIONS THAT RAISE FUNDS TO REWARD STUDENTS PARTICIPATING IN THE WISE COUNTY YOUTH FAIR. THERE ARE TWO CLUBS THAT EACH HOLD AN EVENT THAT WE NEED TO SUPPORT. THE WISE AG YOUTH SYNDICATE (BLUE RIBBON BASH) AND THE DECATUR YOUTH FAIR BUYERS ASSOCIATION (SPORTSMAN BANQUET) THE SYNDICATE PURCHASES ALL GRAND/RESERVE ENTRIES AND THE BUYERS CLUB PURCHASES ALL OTHER PROJECTS THAT MAKE THE AUCTION. THIS INCLUDES ANIMALS, BAKED GOODS, HORTICULTURE PROJECTS ETC. THEY BOTH OFFER SCHOLARSHIPS TO THOSE STUDENTS THAT HAVE BEEN INVOLVED. INVOLVEMENT IN THESE RANGES FROM HELPING PREPARE FOR THE EVENT, RAISING FUNDS AND ASSISTING AT THE EVENT. IF YOUR STUDENT MAKES THE AUCTION AT WISE COUNTY YOUTH FAIR WITH ANY PROJECT(CAKE, ANIMAL, FLOWERS, ETC.) AND YOU ARE NOT A PARTICIPATING MEMBER OF THE DECATUR YOUTH FAIR BUYER'S ASSOCIATION YOU WILL BE REQUIRED TO PAY A FEE TO THE PURCHASING COMMITTEE DETERMINED BY VCA ADMINISTRATION.





## HOBBY CLASS AND MOCK INTERVIEW VOLUNTEERS

### HOBBY CLASSES

WE WILL CONTINUE WITH OUR VERY POPULAR BAKING, CRAFTS, PHOTOGRAPHY CLASSES THIS YEAR. THESE ARE 45 MIN CLASSES WHERE A MEMBER OF OUR COMMUNITY TEACHES STUDENTS 3RD-12TH GRADE (GENERALLY GEARED TOWARDS 3RD-7TH GRADE) A SKILL IN ONE OF THOSE AREAS. FOR EXAMPLE, LAST YEAR WE DID WREATH MAKING, CAKE LAYERING, COOKIE DECORATING, FLORAL DESIGN, ETC. I WOULD LOVE TO SEE SOME CRAFTS GEARED TOWARDS OUTDOORS OR THAT MAY INTEREST THE YOUNG MEN IN OUR PROGRAM. PLEASE CONSIDER SHARING YOUR TALENTS WITH OUR AWESOME FFA STUDENTS. ONLY ONE IN EACH CATEGORY(BAKING/CRAFT/PHOTOGRAPHY) PER DATE PLEASE. CLASSES WILL TAKE PLACE AT VCA IN THE AG PORTABLE OR GYM FOYER BASED ON CLASS SIZE. STUDENTS WILL SIGN UP THE WEEK PRIOR TO YOUR SCHEDULED TIME. SUPPLY FEES WILL BE COVERED BY THE STUDENTS/CHAPTER/CLUB.

### MOCK INTERVIEWS

OUR FFA STUDENTS FIND THEMSELVES DOING INTERVIEWS FOR OFFICER POSITIONS, AWARDS, LEADERSHIP OPPORTUNITIES AND SCHOLARSHIPS THROUGHOUT THEIR HIGH SCHOOL CAREERS. BY HELPING DEVELOP THESE SKILLS WE ARE ENSURING THEIR SUCCESS IN THEIR HIGH SCHOOL ENDEAVORS AND WHEN ENTERING THE WORKFORCE! I AM HAPPY TO PROVIDE QUESTIONS BUT WOULD LOVE FOR YOU TO PUT YOUR OWN SPIN ON THEM AS WELL. EACH INTERVIEW SHOULD BE APPROXIMATELY 5 MIN. YOU MAY INTERVIEW ALONE OR BRING SOMEONE WITH YOU TO ASSIST IN THE INTERVIEW. INTERVIEWS WILL TAKE PLACE IN THE VCA AG PORTABLE.

### BEGINNING OF THE YEAR REMINDERS!

#### **GET YOUR MEMBERSHIP FORM AND ENROLLMENT DONE!**

MANDATORY FUNDRAISERS:

1. HELPING WITH THE VICTORY 4-H AND FFA ROPING
    - A. VOLUNTEERING
    - B. AUCTION ITEMS
    - C. SPONSORSHIPS
  2. PARTICIPATION IN BUYER'S CLUBS IF PLANNING TO BE INVOLVED IN THE YOUTH FAIR
  3. CONTRIBUTING TO YOUTH FAIR CONCESSION STAND
- PLEASE LET AN AG TEACHER KNOW ASAP IF YOU ARE INTERESTED IN OUR LIVESTOCK SHOW TEAM.
  - TO ENTER MAJOR LIVESTOCK SHOWS YOU MUST COMPLETE QUALITY COUNTS AND YOUR ANIMAL MUST BE VALIDATED(COUNTY REQUIREMENT ALSO).

FLORAL SUBSCRIPTION  
INFORMATION AND FORM



CASSEROLE SUBSCRIPTION  
INFORMATION AND FORM



**HOW TO GET STARTED?**

**FFA-** FILL OUT THE MEMBERSHIP FORM AT THE QR CODE BELOW AND PAY YOUR DUES TO MRS. STEWART OR MRS. PINKERTON VIA CASH OR CHECK OR VIA VENMO (@VCAAG). ALL MEMBERS WILL RECEIVE A T-SHIRT AS PART OF THEIR MEMBERSHIP DUES. ADDITIONAL APPAREL MAY BE ORDERED AT THE QR CODE BELOW. JUNIOR MEMBERS (3RD-7TH) \$40. ACTIVE MEMBERS \$40. EVERYONE MUST SIGN-UP AND PAY EVERY YEAR. OFFICERS INCLUDED.

**BEFORE SEPT. 15!**

MEMBERSHIP FORM



ADDITIONAL APPAREL



4-H- SIGN UP/PAY ONLINE AT TEXAS 4-H ONLINE

**AFTER SEPT.1 BEFORE DEC. 1!**

**EVERYONE MUST SIGN-UP AND PAY EVERY YEAR.**

[HTTPS://TEXAS.4HONLINE.COM/#/USER/SIGN-IN](https://TEXAS.4HONLINE.COM/#/USER/SIGN-IN)

**WHAT TO EXPECT?**

MONTHLY MEETINGS. GETTING OUT OF YOUR COMFORT ZONE. GOAL SETTING. CAREER AND COLLEGE EXPLORATION. ACHIEVEMENT AND SCHOLARSHIP OPPORTUNITIES. FUN EVENTS. RELATIONSHIP BUILDING. FUNDRAISING. LEADERSHIP TRAINING. COMPETITION AND TRAVEL OPPORTUNITIES.

**WHAT IS REQUIRED OF MEMBERS?**

ATTEND MEETINGS AND PARTICIPATE IN MANDATORY FUNDRAISERS.  
BE OPEN-MINDED AND HAVE A POSITIVE ATTITUDE.  
WORK HARD

**WHAT IS REQUIRED OF PARENTS?**

ENCOURAGE YOUR STUDENTS TO BE OPEN-MINDED AND HAVE A POSITIVE ATTITUDE.  
PARTICIPATE IN MANDATORY FUNDRAISERS.  
READ THE WEEKLY EMAIL UPDATES.  
PAY FFA BALANCE MONTHLY. (TRAVEL, CONTEST, CAMPS, ETC.)

**(STUDENTS WILL NOT BE ELIGIBLE FOR ADDITIONAL TRAVEL, CONTESTS, ETC. IF THEY HAVE AN OUTSTANDING BALANCE- PLEASE KEEP IN MIND THAT REGISTRATION OPENS AND CLOSES WELL IN ADVANCE OF EVENTS, PAYMENT PLANS CAN BE SET UP IF ADVANCE NOTICE IS GIVEN.)**



**\_FFA OR 4-H?**

**BOTH!**

**WHAT IS THE DIFFERENCE?**

FFA IS DIRECTLY TIED TO AGRICULTURE CLASSES AND IS SOLELY LED BY AND UNDER THE DIRECTION OF THE FFA ADVISORS.

4-H IS A MORE INDEPENDENT PROGRAM. IT IS MEANT FOR YOUR CHILD TO DISCOVER THEIR INDIVIDUAL TALENTS AND INTERESTS. IT IS PARENT OR COMMUNITY VOLUNTEER LED UNDER DIRECTION AND GUIDANCE OF THE CLUB MANAGER->VICTORY CHRISTIAN ACADEMY->COUNTY EXTENSION.

FFA PROVIDES MORE SPECIALIZED OPPORTUNITIES FOR TRAVEL, LEADERSHIP AND CONNECTION TO THOSE IN 8TH-12TH GRADE. IT IS SCHOOL BASED.

4-H PROVIDES A WIDE VARIETY OF OPPORTUNITIES FOR STUDENTS IN 3RD-12TH GRADE WITHOUT AS MUCH INVOLVEMENT AND DIRECTION FROM THE SCHOOL, ADVISORS AND FFA PROGRAM.

**WHY BOTH?**

BOTH ORGANIZATIONS ARE IN THE BUSINESS OF BUILDING LEADERS AND HELPING YOUNG PEOPLE CREATE A SUCCESSFUL FUTURE THROUGH PUTTING THEIR TALENTS AND INTERESTS TO WORK.

4-H IS GREAT FOR DISCOVERING INTERESTS AND FFA IS WONDERFUL FOR REALLY FOCUSING ON PUTTING THEM IN MOTION FOR A SUCCESSFUL FUTURE.

THEY WORK HAND-IN-HAND, TEACH A LOT OF THE SAME SKILLS AND OFFER A LOT OF EQUIVALENT OPPORTUNITIES. IRON SHARPENS IRON.

FOR EXAMPLE, YOUR STUDENT IS INVOLVED IN PUBLIC SPEAKING- THEY MAY COMPETE AT BOTH 4-H AND FFA CONTESTS. SAME FOR JUDGING, SHOWING AND OTHER OPPORTUNITIES.

BEING IN BOTH ORGANIZATIONS PROVIDES DOUBLE THE OPPORTUNITIES FOR SCHOLARSHIP, LEADERSHIP AND FELLOWSHIP.



**WHAT CAN PARENTS DO TO ENSURE SUCCESS IN THE VICTORY AG PROGRAM?**

- ASK ABOUT HIS/HER SAE:
  - WHAT ARE HIS/HER SAE GOALS?
  - HOW MANY HOURS IS HE/SHE WORKING? ARE THE RECORD BOOKS UP TO DATE?
- EMAIL OR CALL HIS/HER AGRICULTURE TEACHER.
- COMMUNICATE WITH THE AGRICULTURE TEACHERS ABOUT ANY CONCERNS OR QUESTIONS YOU MAY HAVE.
- KEEP FFA EVENTS ON YOUR FAMILY CALENDAR.
- ENCOURAGE YOUR CHILD TO ATTEND FFA ACTIVITIES.
- PARENTS ARE ALSO ENCOURAGED TO ATTEND COMMUNITY FFA ACTIVITIES
- ENCOURAGE YOUR CHILD TO COMPETE. NO EXPERIENCE NECESSARY.
- FILL OUT THE TRAVEL WAIVER SO YOUR CHILD CAN ATTEND TRIPS.
- SHARE ANY AGRICULTURALLY RELATED NEWSPAPER, MAGAZINE ARTICLES, OR MEDIA WITH YOUR CHILD.
- ENCOURAGE PRACTICE AT HOME
- ENCOURAGE YOUR CHILD TO APPLY FOR FFA DEGREES.
- FILL OUT THE MEMBERSHIP FORM
- READ THE NEWSLETTER EACH WEEK!!

*VISIT [WWW.FFA.ORG](http://WWW.FFA.ORG) TO LEARN MORE ABOUT FFA OPPORTUNITIES.*

*FOLLOW US ON SOCIAL MEDIA FOR REGULAR UPDATES*

*FACEBOOK  
VICTORY FFA*

*VICTORY WEBSITE  
VICTORY FFA*

*[HTTPS://WWW.FACEBOOK.COM/VICTORYFFA](https://www.facebook.com/victoryffa) [HTTPS://VICTORYCHRISTIANACADEMY.ORG/VICTORY-FFA-4H](https://victorychristianacademy.org/victory-ffa-4h)*

