



GATLINBURG, TN

DATES

June 2 - June 8 June 30 - July 6
 June 9 - June 15 July 7 - July 13
 June 16 - June 22 July 14 - July 20
 June 23 - June 29

LODGING

Our accommodations are in the dorm buildings in Seymour TN. There will be about 1 to 4 people in a room with a bathroom and showers in each hallway. Men and women will be housed separately. There are twin mattresses on bed frames and on the floor.

Meals and chapel will be on campus. Our housing location is in a beautiful mountain setting with plenty of outdoor recreation areas for kickball and games as well as indoor game space.

PROJECTS

You will be doing some form of a hands-on project like painting, landscaping, and/or building for a homeowner or a ministry. This could include but is not limited to ramps, decks, roofs, painting, landscaping, drywall, framing, sheds, and more projects. You will have staff on-site leading you through the projects.

CHAPEL

We will have Chapel every night. This will include announcements, games, mission site stories, worship, and a message all led by our summer staff at each location. On Thursday, we will have an opportunity for each student and chaperone to participate in a response time as a group at the cross.

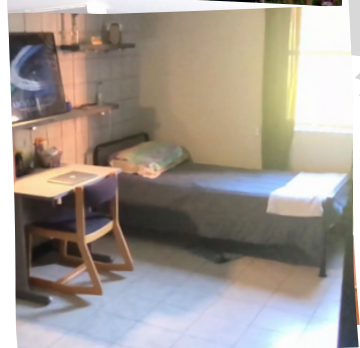
Join us this summer to take a deeper look at scripture and how it applies to our lives. You will also hear the testimonies from our staff each night.

2024



“They gave a week out of their summer to help people like me. They worked so hard and it was even 90 degrees. I am so grateful. The youth were so pleasant and thoughtful and impressive with their construction skills.”

-Homeowner



“I look forward to camp year round! I love helping people and learning new building skills. I think my favorite part has to be chapel! I always go home feeling so excited!”

-Camper for 6 years



GATLINBURG, TN

2024

AREA ACTIVITIES

Nearby Gatlinburg, Pigeon Forge, and Knoxville areas with attractions like Dollywood, The Island, Anakesta, strip in Gatlinburg, River Rafting, Basketball Hall of Fame, Dave and Busters, Smokies Baseball Stadium, more.



PRICING

\$379 Per Person (campers and chaperones) which includes housing, the majority of the meals, project tools, project materials, staff on your site to lead projects, and chapel programming.

You will be responsible for transportation, 2 lunches and 2 dinners during your free time, and your free time excursions.

HOW TO REGISTER

You can register online or over the phone. Scan the QR code OR go to our website OR call the office to chat with our registrar. The next page is all the details that go into planning a trip with us from your perspective.



SCHEDULE

Sunday:

- 5 PM to 7 PM: Check-In
- *Dinner Not Provided
- Chapel & Group Discussion Time
- Lights Out/In Rooms

Monday-Wednesday:

- Breakfast, Prep Lunches
- Leave for Mission Site
- Lunch on Mission Site
- Back to Work
- Head back to the Housing Facility
- Dinner & Free Time
- Chapel & Group Discussion Time
- Lights Out/In Rooms

Thursday:

- Breakfast and Devotion
- Head to Mission Site
- Leave Mission Site at Noon
- Free Half-Day
- *Lunch and Dinner Not Provided
- Closing Chapel & Reflection Time
- Lights Out/In Rooms

Friday:

- Continental Breakfast at a time you chose
- Free Day
- *Lunch and Dinner Not Provided
- Optional Friday Night Fellowship

Saturday:

- Continental Breakfast at a time you chose
- Check Out by 10 AM

THEME DAYS

Monday: Merica Monday

Tuesday: Tie Dye Tuesday

Wednesday: Work Shirt Wednesday

Thursday: Tropical Thursday



800-989-1507

WWW.TEAMEFFORT.ORG

INFO@TEAMEFFORT.ORG

YOUTH LEADER CHECKLIST



FIRST 30 DAYS

- ☐ A deposit of \$100 per participant, of which \$50 is non-refundable or transferable, is due within 30 days of registering. Payments can be made via check or credit card (3% transaction fee).
- ☐ Log in to the online account to make payments and access financial info.
- ☐ Print the Camp Brochure and Packing List for your students and chaperones.

BEFORE APRIL 1ST

- ☐ Call TEAMeffort with any changes to your reservation number.
- ☐ April 1st is the deadline for deposits to be transferable and refundable. After April 1st, deposits and payments are no longer transferable or refundable.

BEFORE YOUR TRIP

- ☐ Final balances are due 30 days before your scheduled trip. Payments cannot be handled at check-in.
- ☐ Everyone, including chaperones, must have a *notarized* TEAMeffort Permission Slip and Release of Liability form to attend. Each group needs one signed copy of the Code of Conduct. These forms can be found on our website.
- ☐ Begin collecting information about dietary and medical needs from your group. The camp director will ask for this information before your trip.
- ☐ Begin planning your free time plans regarding Half Day Thursday and all day Friday excursion and the 4 meals during that free time.

TWO WEEKS BEFORE ARRIVAL

- ☐ Trip information as well as a Group Information Form will be sent to you via email two weeks before your trip; complete as soon as possible. We use this information to plan your trip, please contact us if there are any changes.
- ☐ Gather all *notarized* Permission Forms and the Code of Conduct to bring to check in.

DONT FORGET

- ☐ Every participant should have an up-to-date tetanus shot and health insurance at the time of the trip.
- ☐ Check-in on Sunday night is from 5P to 7P and Chapel is at 8P. Dinner is not served at camp on Sunday night.
- ☐ TEAMeffort does not provide transportation. You will need transportation to and from the mission site each day.
- ☐ Prayerfully consider recommending students for TEAMeffort Staff. We offer your group one free registration for each new staff hired by TEAMeffort.



← **FOR CAMP FORMS,
SCAN THIS QR CODE.**

**FOR MORE FINANCIAL
& REGISTRATION INFO,
SCAN HERE.**



← **LOG IN TO YOUR
ACTIVWORKS
ACCOUNT HERE.**



800-989-1507

WWW.TEAMEFFORT.ORG

INFO@TEAMEFFORT.ORG