

Quorn Baptist Church

Meeting Street, Quorn, Loughborough, LE12 8AQ

Telephone: 01509 621106

www.QuornBC.org ~ Like us on Facebook 

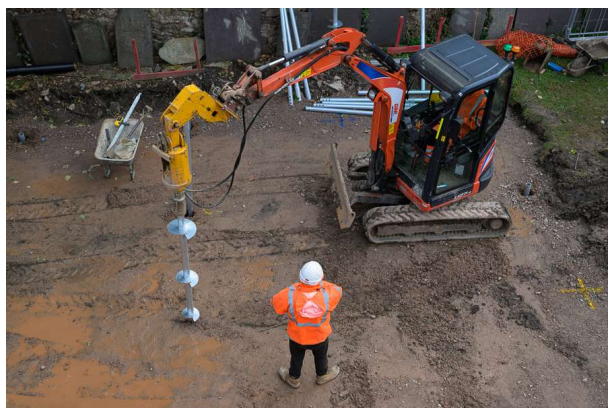


New Annexe and Accessibility Improvements – Quorn Baptist Church

Final Report – August 2025

Construction

Following the receipt of planning permission and listed building consents, our contractors MayWay Construction started work on site in early September 2024. By Christmas the roof was in place and by early January the doors and windows had been fitted so that interior work could continue in a weatherproof building.

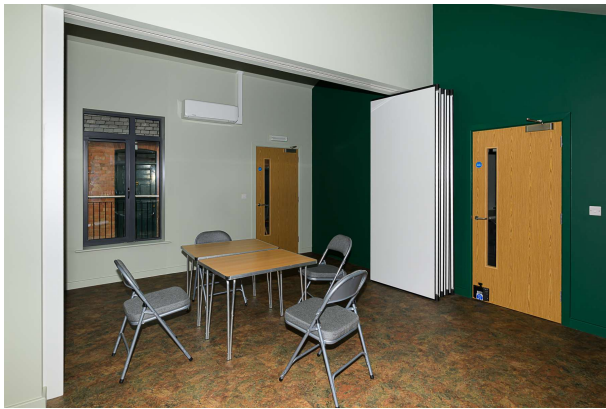


The certificate of practical completion for MayWay's contract was issued by the contract administrator on 27 March 2025. Additional internal work such as fitting the kitchenette in the Welcome Street, decorating, assembling furniture and also external landscaping was carried out after this time by other contractors and church members.



Minister:	Rev I.N.H. Smith, 23 Cradock Drive, Quorn, Loughborough, LE12 8ER
Secretary:	A. Leishman, 6 Ellis Close, Quorn, Loughborough, LE12 8SH
Treasurer:	D. Bates, 23 Alexander Road, Quorn, Loughborough, LE12 8EQ

Member of the Baptist Union (G.B.) and the Evangelical Alliance ~ Registered Charity No. 1148704



Funding

The project has been funded by donations from Church members, a loan from the Baptist Building CIO and grants from the Beatrice Laing Trust, Benefact Trust, Garfield Weston Foundation, Hobson Charity and the Norwood and Newton Settlement. Improvements to access in the existing building were supported by the Leicestershire Historic Churches Trust. All grants and the loan have been received and the project has been completed within budget. Repayments of the loan are funded from gifts which have been pledged by church members.

Opening

The extension was formally opened on 17 May 2025 with the cutting of a ribbon at each of the three entrances by the Mayor of Charnwood and the Chairman of Quorn Parish Council, the Headteacher of St Bartholomew's Primary School and the leader of the Ranger Guides and by two long-standing members of the church. The opening ceremony was attended by over 150 people.



Impact and Usage so far

The Welcome Street is in regular use after church services and is encouraging more interaction within the fellowship. The improved step free access from the chapel is also appreciated by all who use the church. The new meeting rooms and the modified hall were used for Easter workshops for Years 3 and 4 and "Moving On" workshops for Years 5 and 6 from the village school. A summer Holiday Club for primary age school children made full use of the new facilities. A monthly support group for people with cancer will start in September.

We have had a number of enquiries about hiring the new facilities.

The project has been shortlisted for the "small non-residential" category of the 2025 ProCon Leicestershire awards. The judges visited in August but the results will not be known until November this year.