

# GUIDING LIGHT ASSEMBLY

Vision Sunday 2026





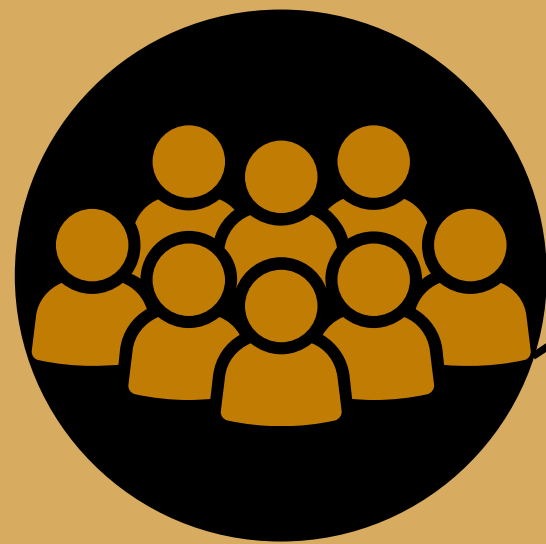
# THE GLA VISION

To see the knowledge of the Kingdom of God  
cover the whole earth as the waters cover the seas

# THE MISSION

Building leaders, changing our world, from  
generation to generation





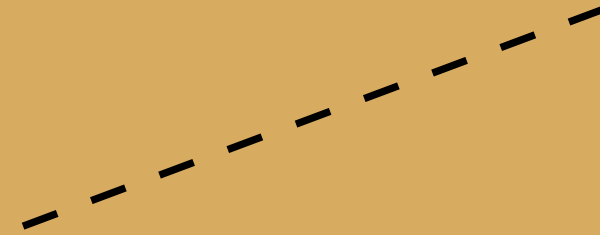
**Crowd**



**Congregation**



**Community**



# GLA STRUCTURE



**Pastor Wale Adefarasin**  
General Overseer



**Board of Trustees**



**Pastor Alicia**



**Pastor of Lighthouse**



**Pastor, Leadership Ministry**



**Pastor, Fellowships**



**Pastor, GLA Online Missions**



**Pastor, Outreach**



**Resident Pastor**



**Pastor Ayomide**



**Deaconry**



**HODs**

# BOARD OF TRUSTEES



- **Dcn Chuma Anosike**
- **Mrs Teju Abisoye**
- **Dcn Dupe Adebisi**
- **Dcn Tayo Oduwole**
- **Dcn Austin Abibo**
- **Dcn Adegbemiga Adetayo**
- **Mrs Yinka Adelekan**
- **Dcn Dele Badejo**
- **Dcn Obosa Akpata**

## RESPONSIBILITIES

- Receiving all income and gifts to the church including tithes, offerings and donations from members
- Opening bank accounts in GLA's name and making regulations for the operation of such accounts
- Setting the financial and accounting policies of the church
- Keeping up-to-date records of the church's assets and liabilities and all the church's financial transactions
- Arranging both internal and external audit of the church's accounts
- Determining the terms and conditions of employment of all persons employed by the church



**Pastor Damilola Emmanuel**  
Pastor, Lighthouse



**Toritseju Olaitan**  
Deputy Head, Lighthouse/ HR & Admin



**Head of IT**



**Head of  
Accounts  
/Finance**



**Head, Facility  
Management &  
Procurement  
Lead**



**Pastor Michael Oyewo**  
Pastor, Leadership Ministry



- Deaconry**
- **Dcn Sina Olumide**
  - **Dcn Diji Osinuga**
  - **Dcn Solape Hammond**



**Head of  
Foundation  
School**



**Head of  
Discipleship  
School**



**Head of  
Leadership School  
& Economic  
Entrepreneurship**



# FOUNDATION SCHOOL (FOLLOW THE LIGHT)

*There is only one foundation, the one already laid:  
Jesus Christ (1 Corinthians 3:11)*

## WHAT WE DO

- ***Follow the Light*** is a 12-week course open to new converts, new members of the church and already established believers/members of the church, seeking for a refreshed walk with God.
- We support GLA's vision by providing the right foundation for kingdom-living and kingdom-building to all members, which is a relationship with, and clarity on our identity in, Jesus Christ.
- We explore themes such as: cultivating intimate relationship with God; assurance of our salvation; our identity in Christ; faith & prayer; spiritual warfare etc.

## WHO WE NEED

- We are open to new members who: are born-again, spirit-filled & faithful members of GLA; have a solid knowledge of Scriptures, ability to communicate/teach, willingness to listen & learn, and a testimony of having a walk with God.





# DISCIPLESHIP SCHOOL

## WHAT WE DO

- The program guides you in building a lifelong, obedient relationship with Jesus, shaping your character to reflect His likeness. It transforms your values to align with God's Kingdom and equips you to serve His mission at home, in the Church, and throughout the world.
- The discipleship programme consists of 3 classes: ***MasterLife***, ***Experiencing God***, and ***Mind of Christ***.



# ECONOMIC EMPOWERMENT DEPARTMENT

*‘...inasmuch as you did it to one of the least  
of these My brethren, you did it to Me’  
(Matthew 25:37-40)*

## WHAT WE DO

- Support GLA members, as individuals and in their businesses, to fulfil Christ’s mission.
- Some of our programs include:
  - Health Insurance (300 individuals)
  - Business Advisory & Grants (40 businesses)
  - Adopt-a-Family (40 families targeted)
  - Career and Recruitment

## WHO WE NEED

- **Experts:** Business / Finance / Career
- **Support:** Trainers / Mentors / Counsellors
- **Admin:** Monitors, Evaluators, Officers



**Pastor Ademola Ademuson**  
Pastor, Online Missions



**Deaconry**  
○ **Dcn Anthony Adegbola**



**Social Media  
Coordinator**



**Audio-  
Visual  
Coordinator**



**Content & Media  
Coordinator**



# ONLINE CHURCH (Audio-Visual) (SOCIAL MEDIA & CONTENT MEDIA)

## WHAT WE DO

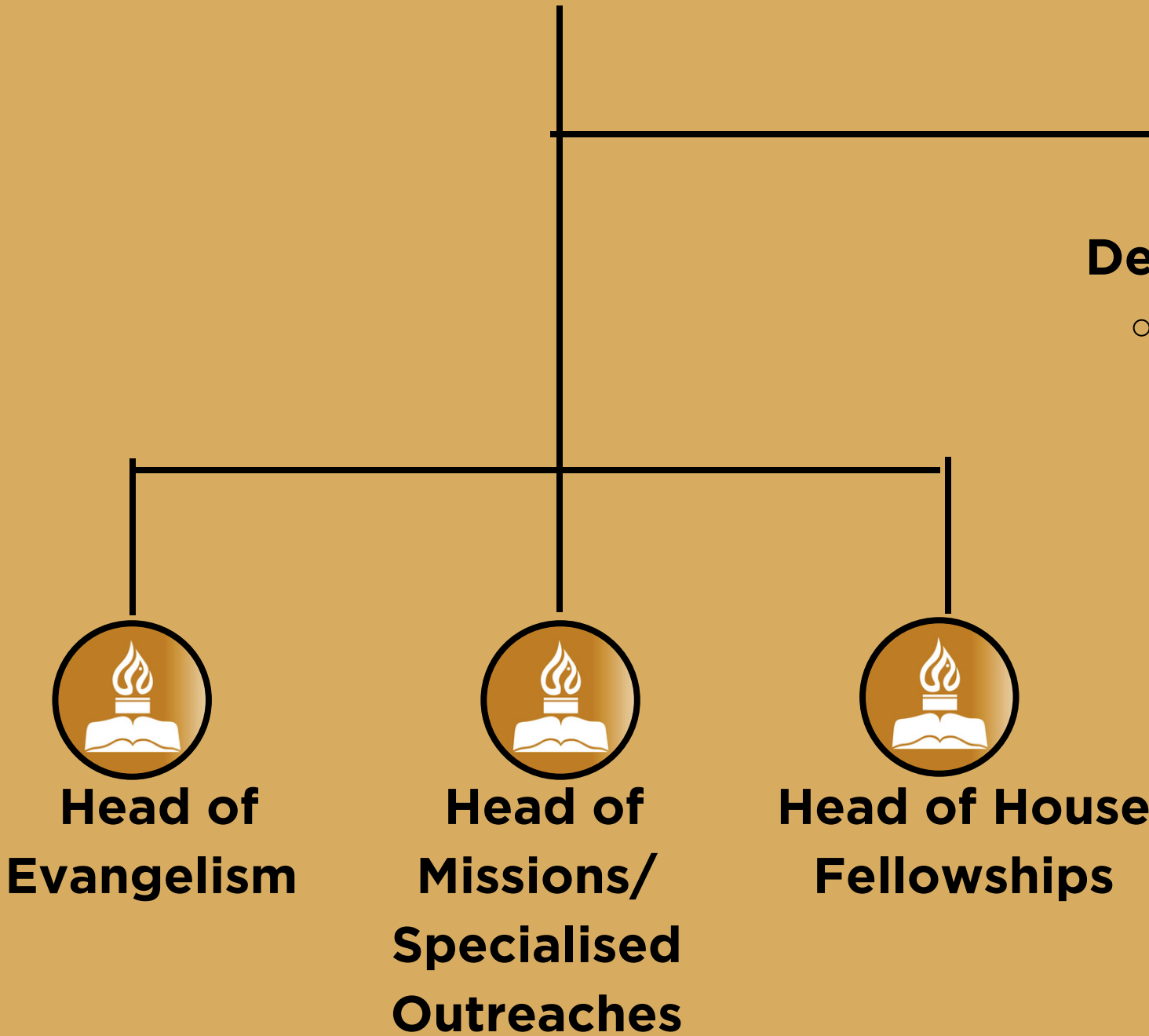
- Focused on developing and expanding GLA's online church presence.
- Manage the Church's online resources, including the GLA app, website, Instagram, Facebook, and YouTube.
- Coordinate sound, video, photography, graphics and live-streaming for GLA services and events.
- Lead online evangelism initiatives.
- Manage and maintain the Church's database.



**Pastor Afolabi Anibaba**  
Pastor, Outreach



**Deaconry**  
○ **Dcn Chuma Anosike**





# EVANGELISM DEPARTMENT

## WHAT WE DO

- Ignite and sustain a deep passion for soul winning by intentionally reaching individuals, nurturing them through sound teaching, and establishing them firmly in Christ through consistent discipleship.
- Equip and empower members: Provide comprehensive resources, training programs, and mentorship opportunities to equip and empower church members with the knowledge, skills, and confidence to share their faith in diverse settings.
- Champion collaborative outreaches: Implement creative and strategic outreach initiatives that engage the community, foster connections and impact transformation.



**Pastor Laolu Adefarasin**  
Pastor, Fellowships



**Deaconry**

- **Dcn Dele Badejo**
- **Dcn Ademola Adefarasin**
- **Dcn Dupe Adebisi**
- **Dcn Adeyinka Adefope**



**Head of Ignite Fellowship**



**Head of Men's Fellowship**



**Women's Fellowship  
(Head of Oasis Fellowship & Head of Anna's Fellowship)**



**Head of Teenage Fellowship**



# IGNITE GLA

## WHAT WE DO

- Ignite is the 'Young Adult' expression of Guiding Light Assembly focused on building a young generation of believers who take responsibility for their walk with God, growing deeper in the Word, and cultivating relationship through prayer and worship.
- We support GLA's vision by building a foundation of sound biblical teaching and cultivating relationship with God through prayer and worship. Shaping the leaders that build the nation.

## WHAT WE NEED

- We need you to join us!
- We meet every Sunday at 12pm, and every other Wednesday for DIG Bible Study
- Join us and invite your family, friends and neighbours!





# GLA MEN'S FELLOWSHIP

## WHAT WE DO

- In line with the church's creed of building leaders, the Men's Fellowship helps men take their place not just as leaders, but as priests in their homes.
- Our activities are centered around:
  - **Spiritually-fit men**
    - Prayer meetings, Bible studies, worship and prayer conferences, etc.
  - **Healthy men**
    - Quarterly fitness hangout
  - **Prosperous men**
    - Networking events, business summits, etc.



# OASIS WOMEN'S FELLOWSHIP

## WHAT WE DO

- We support Women's Life Journey to be their best selves as Single, Wives, Mothers, Business Leaders, Career-driven, at different stages of life through Prayer Meetings, Mentoring, Colloquiums, Retreats and Thanksgiving.
- We align with the GLA vision by acting as a localised "wellspring" that empowers women to carry the knowledge of God into every sphere of society.



# ANNA'S (WIDOWS) FELLOWSHIP

## WHAT WE DO

- We create a caring community where widows can find belonging, grow in their relationship with Christ, support one another, and reach out in service to others in need.
- Our activities include:
  - Christ-centered fellowship
  - Bible study
  - Sunday morning prayers
  - Monthly Saturday gathering
  - Special trainings and initiatives
  - Outreaches to other segments of society in need



# GLA TEENS' DEPARTMENT

## WHAT WE DO

- We raise young people that love God and understand their purpose in Christ. Young people that are equipped to boldly be the salt and light wherever they go.

# GLA CHURCH MINISTRY - A



**Pastor Adeolu Adefarasin**  
Resident Pastor



**Service Coordinator**



**Deaconry**  
**Dcn Dupe Oyeneyin**  
**Dcn Dupe Adebisi**  
**Dcn Ajibike Adetayo**  
**Dcn Austin Abibo**



**Voice of His Light  
Coordinator**



**Drama  
Coordinator**



**Beautification  
Coordinator**



**Ushering &  
Counting Team  
Coordinator**



# VOICE OF HIS LIGHT CHOIR

## WHAT WE DO

- We are the music arm of the church, leading God's people in Spirit-filled praise and worship during services and other church events.
- We build and develop Spirit-filled worship leaders who reflect the light and character of Christ.
- We evangelise through worship, using Spirit-led music to spread the Gospel and advance the Kingdom of God.

## WHO WE NEED

- Spiritual maturity and sensitivity to the Holy Spirit, demonstrated through a lifestyle of prayer, worship, and the Word.
- Musical competence and teachability, with the ability to sing accurately, blend well, and grow through rehearsals and correction.
- Discipline, commitment, and teamwork, shown through punctuality, consistency, humility, and submission to leadership.



# DRAMA DEPARTMENT

## WHAT WE DO

- We minister the word of God through drama.
- We inspire the church through our ministrations.
- We minister during church programmes/outreach events.
- We organise retreats to minister to and encourage church members.
- We evangelise through drama by visiting correctional homes, etc.
- We evangelise through social media.



# BEAUTIFICATION DEPARTMENT

## WHAT WE DO

- Beautification of the Church for the Celebration Service and other special events (Hosting His Presence, Spiritual Awakening, etc,).

## WHO WE NEED

- Creative mind with love for the Arts
- Teachability





# USHERING DEPARTMENT

## WHAT WE DO

- We are primarily responsible for welcoming and seating everyone and ensuring that services (and other church events) are orderly and seamless. Our tasks include:
  - Helping first-time visitors feel comfortable and directing them appropriately
  - Guiding the congregation during altar calls or special moments
  - Distributing offering and tithes envelopes
  - Providing emergency help when needed and in an orderly manner
- We also ensure that services and other church events are safe and secure.



**Pastor Adeolu Adefarasin**  
Resident Pastor



**Deaconry**  
**Dcn Dupe Adebisi**  
**Dcn Obosa Akpata**  
**Dcn Vanessa Saka**  
**Dcn Akinyemi Akinyugha**  
**Dcn Tayo Oduwole**



**Head of  
Prayer &  
Intercessory**



**Head of  
Children's  
Church**



**Head of  
Benevolence**



**Head of  
Publication &  
Publicity**



# INTERCESSORY DEPARTMENT

## WHAT WE DO

- Our primary assignment is purely intercession. We interface between God, His Church (particularly, GLA) and the world at large.
- Praying for the Church and its members and providing prayer support to the pastors and Church leadership.
- Standing in the gap, advocating, intervening and seeking God's will for various situations.



# CHILDREN'S DEPARTMENT

## WHAT WE DO

The children's department teaches God's Word in simple, engaging ways, helping children know God personally and discover who they are in Christ – raising a generation that carries His knowledge, advancing the church's vision to see God's truth cover the earth.

- Partner With God. Presenting His Word in simplicity, helping children understand and live out what it means to have a heart aligned with Him.
- Equip And Activate Children to know God personally and recognize the Godly heart attitudes He wants to develop in them—obedience, trust, humility, forgiveness, faith, and repentance.
- Receive Every Child As God Does, seeing them as unique expressions of His creation, and potential disciples being shaped to live according to His Word.

## WHO WE NEED

- **Biblical Knowledge** – Understanding of Scripture and ability to communicate it simply
- **Child Engagement** – Skill in teaching, storytelling, and keeping children interested
- **Creativity** – Ability to design fun activities, crafts, and learning aids
- **Patience & Compassion** – Nurturing attitude to guide children individually
- **Teamwork** – Collaborating effectively with other teachers and leaders
- **Spiritual Maturity** – Living a Christ-like example for children to follow



# BENEVOLENCE DEPARTMENT

## WHO WE ARE

## WHO WE NEED

- Founded in May 1994, the Benevolence Department is the vehicle through which God's love is extended **materially** to the members of the church, modelled after the example set in the early church as recounted in Acts 6:1-7.

## WHAT WE DO

- We spread the knowledge of the kingdom of God.
- We fulfill the vision of GLA by extending God's love to church members in tangible ways: food, cash, materials etc.
- We also reach out to our immediate community (Ikoyi-Obalende) and beyond, using the SOW (Strangers, Orphans and Widows) outreach model.

### TEAM MEMBERS:

- Born-again, spirit-filled, spirit-controlled & faithful members of GLA.
- Compassionate but firm
- Full of love (1 Corinthians 13)
- Sacrificial

### FINANCIAL PARTNERS:

- Donors through consistent contributions (weekly, monthly, quarterly or annually)
- Sponsors of specific projects/outreaches



# PUBLICATION & PUBLICITY DEPARTMENT

## WHAT WE DO

- Produce e-bulletins and digital publications.
- Publicise church programs and events.
- Design flyers, posters, and media materials.
- Support the church's online platforms and media presence.
- Ensure consistent church branding and communication.
- We support GLA's vision by communicating the Church's message clearly and creatively through digital publications, media, and branding, in order to support discipleship, leadership development, and to advance God's Kingdom.

## WHO WE NEED

- Writing or editing
- Graphic design (Canva or similar tools)
- Social media or media support
- Photography/video (optional);
- Creativity, teamwork, and commitment to God's work



**Pastor Adeolu Adefarasin**  
Resident Pastor



**Deaconry**  
**Dcn Bosun Ottun**  
**Dcn Deji Wright**  
**Dcn Sherry Ekong**  
**Dcn Jumoke Pedro**  
**Dcn Ajibike Adetayo**



**Head of  
Traffic &  
Security**



**Head of  
Protocol**



**Head of  
General Info  
Desk, Welcome  
& Follow-up**



**Head,  
Communion**





# TRAFFIC & SECURITY DEPARTMENT

## WHAT WE DO

- Provide a safe environment for worship.
- Ensure free traffic/vehicular movement.
- Provide support to other departments as needed.
- Enforce HSE.





# PROTOCOL DEPARTMENT

## WHAT WE DO

- We provide spiritually-enriching hospitality experience and conducive environment for visiting guest ministers (local and international), making them feel at home outside their home.
- We also provide transport and logistics support to guests and ensure that they have a warm and hospitable experience throughout their stay with GLA - from arrival to departure.
- We also act as liaison between guest ministers and Church leadership.



# GENERAL INFORMATION DEPT [GID] / WELCOME & FOLLOW-UP

## WHAT WE DO

- Welcome and receive first-timer visitors; and inform them on the church's services and events (and facilitate counselling sessions when requested).
- Log contact details of first-time visitors.
- Administer Membership/Update forms to interested members.
- Generally provide information on GLA departments, activities and events.
- We are open to new team members who: are already GLA members, are friendly and amiable, have good communication skills, and are discreet.



# COMMUNION DEPARTMENT

## WHAT WE DO

- Ensuring the communion elements are prepared and served.
- Creating a welcoming environment for members to participate in communion.
- We support GLA's vision by creating an atmosphere that enables the church to connect with God on a deeper level, reflect on the love and sacrifice of Christ – and thereby be inspired and empowered to go out and share the message of salvation.