

# DISCOVER

SOUTH TULSA BAPTIST CHURCH





# WE'RE GLAD YOU'RE HERE

## The Family of South Tulsa Baptist Church

We are glad you have chosen to find out more about South Tulsa Baptist Church. We want to provide a basic introduction to our church family. Since we have members from many different backgrounds, this class is designed to explain who we are as a church and how you can serve here.

---

### Mission Statement

At South Tulsa, our mission is "Sharing the Good News about Jesus in our community and around the world."

### Mission Verse

*"I thank my God through Jesus Christ for all of you, because your faith is being reported all over the world." ~ Romans 1:8*

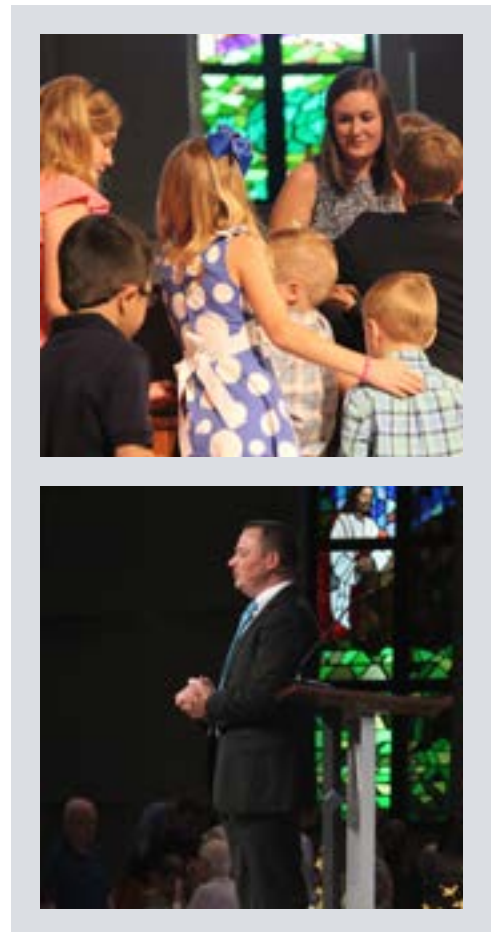
### Our Five Commitments

As the family of South Tulsa Baptist Church our ministry commitments are to:

1. **WORSHIP** – Offering Our Genuine Love and Devotion to God
2. **DISCIPLESHIP** – Growing in Christlikeness as the Family of God
3. **COMMUNITY** – Encouraging Each Other as the Body of Christ
4. **SERVICE** – Loving our Neighbors as Christ's Community of Faith
5. **SENDING** – Fulfilling Christ's Great Commission Among the Nations

### ***Our Five Commitments are fueled by healthy "R and R" – Relationships and Responsibilities***

We know the value of cultivating strong relationships and responsibilities among our church members. Through our five commitments, members are invited to build meaningful relationships with one another and to experience the joy and purpose that comes from serving, as they are given many opportunities to do both.



# WHAT WE BELIEVE

## Our Beliefs

South Tulsa Baptist Church is a cooperating church with the Southern Baptist Convention (SBC). The confession of faith, described in The Baptist Faith and Message, as revised and adopted in 2000, outlines the basic scriptural principles common among Southern Baptists. To read the 2000 Baptist Faith and Message go to [bfm.sbc.net](http://bfm.sbc.net).

## Affiliations of South Tulsa

At South Tulsa Baptist Church, we work in partnership with various organizations as we seek to carry out the Great Commission (Matthew 28:19-20).

Our affiliation with the SBC allows us to share the Good News from our local community to the far

reaches of the world. Through our financial contributions to the Cooperative Program, we partner with thousands of SBC churches in sending missionaries to countries all around the globe.

We are also affiliated with the Oklahoma Baptists state convention, World Relief, and Tulsa Metro Baptist Network. Our partnership with these organizations allows South Tulsa to cooperate in an intentional effort to join our hearts and our resources in ministry and service in our community and around the world.

## The Ordinances of the Church

We observe two ordinances of the Church — Baptism and the Lord's Supper.

## LOOKING BACK AT SOUTH TULSA BAPTIST CHURCH



**1978**

First Baptist Church South began meeting at Thoreau Junior High as a "satellite" church of First Baptist Church Tulsa.



**1979**

Moved into new building at 10310 S Sheridan Road on November 4, launching two worship services the second Sunday.



**1982**

The church became autonomous on Valentine's Day and was renamed South Tulsa Baptist Church. A two-story education building was added in the next year.



**1984**

Larry Wileman was called as pastor. "Building in Faith," ground was broken for the Fellowship Hall/ Education facility.

## BAPTISM

Christian baptism is the immersion of a believer in water in the name of the Father, the Son, and the Holy Spirit. Baptism is an act of obedience symbolizing the believer's faith in our crucified, buried, and risen Savior. Baptism also symbolizes the believer's death to sin, the burial of the old life, and the resurrection to walk in new life in Christ Jesus.

*(Matthew 28:19; Acts 2:38; Romans 6:3-5; 1 Corinthians 12:13; Matthew 3:13-17)*

## THE LORD'S SUPPER

The Lord's Supper is a symbolic act of obedience whereby believers remember and give thanks for the death of Christ, our Redeemer, and anticipate His second coming.

*(Matthew 26:26-29; 1 Corinthians 10:16-17; 11:23-34)*

## Deacons and Advisory Council

In addition to our ministers and support staff, the primary leaders and servants of our church are the



Advisory Council and the Deacons. The Advisory Council is made up of the ministerial staff along with church officers, committee chairpersons, and all active deacons.

The Deacons of South Tulsa are servants who follow the New Testament model set forth in Acts 6:1-6 and 1 Timothy 3:8-13. They minister at the direction of the pastor in carrying out God's work in the church and community by helping members and others in any way they can.



**1985**

The proposed budget totaled \$778,550, attendance jumped 37%, and the church purchased 6.6 additional acres of land.



**1991**

On Easter Sunday ground was broken for the Worship Center/Gym facility, and the 34,000 square-foot space was dedicated to God in February of '92.



**1999**

"Mission Possible" was successfully launched to retire more than \$1 million in outstanding building debt.



**2006**

Dr. Ted Kersh was called as pastor in November.

## LOOKING BACK AT SOUTH TULSA BAPTIST CHURCH *continued*



**2007**

Over \$1 million given and ground broken for "Connect to the Vision" bringing new Worship Center, Music and Office Suites into reality.



**2009**

Our new Worship Center was dedicated on November 8. "My Best for My Master" was later launched to reduce the \$5.4 million in church debt.



**2014**

In December, over \$160,000 was given to the Lottie Moon Christmas Offering for International Missions.



**2016**

Dr. Eric Costanzo was called as pastor in May.

# WHO WE ARE TOGETHER

*Members of South Tulsa Baptist Church are part of a community of faith.*

## ONE

*Together, we are committed to growing deeper in our knowledge and devotion to God and the Scriptures.*

*(Colossians 3:16; 2 Timothy 1:13; 2 Timothy 3:16-17; 2 Peter 1:20-21)*

### ***Sunday Bible Study***

We offer Sunday Bible Study groups for all ages, birth to senior adults, which meet from 9:40-10:40 a.m.

### **YOUNG ADULTS**

**College/Young Adults:** Our college/young adult ministry encourages spiritual growth through Bible study using the Explore the Bible literature, as well as other study materials.

**Families in Training (FIT):** FIT is our ministry to young families at South Tulsa. This age group has several classes which consists of newly married couples without children through families with children in upper elementary school.

### **ADULTS**

**Married Adults:** We have several classes for couples who have children in high school through college and the beginning of their careers.

**Parents of Students:** A class specifically for parents who have students in grades seven through twelve, this class is a wonderful way for parents to be connected with the student ministry and all that our student ministry offers.

**Singles:** This class allows singles in the Tulsa area to gather together and study the Bible through the Gospel Project material.



## 2018

We celebrated being debt free and positioned to achieve even more for the Kingdom of God on July 8, following a 15-month campaign, "A New Day at South Tulsa."



## 2020

South Tulsa ranked 1st in the Tulsa Metro area and 4th among Oklahoma churches in Cooperative Program giving.



## 2022

On February 14 we celebrated 40 years of ministry as South Tulsa Baptist Church and by God's grace there will be many more to come!



## 2025

On January 5, we held the Grand Opening of our new indoor playground and Sunshine adaptive classroom, concluding the "Let Your Light Shine" campaign.

**Empty Nesters:** Empty Nesters offers three classes to adults with children who have left the "nest."

**Men:** If you are wanting to be in a men-only class this is a great option. This class uses the Explore the Bible material in order to go verse by verse through Scripture.

**Women:** We have two all-ladies classes. Our Ruth's Open Door class and our L.A.C.E. (Ladies After Christ's Example) class. Both groups enjoy a time of lecture and discussion while teaching verse by verse using the Explore the Bible literature as a guide.

**Discover the Story/International Class:** This class is an introduction to the story of the Bible through a narrative and discussion style of teaching. The class is geared towards our international, refugee, and those for whom English is not their first language; but it is open to anyone who would like to begin learning about the Scriptures.

**Early Class:** This class meets 9:00-10:00 a.m. and is designed for Music Ministry participants, giving them time to prepare for the worship service. However, all are welcome to attend.

## SENIOR ADULTS

The Senior Adults have four Sunday Bible study groups. They also participate in our Bridge Builders monthly luncheons and weekly Game Day.

## TWO

*Together, we experience worship, fellowship, and service for the good of God's Kingdom.*

*(John 4:23-24; Acts 2:42-47; 1 Thessalonians 5:17; Hebrews 10:24-25)*

### **Sunday Evening Discipleship**

We participate in a variety of discipleship and spiritual growth opportunities on Sunday evenings, for all ages, including large group and small group classes.

### **Wednesday Evening Study and Prayer**

Wednesday activities begin at 4:45 p.m. with our church family's fellowship meal, which is followed by a time of Bible study and prayer for all ages.

## **Music Ministry**

Our early service is led by our praise team with guitars, keyboard, and drums offering modern worship songs and newly arranged hymns. Our late service is led by choir and orchestra, offering a blend of hymns, modern worship songs, and all styles of music. Church music offers a wonderful opportunity for persons of all ages to serve the Lord.

**Sanctuary Choir:** The Sanctuary Choir leads in worship each Sunday at 10:50 a.m. This group is open to older youth and adult singers with no audition required. The choir presents seasonal programs which include Christmas and Easter.

**Student Choir:** The Student Choir is designated for students in grades seven through twelve. The choir sings periodically for worship services and at Christmas. They take an annual spring tour where they sing at various venues and serve through ministry projects.

**Children's Choir:** A comprehensive graded choir program, this area of the music ministry focuses on children from age three to sixth grade, with a

total of nine choirs. These choirs work on Scripture memory songs and hymns as well as performances for the Christmas and spring programs.

**Men's and Ladies Ensembles:** These separate ensemble groups are made up of faithful Sanctuary Choir members. These groups sing for worship services, at special events, and occasionally perform outside the church.

**Orchestra:** The South Tulsa Orchestra plays in the 10:50 a.m. worship service and accompanies the Sanctuary Choir for the seasonal programs.

**Praise Band/Praise Team:** The Praise Band and Praise Team lead worship for the 8:30 a.m. service. This group is made up of guitar, keyboard, bass, percussion players and vocalists.

**Handbell Choirs and Children's Choir Chimes:** Our Adult, Student, and Children's Handbell choirs and our Children's Choir Chimes perform throughout the year during worship services and for seasonal programs.





# THREE

*Together, we encourage and hold each other accountable to be faithful and grow in all areas essential to the Christian life.*

*(Hebrews 10:24-25; Ephesians 4:13; Philippians 2:4,5,7; Colossians 1:28)*

## **Family Ministry**

Sharing the Good News about Jesus is a vital part of what we do here at South Tulsa. We have a desire to equip our families as they encounter God together which will help them to engage the Nations with the Gospel. Our goal is to develop ministries that will help our families in each of these areas. We are glad to have the opportunity to partner with young and old as we strive to take the Good News of Jesus into our communities and around the world.

## **Men's Ministry**

At South Tulsa the importance of our Men's Ministry relies on discipleship and accountability. Our men like to build relationships with each other through men's events and find times throughout the week to meet together and keep each other accountable. Our theme verses, Hebrews 10:24-25 reflect our desire to see this discipleship and accountability in action.

## **Women's Ministry**

We believe the role of women in the body of Christ is vital. At every juncture women are leading, teaching, mentoring, sharing, lifting, guiding, supporting, cradling... some in structured roles, many in unstructured, unseen roles. Our goal is to connect women with other Christian women in and outside of the church family.

We hope to do this by meeting the different needs of women through fellowship, encouragement, mentoring, Bible study, supporting and enriching a woman's personal spiritual growth.

## **College and Young Adult Ministry**

The College and Young Adult Ministry at South Tulsa desires to help you grow in your relationship with Jesus Christ. We worship together, serve together, and grow as disciples who make disciples. Each week, we gather for Bible study, fellowship, and worship. Throughout the year, we participate in service opportunities and short-term mission trips. Whether you're in college or early in your career, you are welcome to join our community as we follow Jesus together. In addition to Sunday Bible study, we meet on Wednesday nights for worship, Bible study, and small group discussion. Our group also gathers regularly for fellowship beyond the church walls.

## **Senior Adult Ministry – Bridge Builders**

Bridge Builders is a group for adults who are mature in age. Being Bridge Builders is about building bridges to hurting people. It is about helping others experience a personal relationship with Jesus Christ, and bringing peace and healing to hurting Christians. Our Bridge Builders are encouraged through Bible study, fellowships, meaningful relationships and enjoyable activities. A weekly game day on Thursdays and a monthly luncheon (first Tuesday) are among our activities. You are invited to come to South Tulsa to be comforted and to become a BRIDGE BUILDER!

## **Student Ministry**

It is our goal to help students from seventh grade through senior year to encounter God in their personal lives through weekly Bible Study on Sunday mornings, Sunday evening discipleship studies, and Wednesday night student worship with relevant topics to equip them

in their personal journey with Christ. Our students also participate in a variety of activities throughout the year including Falls Creek Student Camp, international and local mission opportunities, parties and much more. Parents of students can study the same Bible study material as their students during the Sunday Bible study hour.

### ***Children's Ministry***

Kids represent the greatest opportunity for long-term Kingdom impact. Kids who know the Lord at an early age discover God's purpose for their lives and have hope for the future. South Tulsa Kids is committed to helping guide 1st-6th graders to knowledge of Scripture and a personal relationship with Jesus. We desire to partner with parents in the discipleship of their kids and provide weekly opportunities for them to encounter the Lord. Children also have lots of fun activities and events throughout the year including Summer Music Activity for Kids (SMAK), Vacation Bible School, Kids Camp, and more.

### ***Special Needs Ministry & Indoor Playground***

The Sonshine Room adaptive classroom, along with the new Indoor Playground, facilitates our Special Needs Ministry. All children are important to us, and our objective is to provide children, birth through fourth grade, with a loving and safe environment that allows parents time to worship and study God's Word. We strive to provide Christian education and care utilizing trained leaders, clean and safe surroundings, and a well-balanced curriculum. Our Indoor Playground is a fun place to play throughout all seasons (rain or shine) and is used daily.

### ***Preschool Ministry & Extended Teaching Care***

At South Tulsa we desire to provide preschoolers with a loving and safe environment in which spiritual foundations will be laid to guide each child to a personal relationship with Christ. Preschool classes take place on Sundays with age-appropriate Bible teaching activities, and Extended Teaching Care is available during both



services for babies through three-year-olds. Preschool events are also offered including PreSMAK, a summer music camp, and Vacation Bible School.

### ***The Early Learning Program (ELP)***

Established in 1983, ELP is vital outreach ministry to our community. Our developmentally based preschool serves children 12 months through Kindergarten. Each class has two teachers. Students in ELP have the opportunity for social, emotional and academic development within a strong Christian environment. Specialty classes of Bible Story, Music, Motor Room, and Chapel provide additional foundational Biblical training.

# & UNCHURCHED PEOPLE STRATEGY



## FOUR

*Together, we are led by the Holy Spirit in sharing the Good News about Jesus in our community and around the world.*

*(Matthew 28:19-20; Romans 12:4-10; 1 Corinthians 12:4-5; 2 Corinthians 5:18-20; Ephesians 4:11-12; 1 Thessalonians 5:17; 1 John 4:7-11)*

### **Missions**

We have several local, domestic, and international mission trips, partnerships, and giving opportunities as a part of the ministries of our church here at South Tulsa.

**Short-term Mission Trips:** Each year many of our members travel to other areas of the world to minister. International missions is at the heart of our church family. We believe that every church member should either go, give, or pray, enabling the gospel to be taken around the world.

**Partnerships:** 1.) Every partnership is, first, a prayer partnership. Not every partnership will be financial, and not every partnership will involve mission teams. Not all of our partners can actually receive funds and/or teams. In all cases, however, we are committed to praying continually for them as they also pray for us.

2.) As followers of Christ, we are ALL called to both give and go. While not all of us are called to give in large amounts or travel great distances, we are called to make disciples and be generous as God provides the opportunity. We may go across the world, or simply across the street.

3.) Some partnerships are best supported by giving, rather than going. In some cases, our resources are better used by supporting the work on the ground directly as opposed to spending on airfare and lodging. In other places, our presence on the ground could create unnecessary problems for our partners or even put them in danger. In such cases, we give generously and trust God in faith to use our resources to reach the places we do not go.

4.) Some partnerships give us the opportunity to participate personally by giving and going. South Tulsa members will have opportunities to give and work personally with missions partners in North and Central America, the Middle East, Central Asia, and East Asia, and perhaps even other places we do not yet know. Even now, you can begin praying about the many different ways you can get involved. What a privilege to be part of God's Kingdom work around the world!

**Cooperative Program:** Our missions committee leads the church to set a percentage of our total budget gifts to be given to the SBC Cooperative Program to support Southern Baptist missions around the world.



### ***International and Refugee Ministry***

We have several opportunities to minister to international and refugee families who have been placed right outside our doors here in South Tulsa. Through our partnership with Jenks Public Schools, our English as Second Language (ESL) classes at South Tulsa, our Discover the Story class, the RiSE sewing ministry, and in many other ways we are connected to these families on a weekly basis.

### ***Retirement Home Ministry***

South Tulsa has a passion for sharing the Gospel with residents of retirement homes in our community. There is transportation available to residents who would like to attend our worship services and Bible studies. South Tulsa also has an online service ministry. This ministry allows residents who are not mobile to view our online service at their retirement home. The online service ministry has expanded to more than a dozen retirement homes in our community.

### ***The Ministry Center***

South Tulsa takes the lead in joining other members of Tulsa area churches in serving at the Ministry Center located in northwest Tulsa. Each client of the Ministry Center is interviewed, and their spiritual needs are addressed in addition to their physical needs of food and clothing. The Good News about Jesus is shared with thousands each year by hundreds of volunteers from South Tulsa and other area churches. For more information go to [ministry-center.org](http://ministry-center.org).

## Jenks CarePoint

Jenks CarePoint partners with local churches, businesses and Jenks Public Schools to provide clothing and household items to a largely international population in and around South Tulsa. We connect families to other resources as needs are identified. Each client has the opportunity to hear the gospel message and to have their needs prayed over. Learn more about Jenks CarePoint at [jenksarepoint.org](http://jenksarepoint.org).

## Other Areas to Serve

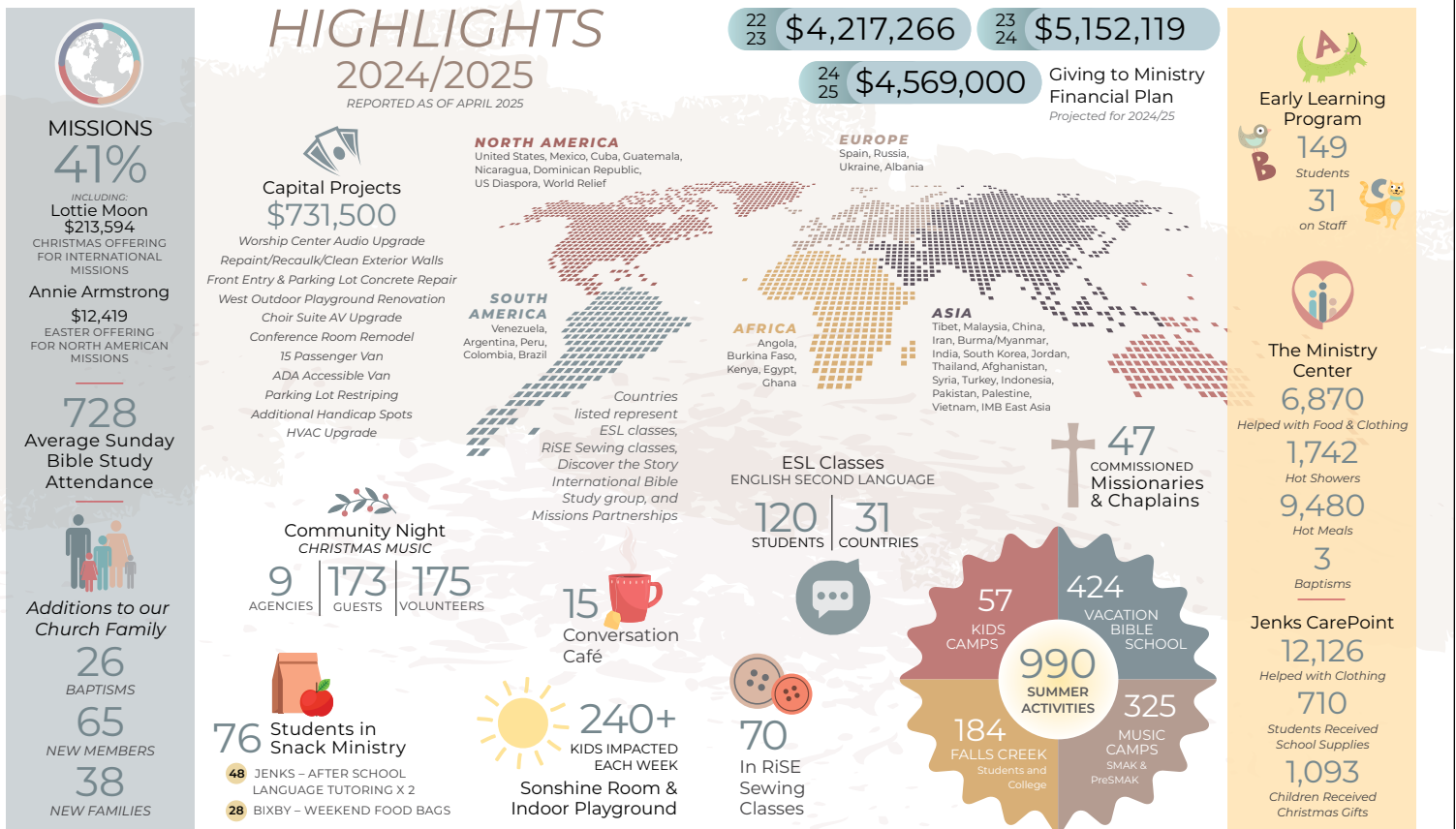
- Committees and Leadership Teams
- Welcoming Team
- Sonshine Special Needs/Adaptive Classroom
- Stephen Ministry
- GriefShare
- Adoption Ministry

- Children's Missions Classes (Girls in Action, Royal Ambassadors, Mission Friends)
- Care101 Chaplain Ministry
- Arts & Crafts Expo
- Partnership Ministries – Jail Ministry, Hope Pregnancy Center

## FIVE

Together, we provide financial support for the church and its mission endeavors through faithful and cheerful giving.

(1 Corinthians 4:2; 1 Corinthians 16:2; 1 Peter 4:10)



# BECOMING A MEMBER of South Tulsa

At South Tulsa Baptist Church, we offer membership to anyone who has confessed Jesus Christ as their Savior and Lord, and affirms their belief that God raised Jesus from the dead (Romans 10:9-10). We also believe that a person's profession of faith should be followed by baptism by immersion, just as the Bible teaches. Membership at South Tulsa Baptist Church can happen through several different means.

We invite you to begin the membership process at South Tulsa Baptist Church in one of four ways:

## **Profession of Faith and Baptism**

A person may join our church by making a profession of faith in Jesus Christ followed by baptism. If you have never prayed to receive Jesus Christ as the Lord and King of your life, one of our ministers would love to talk more with you about this.

## **Letter**

If you currently have membership in another Baptist church, you may join our church by a transfer of your membership letter. Simply tell us that you are coming by letter and we will take care of the details of transferring your membership to our fellowship.



## **Baptism**

If you have previously prayed to receive Jesus Christ but have not been baptized as a believer, you may join our church through baptism.

## **Statement**

If you were not previously a member of a Baptist church, you may join by statement if you have received Jesus Christ as your personal Savior and have been baptized as a believer.

## ***How do I take the first step to become a member at South Tulsa?***

- In any of our worship services.
- During our “extended time of response” following any worship service.
- Schedule a meeting with a member of the ministry staff.
- Join at the end of the Discover South Tulsa class.

# OUR MINISTRY STAFF

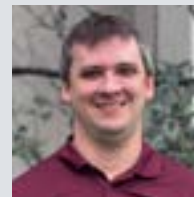
At South Tulsa our staff is committed to providing the necessary tools for the spiritual growth and maturity of each and every one of the church's members, so that they can be used by God to advance His Kingdom and bring Him glory. It is also every staff member's desire to minister to you and your family personally. If we can help you, please do not hesitate to contact any one of us. You can learn more about our staff by visiting our website at [southtulsa.org/leadership](http://southtulsa.org/leadership).



**Eric Costanzo**  
*Pastor*  
eric@  
southtulsa.org



**Zack Hudson**  
*Associate Pastor &  
Minister to Families*  
zack@  
southtulsa.org



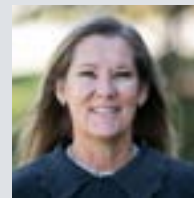
**Sean McKinney**  
*Music Ministry  
Associate*  
sean@  
southtulsa.org



**Phil Dark**  
*Minister to  
Senior Adults &  
Pastoral Care*  
phil@  
southtulsa.org



**Jesse Johnston**  
*Pastoral Care &  
Chaplaincy*  
jesse@  
southtulsa.org



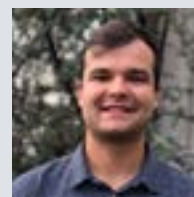
**Karen Pirtle**  
*Minister of  
Missions and  
Mobilization*  
karen@  
southtulsa.org



**Julie DeYoung**  
*Minister to Families  
with Preschoolers*  
julie@  
southtulsa.org



**Rebecca  
Johnston**  
*Minister to Families  
with Children*  
rebecca@  
southtulsa.org



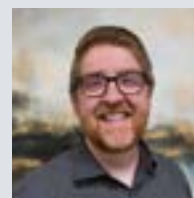
**Seth Spoo**  
*Pastoral & Student  
Associate*  
seth@  
southtulsa.org



**Lisa Fuller**  
*Director - The  
Ministry Center*  
lisa@ministry-  
center.org



**Kara Lee**  
*Director -  
Jenks CarePoint*  
kara@jenks  
carepoint.org



**Michael Ware**  
*Minister of Music*  
mware@  
southtulsa.org



**Kimberly Hayes**  
*Director - Creative  
Ministries*  
kim@  
southtulsa.org



**Laura McFarlin**  
*Associate Minister to  
College Students &  
Young Adults*  
lauram@  
southtulsa.org



**Phillip White**  
*Minister of  
Administration*  
pwhite@  
southtulsa.org



**SOUTHTULSA**  
BAPTIST CHURCH

10310 S SHERIDAN ROAD, TULSA, OKLAHOMA 74133 | 918.299.0904 | SOUTHTULSA.ORG

WORSHIP with us on SUNDAYS at 8:30 & 10:50 a.m. IN-PERSON or ONLINE at [southtulsa.live](https://southtulsa.live) or  
on Facebook live at [facebook.com/Southtulsabaptist/](https://facebook.com/Southtulsabaptist/)