



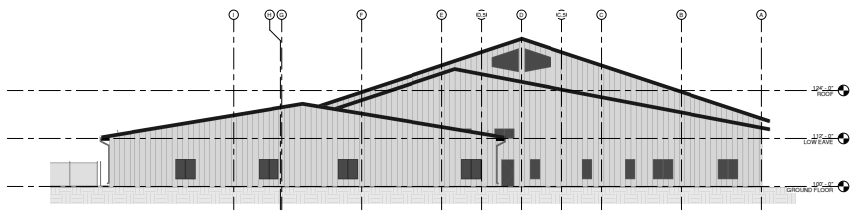
1 EAST ELEVATION
3/32" = 1'-0"

REF: A100 / 1



2 WEST ELEVATION
3/32" = 1'-0"

REF: A100 / 1



3 SOUTH ELEVATION
3/32" = 1'-0"

REF: A100 / 1

GENERAL NOTES



ARCHITECT
Stark Design, P.C.
2000 Oak Street, Suite 200
Cheyenne, WY 82001
Phone: (307) 234-1144
CONTACT PERSON(S):
John Stark, AIA
Principal Architect

CIVIL ENGINEER
Hans Miller Engineering
200 Parkway Blvd
Cheyenne, WY 82001
Phone: (307) 234-1144
CONTACT PERSON(S):
Hans Miller, P.E.

STRUCTURAL ENGINEER
Mortenson Wyoming
2000 Yellowstone Hwy Suite 200
Cheyenne, WY 82001
Phone: (307) 234-1144
CONTACT PERSON(S):
John Stark, P.E.

MECHANICAL ENGINEER
MEP
Phone: (307) 234-1144
CONTACT PERSON(S):
Nicholas Pickering, P.E.

ELECTRICAL ENGINEER
MEP
Phone: (307) 234-1144
CONTACT PERSON(S):
Rob Shultz, P.E.

MATERIAL LEGEND



This document and the ideas and designs contained herein, are the property of Stark Design, P.C. Stark Design, P.C. and the author of this document warrant and represent that they are the author of this document and warrant that they are the author of this document and warrant that they are the author of this document.

KEYNOTES

CALVARY CHAPEL

2000 Ridge Rd
Cheyenne, WY

OWNER:
SR Construction
2000 Ridge Rd
Cheyenne, Wyoming

CONTRACTOR:
Rogers Pacific
(307) 636-7500

COMPLETED BY: 20-01
PLOTTED ON: 6/20/20 6:34:52 AM
SCALE:

PROJECT NO.	20-01
DATE OF CONSTRUCTION	6/20/20
DATE OF CONSTRUCTION	6/20/20
DATE OF CONSTRUCTION	6/20/20
DATE OF CONSTRUCTION	6/20/20

EXTERIOR ELEVATIONS

A201