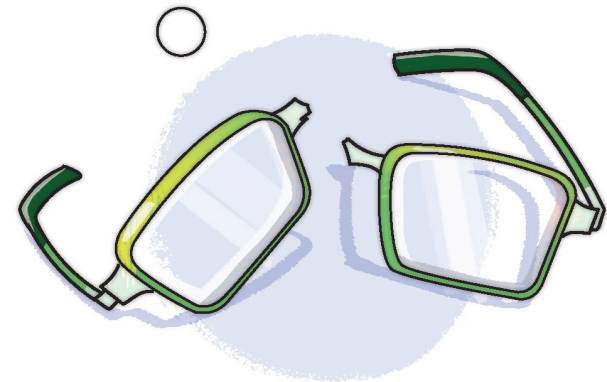
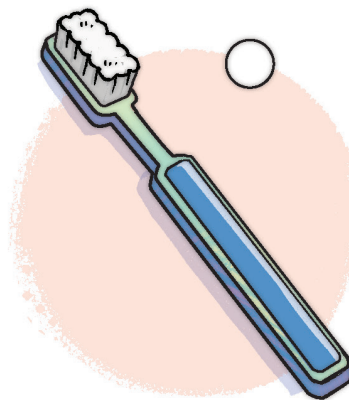
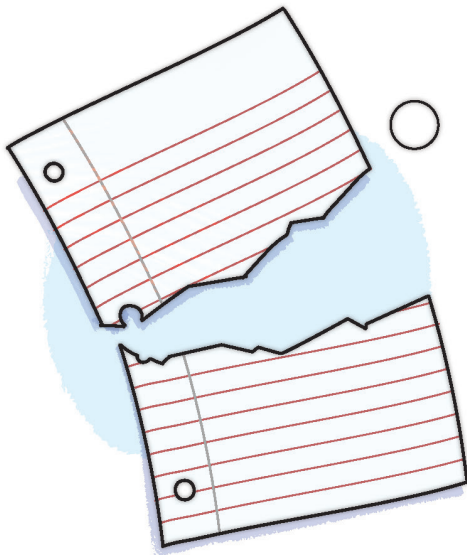
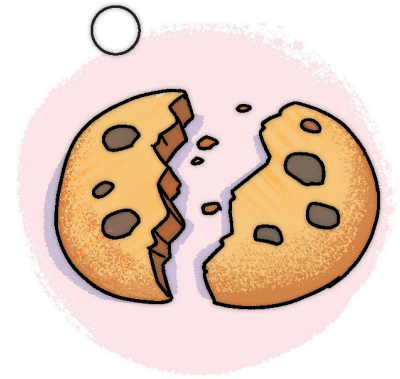
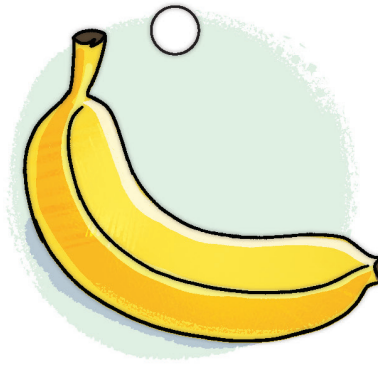
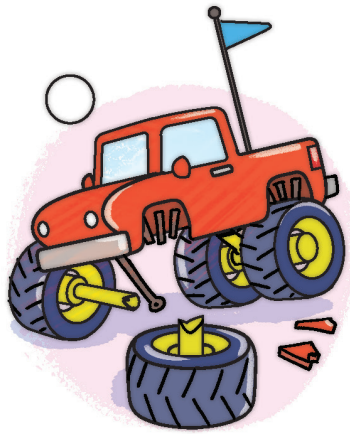
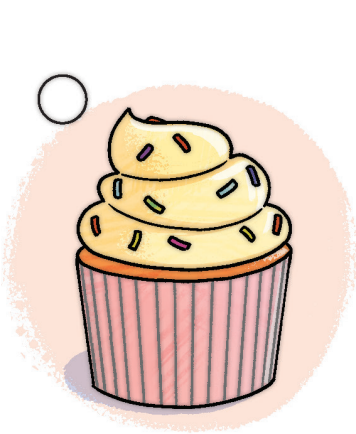


Together or Apart?

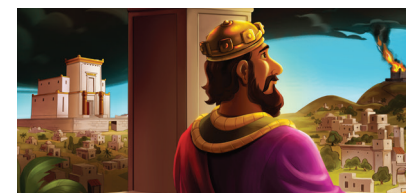
INSTRUCTIONS: Rehoboam's sin divided the kingdom. Color in the circle beside the items that are separated into two parts.



NAME:



theGOSPELPROJECT.



The Kingdom Divided

1 Kings 11–13

STORY POINT:

Rehoboam's sin divided the kingdom.

CHRIST CONNECTION:

Rehoboam made a wrong choice, and God's people split into two groups. But Jesus, our good King, brings together all who trust in Him and welcomes them into His kingdom forever.

KEY PASSAGE:

1 Kings 8:60

BIG PICTURE QUESTION:

How many gods are there? There is one true God.

Scan the QR code
for resources to
use at home!



Older Preschool Activity Pages
Unit 13 • Session 1