

CHURCH PLANTING +
LEADERSHIP EQUIPPING IN

Victoria

Joining Jesus in Victoria + beyond.

Partnering to start new churches and establish an inter-denominational hub of disciple-making, church planting, and prayer.



PARTNERING WITH

Brett & Natalie

Brett is a Regent College graduate and an ordained minister with the PAOC with over 20 years of pastoral experience. He is an occasional coach and professor and ever since accidentally becoming a youth pastor at 18, he has been focusing on what it means to “make disciples.” He has a heart for the local church in all its expressions and for Canada. He and Natalie led a team that planted CityLights church in Burnaby B.C in 2013. Natalie is partnering with Brett in church planting and is also currently doing her Masters in Counselling, teaching piano, and helping raise their two kids.

Here is an overview

We aim to:

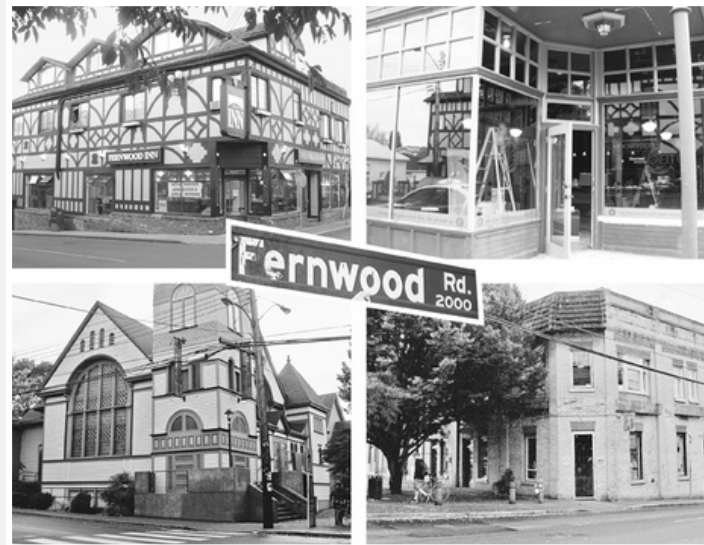
Pray and join Jesus in his mission as we show and share Jesus. **Make disciples.** Help Christians grow as missionary disciples and start “Jesus communities.” **Train leaders.** Establish a new church with centralized gatherings. **Plant a church(es).** Partner with other churches to see increased disciple-multiplication, church planting, and revival prayer in the region. Participate in gospel saturation. **Church Collaboration.** Encourage and equip pastors and churches regionally and beyond.

We want to see people come to know Jesus. May Jesus be glorified.

We invite you to prayerfully considering partnering and join the story Jesus is writing.

Highlights:

- **We are seeking prayer support and financial partnership.** We can't do this alone and invite you and your church to consider joining Jesus with us.
- We are starting up headquarters in Fernwood, a very liberal neighbourhood where numerous churches have closed down.
- **We are teaming up** with Chris and Kellee Synasael. Partnership in pioneering is healthy, biblical, and effective.
- Pray with us towards **establishing a regional, interdenominational hub of disciple-making, church planting, and prayer** in Greater Victoria that serves the island and beyond.



Why is this move worth it?

Jesus loves everyone, everywhere. He said “this is eternal life: that they know you, the only true God, and Jesus Christ, whom you have sent” (John 17:3). **Jesus is the way for people to be reconciled to God,** experience hope, and receive eternal life. We are being sent to join Jesus in his mission and to help others do the same. We invite you to be a part of this. **We believe this is worth our efforts and sacrifice.**

In discerning this opportunity, the words of Brielle, our 10 year old daughter rang true. As we left a visit to Victoria, Brielle spoke up that she believed we should move. “In some other cities there are more christians and churches, but it seems that in Victoria and this neighbourhood there aren't very many. If Jesus invites us to shine as lights, then it makes sense that we would go to where it is dark.” **Truth spoken by a child.**

As Christianity declines, we recognize that Canada is a mission field. B.C is the nation's least religious province with many cities needing Jesus. Victoria is one of the top 3 least religious cities in Canada and is also known as the witch capital of Canada. Jesus loves the people of Victoria! **They are worth it.**

Our efforts will start in the historic Fernwood neighbourhood and the adjacent areas in the core of the city. One local pastor commented that many of the people who live in Fernwood and the surrounding area are very far from God and far from “going to church.” Various church buildings in the neighbourhood are no longer active churches. **The need is clear!**

We believe Jesus is calling us to be local missionary church planters and also extra-local equippers to serve the Church of Canada. **Following Jesus in faith is worth it.**

Why “Missionary Church Planting”?

It is a mission field. The people of Fernwood and the surrounding neighbourhoods are rich with culture, generally open to spirituality (but not religion), anti-institutional, activist, and liberal. Many aren’t looking for “a good church to go to.” Similar to going to Tokyo or Bucharest, **it is fitting to have a missionary posture** and follow the leading of the Holy Spirit.

We start with “being” the church. We want to participate in seeing a city saturated by the power and light of Jesus through his people. We pray for Jesus to move, new disciples to be made, and new churches to form. We are planting the gospel and we are purposefully starting a new church(es). **We are church planters.**

This is pioneering, long-term work. It’s tilling hard soil and planting seeds in new ground. **But a seed is the start of a tree. A tree is the start of an orchard.**

We are building upon what Jesus has been doing with his church in greater Victoria and look forward to kingdom partnership in the region. Please partner with us and **pray with us for an orchard of fruitfulness.**

Pray that people come to know Jesus.

PROPOSED TIMELINE

1

Relocate + Rejuvenate.

Move, settle, and setup the kids. CityLights has planned on some sabbatical time amidst transition. Summer 2025

2

Missionary Foundations:

Scouting + learning the city, growing prayer + financial supporters, and core team building. Fall 2025 - Winter 2026

3

Launch additional home groups + ministry initiatives.

Summer - Fall 2026

4

Join Jesus, follow the leading of his Spirit, and start public services

Long term we pray towards:

- A growing prayer movement and a move of God.
- Disciples being made and new disciple-making communities forming.
- An interdenominational hub for disciple-making and church planting to develop in Greater Victoria.

Partner with us.

Besides relocating to Victoria, or hosting a partnership info session, there are several ways to partner with us.

PRAYER: Our goal is to have 250+ prayer partners.

Sign-up at www.clvan.ca/sendtheDonalds. You are invited to receive regular, brief, meaningful updates.

FINANCIALLY: We are praying for approximately 75+ financial partners.

Monthly Partners - We are fundraising for ministry expenses, salary, and employer costs (EI, CPP, medical, etc.). We invite you to ask God if he wants you to partner with Him through this missionary effort. We are praying for monthly commitments of the following if you would pray about partnering for 2 years and then evaluating:

- 2 commitments of \$1,000.
- 8 commitments of \$500.
- 20 commitments of \$250-350.
- numerous commitments of \$50-100.

Startup Costs (one-time): \$85,000. (i.e rental space, equipment, website)

1 gift of \$25,000 = \$25,000 | 2 gifts of \$15,000 = \$30,000

5 gifts of \$5,000 = \$25,000 | 5 gifts of \$1,000 = \$5,000

Financial and strategic oversight is provided by an experienced Leadership Task Force.



Want more details?

Bonus info below

F.A.Q

HOW DID YOU CHOOSE VICTORIA?

There was a formal season of discernment with CityLights since August 2024. We knew God was calling us to something new and knew it involved local and extra-local ministry. Victoria came about through prayer with Chris and Kellee about partnering. We believe this is Jesus' invitation.

WHAT IS THE PLAN FOR FINANCIAL SUPPORT?

We are fundraising. Similar to a global missionary worker, it is a step of faith and involves individuals, businesses, and churches choosing to prayerfully partner in making Jesus known. CityLights Church is donating seed funds to help provide an on-ramp amidst relocation.

For long-term sustainability, Brett looks to grow co-vocational income through equipping/coaching work with churches/denominations. Natalie will graduate and begin to work as a counsellor in 2028. Both will explore additional creative financial opportunities. Eventually as a church(es) emerges, there will be some level of a paid pastoral role but this isn't necessarily a 3-4 year run towards a self-sustaining church. We are pioneering new ground and helping start kingdom expressions. Similar to overseas missionaries, **we are praying for God to call some longer term partners.**

WHO ARE CHRIS AND KELLEE?

They are church planting friends from the C2C church planting network and Soma churches. They are planting with the Send network (CNBC) and we are excited to partner and lead together believing our gifts are complementary. We are excited to encourage unified collaboration.

WHO IS THIS PLANT "WITH"?

This church plant and God willing the future church plants, is starting in collaboration with CityLights Church sending Brett (PAOC), West Village Church (fellowship Baptist) who are sending Chris (Send network - CNBC). We are also connected with Soma Churches. There is good relational support & accountability. Financial support is an ongoing prayer request.

HOW ARE THE KIDS DOING?

We have been discerning as a family and are united in this direction. We all have emotions around it but the kids are currently optimistic. They have been in one school and church their whole life so this is significant.

HOW IS HOUSING IN VICTORIA?

In the core of the city, it is extremely difficult and expensive to find housing. In the core of the city a basic house costs \$4500-5000 to rent.

WHAT DOES SERVING THE CHURCH OF CANADA LOOK LIKE?

We want to help turn the thermostat of missionary disciple-making up in Canada. We desire for churches to be equipped to join Jesus in his mission in everyday life. Brett is already serving a handful of pastors and is becoming a consultant to serve with Saturate. We are open to serving with denominations/networks and have various ideas and hopes for the future.

HOW CAN A CHURCH "PARTNER"?

We want to develop real relationship that can be mutually beneficial. Formal partnership can include:

- Inviting us to speak and hosting an info session for those interested in partnering.
- Supporting us financially as a missions partner with monthly or annual donations.

WHEN WILL YOU LAUNCH A CHURCH SERVICE?

At first, our homes will be our headquarters and Gatherings will occur in our homes until finding a centralized space is fitting. We are starting *Jesus Communities* throughout the city with centralized Equipping and



CONNECT WITH US

brett@citylightschurch.ca

@brettgd

www.clvan.ca/sendtheDonalds

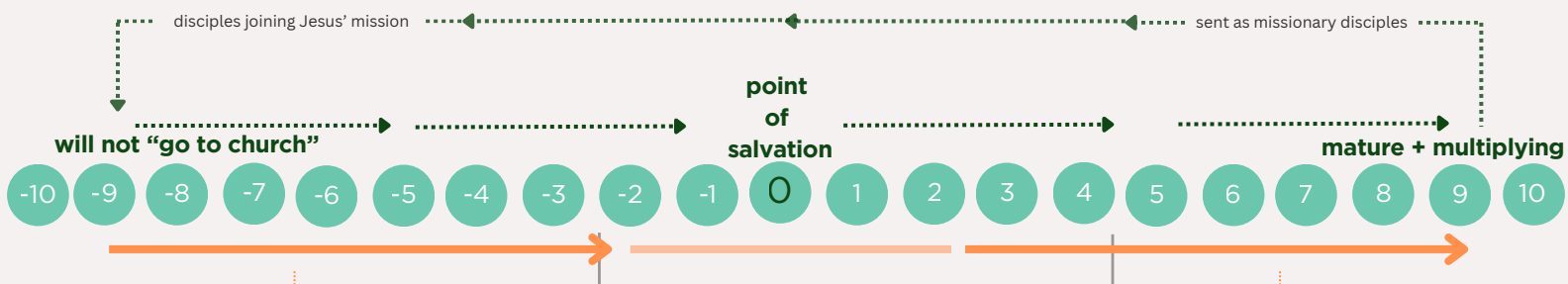
**Donate, join the prayer team,
and sign-up for updates.**

What is your plan to start?

We are posturing ourselves as missionaries to engage those who wouldn't yet go to a church service and as equippers of those who are maturing as missionary disciples.

TO HELP ILLUSTRATE, SEE THIS SPECTRUM OF OPENNESS, BELIEF, AND SPIRITUAL MATURITY.

Jesus commissioned his apprentices to make disciples who make disciples. Just as parents have children, mature disciples participate in multiplying disciples.



WE WANT TO FIRSTLY FOCUS HERE:

Forming missionary communities that engage intentionally in the everyday life rhythms of the city seeking to join Jesus in his mission. "Being" the church to, and among, those who won't yet "go to church" but can be invited one step closer to Jesus or are ready to explore him in community.

WE WANT TO FIRSTLY FOCUS HERE:

Starting equipping groups and Equipping Gatherings for those who are hungry to mature as missionary disciple-makers and start missionary communities. Encourage other pastors and churches.

Many churches actively serve this sphere.

It can often be challenging to see people come to faith (0), mature, and multiply as missionary disciple-makers (+6 to +10). Some churches and church plants see salvations (praise God!) and are reaching the de-churched, or those with faith backgrounds (-2 to +1). The Canadian Church has lots of opportunity to grow a missionary posture and engage with those down the scale.

Canadian culture has been shifting down the scale - more secular, less interested in "religion." The Church has lots of opportunity to grow in developing an intentional, Spirit-led, missionary posture to reach and disciple those down the scale. We also see the growing spiritual curiosity amongst the younger generation.

In order to reach out further down the scale, the Church will need deep roots, mature disciple-makers, and creativity. Saturating Canada with the good news of Jesus will involve equipping apprentices of Jesus to mature as missionary disciples in their everyday lives.

"THE FULLNESS OF [JESUS] WHO FILLS ALL IN ALL." - EPHESIANS 1:23

We want to join Jesus in his mission of filling ALL in ALL - the whole spectrum. We want every person to encounter Jesus through the words and deeds of his people. This will involve all types of people (and churches), loving and serving all types of people.

Recommendations from others

"Having known both Brett & Natalie as well as Chris Synaesaal, and their leadership for more than a decade, I was beyond thrilled to hear that they were feeling called by Jesus to join forces. Both Brett and Chris are among the strongest church planting leaders in Canada, particularly in the areas of genuine discipleship and missional living in and through community. Both Brett and Chris are inspiring followers of Jesus and are transformational leaders with real results in effective multiplication."

- Mike Bidell, Lead Pastor, Comox Pentecostal Church

Brett is one of the highest quality pastors and missionaries I know. He has thought deeply and imaginatively about how to bring biblical discipleship to life while keeping his ideas grounded in the local church. I have admiration for Brett as a thinker but even more as a follower of Jesus; someone who lays his life on the line to practice what he preaches. Brett is high on my list of people I love to learn from.

-Matthew Menzel, Lead Pastor, Centre Church Vancouver

"Brett is the only student I taught at Summit Pacific College whom I invited back to teach my Urban Mission and Church Planting class every year. With integrity and passion he and Natalie have grown as missional leaders, making disciples that make disciples, and effectively training others to do the same. I recommend them to you."

*-Fred Fulford, former lead pastor at Portico, Mississauga and Evangel Church, Kelowna.
Emeritus Pastoral Theology Professor at Summit Pacific College, Abbotsford, BC.*

Brett is a rare kind of pastor—one who embraces mission and discipleship not just as a ministry value, but as a lifestyle. He is consistently leading by example with integrity, wisdom, passion, and perseverance. Brett's life and leadership are a powerful contribution to God's Kingdom, and I consider both him and his ministry to be a strategic investment. I wholeheartedly recommend Brett and Natalie as visionaries in Canada and beyond.

*-Dr. Greg Mitchell, Senior Pastor, Every Nation Church Vancouver.
Professor, Every Nation Churches and Ministries. Author, iGod*

"I thank God that Brett is saying yes again to a pioneer a new church community in Canada. We need more church planters who want to make and mobilize displaces in cities across Canada. I am struck by his passion to reach people who might have no connection at all to christians or a local church. It's important in our time to invest in pioneering works like this. That is why our church community is supporting this initiative through our church planting funds."

- Jason Ballard, Lead Pastor, The Way Church Vancouver. Founder, The Pastorate.

"I have known and served with Brett for three years; he meets you where you are in your journey and encourages you with steps to grow your faith. We are excited to partner on this church plant.

-Irene Yung, Director of Operations, NAI Commercial. Member of CityLights Church

"I give Brett my highest recommendation. He is a team-player, a strong communicator, and a true joy to be around."

-Paul Dean, Executive Director of Soma Churches North America

"I can't say enough about how much Brett has helped me in putting together a comprehensive discipleship pathway. Brett genuinely cares about helping churches produce disciples who make disciples. His passion, wisdom, and ongoing support have been a tremendous blessing, and I highly recommend him to anyone looking to strengthen their church's discipleship efforts!"

-Kareem, Church Planter & Lead Pastor, Ajax, ONT

Sign-up for prayer updates, give, and learn more at
www.clvan.ca/sendtheDonalds