

WELCOME TO KINGSWOOD CHURCH

BUFFALO GROVE

DECEMBER 14, 2025



Interested in Children's & Youth Programs?
Email Jenn Sawyer, Director of Children, Families,
and Welcoming at jsawyer@kingswoodumc.com

Visit KINGSWOODUMC.COM/PRAYER to submit prayer
requests and view this week's prayers and concerns.

Visit www.kingswoodumc.com to:

- ♦ Sign up for our E-News
- ♦ Sponsor altar flowers
- ♦ View upcoming events & serving opportunities
- ♦ Connect with us if you are a first-time guest



Download
Kingswood's
Mobile App!

Follow Us on
Social Media!



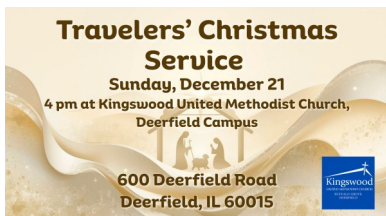
Welcome to Kingswood on this Third Sunday of Advent, a season of four weeks that prepares us for the birth and coming of Christ. The colors are purple and blue, representing royalty and confession. The Advent Wreath is a beautiful symbol, guiding us on this journey of hope, peace, joy, and love. Today's candle is the JOY candle, pink as a sign of light and healing. Our sermon series is **An Unlikely Advent: Extraordinary People of the Christmas Story**. Over these days, we will meet the various people who were part of the Christmas Story. Today, we meet King Herod and the Magi, experiencing the brokenness of corrupt power in Herod and the amazing courage of the Magi. Welcome to Kingswood!



Join us for Christmas Eve Services at both our campuses on **Wednesday, December 24**, as we celebrate the birth of Christ. Our Deerfield campus will host a child-friendly, blended service at 4:00 pm with carols, communion, and candles. Our Buffalo Grove campus will have services at 12:00 pm (carols, candles, and communion), 4:00 pm (Our Children, Youth, and Family Service), and our 10:00 pm formal service with string ensemble, soloists, carols, communion, and candles.



Join us on **Sunday, December 21** at 10:00 am at the Buffalo Grove campus for our annual Choral Advent Service: O Come, Emmanuel. We will have strings, guest singers, and reflections. You won't want to miss out on this service of healing, peace, and prayer. There will be no 9:00 am or 10:30 am service on this day.



We are happy to introduce our new Travelers' Christmas Service this year. Celebrate Christmas with us early on **Sunday, December 21**, at 4:00 pm at our Deerfield campus before going out of town to visit loved ones. All are welcome!



Join us for our annual Blue Christmas Service at 7:00 pm on **Tuesday, December 16**, in the sanctuary of the Buffalo Grove campus. This special service helps those of us who find the holidays less than joyful due to loss and grief. Come and experience a quiet, thoughtful service with songs, candles, and prayers. All are welcome!



Be a part of the 10th Care-A-Van Caroling Crew! The Crew will be spreading holiday cheer at two local memory care facilities. We will meet at Kingswood Buffalo Grove by 9:30 am on **New Year's Day** for coffee and donuts before caravanning to our first stop. Bring the whole family, friends, or neighbors...all are welcome!



If you would like to sponsor Christmas poinsettias in honor, celebration, or remembrance of a loved one, please complete the online form at www.kingswoodumc.com/christmas-flowers and submit your payment by **Monday, December 15**. The suggested donation for an arrangement is \$25. The sponsors will be published in the Advent Service bulletins on **Sunday, December 21** at both campuses, with a list available the following week.

GATHERING GOD'S PEOPLE

Prelude Michael Fritsch
Shepherd's Pipe Carol Wood

Welcoming and Centering Rev. James Preston

***Opening Hymn** *Blessed Be the God of Israel*
Blue Hymnal #209

***Words of Gathering** Donna Gavin
One: In this unlikely time, God's promise is made known!
All: We seek hope that rises in the shadows of loss!
One: We receive love that surprises and restores!
All: We experience joy that lights our way!
One: We open our hearts to peace that settles the chaos!
All: Come, Lord Jesus, Come! Change us in unlikely ways!

Opening Prayer (Unison)
God of truth, we remember the Magi and the hard challenge of facing Herod's fear and violence. Guard us from the cruelty that grows when power is threatened. Give us courage to stand for those who are most vulnerable and unseen. Lead us to protect the innocent, as we seek the light of your justice. Amen.

Blessing of the Nativity Rev. James Preston

The Lighting of the Advent Wreath The Deahl Family

Sung Response *What Child Is This*
Blue Hymnal #219, v. 1

Ministry of Music Allelus, acc. Michael Fritsch
Who Would Send a Baby?
by Mary Kay Beall

PROCLAIMING GOD'S WORD

A Reading from the Gospel *Matthew 2: 1-18*

One: Hear what the Spirit is saying to the Church.
All: Thanks be to God. Amen.

Song of Preparation *Away in a Manger*
Blue Hymnal #217

Sermon

Unlikely Courage

Rev. James Preston

Anthem

Chancel Choir
A Light Will Shine!
by Larson, Lloyd

RESPONDING TO GOD'S WORD

Prayer of Intercession

Beth Jayapalan

The Lord's Prayer

Our Father, who art in heaven, hallowed be thy name. Thy Kingdom come, thy will be done on earth as it is in heaven. Give us this day our daily bread. And forgive us our trespasses, as we forgive those who trespass against us. And lead us not into temptation, but deliver us from evil. For thine is the kingdom, and the power, and the glory forever. Amen.

Offering

Beth Jayapalan

Offertory

People Look East

Michael Fritsch
Shaw

Announcements

Rev. James Preston

***Hymn of Sending Forth**

Savior of the Nations, Come
Blue Hymnal #214

***Benediction**

Rev. James Preston

Postlude

Allegro moderato

Michael Fritsch
Ressiger

*Stand as you are able.

Liturgist: Donna Gavin

Scripture Reader: Beth Weeden

Ushers: Janet Marasco and Jay Jayapalan

Greeters: Larry and Sally Arends

Director of Music: Felicia Patton

Coffee Fellowship is sponsored by
the Kingswood PADS Homeless Ministry.

Your gifts make a difference! We thank you for your generous financial gifts to the ministry and mission of Kingswood Church.
You can give in the following ways:

Online at
www.Kingswoodumc.com/give



Kingswood
Mobile App

Mail your check: 401 W. Dundee Rd.
Buffalo Grove, IL 60089

Offering basket
in Fireside Room