



GLENDALE CITY CHURCH
of Seventh-day Adventists

Celebrating 120 Years of Ministry - January, 2026



January 10, 2026

WELCOME

We're Glad You're Here



TODAY AT GLENDALE CITY CHURCH

9:00AM (*Fellowship Hall*) - Come & enjoy a light breakfast with us at our Courtyard Café!

9:30AM (*Fellowship Hall*) - Grace Bible Study class with Rebecca Barceló both in-person and on Zoom. (*Meeting ID 818-244-7241*).

9:30AM (*Council Room*) - The Living Project support group meets weekly: "Telling My Story, Listening to Your Story. Living Our Story."

11:00AM (*Sanctuary*) - Worship with speaker Brett Poynter. The service can be viewed online at: youtube.com/glendalecitychurch.

12:30PM (*Downstairs Multipurpose Room*) - Open Table Worship is an informal gathering of seekers. All are welcome as we share food, story-telling, and interpersonal connections.

CITY KIDS PROGRAMMING: (12pm Pickup)

11:00AM (*Classroom 2*) - City Kids Children's Praise with music!

11:15AM (*Classroom 2*) - Tiny Tots (0-4 y.o.) Attend with guardian.

11:15AM (*Classroom 1*) - Children's Sabbath School (5-12 y.o.)

PREPARING

Love's as warm as tears,
Love is tears:
Pressure within the brain,
Tension at the throat,
Deluge, weeks of rain,
Haystacks afloat,
Featureless seas between
Hedges, where once was green.

Love's as fierce as fire,
Love is fire:
All sorts—infernal heat
Clinkered with greed and pride,
Lyric desire, sharp-sweet,
Laughing, even when denied,
And that empyreal flame
Whence all love came.

Love's as fresh as spring,
Love is spring:
Bird-song hung in the air,
Cool smells in a wood,
Whispering 'Dare! Dare!'
To sap, to blood,
Telling 'Ease, safety, rest,
Are good; not best.'

Love's as hard as nails,
Love is nails:
Blunt, thick, hammered through
The medial nerves of One
Who, having made us, knew
The thing He had done,
Seeing (with all that is)
Our cross, and His.

WORSHIP SERVICE

Prelude

Prelude and Fugue in F
Vincent Lübeck

Kemp Smeal

Call to Worship

Rebecca Barceló

Come, let us worship the God who loved us when He did not have to.

We come because God loved us first.

When we did not know Him—when we were yet enemies—God drew near.

This is love: not that we loved God, but that God loved us.

We do not love others because we are good or love perfectly.

We love because God is good and shows us how to love.

Even when we fall short, God's grace remains.

Come, let us worship the God whose love never fails.

Hymn of Praise

All People That On Earth Do Dwell

No. 16

Greetings

Rebecca Barceló

Prayer

Kaori Paschal

Worship in Song

God Is Our Refuge
by Allen Pote

Glendale Adventist
Academy Chorale

WORSHIP SERVICE

Scripture Reading

Jazmin Wong

John 13:34-35

I give you a new commandment, that you love one another.
Just as I have loved you, you also should love one another.

Worship in Song

King of my Life
by James Stipech

Glendale Adventist
Academy Chorale

Sermon

Just As I Have Loved You

Brett Poynter

Offertory

My Jesus I Love Thee
by Jeff Anderson

Glendale Adventist
Academy Brass Sextet

Hymn of Response

Amazing Grace

No. 23

Benediction

Brett Poynter

Postlude

Fanfare
by Nicolas Jacques Lemmens

Kemp Smeal



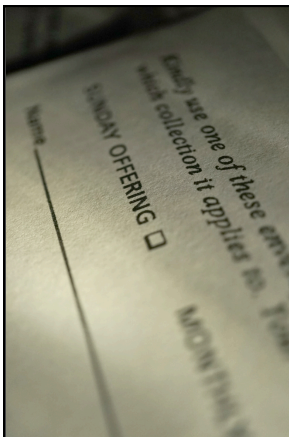
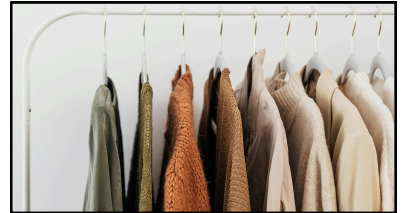
ANNOUNCEMENTS

We extend our best wishes to Pastor Uriel and Caitlin as they celebrate their 10th wedding anniversary while visiting family in Mauritius this month! We invite you to keep them in your prayers for safe and smooth travels and will look forward to welcoming them back to church on January 24th!



Bring your families—and your best smiles—as we capture photos for our new church directory over the next few weeks! Photographer Mark Azali will be in the Narthex, and we invite you to stop by before or after the service on January 17, 24, or 31. We are excited to include you and your family in this special update to our church community.

As you clean out your closets in the new year, please consider donating gently used clothing, shoes, and jackets to GCC so that we can be ready to offer support when it is needed by community members. Contact Cheri Watson for more information. Thanks!



Offering Focus — Religious Liberty (Southern California Conference)

This Sabbath, January 10, our scheduled offering supports the Southern California Conference's ongoing efforts to promote and protect religious liberty. These funds help ensure the freedom to worship, serve, and live out our faith with integrity in our communities and beyond. For additional information about this important ministry, brochures are available on the bulletin side tables. Thank you for your faithful and generous support!

ANNOUNCEMENTS



Glendale City Church is gathering old stories and photos to use for our upcoming 120th Anniversary Weekend coming up on January 30 & 31! If you have any cherished snapshots or images from your time at GCC, please share them with us by emailing them to: office@glendalecitychurch.org.

10 Days of Prayer for Children (2026)

We begin our 2026 calendar year by joining the worldwide church in the 10 Days of Prayer for Children, a General Conference initiative inviting congregations everywhere to unite in intentional prayer with our children. The resource materials—available in both English and Spanish—include daily devotionals, prayer-centered activities, and ready-to-use PowerPoint visuals. All materials are easy to download and share. Learn more and access the resources at: children.adventist.org/10-days-of-prayer.



Young Adult Volunteer Opportunity

The SCC Conference's young adult group, One House, invites young adults to serve at the Dream Center in Los Angeles on Monday, January 19, 2026, from 9am–1pm. Volunteers will assist in the Dream Center's soup kitchen by helping with food preparation, serving meals, distributing snacks, and cleaning tables. Participants must be 18 or older, and space is limited to 30 volunteers, so early registration is encouraged. Sign up at: <https://tinyurl.com/dreamcenterform>.



Glendale MLK Day 2026

Community Gathering and Breakfast

THURSDAY, JANUARY 15, 2026

7:00 AM – 9:00 AM

**Glendale Elks Lodge #1289
120 E. Colorado Street
Glendale, CA 91205**

**Join community organizations to honor the great
Dr. Martin Luther King and to reflect on his
everlasting contributions.**

Keynote Speaker:

**Shannon Bradley, Chief Health Equity, Inclusion & Community Officer
Keck Medicine of USC**

Community Event Made Possible By:

*YMCA of Glendale, Glendale Memorial Hospital –
Dignity Health, The City of Glendale, Glendale Elks
Lodge #1289, USC Verdugo Hills Hospital, Adventist
Health Glendale, Filipino-American Business
Association of Glendale, YWCA of Glendale &
Pasadena, and the YMCA of the Foothills.*

*Event capacity is limited to 200 attendees; RSVP to
DMegerdichian@GlendaleCA.gov by January 8, 2026.*





YOU'RE INVITED TO

ACADEMY DAY

at Glendale Adventist Academy



**Friday,
Jan 16, 2026**

8:30 am - 12:30 pm

700 Kimlin Dr, Glendale, CA 91206

For: 8th grade students & parents



RSVP with QR Code!

- ✓ Tour the high school
- ✓ Meet teachers & students
- ✓ Worship, connect, & bond
- ✓ Win games & prizes



For more info:

818-244-8671



Visit us:

glendaleacademy.org

@glendaleadventistacademy

GLENDALE CITY
CHURCH
CELEBRATES

120 years
in Glendale

Friday, January 30

7:00 p.m. — Contemporary Worship Night, GCC Chapel
(with Pastor Andy Palomares)

Saturday, January 31

9:00 a.m. — Courtyard Breakfast

9:30 a.m. — History of Glendale City Church Lecture

11:00 a.m. — Sanctuary Worship Service

12:15 p.m. — Anniversary Group Photo in Front of Church

12:30 p.m. — Anniversary Lunch

2:00 p.m. — Organ Recital, with refreshments to follow

For more information, email questions to
office@glendalecitychurch.org, or contact the church
office at (818) 244-7241.

THANK YOU FOR SUPPORTING US!

Thank you for supporting Glendale City Church. Your generosity helps keep our church open, welcoming, and thriving.

Maintaining a facility like ours is costly, so we're inviting you to partner with us by choosing a monthly giving level to help cover the maintenance of this beautiful church.

- **Gold Level:** (\$500+/per month): Supports major maintenance and repairs, janitorial service, and water or power bills.
- **Silver Level:** (\$250-\$499/per month): Covers gas bill, trash services, and technology needs such as our GCC website costs.
- **Bronze Level:** (\$25-\$249/per month): Helps with property taxes, phone service, copier lease, office supplies, internet and gardening costs.

Scan here to donate:
(choose your level and select "set up recurring donation")



Thank you for helping us keep our church vibrant,
welcoming, and running strong!

STAY CONNECTED

PREACHING SCHEDULE

January 17:
Joshua Estrada

January 24:
Mike Quishenberry



**Download the GCC App to
see upcoming events & more!**



**Follow us on Facebook,
Instagram and YouTube!**

CHURCH OFFICE

818.244.7241

Anji Arm
Campus Administrator
office@glendalecitychurch.org

Pastor Uriel
uriel@glendalecitychurch.org

Pastor Rebecca
rebecca@glendalecitychurch.org



“REVEALING CHRIST, AFFIRMING ALL”
610 East California Avenue, Glendale, CA 91206