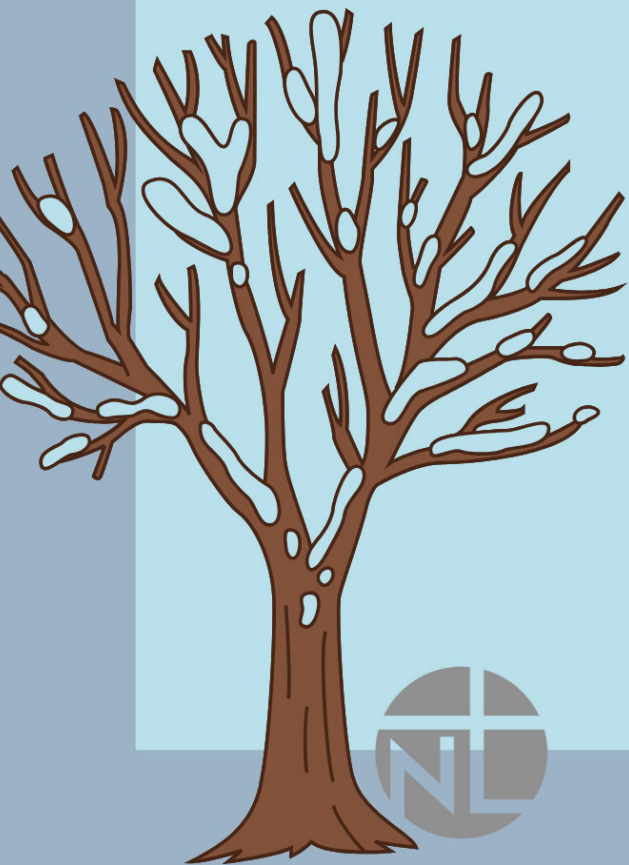


WINTER

NEW LIFE CHURCH CONNECT

MAGAZINE

JANUARY 25 - MARCH 22 - 2026



WHERE COMMUNITY BECOMES FAMILY

We are a church family that loves God,
tries to live like Jesus, learns from the
Holy Spirit, and desires to
lead others to new life in Christ

10 am Sunday Gathering

Watch from home: New Life Church App or Website
YouTube
Facebook Live

New Life Kids: 1st - 6th Grade
Pre-K - 5th Grade
Nursery (6 Months-24 Months)

New Life Students: Sign up to be part of the New Life
Students Group to be informed of
upcoming events (7th - 12th grade)

Students 6th - 12th grade Meet every 2nd
Sunday, Downstairs in the Discovery Room

Get The New Church App

Be sure to download our new
church app by scanning the QR code
or by going to newlifepolson.com.

Don't hesitate to contact the
church office if you need assistance.



Network: New Life Guest

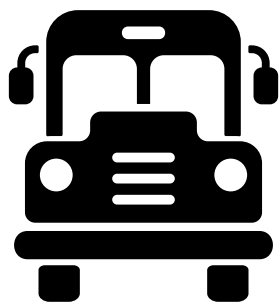
Password: WelcomeChurch



FIREWOOD MINISTRY

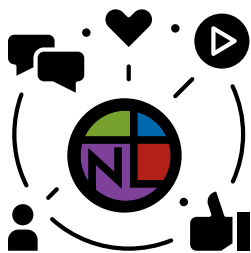
Pick up an application at the church office if you or someone you know is in need of firewood.

• A \$50.00 donation buys a cord of wood for someone in need. Sign up on the church app or at the "Yes" wall to serve on the Firewood Team and be notified about upcoming wood yard work days.



BUS MINISTRY

We bus kids to church on Sunday mornings and on Wednesday evenings during our Family Nights. There are several ways you can serve on this amazing team. **We need you!**



CONNECT

If you consider New Life your church family, fill out a Connect Card located at The Connect Booth or in the seat backs in the sanctuary. You can also fill out a digital Connect Card on the church app. **Get plugged in!**

- Sign up to receive the weekly newsletter
- Sign up to get notified about special events as well as upcoming Mens, Ladies, and Seniors Connect Groups.





PRAYER NEEDS

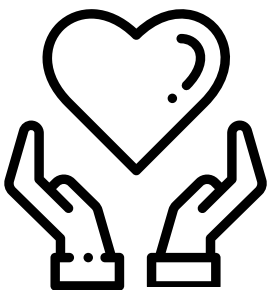
Fill out a Connect Card or download the church app to share your prayer requests. Join us at 9:25 am in the Sanctuary for our Pre-Service prayer Time.



GROW AND SERVE

We encourage you to say "YES" and **GROW** in one area and **SERVE** in one area. Fill out a card at our "Say Yes" wall in The Connect Room, download the church app or go to newlifepolson.com.

GIVE



- Giving envelopes are located at The Connect Booth and seat backs.
- Give during offering or use the giving box located on the wall as you leave the sanctuary.
- Download the church app and give online



**I AM PRAYING THAT YOU WILL
PUT INTO ACTION THE
GENEROSITY THAT COMES
FROM YOUR FAITH AS YOU
UNDERSTAND AND EXPERIENCE
ALL THE GOOD THINGS WE
HAVE IN CHRIST.
PHILEMON 1:6**

WEDNESDAY FALL FAMILY NIGHTS

January 28th - March 18th From 5:30 - 7:45 pm

Dinner served from 5:30 - 6:00 pm (donations accepted)

Classes for all ages start at 6:15 pm



FINE ARTS CHILI COOK-OFF

February 21st from 5:00-8:00

We hope you will join us for the annual Fine Arts Showcase and Chili Cook-Off. This is a night filled with great entertainment and delicious food! Scan the QR code to enter your prize winning chili and purchase tickets for this event. All proceeds will help pay travel expenses to the State-level Fine Arts.

GRIEF SHARE

March 5th - May 28th

6:00-8:00 pm every Thursday, upstairs in The Conference Room. GriefShare offers help and encouragement after the death of a spouse, child, family member, or friend.

Cost: \$20.00 For the Workbooks.

WATER BAPTISMS

March 22nd at 10:00 am

If you are ready to take the next step in your relationship with Jesus and be baptized in water, sign up at The Connect Booth or scan the QR code.



NEW LIFE STUDENTS WEDNESDAY NIGHTS

January 28th - March 18th (dinner at 5:30 & group at 6:15)

March 25th - May 17th (group at 6:00)

Students 7th - 12 grade plan to join us every Wednesday night for worship, teaching, and hanging out with some great people!

SECOND SUNDAY

New Life Students, you won't want to miss the great discussions and fun we have planned! Join Pastor Stephen and Tammy Doll in the Discovery Room downstairs at 10am on the Second Sunday of each month.

WINTER RETREAT

February 13-15th

Students, you won't want to miss this year's Winter Retreat in Libby. Register before February 5th to get a free t-shirt! A parental consent form must be completed before departure.

LIBBY ASSEMBLY OF GOD



FEB 13-15

COST

\$145

THE COUNTRY STORE

Volunteer Opportunity! The Polson Country Store is a non-profit volunteer run thrift store that donates money to the ministries offered by local churches. You can help this valuable ministry by signing up to volunteer with other people from New Life Church, Wednesdays from (10-1) or by donating your gently used clothes and household items.

POLSON BUSINESS PULSE

March 21 from 10-12 (arrive anytime, leave anytime)

If you are a local businesses owner, this event is for you. Come and hear speakers share real-world insight, local perspective, and actionable takeaways you can use immediately. RSVP is required. Contact Chamber@polsonchamber.com

UPON WAKING

Tuesdays at 5:00 pm

Ladies please join us in The Conference Room for a chance to connect with other women and learn together! We will be going through the book "Upon Waking" by Jackie Hill Perry. Books available for \$12.00.

NEW LIFE MEN

Every Other Friday in The Connect Room

Men! We're inviting you to join this group for real conversations, spiritual growth, prayer, encouragement, and Bible reading. No pressure, no pretense, just men seeking to walk faithfully with Jesus in their true identity and support one another along the way. Dinner will be served at 6:00 pm.



2026 Camp Deadlines



Standard Registration Starts
January 5th
\$50.00

Late Registration Starts
June 3rd
\$60.00

Registration Closes
June 10th

Teen Summer Camp



New Year's Special Opens
January 5th!
HS/Combo: \$210.00 MS: \$190.00

Standard Registration Starts
February 2nd
HS/Combo: \$230.00 MS: \$210.00



New Year's Special Opens
January 5th - \$190.00

Standard Registration Starts
February 2nd - \$210.00

Late Registration Starts
July 20th - \$250.00

Registration Closes
July 27th




MARCH 20-21
MISSOULA





FAMILY NIGHT

EVERY WEDNESDAY



DINNER 5:30 PM
CLASSES FOR ALL AGES 6:15 PM
STARTING JANUARY 28TH, 2026



2026 PINESWOOD DERBY

RACE DAY MARCH 1ST

AFTER CHURCH

CAR KITS AVAILABLE
STARTING JAN 28TH
\$5/EACH

EGGstravaganza

LUNCH

EGG
HUNT
11:30 AM

FUN

March
29th

Sunday
Gathering
10AM

NEW LIFE CHURCH

www.newlifepolson.com

sign up
to
serve



1414 2nd St. W. Polson

@New Life



SERVE



SAY YES!

**Say
Yes!**

Sign up
to serve
and be a
part of
what God
is doing



A Two-Year Initiative to Deepen Our Faith & Expand Our Reach

First Primary Goal

100% MISSION ENGAGEMENT

Ready for More is first and foremost a discipleship initiative. Our prayer is that every person who calls New Life Church home will take a **bold** step in their faith. In your prayer, service, and giving we want to see every part of the body walking strong in their fivefold gifting. If each of us commits to 100% of what God is asking us to do, we will accomplish all that He has in store for the future of our church.

Second Primary Goal

MISSION ADVANCEMENT

We are inviting everyone at New Life Church to join us on this journey God has prepared for us. During the **Ready for More** initiative, every dollar given will go to fuel our mission. This one fund initiative will help every gift go further and allow us to provide **MORE Ministry, MORE Reach, and MORE Impact.**

TWO YEAR GOAL = \$2.7 MILLION

A Defining Moment for Our Future

Ready for More isn't just about upgrades; it's about creating spaces where everyone is welcomed, discipled, and sent out to lead others to New Life. Like those before us, we are not building for today but for future generations. This isn't a remodel; it's a renewal of our mission. Join us as we pray boldly, give generously, and step into this God inspired journey.

MORE MINISTRY

\$1 Million

Fuel discipleship, prayer, and family ministries that are already transforming lives. This first portion simply continues our current ministry budget, funding what's already happening every week through your ongoing generosity.

MORE REACH

\$100k

Extend hope through local outreach, missions, and benevolence, meeting needs and building bridges in our community and around the world.

MORE IMPACT

*\$1.6 Million**

We look to renovate and reimagine our Connect Room, kitchen, coffee bar, bathrooms, and key access points. This will ensure greater accessibility, connection, and care for everyone visiting our church. A brand-new outdoor play area with a commercial grade playground and firepit will help create a warm, welcoming environment for all ages and generations to come.

*The total cost for this project is \$1.9 million. With \$300k already set aside in savings, our goal is to raise the remaining \$1.6 million through Ready for More to bring this vision to life.



We invite you to join us on this exciting journey as we follow God's direction for our church and for you specifically. We are believing in God to do more than we can imagine, and trusting Him to make this dream become a reality!

Our Next Steps

1

PRAY FERVENTLY

Ask God to move powerfully in your life and the life of our church. Invite the Holy Spirit to stir your heart and lead you to trust Him more deeply.

2

COMMIT FULLY

Step off the sidelines and into the story. We're believing for 100% engagement, every person using their gifts, giving generously, and growing in faith.

3

GROW INTENTIONALLY

Ask God where He's stretching your trust, challenging your comfort, or inviting you to lead. We grow stronger when we grow together.

4

GIVE SACRIFICIALLY

Ask God to lead you in faith-filled generosity. Let your giving reflect your dependence on Him and your devotion to His mission.

A Message From Pastor Chriss

In 1945, Rev. A.J. Morrison took to the sidewalks of downtown Polson with a portable organ and bold faith. Driven by a desire to see a Spirit-led movement of God in the Mission Valley, he launched what is now New Life Church. Now it's our turn to say "Yes," because we're **Ready for More**.

God is stirring something fresh in our church! We are seeing prayer culture deepen, young people are thriving, small groups are multiplying and our church is growing in spiritual maturity. But while this momentum rises, our physical space is holding us back and that's why we're stepping forward in faith.

We hold tight to the truth of Paul's words in Colossians 2:7:

"Let your roots grow down into Him, and let your lives be built on Him. Then your faith will grow strong in the truth you were taught, and you will overflow with thankfulness."

That's our prayer, for deep roots, strong faith, and a future overflowing with impact. Let's build what lasts!

- Pastor Chriss Sopke Sr. -



NEW LIFE
CHURCH