

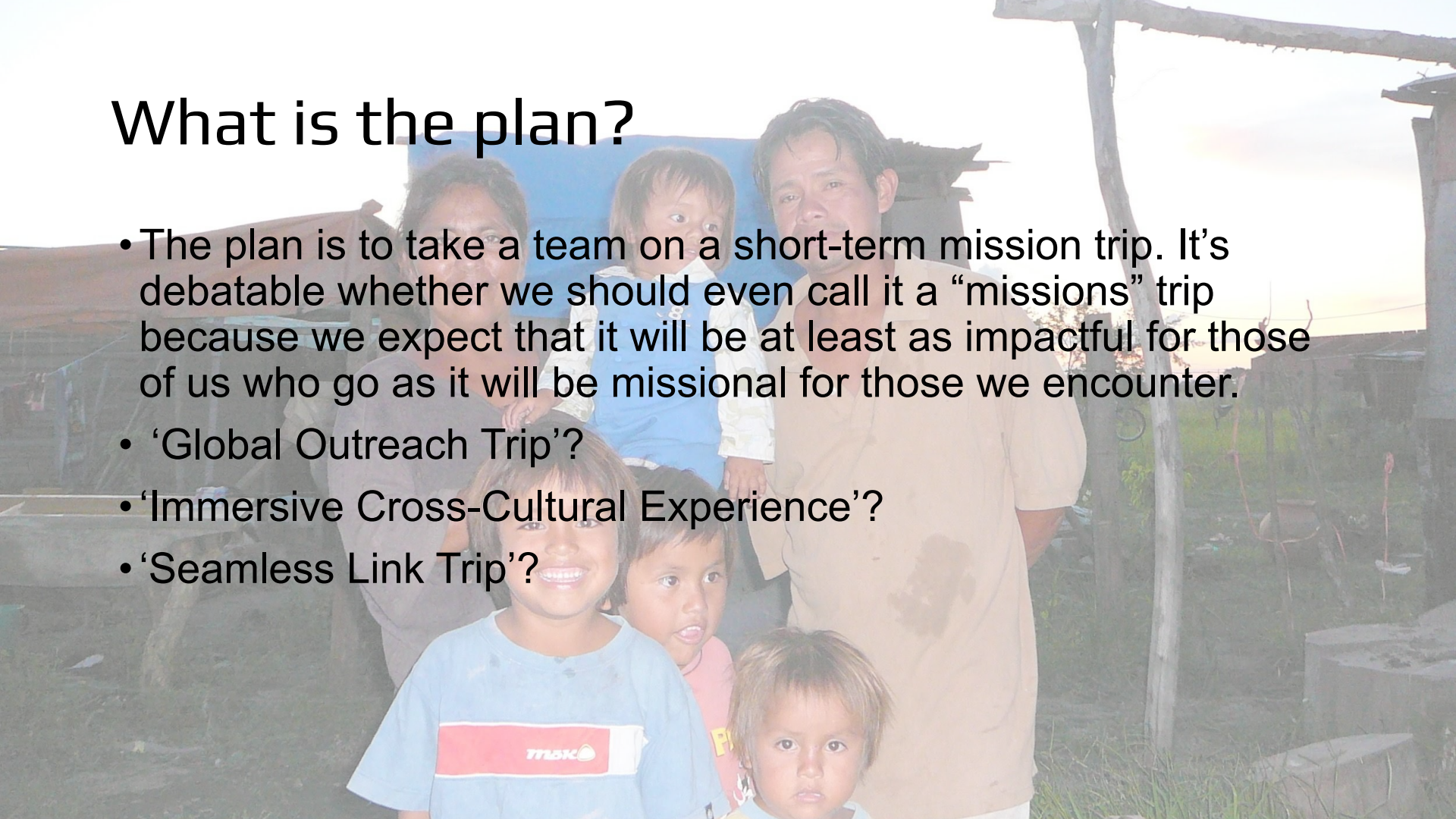


A photograph of a family of five in a rural setting. A woman on the left holds a young child in a blue vest. A man on the right stands with his hands behind his back. In the foreground, two more children are visible, one wearing a blue shirt with a red and white 'max' logo. The background shows a simple structure with a blue tarp and a sunset sky.

Bolivia Seamless Link Trip

What is the plan?

- The plan is to take a team on a short-term mission trip. It's debatable whether we should even call it a “missions” trip because we expect that it will be at least as impactful for those of us who go as it will be missional for those we encounter.
- ‘Global Outreach Trip’?
- ‘Immersive Cross-Cultural Experience’?
- ‘Seamless Link Trip’?



Where are we going?

We plan to go to Santa Cruz, Bolivia.

Here are some places that we could potentially go to while in country with Ken:

- La Jornada (“The Journey”) is a residence for up to fifteen young men based in Santa Cruz, Bolivia. La Jornada provides these young men with a home while they study and complete their post-secondary education. All of these young men are ex-street kids or were abandoned as children and who have completed high school while living in one of the many orphanages spread across Santa Cruz.
- Mision Timoteo (“Mission Timothy”) takes care of underprivileged children who live with their parents in prison, street children and children who are abandoned.
- Ministerio Gracia takes care of underprivileged children and their families in the San Isidro area.

Where are we going?

We plan to go to Santa Cruz, Bolivia.

Here are some places that we could potentially go to while in country with Ken:

- YWAM El Camino (“The Way”) is a boys street kids home, ages 12-18.
- YWAM El Alfarero (“The Potter”) is a girls street kids home, ages 12-18.
- Compassion Bolivia operates child development centres around the world in an effort to respond to child poverty.
- Novō Communities is a residential addiction treatment centre
- Remember Nhu works with at-risk indigenous villages to prevent sexual exploitation in regions with historically high rates of child trafficking.

When are we going?

- We are targeting the trip for the February break week in 2026 but we expect to leave a day or two before that week and return a day or two after so that we can, hopefully, fit in about 10 days in Bolivia. That puts us at around February 12th to 25th, 2026 (the February break week runs from Saturday, February 14th to Sunday, February 22nd).
- Our intention is that those who plan to go on this trip will engage in fundraising activities and times of preparation in the months leading up to this trip. So, we will begin preparing for this trip in September 2025 and team members can expect to participate in a weekly time slot which we will negotiate based on the availability of those going.

Why are we going?

- We serve a missional God who “became flesh and made his dwelling among us”. He has commissioned us to “make disciples of all nations”, so taking our faith cross-culturally really is core to our “mission” as followers of Jesus. Underneath all of that, it’s foundational to consider that God is worthy to be worshiped not only by us and those of our own people group, but by people from every tribe tongue and nation.
- Strategically, we hope to be able to come along side our Seamless Link partner and the ministries he is connected with. And, we hope to inspire those who go to consider how they can be a part of reaching the nations with the message of Jesus.

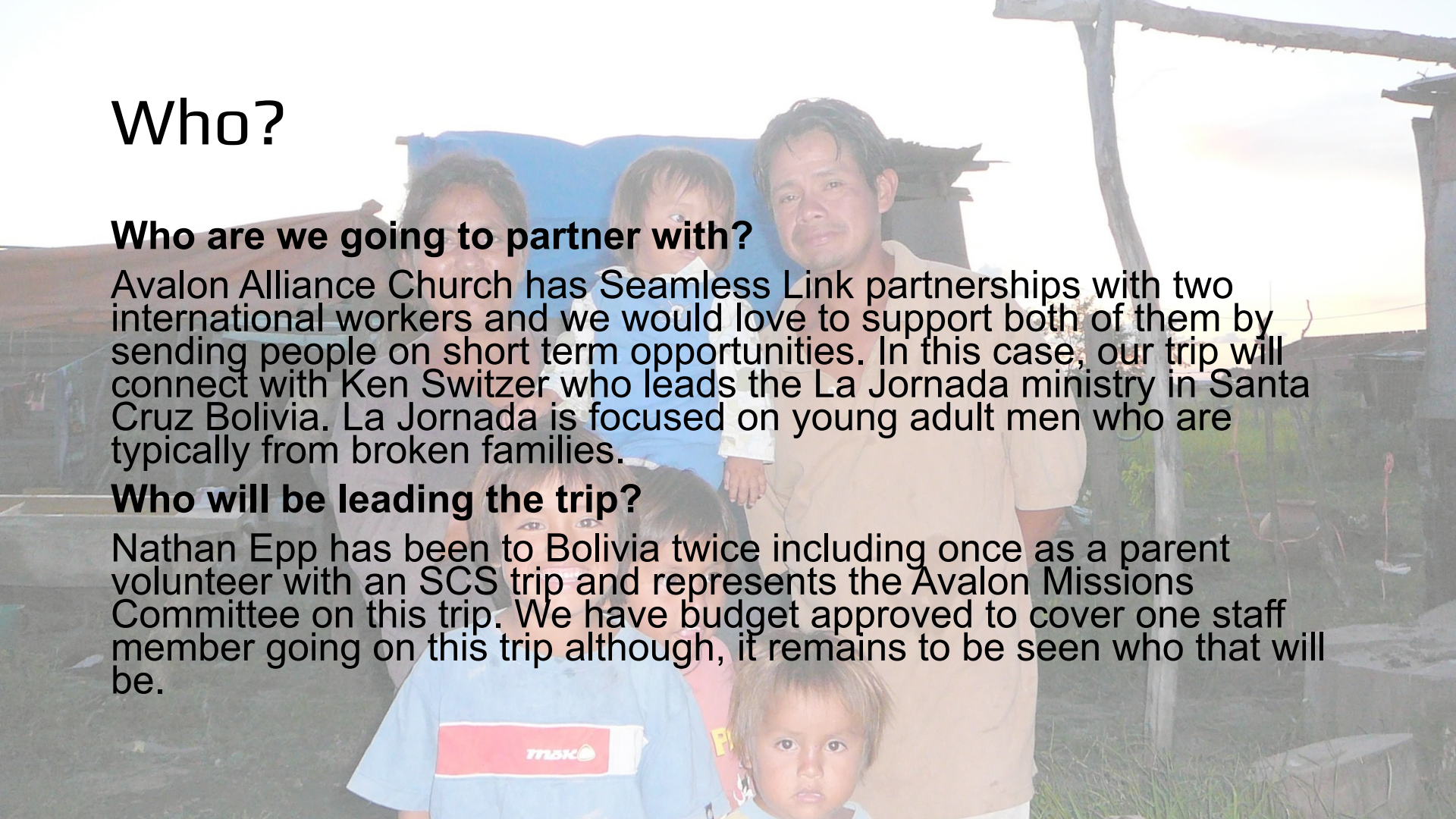
Who?

Who are we going to partner with?

Avalon Alliance Church has Seamless Link partnerships with two international workers and we would love to support both of them by sending people on short term opportunities. In this case, our trip will connect with Ken Switzer who leads the La Jornada ministry in Santa Cruz Bolivia. La Jornada is focused on young adult men who are typically from broken families.

Who will be leading the trip?

Nathan Epp has been to Bolivia twice including once as a parent volunteer with an SCS trip and represents the Avalon Missions Committee on this trip. We have budget approved to cover one staff member going on this trip although, it remains to be seen who that will be.



Who?

Who can go?

- This trip is open to adults and youth from Avalon Alliance Church.
- We plan to spend considerable time together preparing for this trip as a team and once our core team has been formed, we will select a weekly time slot. So, anyone planning on coming should expect to commit to participating in the preparation activities and fundraising activities along with the rest of the team.
- We will be providing an application form for those interested in coming on the trip.



How?

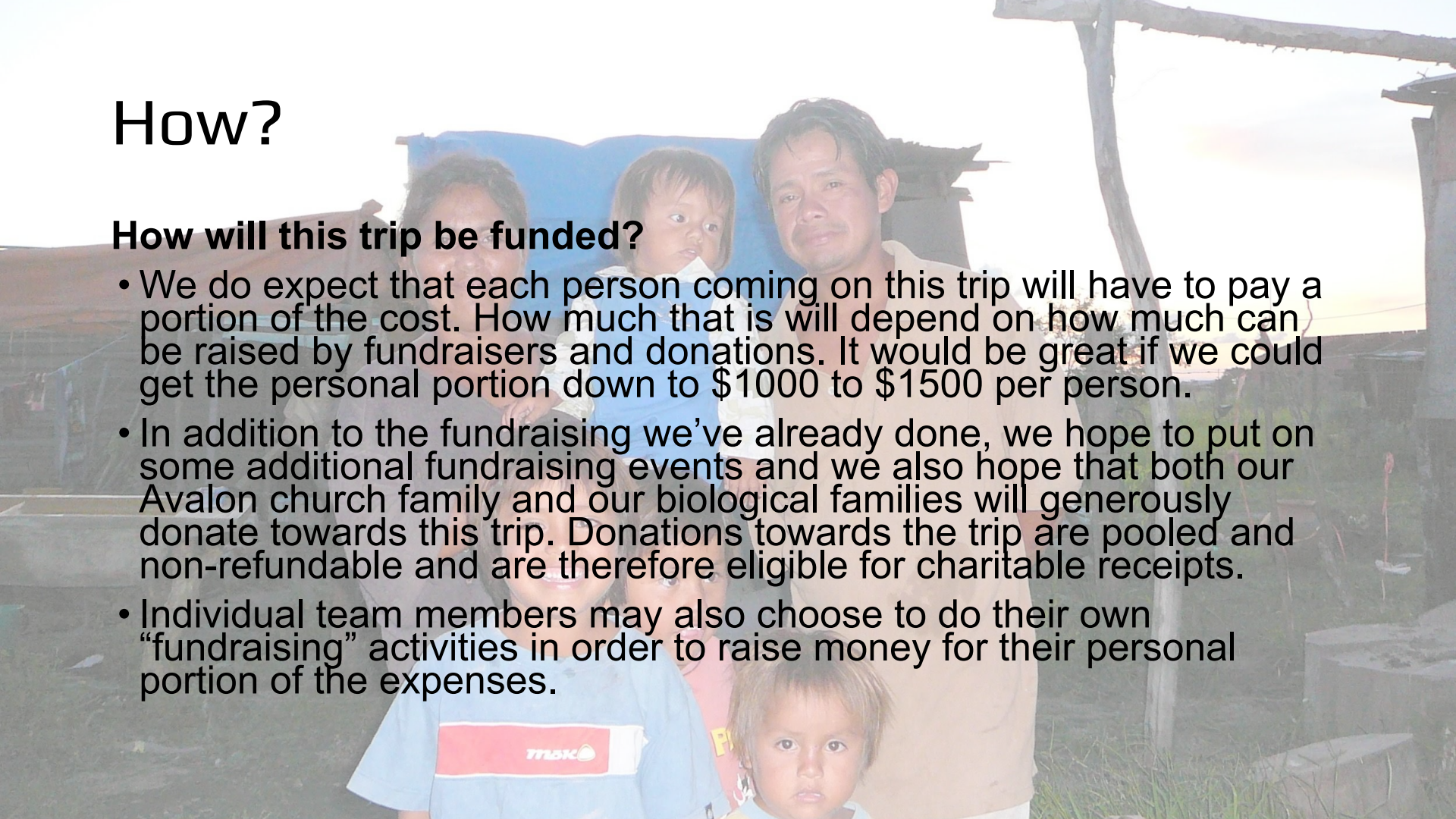
How much will it cost?

- Flight costs are the largest portion of the expenses for this trip. If we're flexible with our departure and return dates, I have seen return flights as cheap as \$1050 per person and they range up to twice that amount. Other costs include checked bags, flight insurance, meals, transportation, and accommodations in Santa Cruz and other unanticipated expenses.
- At SCS, they've been able to get flights for between \$1600 and \$1850 per person including insurance and a checked bag and they've budgeted a total of \$3500 per person. We expect our costs to fall somewhere around \$2500 to \$3000 per person.

How?

How will this trip be funded?

- We do expect that each person coming on this trip will have to pay a portion of the cost. How much that is will depend on how much can be raised by fundraisers and donations. It would be great if we could get the personal portion down to \$1000 to \$1500 per person.
- In addition to the fundraising we've already done, we hope to put on some additional fundraising events and we also hope that both our Avalon church family and our biological families will generously donate towards this trip. Donations towards the trip are pooled and non-refundable and are therefore eligible for charitable receipts.
- Individual team members may also choose to do their own "fundraising" activities in order to raise money for their personal portion of the expenses.

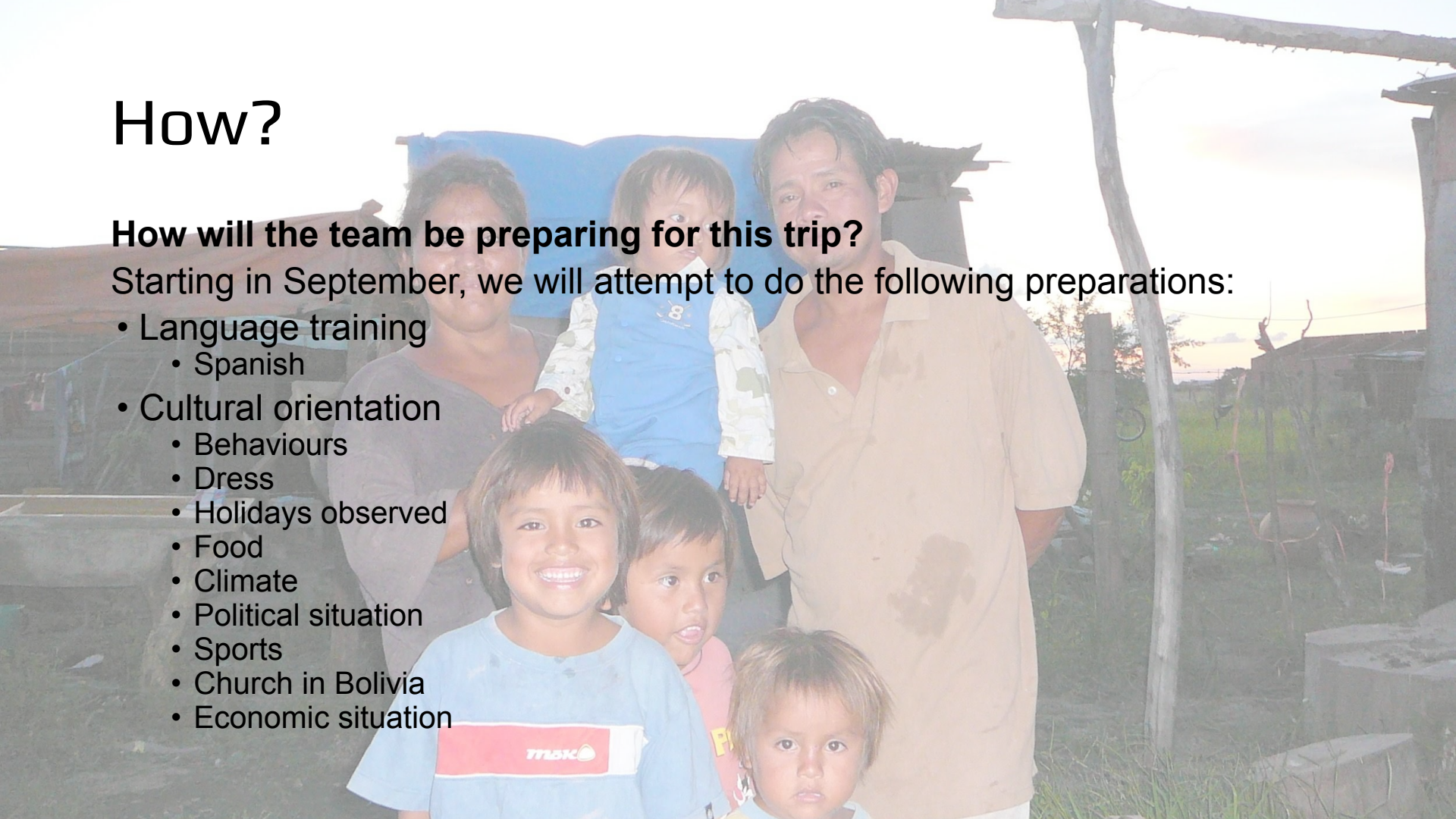


How?

How will the team be preparing for this trip?

Starting in September, we will attempt to do the following preparations:

- Language training
 - Spanish
- Cultural orientation
 - Behaviours
 - Dress
 - Holidays observed
 - Food
 - Climate
 - Political situation
 - Sports
 - Church in Bolivia
 - Economic situation

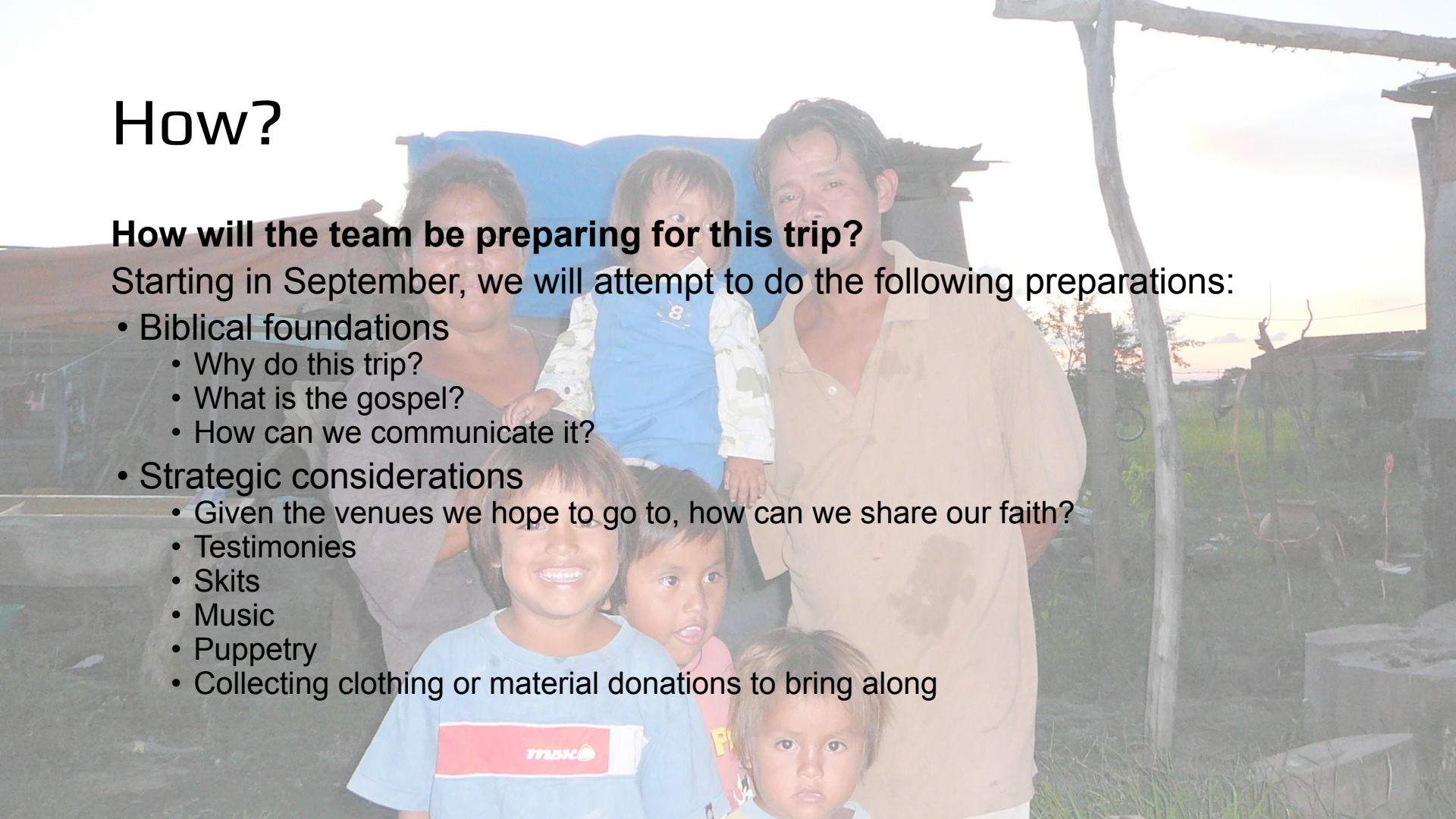


How?

How will the team be preparing for this trip?

Starting in September, we will attempt to do the following preparations:

- Biblical foundations
 - Why do this trip?
 - What is the gospel?
 - How can we communicate it?
- Strategic considerations
 - Given the venues we hope to go to, how can we share our faith?
 - Testimonies
 - Skits
 - Music
 - Puppetry
 - Collecting clothing or material donations to bring along

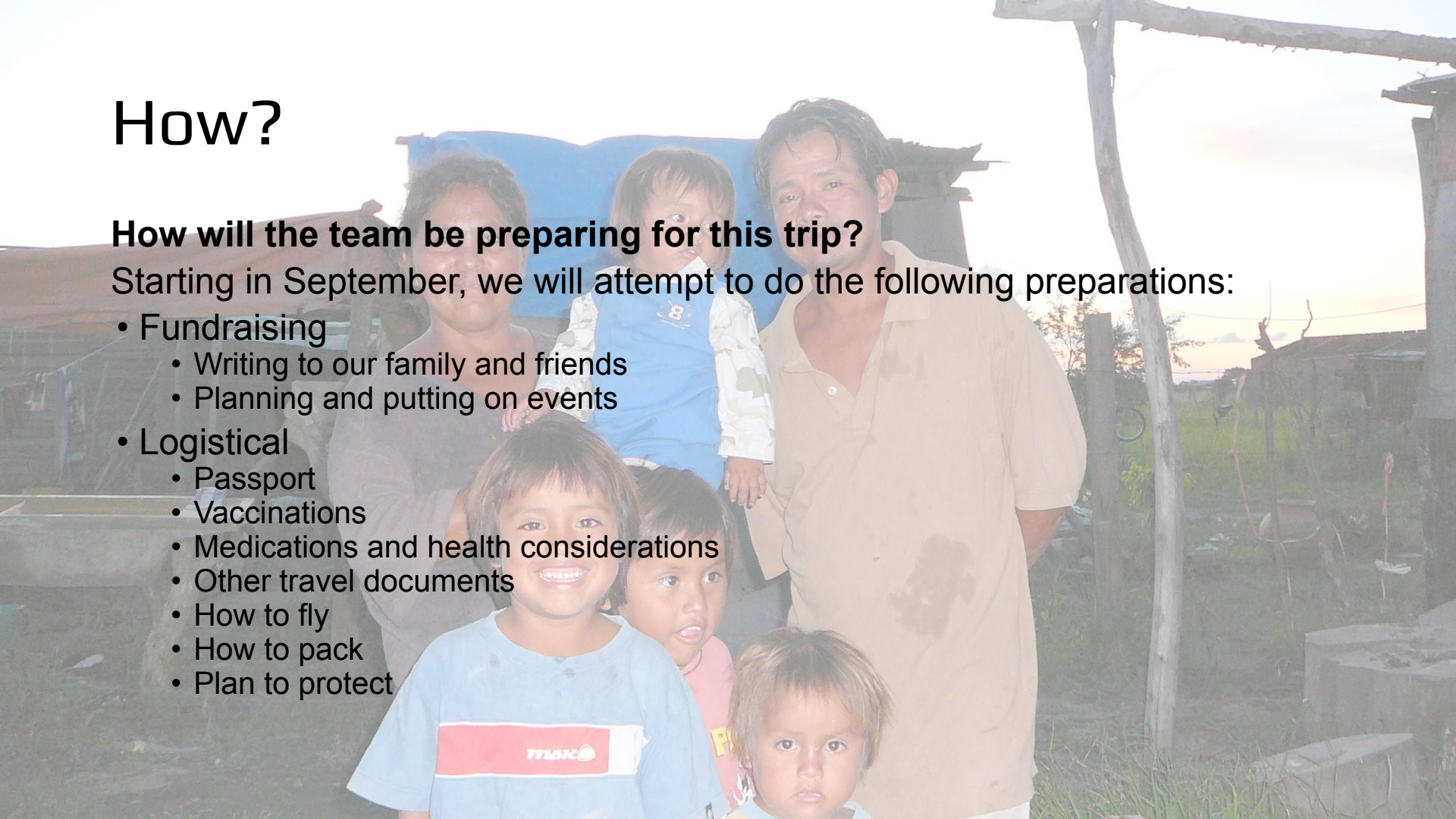


How?

How will the team be preparing for this trip?

Starting in September, we will attempt to do the following preparations:

- Fundraising
 - Writing to our family and friends
 - Planning and putting on events
- Logistical
 - Passport
 - Vaccinations
 - Medications and health considerations
 - Other travel documents
 - How to fly
 - How to pack
 - Plan to protect





Q & A?

Contact me if you want a copy of this information:

Nathan Epp

nathan.epp@hotmail.com

306-227-9427

Also on Facebook and WhatsApp

Prayer and Milkshakes

