



SUNDAY, JUNE 16, 2024  
FOURTH SUNDAY AFTER PENTECOST  
FATHER'S DAY  
TEN O'CLOCK IN THE MORNING



The First Congregational Church of Greenwich declares itself to be open and affirming; open to all for participation, membership, leadership and employment, and affirming of all who wish to join us as children of God. We continue to give thanks for God's guidance in our journey of faith.

We welcome you this day and are glad you made the choice to join us for this worship service. May it be a blessing to you.

---



## CHILDREN IN WORSHIP

*God puts the wiggle in children  
and calls it good... and so do we!*

At First Church, we believe the way we welcome children in worship directly affects the way they respond to God, to the church, and to one another.

To welcome children as they are in worship, we have our **PrayGround**, located in the Chapel (right side of the Meetinghouse), where children and others of all ages can engage in worship

through movement, sensory materials, and prayerful play.

The presence of all God's children is a gift to the church, which offers hope for all.

Scan the QR code for FAQ and tips about our PrayGround.



## GET THE FAMILY MINISTRY NEWSLETTER

Using your smartphone camera, scan the QR code here to sign up for our weekly Family Ministry newsletter. You can read about Church School, Regional Youth Ministry, and more!

## SUPPORTING FIRST CHURCH

Using your smartphone messaging app, text **FCCOG Donate** to **73256** or click [HERE](#) to access the online giving webpage, or scan this QR code to donate.



*First Church is a mask-friendly community of faith.  
Anyone who prefers to wear a mask at church should feel comfortable doing so.*

# ORDER OF WORSHIP

## PRELUDE

*Sing Hallelujah, Praise The Lord!*  
John C. Bechler (1784-1857)  
Kristen Bodenstein, trombone  
Dr. Craig Scott Symons, organ

## CHIMING OF THE HOUR

## CALL TO COMMUNITY

Reverend Cydney Van Dyke

*Please sign and pass the red Fellowship Pad found at the end of your row near the center aisle, then pass it back to the center aisle, noting the names of those worshipping near you so you may greet them at the end of worship.  
If you are the person on the center aisle, please remove the completed sheet and place it in the plate during the offering.*

## CALL TO ANNUAL MEETING

Carol Woodman, Church Clerk

## †CALL TO WORSHIP

One: Eternal God, whose breath is the universe, whose word is the world,

**All: amazed, we praise you.**

One: Creating God, who with delight and play, with wisdom and beauty fashions every creature,

**All: in love, we thank you.**

One: Loving God, you weave us into the great web of life, which is our shared home, our common body, our one belonging.

**All: Grateful, we worship you.**

## CHORAL INTROIT

## †HYMN

*When Morning Gilds The Skies*  
35 Pilgrim Hymnal (red)

† Please rise in body or in spirit

### †PRAYER FOR WHOLENESS (in unison)

O God, maker of heaven and earth, of all that is, seen and unseen. You place us in your creation, and you command us to care for it. Your works declare glory and splendor, and you call us to praise and reverence.

Where we have degraded or destroyed earth's bounty, forgive us. Where we have taken beauty and majesty for granted, have mercy upon us. Where we have become estranged from the creatures with whom we share this planet, grant us your peace.

Renew us in the waters of baptism, refresh us with the winds of your spirit, and sustain us with the bread of life. In the name of Jesus Christ, and for the sake of the new creation, we pray. Amen.

*\*Moment of silence for personal reflection\**

### †ASSURANCE OF GRACE

### †PASSING OF THE PEACE

*God makes peace within us. Let us claim it. God makes peace between us. Let us share it.*

One: God has received us, pardoned us, and loved us; let us forgive each other in love and share the peace of Christ with a hand to hand, eye to eye, and heart to heart greeting. May the peace of Christ be with all of you.

All: And also with you.

### †RESPONSE (remain standing)

*Halle, Hallelujah*

Hal-le, hal-le, hal - le - lu - jah! Hal-le, hal-le, hal - le - lu - jah!

Hal-le, hal-le, hal - le - lu - jah! Hal-le - lu-jah! Hal-le - lu - jah!

The image shows two staves of musical notation in G major (one sharp) and 2/4 time. The first staff contains the melody for 'Hal-le, hal-le, hal - le - lu - jah! Hal-le, hal-le, hal - le - lu - jah!'. The second staff contains the melody for 'Hal-le, hal-le, hal - le - lu - jah! Hal-le - lu-jah! Hal-le - lu - jah!'. The lyrics are written below the notes.

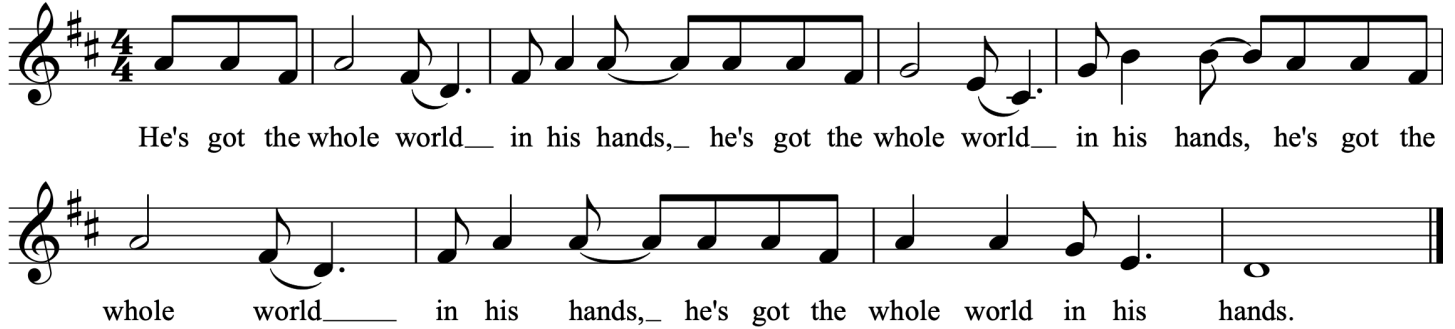
### CHILDREN'S MESSAGE

*(During the response, the children will return to their seats.)*

† Please rise in body or in spirit

## RESPONSE

*He's Got The Whole World*



## FIRST LESSON

*Job 38:4-15*

Common English Bible

Betsy Kreuter

Where were you when I laid the earth's foundations?

Tell me if you know.

Who set its measurements? Surely you know.

Who stretched a measuring tape on it?

On what were its footings sunk;

who laid its cornerstone,

while the morning stars sang in unison

and all the divine beings shouted?

Who enclosed the Sea behind doors

when it burst forth from the womb,

when I made the clouds its garment,

the dense clouds its wrap,

when I imposed my limit for it,

put on a bar and doors

and said, "You may come this far, no farther;

here your proud waves stop"?

In your lifetime have you commanded the morning,

informed the dawn of its place

so it would take hold of earth by its edges

and shake the wicked out of it?

Do you turn it over like clay for a seal,

so it stands out like a colorful garment?

Light is withheld from the wicked,

the uplifted arm broken.

## ANTHEM

*Give Laud Unto The Lord*  
Ernest Bullock (1890-1979)  
The Summer Choir

## SECOND LESSON

*Job: 38:16-38*  
Common English Bible

Have you gone to the sea's sources,  
walked in the chamber of the deep?  
Have death's gates been revealed to you;  
can you see the gates of deep darkness?  
Have you surveyed earth's expanses?  
Tell me if you know everything about it.  
Where's the road to the place where light dwells;  
darkness, where's it located?  
Can you take it to its territory;  
do you know the paths to its house?  
You know, for you were born then;  
you have lived such a long time!  
Have you gone to snow's storehouses,  
seen the storehouses of hail  
that I have reserved for a time of distress,  
for a day of battle and war?  
What is the way to the place where light is divided up;  
the east wind scattered over earth?

Who cut a channel for the downpours  
and a way for blasts of thunder  
to bring water to uninhabited land,  
a desert with no human  
to saturate dry wasteland  
and make grass sprout?  
Has the rain a father  
who brought forth drops of dew?  
From whose belly does ice come;  
who gave birth to heaven's frost?  
Water hardens like stone;  
the surface of the deep thickens.  
Can you bind Pleiades' chains  
or loosen the reins of Orion?

Can you guide the stars  
at their proper times,  
    lead the Bear with her cubs?  
Do you know heaven's laws,  
    or can you impose its rule on earth?  
Can you issue an order to the clouds  
    so their abundant waters cover you?  
Can you send lightning so that it goes  
    and then says to you, "I'm here"?  
Who put wisdom in remote places,  
    or who gave understanding to a rooster?  
Who is wise enough to count the clouds,  
    and who can tilt heaven's water containers  
    so that dust becomes mud  
    and clods of dirt adhere?

## MESSAGE

*The Great Unknown*  
Reverend Patrick Collins

## †HYMN

*Heaven And Earth, And Sea And Air*  
75 Pilgrim Hymnal (red)

## PRAYERS OF THE PEOPLE

### THE LORD'S PRAYER (in unison)

Our Father, who art in heaven, hallowed be thy name. Thy kingdom come. Thy will be done on earth, as it is in heaven. Give us this day our daily bread. And forgive us our debts, as we forgive our debtors. And lead us not into temptation, but deliver us from evil: for Thine is the kingdom, and the power, and the glory forever. Amen.

## CALL TO OFFERING

Lynn Robertson

## OFFERTORY ANTHEM

*Praise God In His Holiness*  
Dudley Buck (1839-1909)  
The Summer Choir

## †DOXOLOGY

*Praise God, From Whom All Blessings Flow*



Praise God from whom all\_ bless - ings flow; Praise God all crea-tures here be - low.



Praise God a- bove ye\_ hea - ven'ly host; Cre - a - tor, Son, and Ho - ly Ghost. A - men.

## †PRAYER OF DEDICATION

## †HYMN

*Jesus Shall Reign Where'er The Sun*  
202 Pilgrim Hymnal (red)

## †BENEDICTION

## †CHORAL RESPONSE

## †POSTLUDE

*When Morning Gilds The Skies*  
Dale Wood (1934-2003)

† Please rise in body or in spirit

*All hymns reprinted with permission under ONE LICENSE #A-726454. All rights reserved.*

Join us for Community Hour in the Memory Garden (weather permitting - or Auditorium) following worship this morning where you can greet one another, have a cup of coffee, and a light snack. Hosts for June are members of the Outreach committee.

**COMMUNITY**  
  
**HOURL**



## CALL TO ANNUAL MEETING

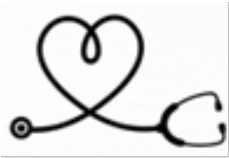
The 353<sup>rd</sup> Annual Meeting of the members of the First Congregational Church of Greenwich, Old Greenwich, CT is hereby called for Sunday June 23, 2024 in the Meetinghouse immediately following the 10 am worship service for the following purposes:

- To hear and act upon the report of the Nominating Committee and to elect officers and Committee members and to fill other positions for the fiscal year beginning July 1, 2024
- To adopt the budget for the fiscal year beginning July 1, 2024
- To hear certain reports of the pastors, officers and committees
- To transact such other business as may properly come before the meeting

Members are encouraged to attend in the Meetinghouse if possible and comfortable. However, if you join remotely via Zoom.us, please follow the instructions in the Friday emails. The meeting may be recorded for the purpose of taking minutes.

Carol Woodman,  
Church Clerk

## BLOOD PRESSURE SCREENING



Sue Asselin, Parish Nurse is available for blood pressure screenings and health consultations following today's worship service. If community hour is outside, look for her there. If inside, she will be in her office, just to the right of the Auditorium stage. During the week, she is available by appointment by calling 203-637-1791 ext. 821.

## THE RUMMAGE ROOM

Shopping hours are Monday through Thursday from 11 a.m. until 3 p.m., with the same hours for donation drop off. Needs this week are: summer handbags, summer shoes for all.



## WOMEN'S FELLOWSHIP SUMMER SOCIALS

The first of three Women's Fellowship Summer Socials is Monday, June 24 from 5:30 pm at the Sue Baker Pavilion at Greenwich Point. The rain date is the following evening. We bring our own food/drinks and meet for an informal gathering. Feel free to bring a friend/neighbor. If you don't have a current Greenwich beach pass, we can arrange a ride from the church parking lot if you let Car

Westbrook know. Future dates are: Monday, July 22 and Monday, August 26 with rain dates the following evenings. Questions? Contact Car Westbrook at [carwestbrook@optimum.net](mailto:carwestbrook@optimum.net).

## BEACH SERVICES

Our summer beach services are at Greenwich Point Park (Tod's Point) at 8 a.m. The services are held near Innis Arden Cottage, the main building on your left as you enter the park. All are welcome if you have a beach pass or not – simply state you're here for First Congregational Church services and the guard will let you in. Bring your beach chair or blanket. There will also be activities for children.

Dates for beach services are June 23, 30 – July 14, 21, 28 – August 4, 11, 18, 25



## SUMMER CHOIR

Please join the choir on Sunday mornings throughout the summer at 9:00 a.m. in the Meetinghouse for a warm-up and rehearsal of the music being sung that day.

Prior to 9 a.m., head to the 3rd floor, outside the choir room, pick up the anthem, bulletin, and a folder, then meet downstairs in the choir loft. Come any Sunday that you are available to help lead the congregation in worship. It also gives you a chance to experience worship from the choir loft. Everyone is welcome and no robes will be worn! If you have any questions, please contact Craig Symons (ext. 822).



## VISION TASK FORCE SURVEY RESULT MEETING

The Vision Task Force (VTF) invites the membership and friends of FCCOG to join us on Sunday, June 30, 2024 after the 10 a.m. service to hear the results of the Visioning Survey and Community Leader interviews done by the VTF.

## UCC MUSICIANS ASSOCIATION NATIONAL CONFERENCE



This past week you should have received an email about the National Conference of the UCC Musicians Association being held here at First Church July 10-13. There are lots of ways to volunteer during the conference, so check your email and click on the links to sign up! If you have questions, please contact Craig after worship, or email him at [craigs@fccog.org](mailto:craigs@fccog.org)

FIRST CONGREGATIONAL CHURCH OF GREENWICH

# CHURCH SCHOOL BEACH EDITION

NO  
BEACH  
PASS  
NEEDED

DURING FCCOG'S BEACH SERVICE  
A 8 M

@ GREENWICHPOINT-INNIS A.COTTAGE

AGES 3-6TH GRADE  
**SHORT & FUN**

JUNE  
23&30

JULY  
14,  
21&28

AUGUST  
4,11,  
18&25

FOR ?S EMAIL [KHALEIGHL@FCCOG.ORG](mailto:KHALEIGHL@FCCOG.ORG)

# THE FIRST CONGREGATIONAL CHURCH OF GREENWICH

108 Sound Beach Avenue Old Greenwich CT 06870

203-637-1791 • [www.fccog.org](http://www.fccog.org)

## Ministers - All Members Of The First Congregational Church Of Greenwich

Senior Pastor

Associate Pastor

Minister of Music

Director of FCCOG Church School/Regional Youth Ministry

Parish Nurse

Church Office Coordinator

Financial Administrator

Administrative and Communications Colleague

Livestream Director

Audio Technician

Database Administrative Assistant

PrayGround Supervisor

Facility Manager

Senior Sexton

Junior Sexton

Director of First Church Preschool

Assistant Director of First Church Preschool

Pastor Emerita

Reverend Patrick Collins

Reverend Cydney Van Dyke

Dr. Craig Scott Symons

Khaleigh Laicher

Susan Asselin, RN

Wendy Spezzano

Greg Girolamo

Carolyn Samuel

Daniel Lepoutre

Bob Small

Sue Wilder

Amalia Samuel

Julio Yika

Curtis Gay

Brandon Speight Gay

Beth Genovese

Kayla Vozzella

Reverend Sally Colegrove



UNITED CHURCH  
OF CHRIST  
a just world for all