



Kingman First

SOUTHERN BAPTIST CHURCH

Dear Friend and Partner,

We have so much to be thankful for as God pours His blessings upon our Church. Since my last update in August of 2024, our Church has moved in impacting our community above and beyond our expectations and your partnership has played a key role. But, before I elaborate further on the “new” impact on our community, let me bring you up-to-date regarding *completed goals* achieved since August of 2024.



PHASE 1: MORTGAGE PAID OFF!

When we began *Reaching Forward* in October of 2023, our priority was to eliminate our mortgage debt of \$289,000 and as of January 2025 this became our reality! Thanks to you and your faithfulness, Kingman First SBC is 100% debt free! To celebrate this monumental event, on March 9th, our Church held a *Mortgage Burning Celebration* party in conjunction with our Church Chili Cook Off where we thanked the Lord for His guidance and recognized our *Reaching Forward* partners that made this dream a reality.

PHASE 1: CHRISTIAN COUNSELING, NEW SCHOLARSHIPS, AND NEW PARTNERSHIP UPDATES

As I mentioned in the last update, God led a retired clinical counselor to our Church who offers professional counseling services free of charge to those in need. In addition to this blessing, our Church decided to enhance this area of ministry to include *Advance*

Christian Counseling Scholarships

effective January 2025. The goal of the new scholarship program is to offer affordable Christian based counseling for those desiring deeper spiritual guidance from a theologically trained professional. If both of these blessings were not enough to help those in need, our Church became a pilot campus in Mohave County with [Communio](#) under the partnership of Arizona Mission Network of Southern Baptist Churches (AZMN) to be a center for marriage and family focused ministries effective May 1st! Impacting singles, marriages, and families has been a focal point for *Reaching Forward*, and with this new ministry partnership, God is verifying we are on the right track to make a difference! To read more about the partnership between AZMN and Communio, please read the article, [Arizona Baptist to Implement Marriage-strengthening Strategies](#) provided by the Baptist Press.



Kingman First SBC
3120 Hualapai Mountain Rd
Kingman, AZ 86401

PHASE 2: CHILDREN'S BUILDING AND NEW CHILDCARE CENTER & PLAYGROUND UPDATES!



Thanks to the Department of Homeland Security and the state of Arizona, our campus security enhancements have benefited our Children's building by upgrading security measures that included security auto locks on exterior doors and new cameras all around the building. In 2025 we were able to renew this reimbursable grant and with the help of [Will's Metal Fab](#), we are in the process of installing wrought iron fencing to secure the inner perimeter of our campus including entrances to the Children's building, Church foyer, Fellowship Hall and Education Building. Additionally, we fortified all windows and glass doors in our Church foyer, Administrative building, and Children's building with [Amarok Defense Company's](#) Double Shield Film for aggressive vandalism & shatter resistance. These first quarter security enhancements came with ZERO cost to Reaching Forward! Continual improvement on security for individuals and families on our Church campus is a major focus of ours and our goal is to complete the Children's building check-in desk and hopefully new flooring before the new school year of 2025.

With the growth of our Children's Ministry and impact on our community, in September of 2024, our Church opened Kingman First Childcare Center for infants to 4 years old and an aftercare program. With the hard work of Sarah Jo Hill, our Children's Ministry Director, our new Childcare Center became DES approved for 48 kids!



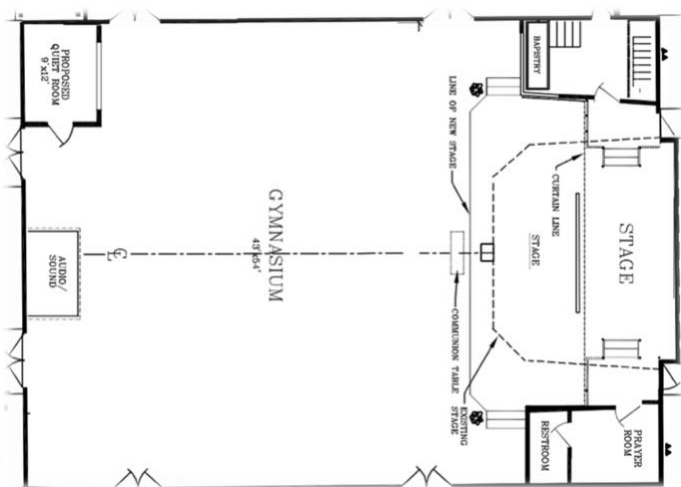
Our Childcare Center focuses on loving children and teaching them a Christian based preschool curriculum for future learning! We are still in discussion with [Joni & Friends](#) regarding enhancing our Children's building to accommodate those with special needs. With our new Childcare expansion, Rock Solid Yard Landscaping partnered with our Church to expand our new playground area for children and for outdoor activities and events for all the ministries taking place on our campus!

As our Childcare Center and Children's Ministry grows, Sarah Jo and her team have invited parents to our Church and children's events, and we are happy to report new families from the Childcare Center have come to Church!

Kingman First SBC
3120 Hualapai Mountain Rd
Kingman, AZ 86401

PHASE 2: STORAGE EXPANSION, SANCTUARY/MULTIPURPOSE ROOM ENHANCEMENTS, AND NEW CHAIRS

With our vision to *help people take their next steps with Jesus*, transformations are taking place on campus to accomplish this goal. Our storage expansion is underway to store our sanctuary chairs when not in use to make room for youth events, Vacation Bible School (VBS), Women’s and Men’s ministries, Church dinners, seminars and more. Additionally, any unused chairs and tables in our Fellowship Hall will be moved into our new storage to make room for maximal use of the Fellowship Hall for receptions, birthdays, baby showers, Bible studies, and any additional ministry needs!



As mentioned above, with the many functions our sanctuary accommodates, moving toward a complete multipurpose sanctuary is our goal this year. As our Church researched the wide variety of “sanctuary” chairs to accomplish multipurpose use, the *Cafetorium* chair was selected above all others. These new chairs are hypoallergenic, support 500lbs of weight, and can be stacked 27-35 chairs

high, versus 7 high with our current chairs and they weigh about 1/2 of our current chairs! The goal of these new chairs is to be multifunctional for the multiple ministries/events we facilitate in the sanctuary throughout the year. In addition to the new chairs, we will be removing the carpet in the sanctuary and foyer and will stain the concrete and seal it to

become our new floor. This will remove the stain issues we incur due to the many events held throughout the year and will allow us to offer an indoor area for recreation and Physical Education (P.E.) for Emmanuel Christian Academy (ECA) and explore sporting events for the Church, Children’s ministry, Childcare Center, Youth, and other ministries to engage in the new multipurpose sanctuary!





The new multipurpose sanctuary will include a *Wiggle & Giggle Quiet Room* located in the back of the sanctuary for those who need reduced stimulation or a place for nursing moms. With this new room comes the relocation of our portable baptistry and upgrading our stage to a single level ADA compliant stage. The stage upgrade will allow maximum use of the platform for our Church and Emmanuel Christian Academy for awards, talent shows, etc.

ADDITIONAL MINISTRY UPDATES: FOOD BANK, KIDS CAFÉ AND COMMERCIAL KITCHEN UPDATES

In 2024, our Helping Hands Food Bank distributed over 331,815 lbs. of food while [Kids Café](#) provided 5,111 meals! Kids Café not only provided afterschool meals to Emmanuel Christian Academy and our new Childcare Center, through Saint Mary's Food Bank, but they also distributed **39**



Thanksgiving boxes (complete meals. See photo) to families in need and hosted a "Happy Birthday Jesus!" Christmas party with **65** kids from Emmanuel Christian Academy and Kingman First Childcare Center. Both holiday events were accomplished because of donations from The Moose Lodge and Kingman Powerhouse Kiwanis Club! Children received a Christmas gift bag with toys, items, and evangelism tracks talking about what it means to follow Jesus!



In April of 2025, our Kids Café and Helping Hands Foodbank hosted a Classic Car show Fundraiser event on campus and raised \$3,800 and 1,500 lbs. of food for our food ministries! Kids Café is in discussion with St Mary's Foodbank to become a location for the [St. Mary's Backpack Program](#) that provides food to kids and their families to sustain them over the weekend. In addition to this possible new ministry of Kids Café, this summer we will continue with our Summer Lunch program and will launch our new [Summer Breakfast program](#)! Any child 18 years and younger can come to our Church, receive two free meals—breakfast **and** lunch—Monday through Friday!



Kingman First SBC
3120 Hualapai Mountain Rd
Kingman, AZ 86401



With the rise of our distribution of food comes the need for food storage expansion and God moved in the hearts of people to fill this need. A family in our Church heard of the lack of space dilemma and donated their storage shed to increase our storage capacity for food! With the help of Rock Solid Yard Landscaping, Helping Hands Food Bank, Kids Café, and Church volunteers, the storage shed is now on our property ready to receive new loads of food for our expanding Kids Café ministry!

If this was not enough, Arizona Mission Network of Southern Baptists (AZMN) awarded our Church a \$10,000 grant toward the need for an external storage walk-in freezer for our food ministries! With the AZMN grant and other donations, we are halfway to our goal of acquiring this extremely needed freezer.



Another food ministry goal was to open a community Soup Kitchen with full commercial grade appliances. As of the writing of this newsletter, our Church has completed the commercial upgrade of the kitchen for this future ministry! We are praying for direction on how the Soup Kitchen will move forward but until then, our Church ministries, and Kids Café are utilizing the kitchen in addition to our Easter Sunday Breakfast, Christmas Dinner, and more! Please pray with us on how God desires to use this beautiful kitchen to feed people and introduce them to Jesus.

As you can see throughout this newsletter, God is preparing our Church and campus to become a destination where people experience genuine community and His presence as we invite people to follow Jesus. Future ministries will expand our ongoing efforts in inviting those in the community, who do not attend our Church, to an event on our Church campus that will impact their lives for the better as we help them *take their next steps with Jesus*. We strive to be responsible when handling God's resources (time, talent, and treasure) entrusted to us. We hope and pray you see our vision and are equally passionate for others to come to know Jesus as we find ways to invite people to this life transforming relationship with Christ. Becoming a debt-free multipurpose campus is one way we are moving toward accomplishing the Great Commandment *to love God and love others* (Mark 12:30-31) and the Great Commission to "*Go and make disciples...*" (Matthew 28:19).

In His Grip,
Pastor John Ramos
john@kingmanfirstsbc.com
Office: 928-753-3238

Kingman First SBC
3120 Hualapai Mountain Rd
Kingman, AZ 86401

***REACHING FORWARD* INFORMATION & SLIDES**

For more information about ***Reaching Forward*** and presentation slides, please click on the following:

- [Reaching Forward Information Page.](#)
- [Reaching Forward Presentation Slides.](#)

***REACHING FORWARD* SERMON SERIES**

To view the Sermon Series that explains ***Reaching Forward*** and our heart behind the campaign, please click on the following:

- [Reaching Forward: Investing in Changing Lives.](#)
- [Reaching Forward: Investing in God's Kingdom.](#)
- [Reaching Forward: Turning Limited Resources Into Unlimited Blessings.](#)
- [Reaching Forward: Enjoying The Adventure With No Regrets.](#)

WAYS TO PARTNER & GIVE

If you would like to give a *special donation* or know someone who would like to become a partner in prayer and giving, please click on the following and share as needed:

- [Partner in Prayer.](#)
- [Partner in Giving.](#)

**Kingman First SBC is 501(c)3 Non-Profit and donations are tax deductible*



Kingman First SBC
3120 Hualapai Mountain Rd
Kingman, AZ 86401