

Asbury Articles: August 27, 2025




Upcoming Sermon Series: “I See You”

September 7–28

God creates, knows, loves, and sees us in our full humanity. Yet, we often fall into the habit of assuming everyone is just like us. In our new worship series, “I See You,” we’ll explore Biblical stories that teach us how to listen to, respect, affirm, and act alongside others—so that we may also come to know God more fully.

Each week, a member of our congregation will share part of their ethnic heritage as together we learn to see one another more clearly.

 A resource for small groups is available [here](#). If you’d like a printed copy, please contact the [church office](#).



**ASBURY UMC
Women's Retreat**

**EMBRACING
HOPE**

A time to pause, connect, and find renewal
in God's presence.

Embracing Hope Women's Retreat

Registration due Sunday, August 31, for the Embracing Hope Women's Retreat, Friday, September 5, and Saturday, September 6, at Asbury. Registration forms are available in the church office, in Sunday worship, and attached here. The retreat begins on Friday with registration at 5:00 p.m., dinner at 6:00, and the program at 7:00. The Saturday program begins at 9:30 a.m., with light snacks and

lunch provided, and ends at 4:30 p.m. Join us for spiritual renewal, singing, crafts, meditation, and fun. Childcare will be provided for children registered by August 29.

In the midst of the busyness of our lives we are aware of the chaos, conflict, and change around us. It's a lot. So, we need a time to pause. This women's retreat offers us the chance to connect with each other and the power of God's presence right here with us. Join us as we explore, ponder, and find renewal.

Our retreat leader and facilitator this year is Rev. Kim Risendorph, retired United Methodist minister and former Asbury pastor and retreat leader. Kim has always been curious about our spiritual journey. Being a retired pastor, an end-of-life doula, hospice volunteer, and chaplain at Viamonte Retirement Community—all have deepened her awareness of how to live a meaningful and joyful life.

Questions? Contact Karen Bauman at 510-409-9760 or the church office.

Downloads and attachments

[Womens Retreat-Rev 2-2025 Registration Form.docx](#)

UPCOMING ASBURY EVENTS



Undie Sunday

Serving Others with Love


Undie Sunday – Final Week!


This is the last week to donate new underwear and socks for Asbury's Shower Ministry. Donations may be dropped off in the Narthex or church office by **August**

31, or shipped directly to the church. Monetary gifts are also welcome—just note “Undie Sunday” with your donation.

Thank you for your generosity!

Choirs start NEXT WEEK!

[» LEARN MORE](#)



Choirs Start Next Week! 🎵

All choirs begin their fall season following Labor Day:

- **Faith Choir** – Rehearsal Thursday, Sept 4 at 7:30 PM (Sanctuary); singing in worship Sept 7
- **Cherub, Rainbow & Youth Choirs** – Rehearsals Sunday, Sept 7 at 11:30 AM (Rooms 5, Sanctuary, Chapel)

Come make a joyful noise with us!

FAMILY SUPPER CLUB

Share a meal together
Build community
Time for kids to play

@ ASBURY UMC
LIVERMORE

WEDNESDAYS
6:00PM-7:30PM



Gather. Grow. Play.

Family Supper Club

Join us for a new weekly small group designed for all ages! Beginning **Wednesday, September 3**, we'll gather in the Fellowship Hall, courtyard, and playgrounds for a relaxed evening of food, friendship, and fun.

We'll share a **potluck-style dinner**, build community, and give kids time to play while adults connect and share in conversation.

📍 **Asbury UMC, Livermore**

📅 **Wednesdays, 6:00–7:30 p.m.**

Everyone is welcome—bring your family, a friend, or just yourself!

Questions? Reach out to our Children's Ministry Director, [Rachel](#).

Legalizing Annexation of Settlements

Jerusalem Metropolitan Bill



Rev. Michael Yoshii, Co-Chair
Friends of Wadi Foquin &
Special Guest from the Village of Wadi Foqun

The Jerusalem Metropolitan Bill introduced in the Knesset will legally annex settlements north, east, and south of the city. The village of Wadi Foquin is directly impacted being located near the southern settlement bloc. Learn about the proposed bill and it's impact upon Palestinian displacement.

Saturday, August 30th
12 noon - (light lunch served)
Asbury United Methodist Church
4743 East Avenue, Livermore
Please RSVP to Bob Johnson at bobjjr@aol.com.

Join Us for Lunch & Conversation: Voices from Wadi Foquin

Please join us for a rare opportunity to hear directly from a special guest from the village of Wadi Foquin in the West Bank for an update on how the village and the region is being impacted.

Reverend Michael Yoshii, co-chair of the Friends of Wadi Foquin will also speak about proposed legislation that would annex the village and other territory. We will meet in the Fellowship Hall on Saturday, August 30th, at Noon. A light lunch will be provided. In addition to hearing from our guest and Reverend Yoshii, there will be an opportunity for questions and discussion.

[RSVP to Bob Johnson](mailto:bobjjr@aol.com)



Visit to Oakland Museum: Black Housing in the East Bay

Asbury's Antiracism Group is sponsoring a special visit to the Oakland Museum of California on **Saturday, September 20**, to view the exhibition on Black housing in the East Bay. This is a powerful opportunity to learn and reflect together.

The cost is **\$25 per person**, with discounts available for groups of ten or more. To sign up or ask questions, please contact [Michele Rudd](#) by **Friday, September 5**.


Learn more about the exhibition [here](#).

Sew In 

August 28 | 1:00 - 3:00 PM | Room 11 and 12

United Women in Faith – Monthly Sew-In

 **Thursday, August 28**

 **1:00 – 3:00 PM**

 **Rooms 11 & 12**

Come enjoy fellowship and creativity as we sew together in support of meaningful missions. All are welcome!

ANNOUNCEMENTS

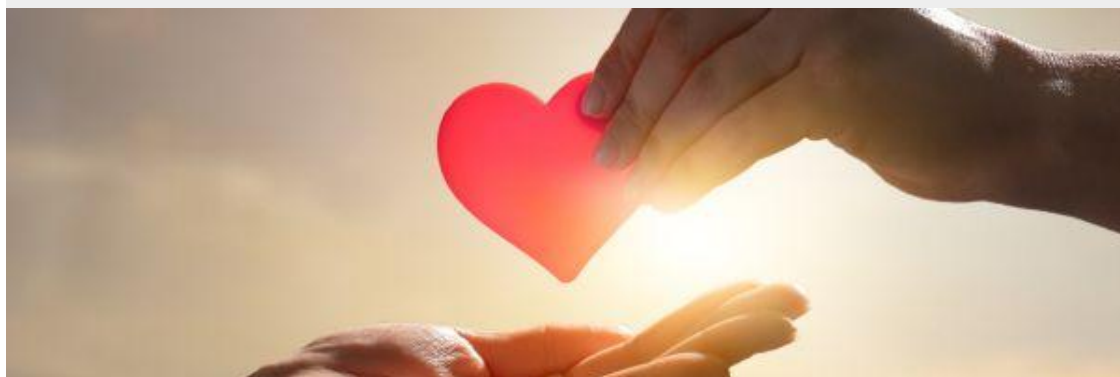


Searching for Middle & High School Sunday School Teachers

With Sunday school classes for our children and youth starting soon, we are in need of your gracious assistance. Starting in September, in addition to nursery care thru 5th grade classes, we will also be having a middle school (6th thru 8th grade) class and a high school (9th thru 12th grade) class on Sunday mornings. These classes will both meet twice a month to coincide with youth choir rehearsal.

Two individuals are requested for each class, curriculum will be selected, and you will be given a lesson plan/study guide for each Sunday, requiring a minimal amount of preparation; no experience necessary. Committing to doing a single Sunday is truly encouraged! We ask that you prayerfully consider being part of our wonderful Asbury youth's lives by sharing your kind spirit and joining other Asbury folks who have already volunteered.

We look forward to hearing from those who are interested in assisting our youth program. Please [email LaNor Smith](#) if you would like to volunteer and/or you have any questions.



Stretch Your Giving with Matching Gifts at LLNL

A great way to get more impact from your giving dollars is to take advantage of workplace charitable giving programs. In particular, if you work at Lawrence Livermore National Laboratory, the Lab has a generous matching program through its HOME campaign. Each fall, they invite pledging to charities through payroll deduction on a one time or ongoing basis, and are currently matching those donations at 40%. For instance, if you donate \$100 to Asbury through HOME, the Lab adds \$40 to Asbury on top of your donation. The donations are delivered on a quarterly basis. If you donate through HOME, make sure you identify Asbury as Asbury UMC, Livermore, since there are a lot of Asbury UMCs around the country.

In addition to the fall campaign, the Lab now has an “Open Match Giving Campaign” through HOME that can take directed donations via debit/credit at any time of year. Those are also matched at 40% up to \$400. Through August 31, they have a special enhanced version with 80% matching up to \$800.

Jim Hammer
Chair, Finance Committee

UPCOMING COMMUNITY EVENTS



Join Us for Community Service Day – Saturday, September 20

Asbury is invited to take part in this year's **Community Service Day** organized by **the City of Livermore**—a wonderful opportunity to serve our neighbors and strengthen community bonds. On **Saturday, September 20, from 8:00 a.m. to 1:00 p.m.**, volunteers from across Livermore will come together for hands-on projects that make a real difference.

Following the morning of service, all participants are invited to enjoy a **complimentary BBQ lunch** from 11:30 a.m. to 1:00 p.m. at Las Positas College—a time to gather, share a meal, and celebrate the day's accomplishments.

You can find a list of project sites here: [Community Service Day – September 2025](#)

If you'd like to participate, you may sign up individually, or we can register as an Asbury group. To coordinate as a group, please contact the [church office](#).

Let's come together to share our compassion and community spirit!

Have questions?

Contact the church office via [email](#) or phone, 925-447-1950.

Have an article, announcement, or event to submit?

Send them to the [Martina](#), our Office and Communications Manager, **by 3pm on Tuesdays**.

Want to donate online?

[Click here](#) or use Zelle (our ID is finance@asburylive.org)

Miss a newsletter or need to go back and re-read?

Check out the [newsletter archive](#)!

Would like to get in touch with a fellow Asburyite?

Contact the office.

Asbury United Methodist Church

4743 East Avenue | Livermore, CA 94550

EVENTS AT A GLANCE

RECURRING EVENTS

- **Sundays | 10am:** Asbury worship service

CHOIRS: not rehearsing during the summer (will resume in September)

OPEN SMALL GROUPS

- **1st and 3rd Tuesdays | 1:30pm:** Women of the Vine (Contact [Anne](#))
- **Wednesdays | 6-7:30pm:** Family Supper Club (Contact [Rachel](#))

- **2nd and 4th Wednesdays | 6-7pm:** Wednesday Zoom Group (Contact [Rita-Ann](#)) - this group does not meet in June
- **Thursdays | 7:45am:** Men's Bible Study on Zoom (Contact [Art](#))
- **Last Thursdays | 1pm:** Sew-In (Contact the [Office](#))
- **Saturdays | 8:30am:** B-MEN (Contact [Bob Berger](#))
- **Saturdays | 10am:** Craft and Chat (online - join [here](#))
- **4th Sundays | 11:30am:** Friends of Wadi Foquin Circle (Contact [Bob Johnson](#))



Asbury Office

Asbury United Methodist Church Of Livermore