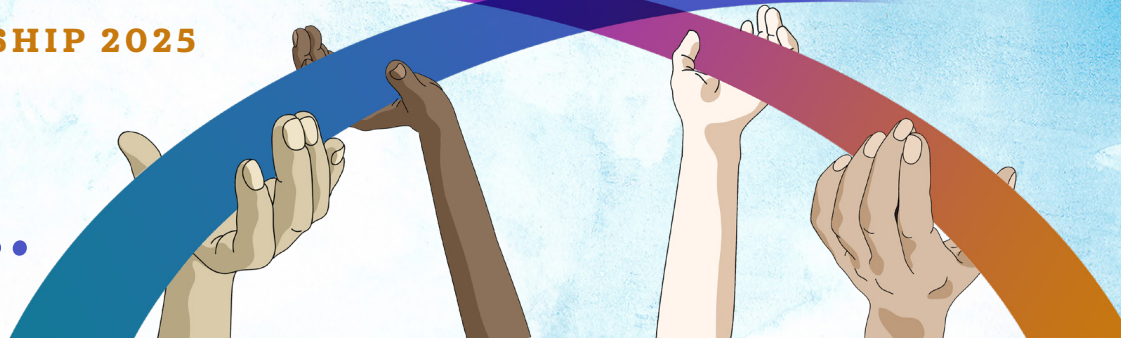


ASBURY STEWARDSHIP 2025

# Building Bridges...



...within Asbury, to the Community, and to the Future.

October 5, 2025

Dear Asbury Members and Friends,

Grace and peace to you in the name of Jesus Christ!

As autumn settles in, we enter a season that invites reflection, gratitude, and renewed commitment. It is Asbury's Stewardship season—a time when we pause to consider the blessings we've received, the unity we've built, and what we are called to continue to do, together, into the future.

Each fall, Asbury's Finance Committee starts planning the next year's finances. They build our budget for the upcoming year (2026) and form a Stewardship Committee to make our invitation to you to invest in Asbury, our community, and our future.

As in the past, **the key ingredient in our budget process is the information we receive from you, Asbury's members and friends.** A budget is just a guess without your input, which we look forward to in the form of **a pledge from you to Asbury**, letting the church know your financial support.

Pledges do so much more than paying salaries and bills. When you invest in our collective vision, your gifts support so much more, including:

- Children, youth and young adult programs and activities
- Low- or no-cost meeting space for non-profit organizations
- Sheet music for choirs and handbells
- Improvements to audio and visual systems to stream our services
- Sunday fellowship and brunches
- Contributions to UMCOR and many local charitable non-profit organizations

It takes intentional giving to be a meaningful community presence. Whether you consistently pledge, or are pledging for the first time, we invite you to consider tithing (donating 10% of your income). That may not be possible for some, but perhaps, with prayerful consideration, it can be a long-term goal. Asbury believes John Wesley's teaching, the "Give All You Can" approach!

We ask you to be in prayer and in conversation with your family concerning the financial gift that you make. **As last year, pledges can be submitted online or via a paper pledge card.** You can use the

Asbury website or the Asbury app to submit your pledge online. They go directly to the Financial secretary, Gail Bryan. Pledges can be changed at any time and are kept confidential.

At the right is a chart of past years’ pledge giving.  
**As you consider your pledge for 2026, we invite you to reflect on the bridges you’ve helped build—**and the ones still waiting to be formed. Every gift matters. Every act of generosity strengthens the path we walk together.

Thank you for being part of this journey. Thank you for your prayers, your presence, and your partnership. May this season of stewardship be one of joy, renewal, and bold vision.

YEARLY PLEDGES FOR	2023	2024	2025
\$100 - \$1,000	6	7	5
\$1,001 - \$3,000	24	32	33
\$3,001 - \$5,000	12	11	11
\$5,001 - \$10,000	14	15	15
\$10,001 - \$20,000	17	19	21
over \$20,000	3	2	3
TOTAL PLEDGES	76	86	88

With gratitude and hope,

David Gamble  
**STEWARDSHIP COMMITTEE CHAIR**

Ouk-Yean Kim Jueng  
**PASTOR**

Jean Braun, Tony Gnecco, Rebecca Kohlmoos, Jim Labao  
**COMMITTEE MEMBERS**

**FAITH.  
COMMUNITY.  
LOVE.**

4743 East Ave., Livermore, CA 94550  
(925) 447-1950 asburylive.org

