

Asbury Articles: December 3, 2025

UPCOMING ASBURY EVENTS



All Are Welcome - This Sunday!



The Christmas season is a time when the juxtaposition of the sacred and secular feels sometimes blatantly opposed, and sometimes quite blurred. The word “sacred” points to something dedicated as “holy” and “set apart.” This year, inspired by Dr. Marcia McFee’s Worship Design Studio, you are invited to a spiritual journey of seeing ALL things pregnant with the Holy. What could our experience of the Advent and Christmas season be like if we lived it imagining that everything is reflecting the sacred?

Upcoming Sermons:

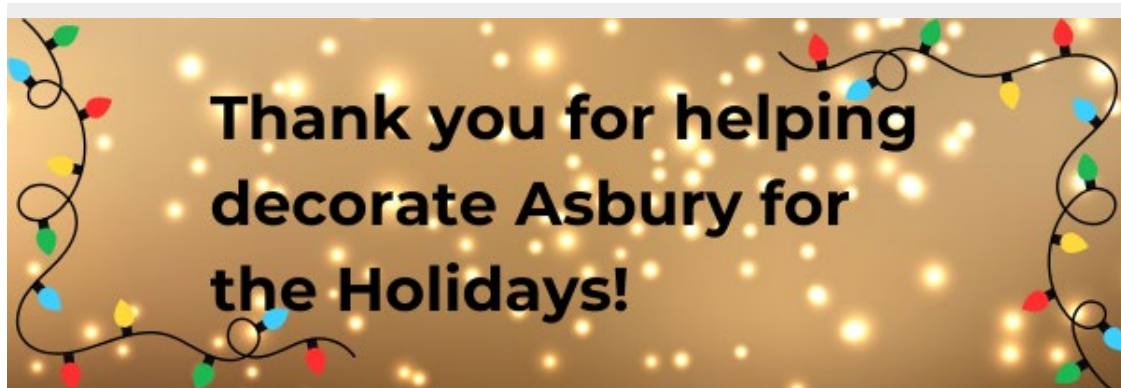
December 7: Sacred People (Love)

December 14: Sacred Space (Joy)

December 21: Sacred Knowing (Peace)

Christmas Eve: Sacred Being

December 28: On Earth Peace





🎄 Kids' Night Out Christmas Party! 🎄

Friday, December 6th from 5-8 PM

We NEED 1-2 more volunteers! Come do crafts and decorate cookies with the kids!



🎉 This Saturday - Join the Parade! 🎉

Asbury will be in Livermore's annual **Holiday Sights and Sounds Parade** again this year! 🌲 ✨

We need **six more people** to walk alongside our decorated truck 🚚 🎶 — **no experience necessary!**

📅 **Saturday, December 6**

🕒 **Starts at 6pm**

📍 **Downtown Livermore**

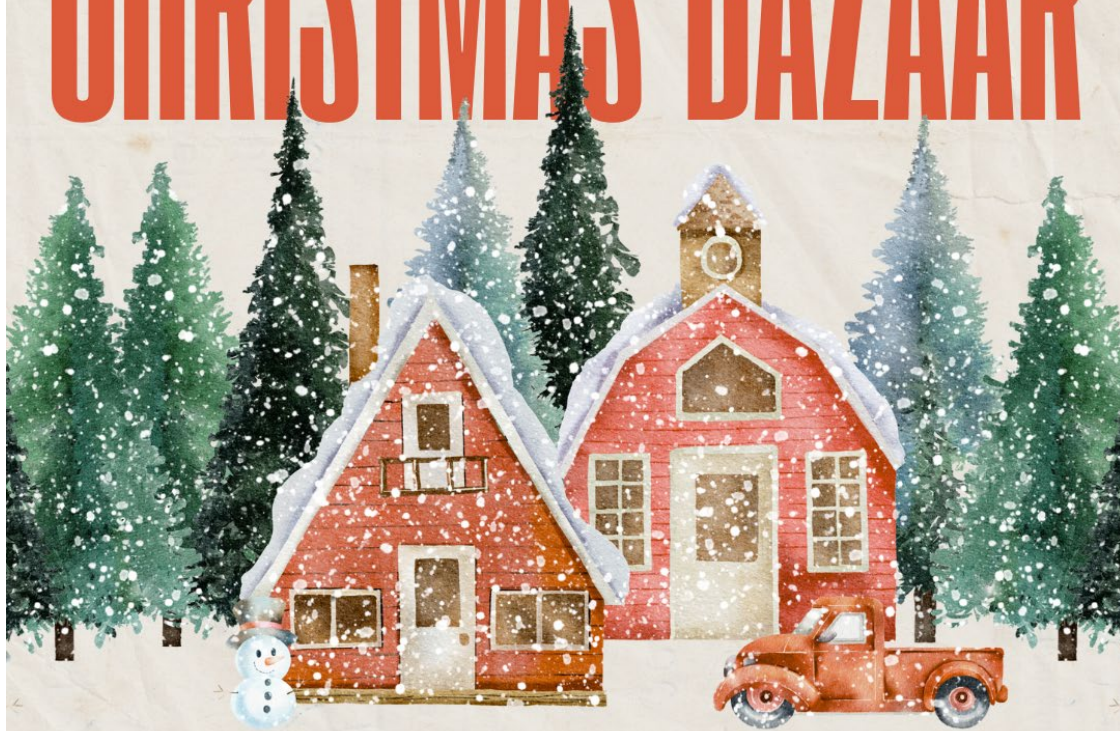
If you're interested or have questions, contact **Michele Rudd** 😊 📺

7 | 11 AM

DECEMBER

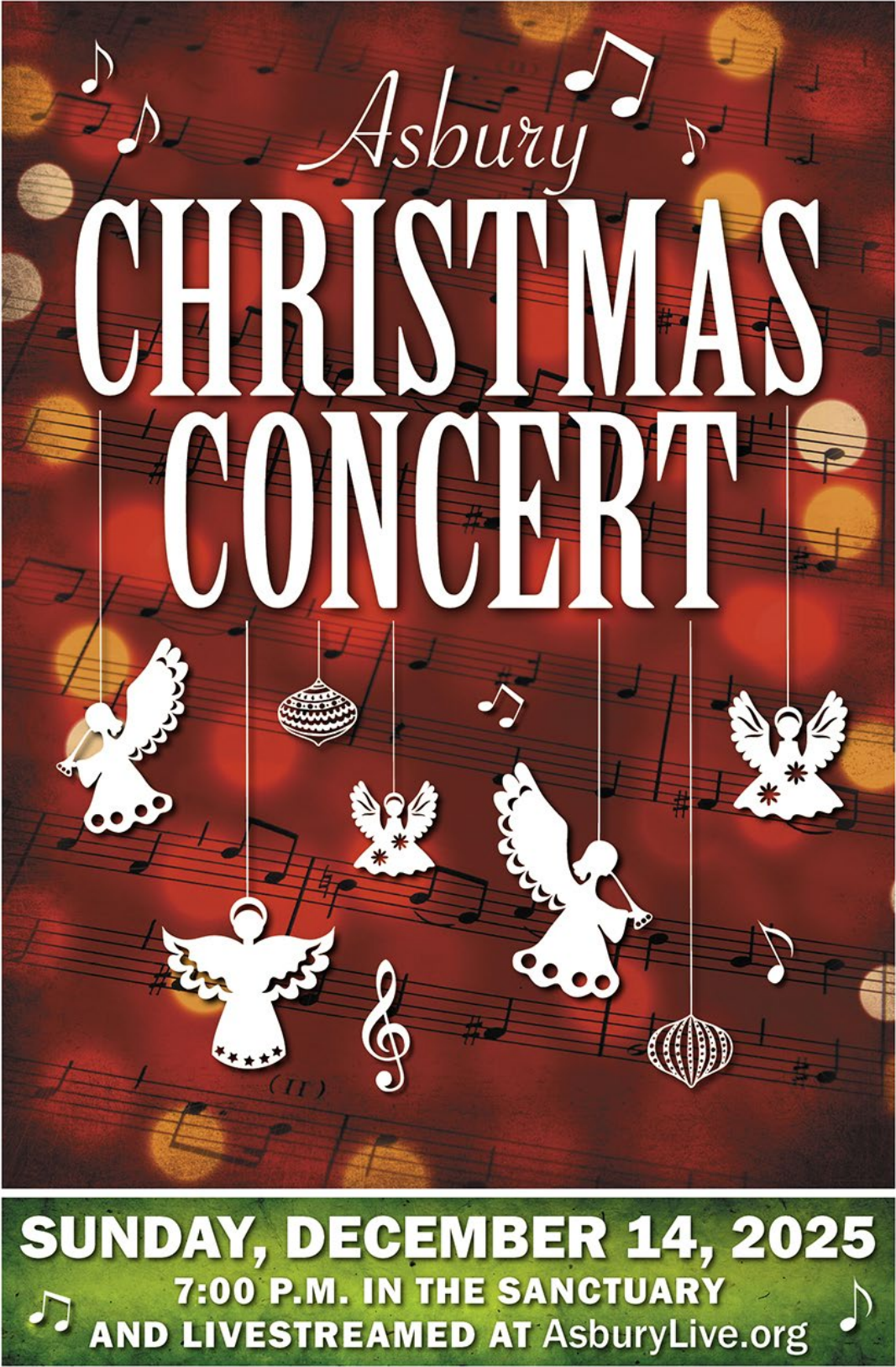
ASBURY UMC FELLOWSHIP HALL

CHRISTMAS BAZAAR



Asbury UMC, 4743 East Ave., Livermore, CA 94550 | asburylive.org

This Sunday - In Fellowship Hall!

The poster features a dark red background with a pattern of musical staves and notes. Several white angel cutouts and Christmas ornaments are suspended by thin white lines. The word 'Asbury' is written in a white script font at the top, followed by 'CHRISTMAS CONCERT' in large, bold, white capital letters.

Asbury CHRISTMAS CONCERT

SUNDAY, DECEMBER 14, 2025

**7:00 P.M. IN THE SANCTUARY
AND LIVESTREAMED AT AsburyLive.org**



🎁 Tri-Valley Haven Holiday Distribution at Asbury

📅 Friday, December 13

🕒 Distribution Time: 9:00 AM – 6:00 PM

✨ Volunteer Shifts:

- 8:30 AM – 12:00 PM
- 11:30 AM – 3:00 PM
- 2:30 PM – 6:00 PM

💛 Want to help?

Contact Natali at (925) 667-2711 or natali@trivalleyhaven.org

ANNOUNCEMENTS



✨ One More Middle School Teacher Needed – December 14! ✨

We're looking for **one more teacher** to help with our middle school class on **Saturday, December 14**. The lesson plan will be **fully prepared for you**, so all you need to do is show up and lead!

If you're interested or have any questions, please email **LaNor Smith** at lanorssmith@gmail.com.

Baby's arrival soon draws near,
help fill the freezer with love and cheer.

Fill the Freezer

BABY SHOWER

IN HONOR OF RACHEL OLSON

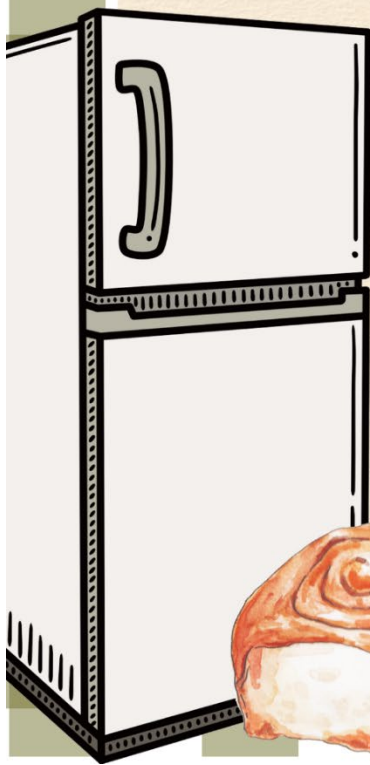
December 6th

Drop in anytime from

9am-12pm

for snacks, activities, and visiting

263 Soapstone Cmn.



📅 This Saturday 💖 Baby Olson Shower 📅

You're Invited to Help Fill the Freezer for Baby Olson!

Rachel Olson would like to extend an invite to you all-- Please feel welcomed to join.

Date: Saturday December 6th

Time: 9am-noon (drop in anytime)

Address: 263 Soapstone Cmn. Livermore

No RSVP Necessary

Join us at Rachel's house anytime between 9am-12 pm to celebrate new baby boy Olson. We will have activities, snacks, coffee/tea, and a chance to socialize.

In lieu of traditional baby registry gifts please consider bringing your families favorite freezer meal, restaurant gift card, casserole, breakfast dish, snacks, lunch items, desserts or cookie dough! Let's stock the freezer with lots of convenient nutritious food for postpartum!

Please include basic ingredients and reheat instructions. The Olson's have an extra empty freezer ready to fill up. NO allergies in the household.

Traditional Registry: <https://www.amazon.com/baby-reg/rachel-olson-january-2026-livermore/AGIX1MS8DXGK>

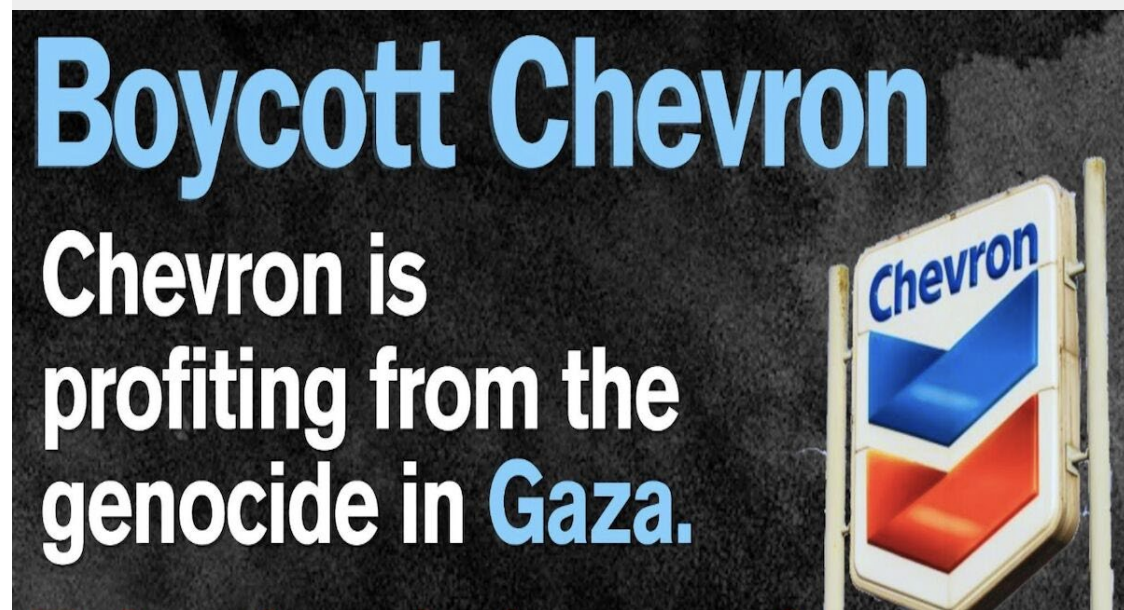


SSP 2026 Sign-up Information

The Asbury Intergenerational SSP Team has been assigned to serve **July 19-25, 2026 in Del Norte County**. Sign-up details can be found in the link [here](#).

If you are planning on going, please fill out the form in the link above and pay your deposit by **Friday, December 5th** so we can make sure that we have the approximate amount of participants registered and deposit amount paid to SSP.

If you have any questions about the trip, please feel free to contact [Tony Gnecco](#). (tgnecco@comcast.net)



The General Board of Church and Society Board of Directors has joined the call to boycott Chevron, reaffirming a commitment to human rights, peace, and international law, as articulated in the 2020/2024 United Methodist Social Principles and Book of Resolutions.

You can read more about it [here](#).



Eat me – drink me – would you??

After an event in Fellowship Hall, we often find food left out, either on tables in the hall or in the kitchen. Sometimes there is a note attached reading “help yourself” but often there is not. People assume that “somebody” will eat it; after all, they know where it came from, what it was purchased or made for, and how fresh it is. But anyone else coming into the kitchen knows none of these things. Ask yourself, would you eat food left lying around that you know nothing about?

Please do not leave food in the kitchen because “somebody” will use it. All food left in the kitchen should be labelled with the date it was left, who left it, and what event it is for. There are labels and tape in the drawer by the handwashing sink just for this purpose. If you do have leftovers that you plan to leave for another group to use, please make sure you have contacted that group, they know the food is there, and it is labelled!

As a follow on, **the refrigerator and freezer will be cleaned out the week of Dec 22.** All food past its expiration will be tossed. Any food that is not commonly used for Asbury events (salad dressings, condiments, syrup) will also be tossed unless it has an owner’s name on it.




 Food Is Needed 🤝

Tri-Valley Haven Food Pantry is working hard to support families in need this season, and resources are sparse. We can make a difference together! 💛

Bring donations to the church narthex on Sunday, or to the church office through **December 7th**. Every contribution, large or small, helps provide comfort and nourishment to neighbors in our community.

Consider donating the following types of foods:

-  **Proteins:** Canned meats (like tuna, chicken, and ham), vegetarian sources (like beans and lentils), and shelf-stable proteins.

- 🌾 **Grains:** Whole grains (like rice, pasta, and quinoa), brown rice, and whole wheat products.
- 🥕 **Canned Goods:** Canned soups, stews, and vegetables.
- 🧴 **Cooking Staples:** Oils, pasta sauces, salsas, and baking staples (like flour and sugar).
- 🍎 **Snacks:** Granola bars, dried fruits, nuts, and healthy snacks.



Men's Study Group

We are a men's small group that meets online every Thursday at 7:45 to 8:45 am. We have decided to wait until after Thanksgiving, until Thursday December 4, 2025, to start a new study.

This time, instead of studying the contents of the Bible, we will be learning the story of how the Bible came to be and how the way it is used and interpreted has evolved over the last 3,000 years. We will watch a 30-minute video each day (No homework!), followed by discussion.

We have mix of people, some who just want to listen that day, coupled with group members who make insightful comments and questions that day. We now have room for more participants, so we invite you to consider us.

Please contact Art Molvik to express interest in this course, or in something a little different. (We have studied Christianity from a variety of viewpoints and have changed our format and meeting time a few times.)

Art can be reached at (925) 989-9529 or at arthur.molvik@gmail.com.

Ladies Night Out

TUESDAY, DECEMBER 9TH | 5:30 PM

LANNA THAI RESTAURANT

(PLEASE NOTICE THE TIME CHANGE)
2270 LAS POSITAS ROAD, LIVERMORE, CA 94551

PLEASE RSVP TO KELLI WALTER (KELLIWALT@GMAIL.COM) BY FRIDAY, 12/5

THANK YOU FOR BRINGING CASH! WE HOPE YOU ARE ABLE TO JOIN US!



UPCOMING COMMUNITY EVENTS



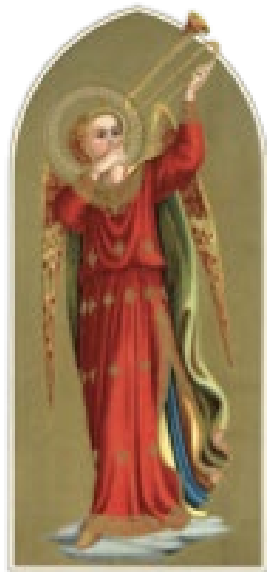
Presenting Fine Choral Music Since 1963
JOSEPH CASTRO, Music Director & Conductor

Need to brush up on your Messiah choruses?

Here's your chance.

Messiah Workshop

November 22, 2025, 10:00am - 1:00pm
Asbury United Methodist Church, Livermore



Sing-It-Yourself

Messiah

December 5, 2025, 7:30pm
Asbury United Methodist Church, Livermore

Tickets: *Messiah Workshop* \$10.00
Sing It Yourself Messiah \$15.00
Both Workshop & Sing It Yourself Messiah \$20.00
(When purchased together.)

This Friday!

All enthusiastic singers are invited to sing the Messiah with the Valley Concert Chorale on **Friday, December 5 at 7:30pm at Asbury United Methodist Church.**

Singers may bring their own copy of Handel's *Messiah*, or borrow one of ours.

Tickets for the annual singalong are \$15.

Tickets to the singalong are available online at valleyconcertchorale.org or by calling 925-866-4003.

A festive poster for a Christmas Free Market. The word "Christmas" is written in a red, cursive font with small white stars above it. Below it, "FREE MARKET" is in large, bold, black, serif capital letters. Underneath that, "December 6th" is in a red, sans-serif font. The text is flanked by two green holly leaves with red berries. Below the main text, it says "Enjoy refreshments, crafts, facepainting. We'll be offering coats, clothing, toys, food, essential supplies and more. This event will run as supplies last." in a black, sans-serif font.

Christmas
FREE MARKET
December 6th

Enjoy refreshments, crafts, facepainting.
We'll be offering coats, clothing, toys,
food, essential supplies and more.
This event will run as supplies last.

10AM TO NOON
8850 DAVONA DRIVE IN DUBLIN



cityservecares.org

🎁 Holiday Donations Needed! 🌲

We're gathering goodies to help make the season brighter for our neighbors, and we'd love your support!

We're currently looking for:

- 💎 Toys
- 💎 New or gently used clothing
- 💎 Non-perishable food items
- 💎 Christmas decorations (in good condition)

Last year over **800 people** came through — and each donation helped make someone's holiday a little lighter and a little brighter. ❤️

This is a wonderful way to share joy and support families and individuals in our community who could use some extra love this season.

Donations brought in will be taken to St. Philip Church in Dublin.

Have questions?

Contact the church office via [email](#) or phone, 925-447-1950.

Have an article, announcement, or event to submit?

Send them to the [Martina](#), our Office and Communications Manager, **by 3pm on Tuesdays**.

Want to donate online?

[Click here](#) or use Zelle (our ID is finance@asburylive.org)

Miss a newsletter or need to go back and re-read?

Check out the [newsletter archive](#)!

Would like to get in touch with a fellow Asburyite?

Contact the office.

Asbury United Methodist Church

4743 East Avenue | Livermore, CA 94550



RECURRING EVENTS

- **Sundays | 10am:** Asbury Worship Service

CHOIRS:

- **Tuesday | 7:00pm:** Asbury Ringers (Contact [Michèle](#))
- **Thursday | 7:30pm:** Faith Choir (Contact [Jean](#))
- **Sunday | 11:30am:** Cherub Choir (Contact [Makayla](#))
- **Sunday | 11:30am:** Rainbow Choir (Contact [Jean](#))
- **Sunday | 11:30am:** Youth Choir (Contact [Bailey](#))

OPEN SMALL GROUPS

- **1st and 3rd Tuesdays | 1:30pm:** Women of the Vine (Contact [Burlyne](#))
- **Wednesdays | 6-7:30pm:** Family Supper Club (Contact [Rachel](#))
- **2nd and 4th Wednesdays | 6-7pm:** Wednesday Zoom Group (Contact [Rita-Ann](#))
- **Thursdays | 7:45am:** Men's Bible Study on Zoom (Contact [Art](#))
- **Last Thursdays | 1pm:** Sew-In (Contact the [Office](#))
- **Saturdays | 8:30am:** B-MEN (Contact [Bob Berger](#))
- **Saturdays | 10am:** Craft and Chat (Online - Join [here](#))
- **4th Sundays | 11:30am:** Friends of Wadi Foquin Circle (Contact [Bob Johnson](#))



Asbury Office

Asbury United Methodist Church Of Livermore