

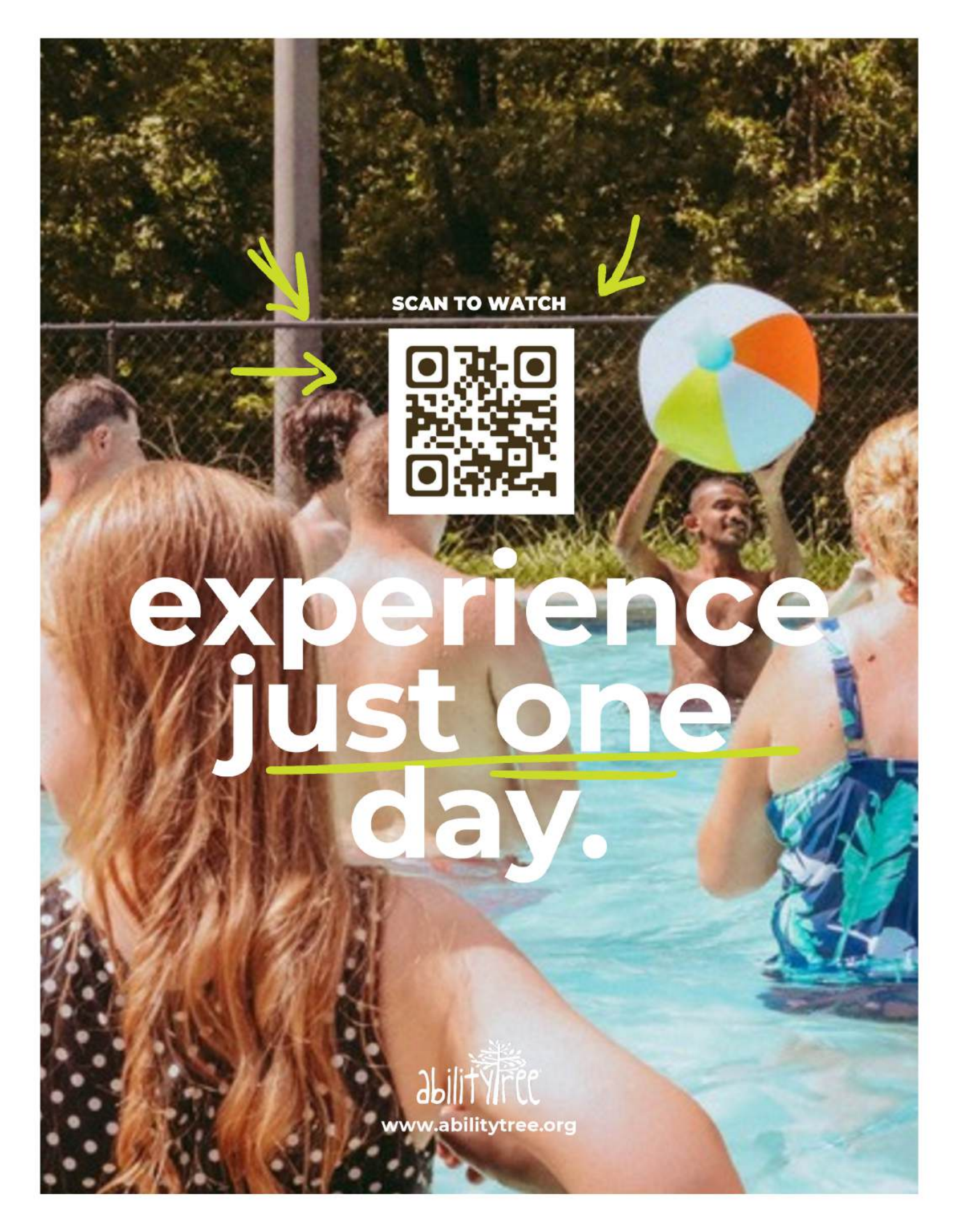


ability camp

A faith-based summer experience where adventure
and community is boundless.

abilitytree

www.abilitytree.org

The background of the entire image is a photograph of a swimming pool. In the foreground, the back of a person with long, wavy, reddish-brown hair is visible. They are wearing a dark-colored swimsuit with white polka dots. In the middle ground, a young man is standing in the pool, holding a large beach ball with segments of white, orange, green, and blue. To his right, another person is partially visible, wearing a blue and green patterned swimsuit. In the background, there is a chain-link fence and dense green trees. Overlaid on the image is a white square containing a QR code. Above the QR code, the text "SCAN TO WATCH" is written in black. Three yellow arrows point towards the QR code: one from the top left, one from the top right, and one from the left side.

SCAN TO WATCH

**experience
just one
day.**

abilitytree

www.abilitytree.org

what is ability camp??

Our mission at Ability Tree is to come alongside families impacted by disability by providing R.E.S.T. — Recreation, Education, Support, and Training. Ability Camp is just one way we do that! It's a faith-based sleep-away camp designed for adults with disabilities. Our hope is that camp offers a haven where individuals can experience joy, belonging, and spiritual growth. Campers build life-long friendships with peers and counselors, while experiencing the fun of activities like archery, rock climbing, horseback riding, swimming, art, and so much more.

locations

Currently, Ability Camp sites are rented in two states, with 3 available weeks for 105 total campers.

pennsylvania #1

Refreshing Mountain Retreat
& Adventure Center
455 Camp Rd
Stevens, PA 17578

oklahoma #2

New Life Ranch
5582 New Life Ranch Rd
Adair, OK 74330



www.abilitytree.org

for campers

Only 22% of people with disabilities participate in recreational activities, compared to 59% of people without disabilities. About 50% of individuals with disabilities participate in community activities less frequently than they'd like because of lack of accessibility and social stigma. Ability Camp provides them with a safe space to engage in recreation and community.



why it matters.

abilitytree

for caregivers

The role of a parent or caregiver is often 24/7 and for life. Over 50% of family caregivers of individuals with disabilities report high levels of stress and emotional strain.* Providing opportunities for respite is crucial for the well-being of the entire family.

*(*National Alliance for Caregiving)*

the reality is...

Research studies show respite can decrease stress levels, improve physical and mental well-being, strengthen family relationships, promote long-term care sustainability, and reduce the risk of burnout.



However, affordability, lack of options, and concerns about the quality of care make it challenging to access respite care.



Only 14% of caregivers report using respite care services.

Caregiving in the U.S. 2020 Report



www.abilitytree.org

A photograph of a man and a young boy high-fiving outdoors on a paved area. The man, on the right, has a red beard, wears a red baseball cap with 'CKS' on it, sunglasses, a teal t-shirt, and grey shorts. The boy, on the left, wears a teal t-shirt and grey shorts. Both are wearing blue Crocs. A yellow starburst graphic is positioned near the boy's arm. The background shows a building, trees, and a clear sky.

let's
change
that,
together.

together we can...

Purchase and develop a dedicated campground with specialized, accessible facilities. This campground would allow us to increase the number of camp weeks, campers, and counselors we could host per year.



Raise funding to allow for decreased costs for campers and counselors, and hire more staff.



Provide opportunities for even more families in the PA, NJ, and NY area and beyond to experience R.E.S.T.!



www.abilitytree.org



our vision for ability camp



www.abilitytree.org

ability campgrounds

About 15 years ago, Ability Tree hosted its first Ability Camp at Refreshing Mountain Retreat & Adventure Center in Stevens, PA. Since then, we've annually rented space both there and at New Life Ranch in Adair, Oklahoma. While our campers have cherished summers there, growth and accessibility constraints limit us on-site.

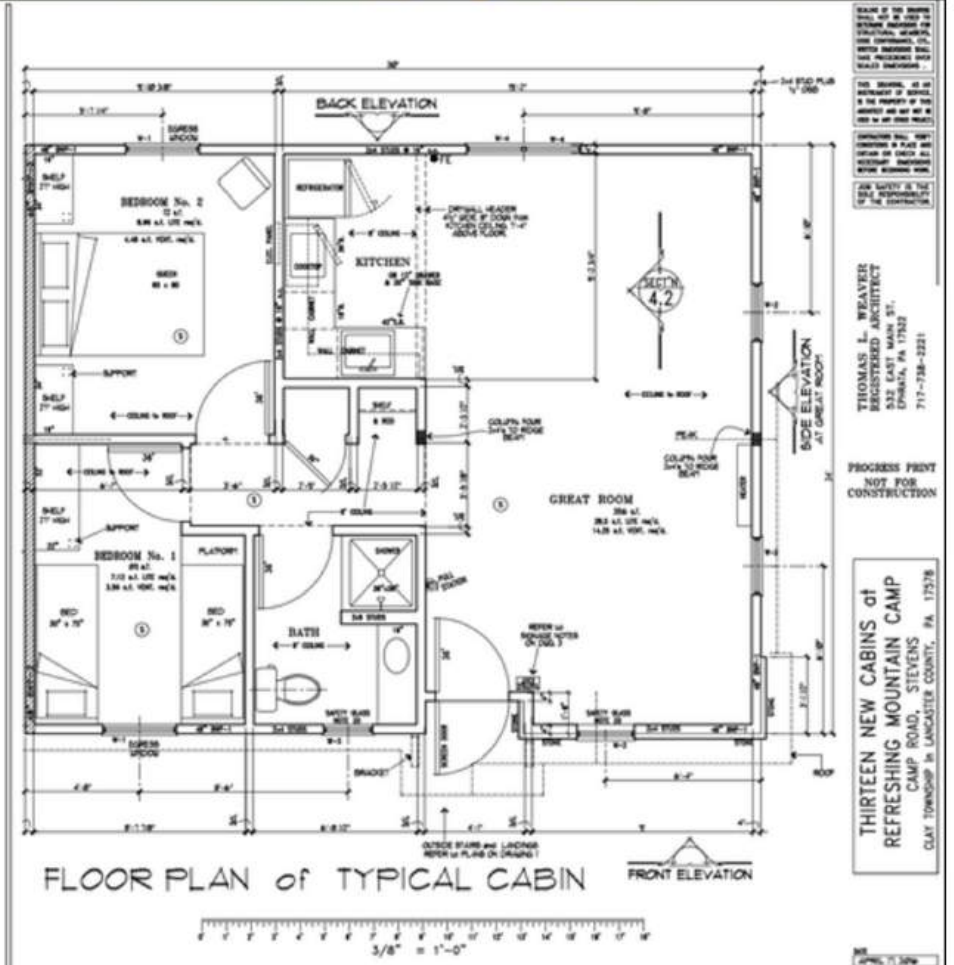
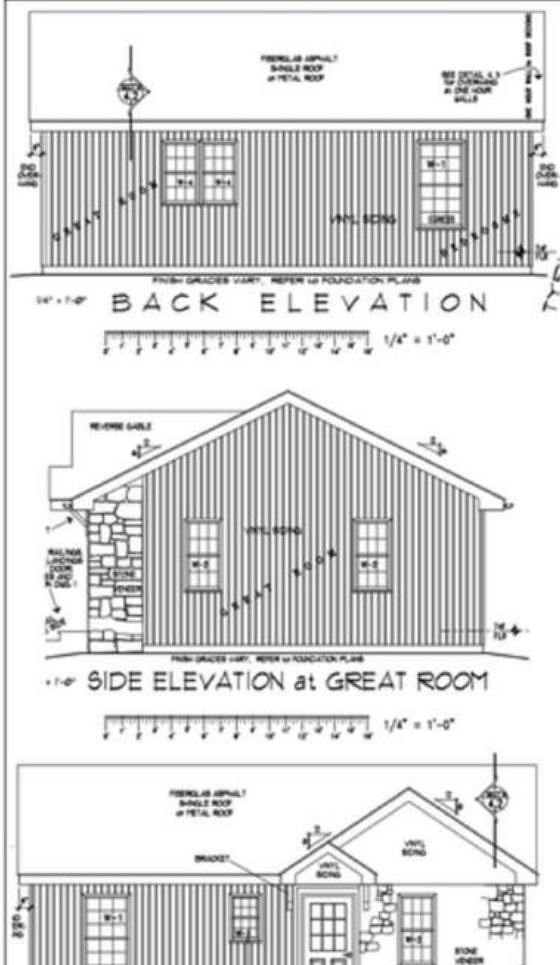
Our goal is to secure funding towards the purchase of land for accessible campgrounds. These grounds will serve Ability Camp, host retreats for impacted families, provide staff housing, and more!

camp facilities & amenities

- 25 guest cabins, with accessible hotel-style rooms
- Additional rooming for live-ins and rentals
- Main lodge with dining hall and staff offices
- Sports courts/fields and indoor gym
- Zero-entry pool and water play park
- Farmstead for sustainably-sourced food integration
- Art barn and multipurpose space
- Outdoor activities such as zip lining and rock climbing



www.abilitytree.org



A large wooden archway sign for Camp Acacia, constructed from logs and branches, spanning a dirt path. The sign features the text "Camp Acacia" in a stylized font. The background shows a wooded area with trees and a cloudy sky.

SCAN FOR LISTING



the site we have our eyes on.

- 20 min from Arkansas Branch
- 2 hrs from Headquarters
- Within 1 hr of 4 Cities

A photograph of a single-story building with a green metal roof and stone walls. A wooden sign on the building reads "Camp Acacia". The building has large windows and a covered entrance area. The surrounding area is green with trees and a paved path.

abilitytree

www.abilitytree.org



we need
your
help.

areas of need...

networking & awareness

Help us expand our reach by connecting us with potential partners, donors, and community champions. Your support in networking and raising awareness will ensure community is made possible for even more families impacted by disability in the tri-state area.



purchasing campgrounds

Partner with us by contributing financially toward the permanent purchase of campgrounds that will serve as a dedicated space for Ability Tree camps, family retreats, and year-round programming.



operations funding

Support the ongoing operation of Ability Camp by funding staffing, equipment, campers, and activities. Your donation ensures we continue providing life-changing experiences for adults with disabilities.



www.abilitytree.org



get in touch

email

joebutler@abilitytree.org, jenbutler@abilitytree.org

phone

(855) 288 - 6735 ext. 702

website

www.abilitytree.org

address

P.O. Box 881538, Port St. Lucie, FL 34988

social media

@abilitytree on Facebook & Instagram



SCAN TO DONATE



thank you
for making
ability camp
possible!



www.abilitytree.org