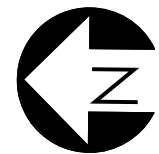


1 FLOOR PLAN - BASEMENT

0' 2' 4' 8' 16' 24' 1/8" = 1'-0"



GENERAL PLAN NOTES:

- GENERAL NOTES APPLY TO ALL DRAWINGS.
- CONTRACTORS SHALL VERIFY ALL DIMENSIONS AND CONDITIONS ON THE DRAWINGS AND ON THE JOB SITE PRIOR TO EXECUTION OF ANY WORK, AND SHALL NOTIFY THE ARCHITECT OF ANY DISCREPANCY. CONTRACTOR SHALL BE RESPONSIBLE FOR ALL COSTS INCURRED DUE TO HIS FAILURE TO DO SO.
- WHERE THE INTENT OF THE DRAWINGS IS IN DOUBT, OR WHERE THERE APPEARS TO BE AN ERROR ON THE DRAWINGS, OR WHERE THERE IS A DISCREPANCY BETWEEN THE DRAWINGS AND THE FIELD, THE ARCHITECT (AND ENGINEER WHERE APPLICABLE) SHALL BE NOTIFIED AS SOON AS REASONABLY POSSIBLE FOR THE PROCEDURE TO FOLLOW. DO NOT SCALE THE DRAWINGS.
- ALL REVISIONS MUST BE APPROVED IN WRITING BY BOTH THE OWNER AND THE ARCHITECT PRIOR TO THE CONSTRUCTION OF ANY DEVIATION IN THE SCOPE OF WORK.
- DIMENSIONS ARE TO FACE OF FRAMING, OR FACE OF CONCRETE, U.N.O. DIMENSIONS STATED AS CLEAR ARE FROM FACE OF FINISH TO FACE OF FINISH.
- ALL DOORS ARE TO BE 3" FROM FACE OF FRAMING TO ROUGH OPENING, U.N.O. ALL OPENINGS ARE DIMENSIONED FROM FACE OF FRAMING TO CENTER OF OPENING.
- SEE STRUCTURAL DRAWINGS FOR SHEAR WALL LOCATIONS. WHERE NON-SHEAR WALLS ARE IN THE SAME PLANE, CONTINUE SHEATHING LAYER TO NEAREST CORNER TO ENSURE CONTINUITY.
- WALL MATERIAL MAY CHANGE AT WALL INTERSECTIONS, REVIEW SECTIONS AND ELEVATIONS FOR ADDED INFORMATION.
- PROVIDE FIRE BLOCKING IN CONCEALED SPACES OF WALLS, PARTITIONS AND FURRED SPACES AT 10'-0" O.C. IN ALL DIRECTIONS AND AT ALL INTERCONNECTIONS BETWEEN CONCEALED VERTICAL AND HORIZONTAL SPACES.
- ADDITIONAL FRAMING, BLOCKING AND FINISHES SHALL BE PROVIDED AS REQUIRED FOR PLUMBING ACCESS.
- ALL MATERIALS AND WORKMANSHIP SHALL CONFORM WITH ALL STATE AND LOCAL JURISDICTIONS AND REGULATIONS.
- WHERE WALLS WITH DIFFERING LAYERS OF GYP ARE IN THE SAME PLANE, ADD ADDITIONAL LAYERS OF GYP TO ENSURE A CONTINUOUS FINISH SURFACE. CONTINUE ADDITIONAL LAYERS TO NEAREST CORNER.
- AT ALL BATH AND TOILET ROOMS, AS WELL AS ALL WET WALLS IN KITCHENS, PROVIDE WATER RESISTANT GYPSUM BOARDS AS FACE LAYER ON ALL ADJACENT GYPSUM BOARD WALL AND CEILING ASSEMBLIES.
- REFER TO CODE REVIEW SHEETS FOR FIRE RATING. REFER TO WALL TYPE SHEETS FOR CONSTRUCTION OF WALLS AND FLOORS IN RATED CONDITIONS.
- PROVIDE UL APPROVED THROUGH PENETRATION AND MEMBRANE PENETRATION FIRESTOP SYSTEMS AS REQUIRED BY CODE AT ALL ELECT., PLUM., AND MECH. PENETRATIONS IN FIRE RATED ASSEMBLIES.
- SEE ENLARGED FLOOR PLANS FOR DIMENSIONS AND WALL TAGS NOT SHOWN.

FLOOR PLAN KEYNOTES:

- | | |
|------------------------------------------------------------------------------------------------|---------------------------------------------------------------------------------------------------------------------------------------------------------|
| 1 SEMI RECESSED FIRE EXTINGUISHER. | 12 STACKED WASHER AND DRYER |
| 2 SHORT-TERM BIKE PARKING WITH GROUND MOUNTED U-RACKS. SEE DETAIL 1/A1.06 | 13 2'-0" X 2'-0" MOP SINK, PROVIDE 4'-0" HIGH FRP ON ADJACENT WALLS. ROUTE TO GREASE TRAP |
| 3 ELECTRIC FIRE PLACE | 14 FLOOR DRAIN |
| 4 SINGLE BASIN KITCHEN SINK, OFCI | 15 TRENCH DRAIN, ROUTE TO GREASE TRAP |
| 5 3'-0" HIGH COUNTER TOP | 16 10'-0" HIGH PANEL FOLD DOOR |
| 6 UNDER COUNTER DISHWASHER, OFCI | 17 RECESSED ENTRANCE MAT |
| 7 DRY RACK, OFCI | 18 5% OF LOCKERS WITHIN EACH CLUSTER NEED TO BE ACCESSIBLE, SEE INTERIOR ELEVATIONS FOR LOCATION AND ADDITIONAL REQUIREMENTS FOR ADA COMPLIANT LOCKERS. |
| 8 HAND SINK | 19 COUNTERTOP MICROWAVE |
| 9 FLOOR SINK UNDER SINK, ROUTE TO GREASE TRAP | 20 42" X 8' MODULAR COLD STORAGE PANELS, BASIS OF DESIGN: BARR REFRIGERATION |
| 10 COMMERCIAL KITCHEN GRADE GAS RANGE, PROVIDE 4'-0" x 8'-0" TYPE I HOOD ABOVE FOR VENTILATION | |
| 11 4'-0" x 10'-0" COMMERCIAL FOOD PREP TABLE | |

FOR PLAN
REVIEW ONLY

IN THE EVENT CONFLICTS ARE DISCOVERED BETWEEN THE ORIGINAL SIGNED AND SEALED DOCUMENTS PREPARED BY THE ARCHITECTS AND/OR THEIR CONSULTANTS, AND ANY COPY OF THE DOCUMENTS TRANSMITTED BY MAIL, FAX, ELECTRONICALLY OR OTHERWISE, THE ORIGINAL SIGNED AND SEALED DOCUMENTS SHALL GOVERN.

PROJECT # 2019-055
DATE: 05/05/2022

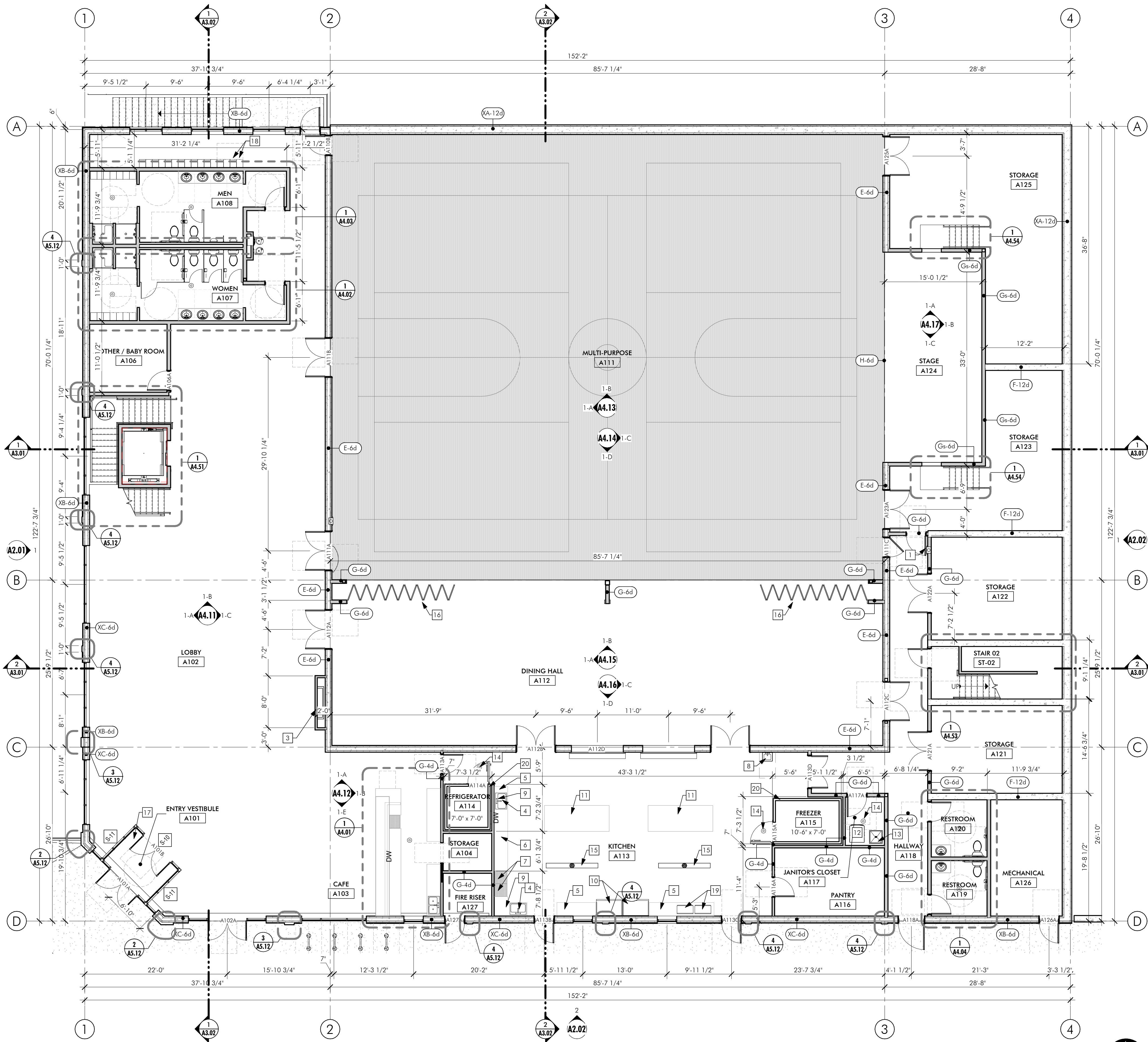
REVISIONS
2 11/11/22 PERMIT COMMENTS

MULTI-PURPOSE BUILDING
FIRST SLAVIC BAPTIST
1736 DAVIS ROAD, SALEM OR

SHEET:

A1.20

BASEMENT - FLOOR
PLAN



1 FLOOR PLAN - LEVEL 01

GENERAL PLAN NOTES:

- GENERAL NOTES APPLY TO ALL DRAWINGS.
- CONTRACTORS SHALL VERIFY ALL DIMENSIONS AND CONDITIONS ON THE DRAWINGS AND ON THE JOB SITE PRIOR TO EXECUTION OF ANY WORK, AND SHALL NOTIFY THE ARCHITECT OF ANY DISCREPANCY. CONTRACTOR SHALL BE RESPONSIBLE FOR ALL COSTS INCURRED DUE TO HIS FAILURE TO DO SO.
- WHERE THE INTENT OF THE DRAWINGS IS IN DOUBT, OR WHERE THERE APPEARS TO BE AN ERROR ON THE DRAWINGS, OR WHERE THERE IS A DISCREPANCY BETWEEN THE DRAWINGS AND THE FIELD, THE ARCHITECT (AND ENGINEER WHERE APPLICABLE) SHALL BE NOTIFIED AS SOON AS REASONABLY POSSIBLE FOR THE PROCEDURE TO FOLLOW. DO NOT SCALE THE DRAWINGS.
- ALL REVISIONS MUST BE APPROVED IN WRITING BY BOTH THE OWNER AND THE ARCHITECT PRIOR TO THE CONSTRUCTION OF ANY DEVIATION IN THE SCOPE OF WORK.
- DIMENSIONS ARE TO FACE OF FRAMING, OR FACE OF CONCRETE, U.N.O. DIMENSIONS STATED AS CLEAR ARE FROM FACE OF FINISH TO FACE OF FINISH.
- ALL DOORS ARE TO BE 3" FROM FACE OF FRAMING TO ROUGH OPENING, U.N.O. ALL OPENINGS ARE DIMENSIONED FROM FACE OF FRAMING TO CENTER OF OPENING.
- SEE STRUCTURAL DRAWINGS FOR SHEAR WALL LOCATIONS. WHERE NON-SHEAR WALLS ARE IN THE SAME PLANE, CONTINUE SHEATHING LAYER TO NEAREST CORNER TO ENSURE CONTINUITY.
- WALL MATERIAL MAY CHANGE AT WALL INTERSECTIONS, REVIEW SECTIONS AND ELEVATIONS FOR ADDED INFORMATION.
- PROVIDE FIRE BLOCKING IN CONCEALED SPACES OF WALLS, PARTITIONS AND FURRED SPACES AT 10'-0" O.C. IN ALL DIRECTIONS AND AT ALL INTERCONNECTIONS BETWEEN CONCEALED VERTICAL AND HORIZONTAL SPACES.
- ADDITIONAL FRAMING, BLOCKING AND FINISHES SHALL BE PROVIDED AS REQUIRED FOR PLUMBING ACCESS.
- ALL MATERIALS AND WORKMANSHIP SHALL CONFORM WITH ALL STATE AND LOCAL JURISDICTIONS AND REGULATIONS.
- WHERE WALLS WITH DIFFERING LAYERS OF GYP ARE IN THE SAME PLANE, ADD ADDITIONAL LAYERS OF GYP TO ENSURE A CONTINUOUS FINISH SURFACE. CONTINUE ADDITIONAL LAYERS TO NEAREST CORNER.
- AT ALL BATH AND TOILET ROOMS, AS WELL AS ALL WET WALLS IN KITCHENS, PROVIDE WATER RESISTANT GYPSUM BOARDS AS FACE LAYER ON ALL ADJACENT GYPSUM BOARD WALL AND CEILING ASSEMBLIES.
- REFER TO CODE REVIEW SHEETS FOR FIRE RATING. REFER TO WALL TYPE SHEETS FOR CONSTRUCTION OF WALLS AND FLOORS IN RATED CONDITIONS.
- PROVIDE UL APPROVED THROUGH PENETRATION AND MEMBRANE PENETRATION FIRESTOP SYSTEMS AS REQUIRED BY CODE AT ALL ELECT., PLUM., AND MECH. PENETRATIONS IN FIRE RATED ASSEMBLIES.
- SEE ENLARGED FLOOR PLANS FOR DIMENSIONS AND WALL TAGS NOT SHOWN.

FLOOR PLAN KEYNOTES:

- | | |
|------------------------------------------------------------------------------------------------|---------------------------------------------------------------------------------------------------------------------------------------------------------|
| 1 SEMI RECESSED FIRE EXTINGUISHER. | 12 STACKED WASHER AND DRYER |
| 2 SHORT-TERM BIKE PARKING WITH GROUND MOUNTED U-RACKS. SEE DETAIL 1/ A1.06 | 13 2'-0" X 2'-0" MOP SINK, PROVIDE 4'-0" HIGH FRP ON ADJACENT WALLS. ROUTE TO GREASE TRAP |
| 3 ELECTRIC FIRE PLACE | 14 FLOOR DRAIN |
| 4 SINGLE BASIN KITCHEN SINK, OFCI | 15 TRENCH DRAIN, ROUTE TO GREASE TRAP |
| 5 3'-0" HIGH COUNTER TOP | 16 10'-0" HIGH PANEL FOLD DOOR |
| 6 UNDER COUNTER DISHWASHER, OFCI | 17 RECESSED ENTRANCE MAT |
| 7 DRY RACK, OFCI | 18 5% OF LOCKERS WITHIN EACH CLUSTER NEED TO BE ACCESSIBLE, SEE INTERIOR ELEVATIONS FOR LOCATION AND ADDITIONAL REQUIREMENTS FOR ADA COMPLIANT LOCKERS. |
| 8 HAND SINK | 19 COUNTERTOP MICROWAVE |
| 9 FLOOR SINK UNDER SINK, ROUTE TO GREASE TRAP | 20 42" X 8' MODULAR COLD STORAGE PANELS, BASIS OF DESIGN: BARR REFRIGERATION |
| 10 COMMERCIAL KITCHEN GRADE GAS RANGE, PROVIDE 4'-0" X 8'-0" TYPE I HOOD ABOVE FOR VENTILATION | |
| 11 4'-0" X 10'-0" COMMERCIAL FOOD PREP TABLE | |

FOR PLAN
REVIEW ONLYIN THE EVENT CONFLICTS ARE DISCOVERED
BETWEEN THE ORIGINAL SIGNED AND SEALED
DOCUMENTS PREPARED BY THE ARCHITECTS
AND/OR THEIR CONSULTANTS, AND ANY COPY OF
THE DOCUMENTS TRANSMITTED BY MAIL, FAX,
ELECTRONICALLY OR OTHERWISE, THE ORIGINAL
SIGNED AND SEALED DOCUMENTS SHALL GOVERN.PROJECT # 2019-055
DATE: 05/05/2022REVISIONS
1 08/16/22 OWNER REVISIONS
2 11/11/22 PERMIT COMMENTSMULTI-PURPOSE BUILDING
FIRST SLAVIC BAPTIST
1736 DAVIS ROAD, SALEM OR

SHEET:

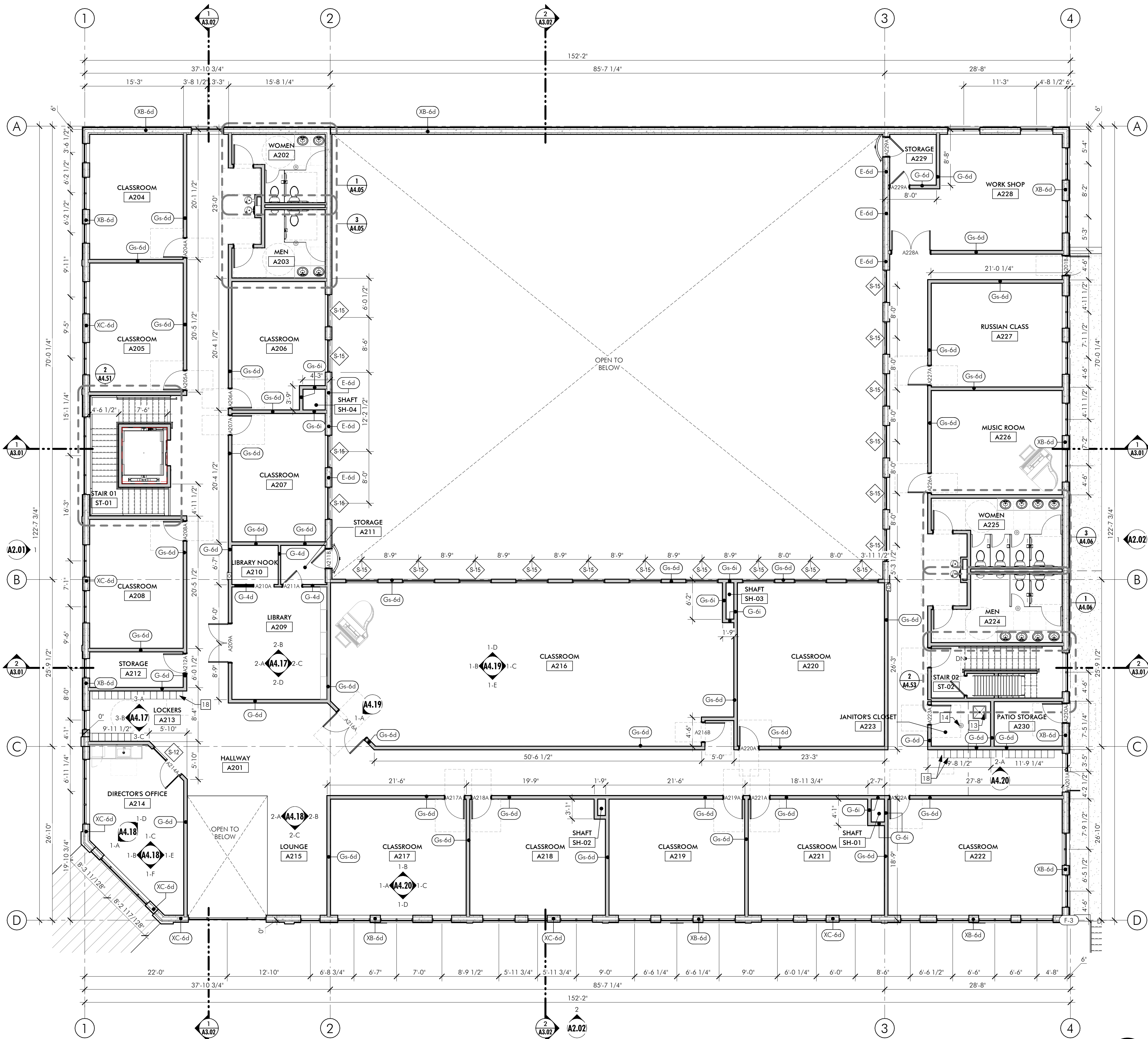
A1.22LEVEL 02 - FLOOR
PLAN

GENERAL PLAN NOTES:

- GENERAL NOTES APPLY TO ALL DRAWINGS.
- CONTRACTORS SHALL VERIFY ALL DIMENSIONS AND CONDITIONS ON THE DRAWINGS AND ON THE JOB SITE PRIOR TO EXECUTION OF ANY WORK, AND SHALL NOTIFY THE ARCHITECT OF ANY DISCREPANCY. CONTRACTOR SHALL BE RESPONSIBLE FOR ALL COSTS INCURRED DUE TO HIS FAILURE TO DO SO.
- WHERE THE INTENT OF THE DRAWINGS IS IN DOUBT, OR WHERE THERE APPEARS TO BE AN ERROR ON THE DRAWINGS, OR WHERE THERE IS A DISCREPANCY BETWEEN THE DRAWINGS AND THE FIELD, THE ARCHITECT (AND ENGINEER WHERE APPLICABLE) SHALL BE NOTIFIED AS SOON AS REASONABLY POSSIBLE FOR THE PROCEDURE TO FOLLOW. DO NOT SCALE THE DRAWINGS.
- ALL REVISIONS MUST BE APPROVED IN WRITING BY BOTH THE OWNER AND THE ARCHITECT PRIOR TO THE CONSTRUCTION OF ANY DEVIATION IN THE SCOPE OF WORK.
- DIMENSIONS ARE TO FACE OF FRAMING, OR FACE OF CONCRETE, U.N.O. DIMENSIONS STATED AS CLEAR ARE FROM FACE OF FINISH TO FACE OF FINISH.
- ALL DOORS ARE TO BE 3" FROM FACE OF FRAMING TO ROUGH OPENINGS, U.N.O. ALL OPENINGS ARE DIMENSIONED FROM FACE OF FRAMING TO CENTER OF OPENING.
- SEE STRUCTURAL DRAWINGS FOR SHEAR WALL LOCATIONS. WHERE NON-SHEAR WALLS ARE IN THE SAME PLANE, CONTINUE SHEATHING LAYER TO NEAREST CORNER TO ENSURE CONTINUITY.
- WALL MATERIAL MAY CHANGE AT WALL INTERSECTIONS, REVIEW SECTIONS AND ELEVATIONS FOR ADDED INFORMATION.
- PROVIDE FIRE BLOCKING IN CONCEALED SPACES OF WALLS, PARTITIONS AND FURRED SPACES AT 10'-0" O.C. IN ALL DIRECTIONS AND AT ALL INTERCONNECTIONS BETWEEN CONCEALED VERTICAL AND HORIZONTAL SPACES.
- ADDITIONAL FRAMING, BLOCKING AND FINISHES SHALL BE PROVIDED AS REQUIRED FOR PLUMBING ACCESS.
- ALL MATERIALS AND WORKMANSHIP SHALL CONFORM WITH ALL STATE AND LOCAL JURISDICTIONS AND REGULATIONS.
- WHERE WALLS WITH DIFFERING LAYERS OF GYP ARE IN THE SAME PLANE, ADD ADDITIONAL LAYERS OF GYP TO ENSURE A CONTINUOUS FINISH SURFACE. CONTINUE ADDITIONAL LAYERS TO NEAREST CORNER.
- AT ALL BATH AND TOILET ROOMS, AS WELL AS ALL WET WALLS IN KITCHENS, PROVIDE WATER RESISTANT GYPSUM BOARDS AS FACE LAYER ON ALL ADJACENT GYPSUM BOARD WALL AND CEILING ASSEMBLIES.
- REFER TO CODE REVIEW SHEETS FOR FIRE RATING. REFER TO WALL TYPE SHEETS FOR CONSTRUCTION OF WALLS AND FLOORS IN RATED CONDITIONS.
- PROVIDE UL APPROVED THROUGH PENETRATION AND MEMBRANE PENETRATION FIRESTOP SYSTEMS AS REQUIRED BY CODE AT ALL ELECT., PLUM., AND MECH. PENETRATIONS IN FIRE RATED ASSEMBLIES.
- SEE ENLARGED FLOOR PLANS FOR DIMENSIONS AND WALL TAGS NOT SHOWN.

FLOOR PLAN KEYNOTES:

- | | |
|------------------------------------------------------------------------------------------------|---------------------------------------------------------------------------------------------------------------------------------------------------------|
| 1 SEMI RECESSED FIRE EXTINGUISHER. | 12 STACKED WASHER AND DRYER |
| 2 SHORT-TERM BIKE PARKING WITH GROUND MOUNTED U-RACKS. SEE DETAIL 1/ A1.06 | 13 2'-0" X 2'-0" MOP SINK, PROVIDE 4'-0" HIGH FRP ON ADJACENT WALLS. ROUTE TO GREASE TRAP |
| 3 ELECTRIC FIRE PLACE | 14 FLOOR DRAIN |
| 4 SINGLE BASIN KITCHEN SINK, OFCI | 15 TRENCH DRAIN, ROUTE TO GREASE TRAP |
| 5 3'-0" HIGH COUNTER TOP | 16 10'-0" HIGH PANEL FOLD DOOR |
| 6 UNDER COUNTER DISHWASHER, OFCI | 17 RECESSED ENTRANCE MAT |
| 7 DRY RACK, OFCI | 18 5% OF LOCKERS WITHIN EACH CLUSTER NEED TO BE ACCESSIBLE, SEE INTERIOR ELEVATIONS FOR LOCATION AND ADDITIONAL REQUIREMENTS FOR ADA COMPLIANT LOCKERS. |
| 8 HAND SINK | 19 COUNTERTOP MICROWAVE |
| 9 FLOOR SINK UNDER SINK, ROUTE TO GREASE TRAP | 20 42" X 8" MODULAR COLD STORAGE PANELS, BASIS OF DESIGN: BARR REFRIGERATION |
| 10 COMMERCIAL KITCHEN GRADE GAS RANGE, PROVIDE 4'-0" X 8'-0" TYPE I HOOD ABOVE FOR VENTILATION | |
| 11 4'-0" X 10'-0" COMMERCIAL FOOD PREP TABLE | |



1 FLOOR PLAN - LEVEL 02