



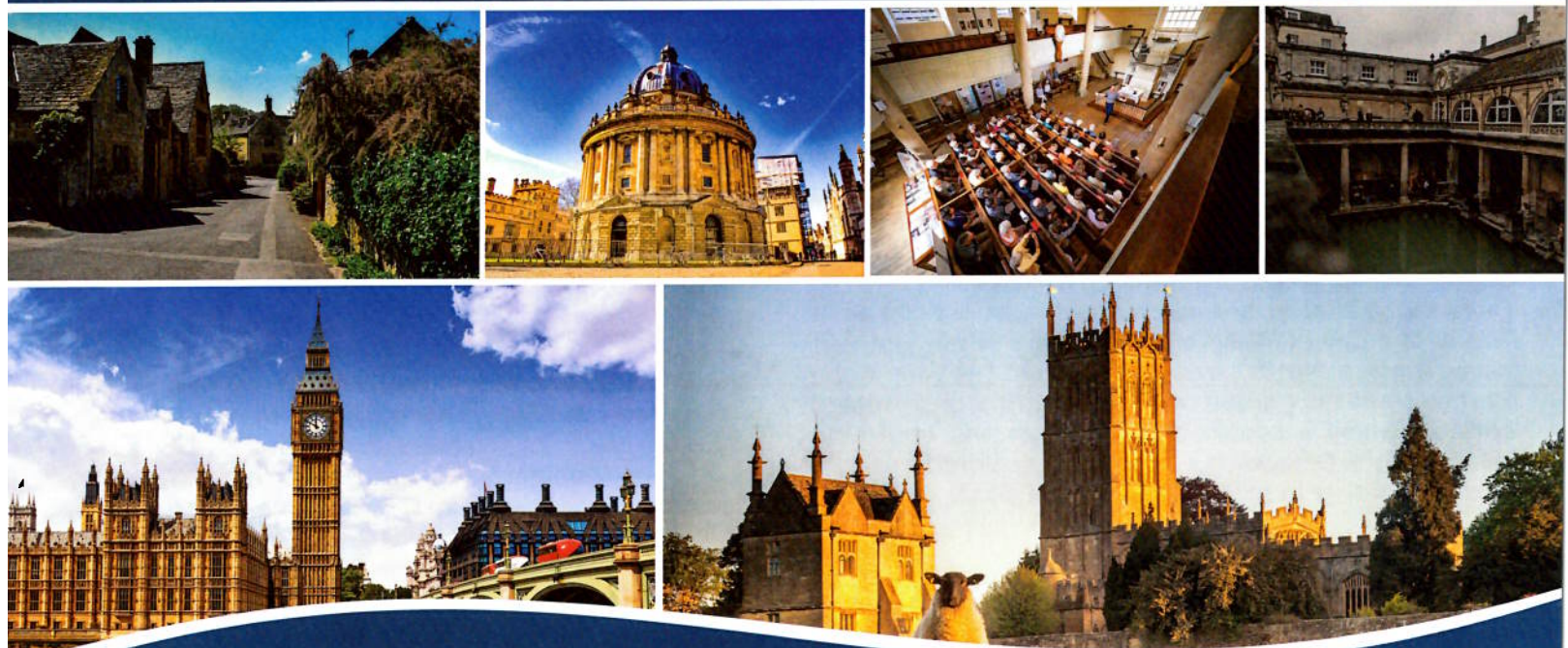
www.EO.travel/mytrip Tour = HE25 Date = 090925 Code = G ID = 46938



Join Florida Conference of the Global Methodist Church  
with Rev. Theodore "Ted" & Alicia Wood

# WESLEY HERITAGE TOUR

September 9 - 18, 2025

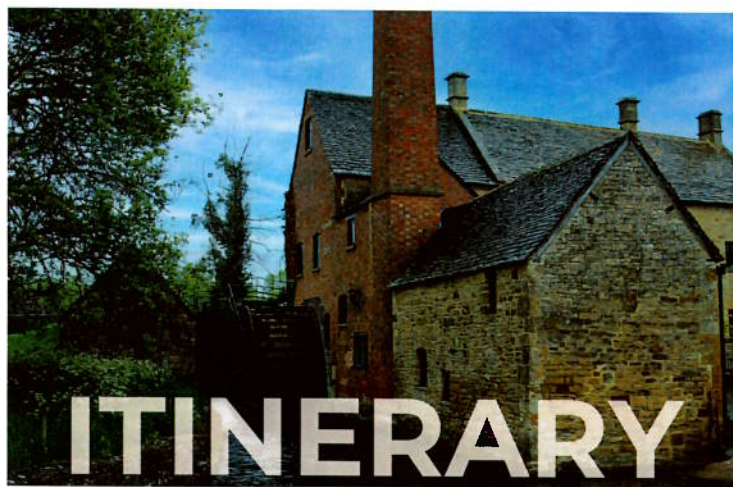


**EO**   
Educational Opportunities Tours

www.EO.travel  
800-247-0017

Scan to  
Travel with Us!





### **September 9 – Depart from the USA**

Your Wesley Heritage travel study program begins as you depart the United States on your international flight to England.

### **September 10 – Arrival in England and Coventry Visit**

Arrive in London this morning. Pass through the English countryside to the city of Coventry. On the evening of November 14, 1940, a holocaust of bombs and fire destroyed much of Coventry. Experience the pain and the triumph of the townspeople when you visit the beautiful cathedral. The charred ruins of the old cathedral sit next to the exciting architecture of the modern cathedral. They stand together as a tribute to the indomitable spirit of the British people. (D)

### **September 11 – Epworth**

The quiet English countryside and green, rolling hills will delight you as you travel to remote Epworth in the Fen Country. Here, Samuel and Susanna Wesley raised their brood of children in the Old Rectory while he served the Parish Church for 39 years. You'll become familiar with the upbringing and early life of John and Charles Wesley when you visit their childhood home. You'll see Memorial Church, built with contributions from around the world. Finally, visit St. Andrews Church at Epworth. Return to your hotel. (B, D)

### **September 12 – Stratford & the Cotswolds**

Drive to Stratford-upon-Avon. You'll glimpse life as it was in the day of William Shakespeare when you visit his birthplace. Not far away, he courted his wife, Anne Hathaway, in the garden of her delightful thatch-roofed cottage. Enjoy a scenic drive through the charming villages of the Cotswolds, where honey-colored cottages cluster together in secluded valleys. (B, D)

### **September 13 – Oxford**

This morning, you will enjoy a walking tour of Oxford. Visit Christ Church College and visit the dining hall where John Wesley and other alumni are honored on the walls. See University College, the oldest college in Oxford (1249). C. S. Lewis received a scholarship to attend here in 1916 and, after entering the Officers Training Corps, was later sent to France in World War I. Walk through the University Church of St. Mary the Virgin. Here, the Oxford Martyrs were tried for heresy, and John Wesley preached

until his views were rejected. See Lincoln College and St. Mary's Church, where John was a professor. See the Sheldonian Theater, where scholars have graduated or been granted honorary degrees since 1669. John and Charles Wesley and C. S. Lewis were among the many famous people to have celebrated their degrees here. See the Eagle and Child Pub, where C. S. Lewis, J. R. R. Tolkien, and other writers met on occasion as part of the "Inklings" club. Return to your hotel for your overnight stay. (B, D)

### **September 14 – Oxford**

This morning, you will visit Magdalen (pronounced "Maudlin") College, where C. S. Lewis (Jack to his friends) was a fellow for most of his academic career. Here, Jack worked through his beliefs from Atheism to Theism to Christianity, as well as became the prolific writer and apologist known today. From here, travel to The Kilns, Lewis's home. Built in 1922, the Lewis brothers moved into the home in 1930. This would remain Jack's home until his death in 1963. You'll visit Holy Trinity Church, the church Jack and Warren attended in life and are buried in the graveyard here. The Narnia window in the church is of special interest. Enjoy free time in Oxford. Finish your day in Bristol for dinner and your overnight stay. (B, D)

### **September 15 – Bristol**

In the ancient port city of Bristol, you'll have a lecture in one of Wesley's early centers of ministry, the "New Room". This oldest Methodist building in the world is unusually attractive in its basic simplicity. Then, visit the home of Charles Wesley, the famous hymn writer. Enjoy time in the Broadmead shopping area or explore more of the historic port before traveling to London for your overnight stay. Dinner is on your own in London. (B)

### **September 16 – Wesley's London**

John Wesley left his mark on the town of London. You'll have a lecture at City Road Chapel, the site of Wesley's home and grave. Across the street in Bunhill Fields Cemetery, Susanna Wesley is buried along with other famous personages such as John Bunyan and Daniel Defoe. You'll walk on Aldersgate Street, where on May 24, 1738, John Wesley had his "Warming of the Heart" experience. You'll walk past the entrance of "Little Britain," where Charles Wesley had his conversion experience just three days earlier. Drive by the major city sites such as Marble Arch, Speakers Corner of Hyde Park, Trafalgar Square and much more. Your first view will be of Westminster Abbey, where royalty is christened, married and buried. You will visit St. Paul's Cathedral, where John Wesley often worshiped. On the day of his conversion, Wesley came here for an afternoon service and was deeply moved by the choir's anthem, "Out of the Deep Have I Called Unto Thee, O Lord". Dinner is on your own in London. (B)

### **September 17 – Free Day in London**

Experience the lifestyle of our British cousins as you explore the vibrant town of London on your own. Go and see the regal adornment of Buckingham Palace.

Take a ride on the London Eye. Visit the British Museum and wonder at ancient treasures and works of art. Experience a show in London's famous West End theater district. Enjoy any of these options or more as you enjoy the sights and sounds of London on your own today. Dinner is on your own in London. (B)

### September 18 - Return to the USA or Enjoy an Extension

Say farewell as you return to the USA or enjoy an exciting extension in Scotland.



### Register Early & Save

**\$200**

Register by September 9, 2024

|  |  |
|--|--|
| <b>\$150</b><br>Register by October 9, 2024  | <b>\$125</b><br>Register by November 9, 2024 |
| <b>\$100</b><br>Register by December 9, 2024 | <b>\$75</b><br>Register by January 9, 2025   |
| <b>\$50</b><br>Register by February 9, 2025  | <b>\$25</b><br>Register by March 9, 2025     |

*Full deposit required. Savings deducted from balance.*

**Starting at**

**\$4,898\***

**from Miami**

**\$4,998\***

**from Tampa, Orlando, Jacksonville,  
West Palm Beach, Ft. Lauderdale  
or Ft. Myers**

### YOUR ALL-INCLUSIVE PRICE INCLUDES:

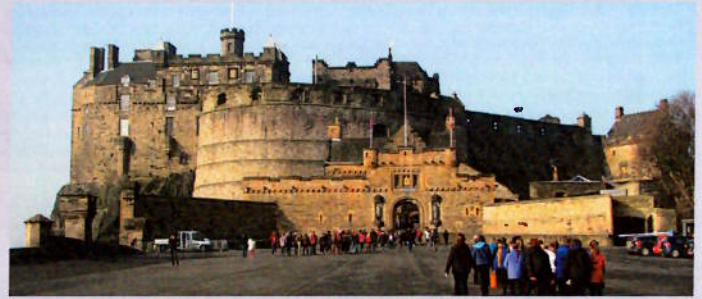
Basic Tour & Guided Sightseeing  
Round-trip International Airfare

Additional baggage & optional fees may apply; see fine print for details  
Fuel Surcharges and Government Taxes, Subject to change  
Admin. Fees, Entrance Fees, Hotel Gratuities & Program Fees  
Meals as Listed in the Itinerary

Deluxe Motorcoaches, First-Class Hotels & much more!

\*A 3.5% surcharge will be added to all credit card transactions.

## OPTIONAL EXTENSION



### Scotland

**September 18 - 22, 2025**

**Starting at \$1,998\***

#### September 18 – Flight to Edinburgh

Travel to Edinburgh by air and then transfer to your bus for a panoramic bus drive through the city and then check into your hotel for your overnight stay. (B)

#### September 19 – Edinburgh

This morning, you will begin to explore the city that has played an important part in our Christian heritage. Tour Edinburgh Castle, where James VI, who authorized the King James Bible, was born. Visit St. Giles Cathedral, the High Kirk (church) of Edinburgh, where John Knox was minister following the Scottish Reformation. Continue down Princes Street to the Sir Walter Scott Monument. Stay overnight in Edinburgh. (B)

#### September 20 – Stirling

This morning, you'll drive to Stirling, where we will stop at the Old Bridge, the site of the battle between William Wallace and the Scots against the British. Look out across Scotland from Abbey Craig and the Wallace Monument. Built to commemorate the Scottish hero in 1869, it is said Wallace watched the armies of King Edward I gathering from this spot prior to the battle. You'll also visit Stirling Castle, one of the best-preserved castles in Scotland. From here, visit the Church of the Holy Rude, founded in 1129. Stop at the monument and visitor's center at Bannockburn, the site of the pivotal battle in the Scottish Wars of Independence in 1314. Return to Edinburgh for your overnight stay. (B)

#### September 21 – Dunfermline Abbey, St. Andrews Church & Castle

Cross the Firth of Forth to Fife. Stop at Dunfermline Abbey, where St. Margaret and Robert the Bruce are buried. Continue past picturesque fishing villages to St. Andrew's, the ancient ecclesiastical capital of Scotland. Visit the ruins of St. Andrew's Cathedral and the nearby castle with its notorious "Bottle Dungeon." Here, John Knox and other reformers were held prisoner. Take a look at the "Old Course" at St. Andrew's, renowned as the home of golf! Return to Edinburgh for your overnight stay. (B)

#### September 22 – Return to the USA

Guests taking an extension may be on a different flight than their group and/or traveling companion.

\*A 3.5% surcharge will be added to all credit card transactions

## PROGRAM CONDITIONS

### INCLUDED IN PRICE:

• Round-trip international airfare • Deluxe motorcoaches • 1st class hotels • Guided sightseeing • Entrance fees to sites visited (as listed in itinerary) • Meals as listed in the itinerary • Hotel gratuities • Program fees • Administrative Fee • Fuel surcharges \$600 • Government Taxes \$98 (Increases in government tax and fees are subject to change)

### NOT INCLUDED IN PRICE:

• Optional Travel Protection Program (see premium schedule) • Extensions and optional sightseeing as listed in the brochure • Miscellaneous fees such as individual transfers, passports, laundry, Meals not listed in the itinerary, beverages at meals & baggage fees • Voluntary "Love Offering" for guide and driver • \$100 Document fee for Non-US/Canadian residents • Visa for non-US citizens • Required Vaccinations • Required medical testing before, during, and/or after travel.

### ACCOMMODATIONS:

Price is per person based on double occupancy. When available, single rooms are often smaller than doubles. While EOT will try to match roommates, EOT cannot guarantee a roommate will be available. Roommates may be assigned as late as 30 days prior to departure and, if one is not available or you request a single room, the following charges apply: \$998 during the basic tour; \$698 for Scotland extension.

### SAVINGS:

Early registration discounts or other promotions are deducted from the balance of your bill. Hosts/Co-hosts are not eligible.

### PAYMENT INFORMATION:

A 3.5% surcharge will be added to all credit card transactions.

### PAYMENT SCHEDULE:

| Payment                  | Amount  | Due Date  |
|--------------------------|---|---|
| Initial Deposit          | \$300   | Due upon registration   |
| Second Deposit           | \$1,500   | Due by 05/17/25   |
| Full Deposit             | \$1,800   | Payment received between 05/17/25 - 06/25/25 must pay the full deposit amount and may be subject to late registration fees. |
| Final Payment            | Due by 06/26/25. If paid after the due date, a late payment fee of \$100 will be assessed.  |   |
| Travel Protection Amount | The Travel Protection Plan premium will be due no later than 05/17/25 to be in full effect. Travel protection premiums must be paid in addition to our deposits and in advance of the final payment for coverage to be in effect. |   |

### REGISTRATIONS RECEIVED after May 17, 2025:

We welcome registrations after 05/17/25. Registrations received between 05/18/25 - 06/11/25 will incur a \$100 per person fee. Registrations received between 06/12/25 - 06/26/25 will incur a \$200 per person fee. Registrations received between 06/27/25 - 07/11/25 will incur a \$400 per person fee. Registrations received on 07/12/25 or later will incur an additional fee based on air availability. Additional fees will be advised upon registration.

### CANCELLATION FEES:

100% of Cancellation Fees are covered by the optional Travel Protection Program provided premium has been paid and reason for cancellation is coverable. Those who do not take travel protection should be aware of the following per-person cancellation penalties: From day of registration to 105 days prior to departure, you will be charged the \$100 non-refundable cancellation fee plus any airline fees. Additionally, thereafter, you will be charged any airline penalties and a single room supplement if your cancellation forces your roommate into a single plus the following per-person charges: 104-60 days = \$400; 59-45 days = \$600; 44-31 days = 40% of total cost; 30 days to day of departure = 100% of total cost. Submit cancellation in writing. On or after day of departure, there will be no refund for any services not used.

### STATEMENTS OF RESPONSIBILITY

EOT does not accept responsibility for losses or additional expenses due to delay or changes in air schedules, hotel overbookings, other hotel related problems or causes, and/or travel supplier cancellations or postponements. Travel suppliers include all tour operators, cruise lines, airlines, hotels, bus companies, entertainment venues, and any other travel supplier used to operate the tour. All such losses or expenses will be the responsibility of the passenger. EOT reserves the right to make adjustments to the itinerary as deemed desirable by EOT, and EOT reserves the right to cancel any tour prior to departure. If a tour is canceled beyond the control of EOT, EOT will provide a refund or a future travel credit to be used two years from the date of issuance for the value of all funds paid by the passenger less nonrefundable travel supplier prepaid deposits, travel supplier change fees, nonrefundable travel protection premiums, and a \$150 administration fee.

### FIT TO TRAVEL STATEMENT:

Passengers registering for the tour accept the responsibility for being in good health and able to walk and travel on the tour. Because many of the sites are not accessible to the physically challenged and space limitations on tour buses, wheelchairs and scooters cannot be accommodated. Those needing oxygen or other ambulatory assistance will find the tour extremely limiting in their experiences. Persons using C-pap machines requiring distilled water will need to inform us ahead of time, so we can work with local operators to prepare as it is not always available. EOT reserves the right to refuse or revoke travel to anyone who is, in the sole judgment of EOT, incapable of group travel without causing undue demands upon the staff or other tour participants. Accessible rooms/cabins are limited and subject to confirmation after receiving the passenger's written request. If you have questions, please see [eo.travel/fit-to-travel-statement](http://eo.travel/fit-to-travel-statement) or contact Educational Opportunities Tours Inc. for more details.

### PASSPORT INFORMATION:

Passport information must be submitted to our office no later than 05/17/25. Failure to provide your passport information to our office by this date may result in change fees or denial of travel. Discrepancies in information may result in change fees, delays in receiving travel documents for your trip, or denial of travel. Any fees incurred due to discrepancies are the responsibility of the passenger.

### PRICE INCREASES:

All prices quoted in this brochure are subject to change prior to payment in full due to currency fluctuations, fuel surcharge increases, government taxes and fees increases or unforeseen circumstances. In addition, you may be subject to a price increase after payment in full has been received due to potential government imposed taxes and fees.

### AIRLINE ROUTES and TICKETS:

In order to keep prices low, EOT does not guarantee the most direct routing to your final destination. Once issued, airline tickets cannot be changed or refunded thereafter. Air transportation to/from your destination will be economy class on IATA and ARC carriers utilizing APEX or SUPER APEX non-refundable, non-amendable tickets for groups of 10 or more flying together on entire itinerary. If you choose to depart from a different city than your group or traveling companion, or deviate your flight and/or trip plans, and/or you are taking a pre or post tour, you may fly on a different scheduled flight(s) than the rest of your group. If you make your own air arrangements, you are responsible for booking all needed flights for your travel unless specified otherwise. Contact guest services for further details.

### FLIGHT TIMES and SEATING:

All flights are subject to change by the airlines without advance notice. EOT is not responsible for such changes or delays and does not reimburse expenses resulting from such delays. If you are making your own flight arrangements to the departure city, we recommend you purchase a ticket that can be exchanged without large penalties. There is no advance seat selection for groups on most airlines. Early check-in is necessary to secure seats with travel companions and those with special needs. Due to security measures taken at airports, it is advisable to arrive at the airport three hours prior to departure time. Seating is solely under the control of the airlines.

### ADDITIONAL AIRLINE FEES:

You will likely incur additional airline checked baggage fees that are not included in the price of the tour. These fees vary by airline and are at the airline's discretion on each segment of the flight itinerary. Additionally, you may incur optional fees (food, excess baggage, overweight baggage, items of personal nature, etc.) as well. For more information, visit [eo.travel/travel-info/airline-fees](http://eo.travel/travel-info/airline-fees).

### ON OWN DEVIATIONS:

On Own Deviations from the standard tour program must be submitted in writing and are subject to additional airline fees, if applicable. Transfers for passengers who deviate are not included.

### ITINERARY CHANGES:

Every effort has been made to ensure the accuracy of this brochure. While EOT will make every effort to ensure you will see all sites listed in this brochure, the availability of sites, order of sites and/or days and number of days may be altered to accommodate changes in airline, hotel schedules, and local conditions. No changes to the itinerary are effective unless approved in writing and signed by an authorized officer of the tour operator. Except as stated herein, no other person is authorized to cancel, modify or vary the tour arrangements or to make any representation of warranty concerning the tour.

Due to airline schedules, some participants may receive one or two extra leisure days at a nominal per day charge and some extensions may not be available on all departure dates. If itinerary changes necessitate extra overnights, you will be charged \$125 per night; single rooms \$175 per night. Meals for extra nights are not included.

### VALIDITY DATE:

This brochure is valid until 05/13/24. If validity date has passed, current brochures may be found at [www.eo.travel](http://www.eo.travel). Registrations will still be accepted after the validity date.

### RELEASE INFORMATION:

Payment of deposit indicates permission for EOT or its agents to record the registrant's participation and appearance on video tape, audio tape, film, photograph, or any other medium and to use the registrant's name, likeness, voice, comments, submitted documentation, written papers, and/or biographical material without restrictions or limitation for any advertising, marketing, publicity, educational or promotional purpose which EOT or its agents deem appropriate, unless the registrant or guardian otherwise notifies EOT in writing prior to departure.

Enrollment in, payment of deposit and/or acceptance of final documents, vouchers, or tickets shall be deemed to be consent to the Passenger Agreement and Program Conditions of the brochure. Prices are based on tariffs in effect as of January 1 of the previous year and are subject to adjustment without notice in the event of any change or currency fluctuation.

Except where otherwise stated, EOT acts only as agent for the relevant supplier in securing hotels, transportation and other travel services and in no event shall EOT be liable for failure by any such supplier to render any transportation, lodging or other travel service to be provided on the tour. The passenger agrees that EOT assumes no liability for injury, death, damage, loss, theft, accident, delay, any lost or damaged luggage, or irregularity which may occur by reason of any negligent or willful act or omission of any suppliers of service.

EOT does not own or operate any of the suppliers of services to your tour. Similarly without limiting the foregoing, passenger agrees to hold EOT harmless for any defect in any vehicle, plane, boat, bus, car, van or other vehicle, act of war or insurrection, terrorist activity, revolt or other civil uprising, military action, strikes or labor unrest or any Act of God or for any other act of any third party. Florida law will be applicable to any dispute which arises out of or concerns this brochure or your tour. Any and all litigation must be brought only in and for courts in Polk County, Florida to the exclusion of litigation anywhere else in the world. Educational Opportunities Tours is the tour operator and is solely responsible for the travel program. Educational Opportunities Tours is registered with the State of Florida as a Seller of Travel. Registration No. ST24130. CST2027682-40.

## Travel Protection Plan - Premium Rates - For a full description of the plan, go to: [www.tripmate.com/wpF427E](http://www.tripmate.com/wpF427E)

| Trip Cost     | Cost* | Trip Cost     | Cost* | Trip Cost      | Cost* |
|---------------|-------|---------------|-------|----------------|-------|
| \$0 - \$1000  | \$89  | \$3501-\$4000 | \$399 | \$6501-\$7000  | \$699 |
| \$1001-\$1500 | \$149 | \$4001-\$4500 | \$449 | \$7001-\$8000  | \$799 |
| \$1501-\$2000 | \$199 | \$4501-\$5000 | \$499 | \$8001-\$9000  | \$899 |
| \$2001-\$2500 | \$249 | \$5001-\$5500 | \$549 | \$9001-\$10000 | \$999 |
| \$2501-\$3000 | \$299 | \$5501-\$6000 | \$599 |                |       |
| \$3001-\$3500 | \$349 | \$6001-\$6500 | \$649 |                |       |

### Schedule of Benefits

|                   |  |
|-------------------|--|
| Trip Cancellation | Up to 100% of the non-refundable Trip Cost |
| Trip Interruption | Up to 100% of the non-refundable Trip Cost |
| Missed Connection | \$500                                      |
| Trip Delay        | Up to \$150 Per Day, to Maximum of \$1,500 |

### Medical Expense / Emergency Evacuation

|  |             |
|--|-------------|
| Accident & Sickness Medical Expense          | \$25,000    |
| Medical Evacuation & Repatriation of Remains | \$50,000    |
| 24 Hour Accidental Death & Dismemberment     | \$25,000    |
| Baggage & Personal Effects                   | \$1,000     |
| Baggage Delay                                | Up to \$200 |

### Additional Cancellation Protection

When You purchase this Travel Protection Plan at or before the final payment due date for Your Trip, you also receive the Educational Opportunities Tours Non-Insurance Cancellation Waiver that allows you to cancel your Educational Opportunities Tours travel arrangements up to the day of departure for any reason (excludes no shows and those not permitted boarding). With this Educational Opportunities Tours Cancellation Waiver, your non-refundable land cancellation penalties will be reimbursed in cash or in travel vouchers (depending on your reason for cancellation). Certain travel programs are not eligible for this benefit, such as cruise and land programs listed and detailed on the Educational Opportunities website ([www.eo.travel](http://www.eo.travel)). **Plan costs must be paid in addition to initial or second deposit prior to the final payment for coverage to be in effect. Part A -Non-Insurance Cancellation Waiver** is provided by Educational Opportunities Tours. **Part B - Travel Protection Benefits** are provided by United States Fire Insurance Company and serviced by Trip Mate. \*In MN and NY, a different cancellation waiver is available. Available for purchase separately in NY.

### Conditions and Limitations

The Travel Protection Plan is only available for citizens or residents of the United States of America.\*The plan cost includes the plan premium and a fee for non-insurance assistance services. You may obtain information on the plan fees by emailing [assistancefees@tripmate.com](mailto:assistancefees@tripmate.com). This advertisement contains highlights of the plans developed by Trip Mate Inc., which include travel insurance coverages underwritten by United States Fire Insurance Company, Principal Office located in Morristown, New Jersey, under form series T7000, T210 et al and TP-401 et al, and non-insurance Travel Assistance Services provided by General Global Assistance and FootprintID® and a non-insurance Cancellation Waiver provided by Educational Opportunities Tours. The terms of insurance coverages in the plans may vary by jurisdiction and not all insurance coverages are available in all jurisdictions. **Insurance coverages in these plans are subject to terms, limitations and exclusions including an exclusion for pre-existing medical conditions.** In most states, your travel retailer is not a licensed insurance producer/agent, and is not qualified or authorized to answer technical questions about the terms, benefits, exclusions and conditions of the insurance offered or to evaluate the adequacy of your existing insurance coverage. Your travel retailer may be compensated for the purchase of a plan and may provide general information about the plans offered, including a description of the coverage and price. The purchase of travel insurance is not required in order to purchase any other product or service from your travel retailer. CA DOI toll free number is 800-927-4357. The cost of your plan is for the entire plan, which consists of both insurance and non-insurance components. Individuals looking to obtain additional information regarding the features and pricing of each travel plan component, please contact Trip Mate, Inc. (dba Trip Mate Insurance in CA and UT; CA license #0805270); P.O. Box 527, Hazelwood, MO 63042; 1-833-297-2255; [assistancefees@tripmate.com](mailto:assistancefees@tripmate.com). While Trip Mate, Inc. markets the travel insurance in these plans on behalf of USF, non-insurance components of the plans were added to the plans by Trip Mate, Inc., and Trip Mate, Inc. does not receive compensation from USF for providing the non-insurance components of the plans.