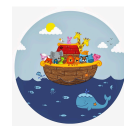


# Noah's Ark Preschool



@ Fortville Church of the Nazarene

701 S. Maple St. Fortville, IN 46040 ~ [noahsarkpreschoolfortville@gmail.com](mailto:noahsarkpreschoolfortville@gmail.com)

---

## **Registration Form - 2024/2025 School Year**

The goals of Noah's Ark Preschool include providing your child with a feeling of belonging and acceptance, promoting the development of a positive self-image, preparing them for the future and encouraging independence and individual expression. Your child will gain experience in social relationships, academically prepare for kindergarten and will build a tie between church, home, and school. Most importantly, the preschool will allow your child the opportunity to know God's love.

### **Registration**

To enroll your child in Noah's Ark Preschool, a completed registration form must be returned along with the required fees. Once registered, you will receive a confirmation email sent to the email address on the form. Questions should be directed to Jennifer Slattery at [NoahsArkPreschoolFortville@gmail.com](mailto:NoahsArkPreschoolFortville@gmail.com)

The yearly non-refundable registration fee is \$50.00, the yearly supply fee is \$75.00, and the yearly snack fee is \$50.00 equaling \$175.00 due at the time of registration. The supply and snack fees will be refunded if your child is withdrawn before July 1, 2024. Enrollment is on a first come, first serve basis.

### **Tuition**

Tuition can be paid annually, bi-annually, or monthly. If paid monthly, it is due on the first of the month. The first payment is due in August 2024 at Back to School Night.

#### **3 Year Old Class**

Annually - \$1260

Bi-Annually - \$630

Monthly - \$140

#### **4 Year Old Class**

Annually - \$1665

Bi-Annually - \$832.50

Monthly - \$185

#### **Lunch Bunch (for the 4s Class)**

Annually - \$450

Bi-Annually - \$225

Monthly - \$50

### **Class Information**

The 3-year-old class will meet on Tuesdays and Thursdays from 9:00-12:00. Children must be 3 by August 1 to enroll in this class. This class has two teachers and is open to 16 students.

The 4-year-old class will meet on Mondays, Wednesdays, and Fridays from 9:00-12:00. Children must be 4 by August 1 to enroll in this class. This class has two teachers and is open to 20 students.

The 4-year-old class offers a lunch bunch option. This program extends the day until 1:00. This class has two teacher and is open to 15 students from the 4-year-old class.

### **Enrollment**

Enrollment is on a first come, first serve basis. Return the registration form and the \$175.00 fees to the preschool.