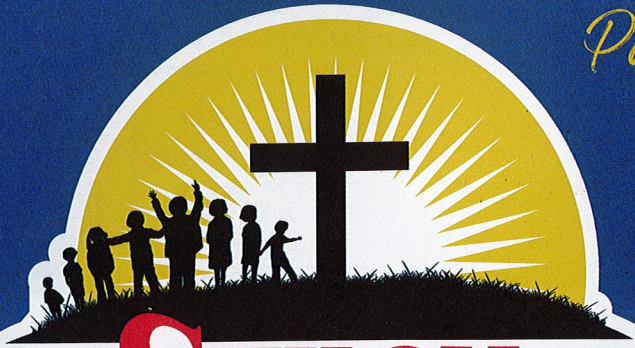


SINCE 1977

SPRING 2024

ACHIEVEMENTS

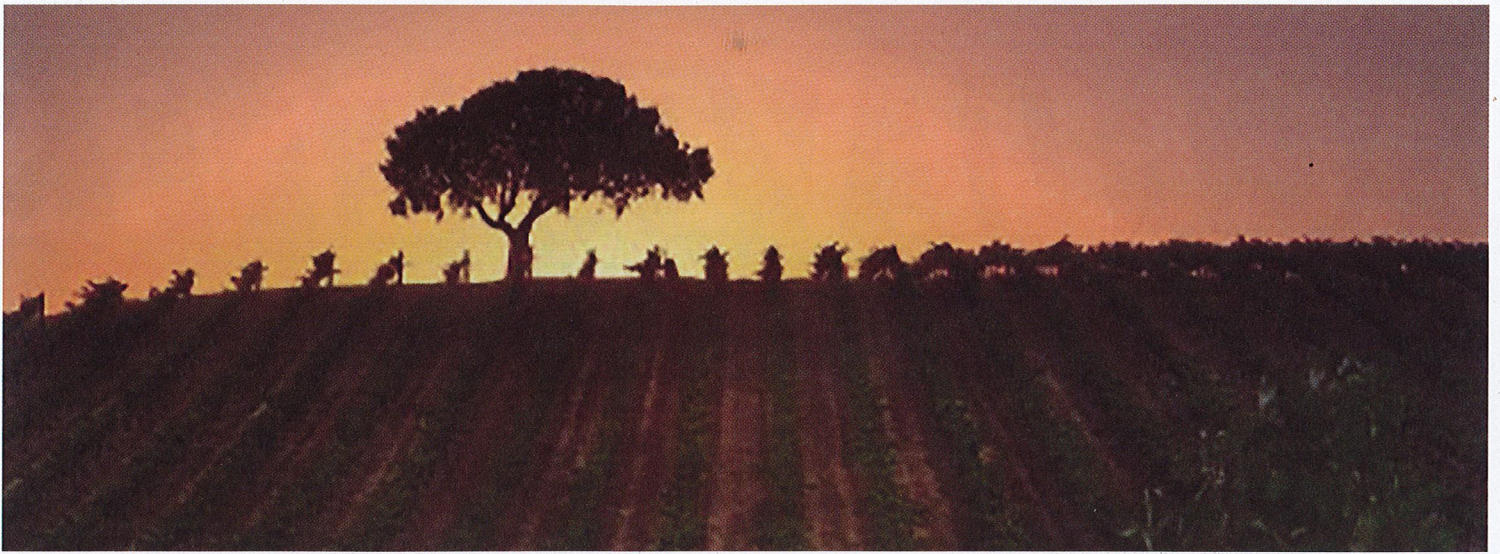
Partnership Makes This Possible...



Your update from the ministry of
Shiloh Christian Children's Ranch.

SHILOH
Christian Children's Ranch





“A man had a fig tree growing in his vineyard...”

Your partnership helped Ashley to find roots and flourish!

Let your biblical imagination wander into Luke 13:6-9. Ask yourself if that’s a “rabbit hole” near the base of that fig tree? We are about to head into Wonderland.

I wonder, why is there a fig tree in this parable? More odd questions sprout.

“Little Fig Tree, did you just spring up among all these grapevines? Did Someone plant you here? If so, Who? And why? And what will ever become of you?”

Like the little tree in this Bible story, a tender sapling named Ashley was three years old when she was adopted by a good family in the Pacific Northwest in hopes of a better life.

Despite her new family’s best efforts, our little sprout did not really get her roots established in that setting. It is

surprising to know the current trend of about 30% of Shiloh’s placements are from struggling adoptive families.

When Shiloh received the call to help five years ago, the Moores were willing to transplant this now budding, ado-

lescent into their home.

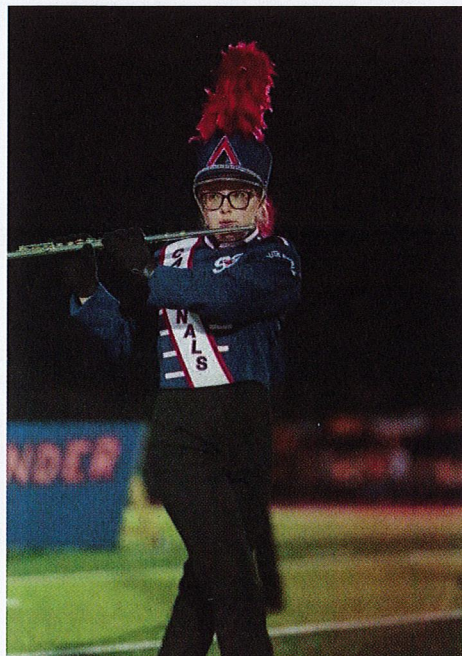
Just as the Vinedresser was determined to work with the fig tree, so were Kirk and Denae willing to provide what they could to help Ashley’s life take root and flourish.

Ashley says some early pruning was required by way of consequences for some dishonesty.

But after the first two weeks, she made the adjustment to her new environment.

“I began to feel better about myself even early on. I had been home-schooled online and had few social skills,” she recalls. Mom gave me some new tools,” she confides. “The whole family helped me with reading social cues.”

Ashley’s character responded well to the “nutritional” elements that Shiloh added to her life.



Your gift will help Shiloh youth pursue their goals.

Ashley is compassionate, trustworthy, and has overcome obstacles to live a Christian lifestyle.



She is still receptive to her Homeparents' attentive nurture through spiritual food, water and the light of Christ's love.

As in nature, growth comes quietly, yet beautifully under such care. "My parents are just amazing! I love them!" She cites their love for each other and their love they give all their kids.

Her sponsor for Fellowship of Christian Athletes, Kevin Mitchell, notices her progress in the past three years.

"Ashley is compassionate, trustworthy, and has overcome obstacles to live a Christian lifestyle." Mr. Mitchell

"She wrote me a letter or note for each holiday to let me know I am worthwhile and loved... I really appreciated that!" - Mr. Mitchell

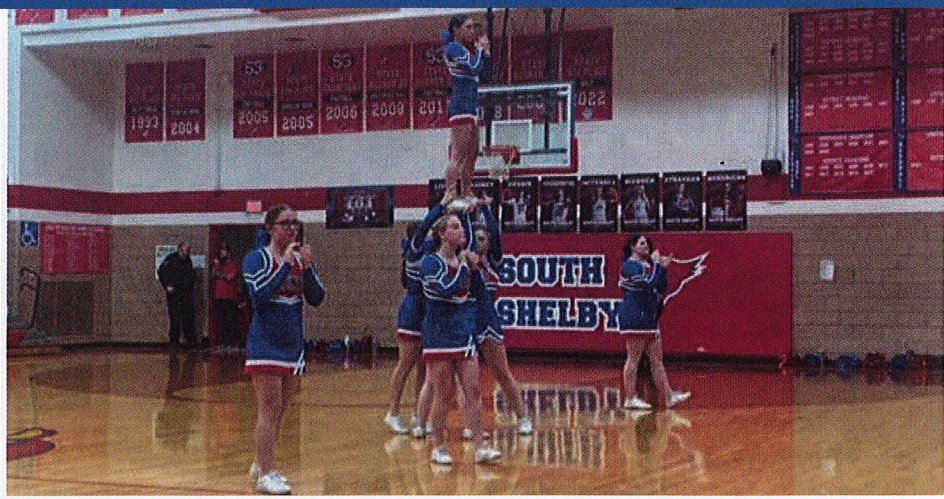
adds, "She wrote me a letter or note for each holiday to let me know I am worthwhile and loved... I really appreciated that! loved! He notes that Ash-

ley makes others feel "...needed, productive and loved."

Tim Maddex, her high school Principal concurs. "Ashley has grown tremendously since coming to Shiloh. She has transformed from a shy quiet young lady to a leader of students. This shows through with her work at MACTEC, FCCLA, and FCA at South Shelby.

Serving as both a regional and chapter officer in Family, Career and Community Leaders of America (FCCLA) and studying Early Childhood Training via the Macon Area Career and Technical Education Center (MACTEC), have helped Ashley stretch skyward in her junior year.





She's truly enjoying teaching pre-school children about, "...shapes, colors, and the alphabet." Ashley grins and concludes, "They're learning how to learn!"

We don't know the outcome for the parable fig tree, but we have vibrant evidence with its human counterpart.

Your faithful prayers and partnership have given Ashley a place and the space to grow.

Rooted in Christ. Nurtured and pruned by loving parents in Christ. Now, growing to serve Christ and her community.

Your love for Jesus and for Shiloh's children creates a divine partnership where you are more than just co-laborers in the Lord's Vineyard.

You are co-heirs of the harvest!



601 N. Center, Box 606 • Shelbina, Missouri 63468
Telephone 573-588-2191 • Fax 573-588-7730
e-mail: shiloh@shilohranch.org

Your gift is very much appreciated and fully deductible as a charitable contribution. A copy of our latest financial report may be obtained by writing to **Shiloh Christian Children's Ranch, 601 N. Center Street, Shelbina, MO 63468 and 573-588-2191.** Shiloh Christian Children's Ranch was formed in Missouri. If you are a resident of one of these states, you may obtain financial information directly from the state agency: **FLORIDA** – A COPY OF THE OFFICIAL REGISTRATION AND FINANCIAL INFORMATION MAY BE OBTAINED FROM THE DIVISION OF CONSUMER SERVICES BY CALLING TOLL-FREE, 1-800-435-7352 (800-HELP-FLA) OR ONLINE AT www.FloridaConsumerHelp.com. REGISTRATION DOES NOT IMPLY ENDORSEMENT, APPROVAL, OR RECOMMENDATION BY THE STATE. Florida Registration # CH47516. **MARYLAND** – For the copies and postage, Office of Secretary of State, State House, Annapolis, MD 2140. **MISSISSIPPI** – The official registration and financial information of Shiloh Christian Children's Ranch may be obtained from the Mississippi Secretary of State's office by calling 1-888-236-6167. Registration by the Secretary of State does not imply endorsement. **NEW YORK** – Office of the Attorney General, Department of Law, Charities Bureau, 120 Broadway, New York, NY 10271. **PENNSYLVANIA** – The official registration and financial information of Shiloh Christian Children's Ranch may be obtained from the Pennsylvania Department of State by calling toll-free, within Pennsylvania, 1-800-732-0999. Registration does not imply endorsement; **WASHINGTON** – Charities Division, Office of the Secretary of State, State of Washington, Olympia, WA 98504-0422, 1-800-332-4483. Registration with any of these state agencies does not imply endorsement, approval or recommendation by any state.