



THOMPSON
MEMORIAL

PRESBYTERIAN CHURCH

TIDINGS

Summer 2025 Edition

TABLE OF CONTENTS

Building What Matters - 1

Lambertville Bridge Mission - 3

Finance Update - 5

Mission Trip - 6

Act 2 Summer Events - 7

Rally Day and Staff Update- 8

BUILDING WHAT MATTERS:

WORSHIP CONNECTION IMPACT

Phase 1 and Beyond

On June 2nd 2025, we broke ground and began construction on our Building What Matters campaign. The Building What Matters campaign isn't just about fixing what's outdated or making things more beautiful—it's about making space for what God is about to do. It's about making space for joyful worship, deeper connection, and lasting impact. We have been under Phase 1 of the project, where renovations will focus on the lower level and children's areas (excluding the chapel). The Conference Room, Fellowship Hall, and the kitchen have remained open and uninterrupted during this Phase. We plan to be complete with this Phase of the project by **September 5th**.

Phase 2 is set to begin shortly thereafter, where the focus will shift to the Fellowship Hall, kitchen, office area and lobby. The lower level large group space will be completed, and the offices will move downstairs. Children's Ministry will also move into their new space. Throughout all of these changes, the Sanctuary remains open and uninterrupted. The construction is anticipated to last 9 months and finish in the first quarter of 2026.

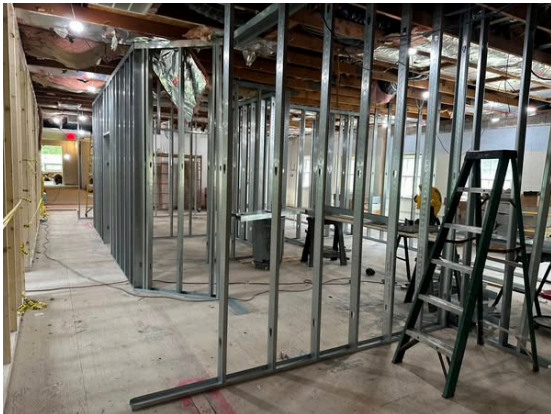
On the next page, you will be able to see photos of our progress, as well as our current pledge totals and how to contribute to our project and campaign.

(cont'd on next page)

TIDINGS 1

Building What Matters

As of August 4th, we have raised **\$3,003,894.26** in pledged dollars towards our Building What Matters project and campaign, with a total goal of \$4,000,000 and \$1,627,260 received to date. To contribute to our campaign, complete a Declaration of Giving form found on our website or find paper copies available on the Table of Well Wishing. We thank you in advance for your generosity, continued support, flexibility, and faith as we take this next bold step together.



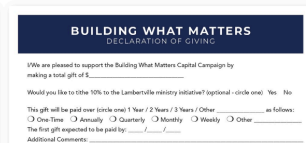
Building Campaign Materials

We've updated our building campaign brochure and FAQ to keep our congregation and community as up to date as possible with the current state of the project.
Click the images below to browse our brochure, FAQ, and Declaration of Giving form.

Brochure

FAQ

Declaration of Giving Form



You can also take a look at **tmpe.org/building** to browse our brochure, read through our FAQ, and find out how to pledge for our project.

The Bridge: A Ministry Update from Lambertville

In 2024, the Session of Thompson Memorial Presbyterian Church received word that several Protestant churches in Lambertville had either closed or were significantly struggling. As many of our members live in or have deep connections to Lambertville, we felt called to offer support in any way we could to our neighboring town.

In response, we formed a team under the name **The Lambertville Ministry Team**, composed of individuals who live in Lambertville and are committed to its flourishing. The team is chaired by Jeff Campbell and includes Nancy Campbell, Jim and Dawn Alpaugh, Bill Stauffer, Cathy and Tim Sandford, and Stephanie Templin Ashford.

A few months into our planning, the team discerned the name **The Bridge Lambertville** for our ministry offerings—reflecting our desire to build meaningful connections between communities, neighbors, and God. Our long-term intention is to foster a vibrant, inclusive worshipping community.

The team has met monthly to think, dream, pray, and plan. We also met with local leaders and officials—including the mayor, the town librarian, and leaders of local service organizations—to listen deeply to the needs of the community.

Our close mission partner, Fisherman's Mark, enthusiastically offered to collaborate. They were already conducting a Needs Assessment for the town, and when their report was completed, it was shared with our team. Two primary needs were identified: affordable housing and assistance with utility bills. In response, TMPC provided \$5,000 to The Bridge, allowing Fisherman's Mark to assist local residents in need.

To establish a visible presence in the community, The Bridge participated in Shad Fest, where we handed out dozens of balloons and invitations to an upcoming Coffeehouse-Style Event.

That event was held in May at **The Kalmia Club** and welcomed approximately 40 people from both the church and the wider Lambertville community.

Currently, the team is working to restore a **weekly community meal**, which had ended when **Centenary United Methodist Church** closed. We are in the process of securing a location and identifying leaders to help facilitate the meal. Once a location and leadership team are confirmed, we will begin promoting the meal and extending invitations to both the TMPC and Lambertville communities.

(cont'd on next page)

The Bridge: A Ministry Update from Lambertville

It is our hope that the meal can be accompanied by a Bible study or another spiritual offering, either during the meal or on a weeknight.

Throughout this process, we have worked in collaboration with the Presbytery of the Highlands, in which Lambertville is located. The Presbytery has been supportive of our vision and efforts but has clarified that while The Bridge may offer a variety of ministries, we are not permitted to hold a formal worship service at this time.

We have also attempted to build partnerships with existing Lambertville churches. We approached the Lambertville Presbyterian Church to request use of their gymnasium, but so far, permission has not been granted. In addition, we've reached out to St. Andrew's Episcopal Church, the Lambertville Music Hall (formerly the Baptist Church), the VFW, and the Elks Club to inquire about potential space for hosting events.

Some individuals interested in this ministry have suggested securing a permanent space or even purchasing a building to host Bible studies and community gatherings. While we would be open to having a dedicated space in Lambertville in the future, we currently do not have a specific location or funding available.

We invite you to **pray with us**—that God would make the path clear, open the right doors, and guide each step of this unfolding ministry.

Thank you for your interest and support in this hopeful and Spirit-led opportunity.

With gratitude,
The Bridge Ministry Team



Finance Update

Please take this time to look through an update from our Finance Committee which details a financial snapshot from January to May.

As of May, year to date giving is exceeding our 2025 Budget and expenses are trending below expectation. The net result is a year-to-date surplus of \$96,652. The budget also anticipated a surplus at this point in the year mostly due to the timing mid-year disbursement of Benevolence Funds. However, our actual surplus is exceeding the expected surplus by \$26,781.

Thompson Memorial Presbyterian Church General Fund Income Statement

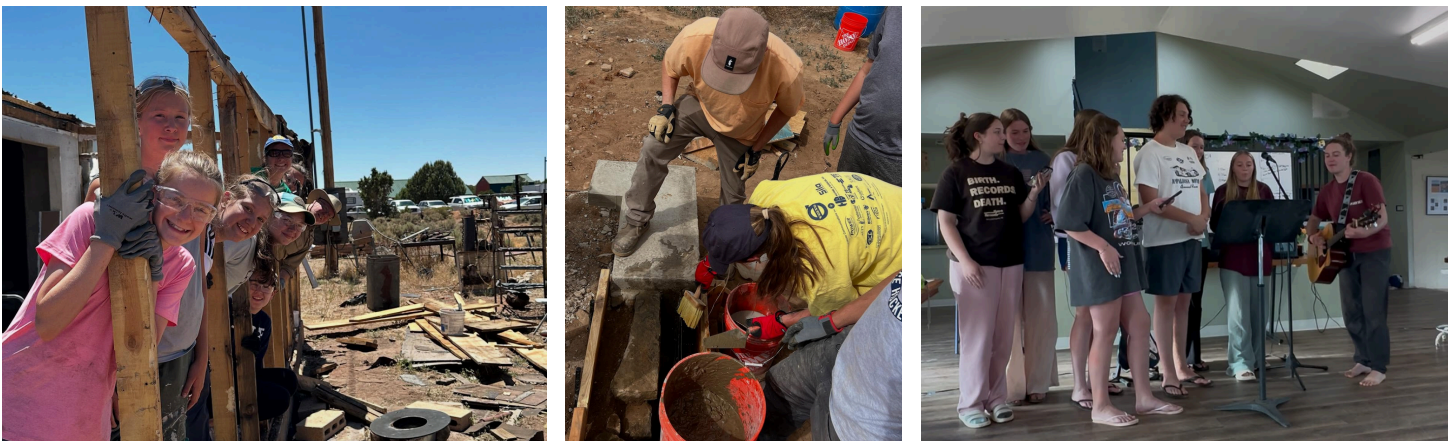
	Actual YTD	Budget YTD	Actual Vs Budget YTD	2025 Annual Budget
General Fund Donations and Income	\$ 488,455	\$ 467,472	\$ 20,983	\$ 1,055,000
Expense				
People	\$ 252,416	\$ 263,701	\$ (11,285)	\$ 632,823
Place	\$ 83,269	\$ 77,324	\$ 5,945	\$ 175,742
General Fund Benevolence	\$ 9,854	\$ -	\$ 9,854	\$ 129,902
Musice and Worship	\$ 14,226	\$ 21,127	\$ (6,901)	\$ 49,154
Education	\$ 10,094	\$ 12,650	\$ (2,556)	\$ 29,700
Membership Programs	\$ 13,244	\$ 14,270	\$ (1,026)	\$ 29,150
Apportionment , Net	\$ 8,566	\$ 8,529	\$ 37	\$ 8,529
Other	\$ 134	\$ -	\$ 134	\$ -
Total Expense	\$ 391,803	\$ 397,601	\$ (5,798)	\$ 1,055,000
Surplus (Deficit)	\$ 96,652	\$ 69,871	\$ 26,781	\$ -

Mission Trip Update

July 19th - 26th 2025



Our youth recently returned from an incredible mission trip to Arizona, where they spent the week serving alongside one another, growing in faith, and building deep connections. The team worked hard on home repair projects—including painting, hauling materials, and laying a foundation for a new house—while also enjoying evening devotions overlooking a canyon, attending worship, sharing music, and learning how to make traditional Navajo flatbread. The trip ended with a meaningful visit to the Grand Canyon. Thank you for your prayers and support!



Act 2 Summer Events

Beekeeping

Thursday August 14th, 1 pm



What's the Buzz? Are those honeybees in my backyard? Annette Wilson, local businesswoman and amateur beekeeper, will give a fascinating talk on all things about honeybees on Thursday, August 14th at 1:00 PM in Fellowship Hall.

Gift Card BINGO

Friday August 22nd, 5 pm



Join Act 2 for an evening of BINGO, prizes, games, and more on August 22nd at 5:00 PM in Fellowship Hall. Sign up is linked on the website and in the e-news.

Upcoming Events for Act 2

Wednesday October 8th: ACT 2 will host a tour of Byer's Choice followed by lunch

Wednesday October 22nd: Guided Bus Tour of Valley Forge with lunch at Black Powder Tavern



Act 2

Act 2 is Thompson Church's older adult ministry. This group is open to all people, but is focused on activities geared toward those who are in the second act of life when fellowship is truly welcomed and enjoyed. We are more than prime timers, senior citizens or older adults.



Stay up to date with everything Act 2 and find sign ups in one easy place by visiting tmpc.org/seniors

Save the Date- Rally Day



Welcome Dr. Zena Tredinnick-Kirby

We are thrilled to share that Dr. Zena Tredinnick-Kirby has officially accepted the position of **Director of Children and Youth Ministries** here at Thompson Church!

Zena brings with her a wealth of experience and a heart for ministry. She holds a PhD in Education and has spent years in the classroom as a high school

teacher. In addition to her professional background, Zena has been deeply involved in church life—teaching Sunday School, assisting with Kids' Club, supporting Community Meal, and contributing to our VBS curriculum development. Her gifts in both education and spiritual formation make her a tremendous addition to our team.

Zena is full of energy, compassion, and creativity, and she's excited to walk alongside our children, youth, and families as they grow in faith and community.

Please join us in giving her a warm welcome as she steps into this important role in the life of our church!