



"Where two or three are gathered in my name, there I am with them also." – MATTHEW 18:20



ONE FAMILY, UNDER ONE ROOF

For generations, the churches of Assumption, Saint Bartholomew, Saint Bridget and Saint James were cornerstones of Catholic life in Manchester. They built the foundation of faith on which we now stand and from which we continue to grow. Today, as Saint Teresa of Calcutta Parish, we are one vibrant and welcoming community that blends Catholic tradition with a dynamic, modern approach, offering a unique worship experience that draws in families, students and seekers alike.

We now have the opportunity to honor our legacy while shaping a unified future. With a new church, we can become what we are called to be: one family, celebrating together under one roof.

Parish 2030 is our long-term plan to ensure the vitality of Saint Teresa of Calcutta Parish for decades to come. The Parish 2030 plan is based on the financial and operational realities of today's Catholic community, feedback and desires shared by parishioners, and the results of the in-depth study of the potential future of our parish completed last year.



A BOLD VISION FOR OUR FUTURE

Our vision is to build a new, fully accessible church alongside the creative repurposing of the historic Saint James Church. This plan responds to the realities of our time — an aging priest population and the need for fewer but fuller Masses, combined with the growing size and energy of our community.

OUR PLAN: THE SAINT TERESA OF CALCUTTA CHURCH ESTIMATED COST: \$25 MILLION

The Parish 2030 plan blends reverence for our past with a vision for renewal. By repurposing and preserving Saint James Church and creating a new sanctuary that reflects our identity, we step boldly into a shared future.

✝ NEW WORSHIP SPACE

We will build a beautiful, modern and sacred space inspired by all four of our founding churches.

The new church will feature:

- Pew seating for 1,000 on the main level.
- A choir loft and future seating for 500 on the second level.
- Fully ADA-compliant design with direct access from the parking lot and new connector building.

✝ REPURPOSED SAINT JAMES CHURCH

We will preserve the building's historic character while creating community spaces that serve our mission.

It will feature:

- Flexible space for religious education, small groups and parish gatherings on the upper level.
- Parish offices, meeting rooms and support spaces on the lower level.

✝ NEW CONNECTOR BUILDING

This bright, glass-lined space will link the new church and Saint James Church.

It will feature:

- About 3,500 square feet on the main floor and 1,500 on the second floor.
- Gathering space with natural light and direct access to both worship and community areas.

✝ CAMPUS AND GROUNDS

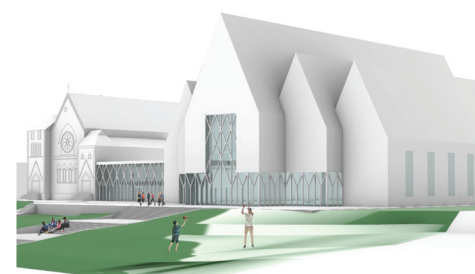
We want a beautiful and accessible campus with a welcoming presence.

Our campus will feature:

- Expanded parking through adjacent and nearby lots.
- Barrier-free access and more handicap-accessible parking spots.
- Beautiful and intentional hardscaping and landscaping.

TO ACHIEVE THE FIRST STEP

Thanks to responsible planning and investment, as well as the generosity of our thriving community, our parish has \$15 million earmarked for this project. We need to raise an additional \$10 million to bring this vision to life. To begin, we are launching a campaign planning study with the help of the Steier Group, a leading Catholic development firm. This study will gather input from our community and give us a better idea of what's possible. We want to hear from you in this study — your voice matters!



THANK YOU!

This plan is about building something bigger, something deeper than a new church building. We are building a faith home, a warm and welcoming place for the unchurched, a renewed sense of unity for our parishioners, and a vibrant Catholic presence in the heart of Manchester. We're building our Saint Teresa family. Thank you for your prayers, your faith and your support as we move forward — united, as one family under one roof.

Saint Teresa of Calcutta Parish
80 Main Street
Manchester, CT 06042
860.643.2403
parish2030@saintteresacatholic.org
SaintTeresaCatholic.org