

SIERRA BIBLE CHURCH | SONORA CA

BUILT TO
Belong

SIERRA BIBLE CHURCH

Sonora

BUILDING A PLACE FOR YOUTH TO BELONG
FOR GENERATIONS TO COME



TABLE OF CONTENTS

LETTER FROM THE LEAD PASTOR	04
THE NEXT GENERATION	05
THE PAST	07
THE PLAN	09
THE PROPOSAL	11
THE PURPOSE	13
THE PRAYERS	15
FOR MORE INFORMATION	17

We are all in.

A LETTER FROM THE LEAD PASTOR



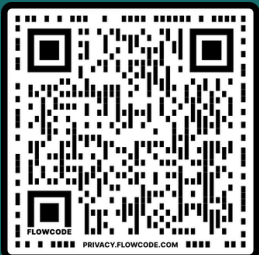
I am filled with anticipation as we begin our “Built to Belong” campaign together. I believe that God is asking us to follow Him with purpose and sacrifice. I believe that God has a role for each of us, some small and some big. I believe it is our turn to take stock and take action, joining God in His mission to make disciples and love this next generation really well.

I have always loved anticipation. I have to make sure I’m not dreaming up the future simply because I want to get excited about it. A wise leadership principle that I have never liked, and rarely adhere to is “Under promise and over deliver.” Can you imagine the young anointed King David walking into the valley to meet Goliath and underpromising the victory. He does anything but that. Rather, he says, “Have you met my God?”

I have met his God and I find myself wanting to pray hard, *over promise*, work diligently and live with anticipation to see what God does.

Thank you for caring. Thank you for considering in prayer what your role might be. I pray we get this done, open the doors and say to the students of Tuolumne County, “Have you met my God?”

Nate Levering
Lead Pastor



Scan the QR code
for all updates on
Built To Belong.

THE NEXT GENERATION

OUR HOPE IS TO CREATE A PLACE FOR YOUTH TO FEEL THEY BELONG, A HEALTHY SPACE FOR COMMUNITY TO GATHER & GROW TOGETHER AND TO BLESS OUR NEIGHBORS & SERVE OUR FAMILIES.

Our Hope



It has become even more apparent that the kids in our community long for a place to be known and loved. In a time where we would assume they are well connected, the truth is that they can so easily become disconnected. They pray for close friendships and seek adult guidance from those who want to pour into their lives. Kids have come to know that the church is a place where they can experience God's love, grow in relationship with Him and with others. It's important for us to provide an atmosphere where kids and youth know that they belong, and they have a God who desires to meet them right where they are.

Rachel Tidwell
Kids Ministry Director



Just the thought of this season brings joy to my heart. Not only are we beginning the process of a new youth building but the students of Tuolumne County will have a place that was built for them to belong for years and generations to come. The word "belong" refers to the concept of being a part of, fitting in, or being connected to a particular group, place, or situation. It describes an individual's sense of ownership or attachment towards something or someone. This is what we desire for our students. God is doing big things, and I can't wait to see how He moves next.

Jason Rivera
Student Ministries Pastor

PRAYERS FROM KIDS MINISTRY

"I pray for super nice friends".

"I'm asking God for my friendships to stay positive and supportive".

"I hope that God gives me kind friends this year that can come to church with me".

"I will establish My kingdom forever if you continue strong in keeping My commands and My rules, as you are today. Now therefore in the sight of all the assembly of the LORD, and in the hearing of our God, observe and seek out all the commands of the LORD your God, that you may possess this good land and leave it for an inheritance to your children after you forever."

1 Chronicles 28:7-8



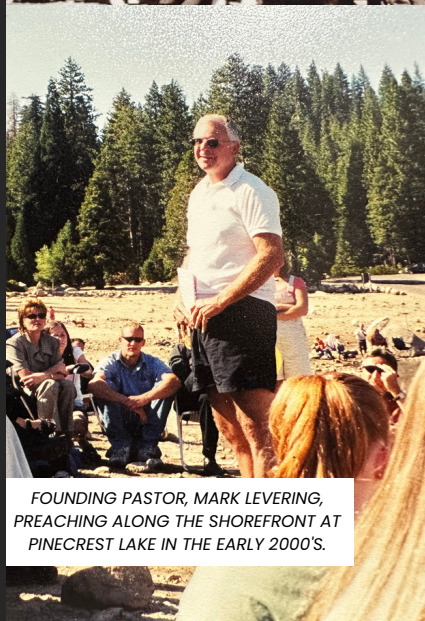
OUR HISTORY

By God's grace and the generosity of His people, Sierra Bible Church has had much to celebrate in the last 50 years. In 1973, a group of 10 families doing life in Sonora, CA came together with a vision of a church that would impact their lives, the community, and the world. What those 10 families learned is that for the church to be the Church it would need a building or two.

In 1982 we purchased and built out a piece of property on Peaceful Valley Road. Sierra Bible outgrew this location and in 1999 purchased its current property on Tuolumne Road. The location changed, the original commitment was 'built upon', many new faces were added to this thriving community, and one thing stayed very much the same - our mission, to know Jesus and make Him known.



SBC MET AT THE SONORA GRANGE HALL IN THE EARLY 1970'S BEFORE WE OWNED ANY LAND OR BUILDINGS.



FOUNDING PASTOR, MARK LEVERING, PREACHING ALONG THE SHOREFRONT AT PINECREST LAKE IN THE EARLY 2000'S.

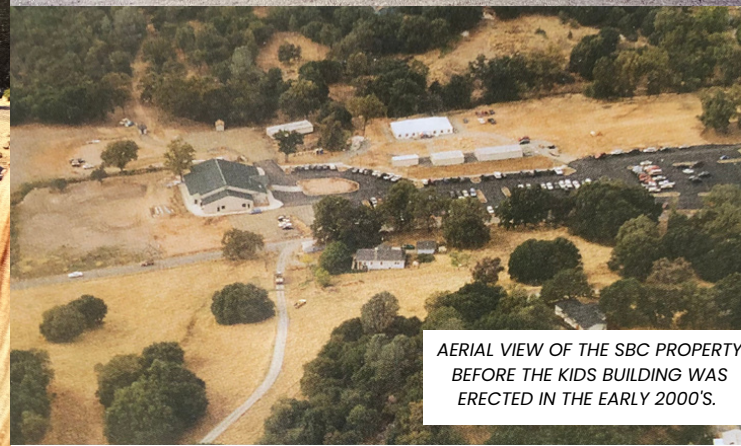
TELLS A STORY.



WHEN SBC SETTLED AT OUR CURRENT LOCATION, WE MET IN A TENT WHILE THE WORSHIP CENTER WAS BEING BUILT.



HERE YOU SEE THE WORSHIP CENTER BEING BUILT IN THE LATE 1990'S.



AERIAL VIEW OF THE SBC PROPERTY BEFORE THE KIDS BUILDING WAS ERECTED IN THE EARLY 2000'S.

We were looking for a church when we moved up here 28 years ago. What made a difference was when a family noticed we were new and invited us to share lunch after church. That was easier to do back then as SBC was much smaller. Then we joined them in their LifeGroup and met their friends. We began serving in Worship Ministries where we built an ever widening circle of people who meant a lot to us. Sometimes I miss those tight knit days, but God has been good in giving us godly instruction, fellowship and purpose throughout. Sierra Bible Church is our home and our family.

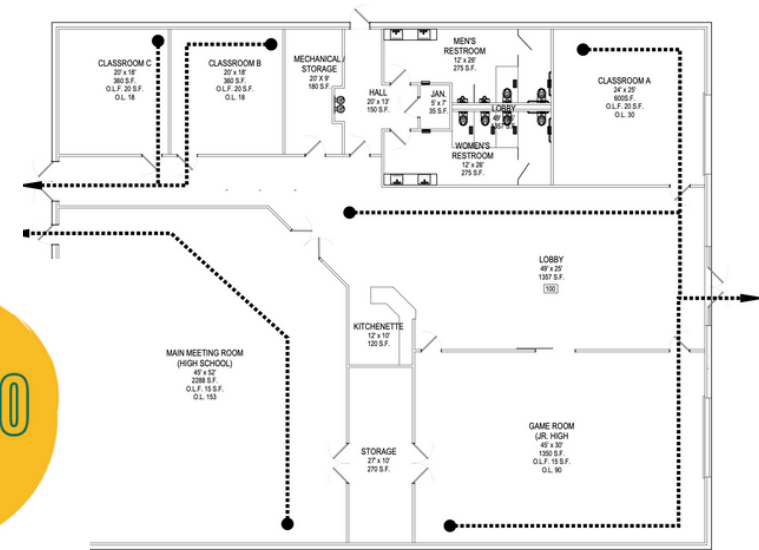
-The Seek Family

THE Plan

CAMPUS REDESIGN AND THE BOTTOM LINE

It is God's stirring around our mission that has us ready to build again. Like most churches in America, the past three to five years have been filled with unprecedented change accompanied by time to seek God's plan. How thrilling it has been to know that God has good plans for us to build upon the faithfulness of those that have gone before us and those that have given generously for us. It is now our time to step up and speak up, to say to a community bursting with opportunity and need, *"this is what the Church is"*.

When SBC moved onto its beautiful campus in 1999 we had what we thought was the campus masterplan. Over the past 24 years of wildly diverse and life giving ministry we have solidified who we are and how the flow of people moves on our campus. The beautiful and welcoming Commons area has become the central gathering point on our campus. We have plans to update and redesign the entry and flow to our Kids Building to maximize connections. As the ministry at Sierra Bible Church expands, we want to continue to grow together.



A HOME FOR STUDENTS. Sometimes the church needs another building. Imagine the students of Tuolumne County welcomed onto our campus and into our story in a simple yet beautiful, multi-purpose yet youth-focused, fully-outfitted 8,000 square foot Student Ministry building. As they walk past fire pits at the entrance they are greeted by loving volunteers. A look of anticipation as they step inside the large garage-like doors and into a spacious foyer to play a game, grab a coffee, head to worship team rehearsal, meet with their LifeGroup or jump on the wifi and get some tutoring. In conjunction with our youth dedicated space this building will facilitate various classes, recovery groups, mid-sized gatherings and growth events for people of all ages.

A HOME FOR ALL. We have already blessed both our neighbors and our church with the addition of our (#1 Rated in Tuolumne County!) 18 hole disc golf course, and with the first phase of our paved walking path. We envision a summer splash pad for kids, a youth-sized artificial turf field with amphitheater, and a dedicated bike area would create on our campus a gravitational pull for individuals and families who we can rub shoulders with and care for. We also have plans to relocate and redesign our Kids Building entry and access to create a connection with the Commons, our central gathering space. These changes will create new and diverse opportunities to know Jesus and make Him known, within our own body and out into our community.

THE Proposal

WHERE DO WE GO FROM HERE?

FIRST PHASE: \$2.7 MILLION

- 8,000 square foot youth facility
- Additional classrooms for Adult Sunday school, Bible studies, Celebrate Recovery and more!
- New back parking lot
- Traffic roundabout

COMPLETE PROJECT COST: \$4.1 MILLION

Community and Campus Priorities include:

- Remodel Kids Building with new entrance, new classrooms and patio area
- Turf field for soccer and t-ball
- Finish paving walking path
- Splash pad
- Amphitheater
- New office building



OUR NEXT STEPS TOGETHER:

We believe there is a role for everyone. Generosity is not the size of the gift but the size of faith required to give it. We are challenging ourselves to prayerfully do three things starting now. **Seek. Listen. Obey.**

We seek the Lord for his plans. We listen to what God is calling us to give. We follow Him in obedience and with great expectation.

We expect that this will be a time of sacrificial obedience on our part. We believe that God wants to use us, in this time, to make a difference for Him. We desire to be ALL IN as he leads.



BUILT TO
Belong

Tuolumne County has a rich history of community and generosity. In the last few years, we've seen our community grow in numbers and with that comes a need for space. It has and will always be the purpose of Sierra Bible Church, To Know Jesus and Make Him Known. He is our foundation. Now more than ever, we believe that these campus changes matter as we seek God's will, open as He leads us to create diverse opportunities, providing space for our community and the generations to come. We are ALL IN.

THE *Purpose*

There is no doubt that the favor of God has rested on Sierra Bible Church throughout the last 50 years. By the wise decisions, sacrificial action and passionate love of many before us – we have been blessed. We come together as grateful stewards of God's mission for this church, to its community and the world. As we began to sense this new direction together, the leadership of SBC has prayed the prayer of Moses from Exodus 33 when he tells God that "unless these are his plans and he goes with us – we will not move." But if God is in this, as we continue to trust that He is, we are ALL IN!



THE Prayer

- Father, as we move ahead in obedience to your leading, help us to honor your name in every part of this endeavor.
- Lord, in this project, make your goals our goals—expanding your Kingdom and accomplishing your perfect will.
- Lord, as we follow your lead, keep us wholly dependent on you in all we do and for everything we will need.



- Father, you've called us together in this purpose— help us all to humbly and graciously serve side by side.
- Lord, protect us from trusting our own resources, and fill us with the joy of seeing your bounty and blessings.



Scan for our
21-day Prayer
Booklet

BE IN THE

know ...



FOR MORE INFORMATION
OR TO GIVE, PLEASE VISIT
SIERRABIBLE.COM/B2B
OR SCAN THE QR CODE BELOW.

IF YOU HAVE ANY QUESTIONS,
PLEASE CONTACT THE CHURCH
OFFICE AT 209-532-1381.

