

# Sullivan Baptist Church

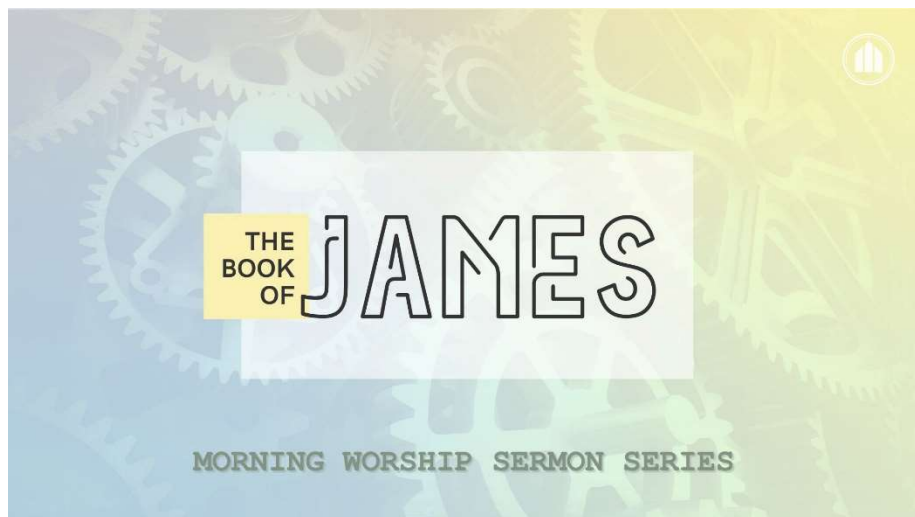
*The Lord's Day – December 28, 2025*

Rev. Jeff Strong, *Pastor*

Rev. Andy Coffman, *Minister of Music & Worship*

Sharon Arredondo, *Children's Ministry Director*

Paul Overbay, *Senior Adult Director*



*Resumes Sunday, January 11<sup>th</sup>.*



**Preschool Ministry: Birth thru Pre-K5s is available.**

*Children's Church is available for school age children through 3<sup>rd</sup> grade.*

**Dismissal to Children's Church during fellowship time.**

\*\*\*\*\*

## December Schedule:

**AM Worship only ~December 28<sup>th</sup>**

**No M.A.P. Group ~ December 30<sup>th</sup>**

**Church Office Closed ~ December 31<sup>st</sup>**

**No Wednesday Activities ~ December 31<sup>st</sup>**

**Church Office Closed ~ January 1<sup>st</sup>**

**Bible Fellowship ~ January 4<sup>th</sup>**

**AM Worship ~ January 4<sup>th</sup>**

**No PM Worship ~ January 4<sup>th</sup>**

**M.A.P. Group - ~January 6<sup>th</sup>**



<i>The Ministry Matters...December 21, 2025</i>	
Attendance	Stewardship
AM Worship.....324	Budget Received.....\$20,562.37 Building Fund.....\$55.00
Lottie Moon Christmas Offering...\$18,031.61	

## Dates to Remember

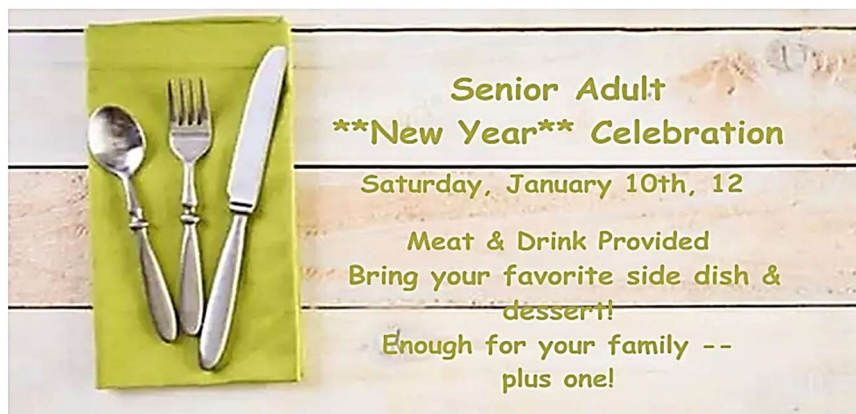
December 28 <sup>th</sup>	AM Worship only
December 28 <sup>th</sup>	No Evening Activities
December 30 <sup>th</sup>	No MAP Group
December 31 <sup>st</sup>	Church Office Closed
December 31 <sup>st</sup>	No Evening Activities
December 31 <sup>st</sup>	Deadline for Hats/Mittens
January 1 <sup>st</sup>	Church Office Closed
January 4 <sup>th</sup>	Bible Fellowship Resumes
January 4 <sup>th</sup>	AM Worship
January 4 <sup>th</sup>	No PM Worship
January 5 <sup>th</sup>	Deacon's Meeting, FH
January 6 <sup>th</sup>	M.A.P. Group, FH
January 7 <sup>th</sup>	Scholarship Deadline
January 10 <sup>th</sup>	Senior Adult New Year Celebration, FH
January 12 <sup>th</sup>	VBS Decorating Team, FH
January 25 <sup>th</sup>	CM Training, FH

<http://www.sullivanbaptist.org>

\*\*\*\*\*  
**Please note...**all donations (cash/check) made to Sullivan Baptist Church need to be received in the church office by **December 31, 2025**, to be counted toward your **2025** charitable giving. Online donations through our online giving platform (Tithe.ly) must be made by December 31, 2025, to be included in your 2025 statement.

\*\*\*\*\*  
**Offering envelopes for 2026...**Envelopes for submitting/recording your 2026 tithe/offering are available at the Welcome Center, the church office area & Bible Fellowship classes. Please note: Individuals desiring to have the church keep a contribution record for tax purposes must record your name & amount of tithe/offering on the outside of the giving envelope. Our financial secretary receives each submitted envelope.

\*\*\*\*\*



sullivanbaptist.org

[apply today](#)

## COLLEGE SCHOLARSHIP

GRAB A FORM AT THE WELCOME CENTER OR  
ONLINE AND TURN IT IN BY JAN 7<sup>TH</sup>.

imb
LOTTE MOON CHRISTMAS OFFERING

INTERNATIONAL MISSION BOARD  
**OUR CHURCH'S GOAL \$25,000**

