

ST. PAUL'S

LUTHERAN CHURCH

The Communicator

MAUMEE, OHIO

August 2025

VBS 2025

Aug. 3rd-Aug. 5th

Join us on a Journey to the True North August 3rd through August 5th from 6:00 pm to 8:30 pm

At Vacation Bible School (VBS) this year, we will be traveling to the "True North". As kids see how easy it is to lose sight of what's true in our wild world, we will be guiding them toward Jesus, our "True North". He is a faithful friend we can always trust.



We will be taking the kids on a journey through the book of Matthew to discover how Jesus is their guiding light, offering faithfulness throughout life's challenges. They will see that Jesus is always present and dependable in every situation.

"True North" is for kids from 4 years of age to 5th grade. To register, go to our website: stpaulslive.com and click on the VBS 2025 button. We look forward to seeing you there!

Happy Hearts

Please join us for Happy Hearts **Thursday, August 14th at noon meeting at the Riverview Picnic Shelter at SideCut Metropark in Maumee for a fellowship cookout.** Please look for the sign-up sheet in the Gathering Space.



Maumee Churches United Christian Unity Event This is a Family Day during the Maumee Street Fair, Saturday, August 9th, from noon to 7:00 pm at St. Paul's Lutheran Church in partnership with our Boy Scouts Troop 103, Lifewise Academy, and Maumee Churches United. Join us for a family-focused day of Fellowship with face painting, back-to-school haircuts, delicious food, and family games. Escape the hustle and bustle of the larger fair for a bit in our prayer tent with sensory activities and coloring for kids. We are also working on a live Christian Music lineup throughout the day.

More activities may arise once Ben Murray joins us, so please stay tuned to Facebook, Messenger, and the September Communicator regarding Family activities and news.

October Family Fun Night Please join us Friday, October 3rd, from 5:30 pm to 7:30 pm for dinner and a night of pumpkin painting, spooky dance party, and mask making in the Fellowship Hall. If you have other spooky season craft ideas that are easy, parent and kid-friendly, bring them along or let us know! Please sign up on our event page on Facebook or in the Gathering Space in September so we know how many pumpkins to order.

December Family Fun Night. Please join us Friday, December 5th, from 5:30 pm to 7:30 pm in the Fellowship Hall for dinner and Family Christmas activities.



Welcome Ben Murray and Family

St. Paul's is thrilled to welcome Ben and Brittany Murray and their three daughters to Toledo. Ben will be serving as our Associate Pastor and responsible for youth and family ministries. Brittany grew up here at St. Paul's and is the daughter of Melissa Green. The new installation service for our new Pastor is scheduled for Sunday, August 24th



From Pastor David

Vital Marriages

We spent July looking at the 2nd most important relationship we can have, marriage. Our point of the series was the priority of having a marriage that points each spouse, any children they may have, and those who observe them to Jesus. Everything we do and all that we are should have this same model. Are we honoring Jesus in all that we do? This means others should be able to see the Love of God in every area of our lives.

One of the major problems in marriages is abuse. Fifty years ago, we would have described abuse simply in terms of a spouse beating up their partner. It was commonly accepted that many husbands would physically assault their wives. This was even accepted in Christian communities in my lifetime. I was involved in a situation as a pastor not more than 15 years ago. Another pastor told me to leave it alone as the young man was the husband and should be free to manage his marriage as he wished to!

I have read 3 or 4 books on abuse and even joined a class for people who were in the legal system due to charges of Domestic Violence. All of the men in the class admitted to choking out a woman in their anger. It was quite an experience! And, it is not just men who abuse others; studies show women self-reporting physical violence at rates similar to or even higher than men, especially in young dating populations (Straus & Gelles, 1990; Archer, 2000).

We will not accept physical abuse of anyone in our Christian Community. God hates divorce; therefore, we do as well. But we also hate any form of abuse. No one should continue to be subjected to ungodly treatment from others, especially those they love. Abusive marriages are not vital marriages, fostering growth in the partners or demonstrating God's love to others.

It is helpful to learn more about this awful topic so we can avoid falling into this sin, and so we can help others who are either victims or offenders.

Experts list 6 categories of abusive behavior:

1. Emotional Abuse

- Constant criticism, humiliation, or name-calling
- Gaslighting (making you doubt your memory or sanity)
- Blaming you for everything
- Withholding affection as punishment
- Threats of self-harm or harm to you/others if you leave

2. Controlling Behavior

- Monitoring your phone, email, or social media
- Isolating you from friends or family
- Controlling what you wear, where you go, or who you talk to
- Making all decisions for the household
- Jealousy presented as "love" or "protection"



**Love is patient,
Love is kind.**

1 CORINTHIANS 13:4

Cont. from Pastor David

3. Physical Abuse

- Pushing, slapping, punching, choking, or restraining
 - Destroying property to intimidate
 - Blocking exits or locking you in
 - Threatening physical harm
- "Accidentally" hurting you repeatedly

4. Sexual Abuse

- Forcing sex or sexual acts without consent
 - Using guilt or manipulation to pressure you
- Dismissing your discomfort or saying you "owe" them sex

5. Financial Abuse

- Controlling all money and spending
 - Forbidding you from working or accessing bank accounts
 - Giving you an "allowance" and demanding receipts
- Threatening to leave you with nothing

6. Spiritual Abuse

- Twisting Scripture to justify control or silence
 - Claiming that submission means blind obedience
- Using religious guilt to prevent leaving or seeking help

What about the abuser?

Jesus often used a story to communicate a truth.
Here is one relevant to this issue:

"If a man has a hundred sheep, and one of them has gone astray, does he not leave the ninety-nine on the mountains and go in search of the one that went astray? And if he finds it, truly, I say to you, he rejoices over it more than over the ninety-nine that never went astray. So it is not the will of my Father who is in heaven that one of these little ones should perish."

Matthew 18:12-14

I believe He cares for even the abuser deeply. **No one** is beyond the grace of God. This is especially true when we understand that most abusers were also victims. So, I am sure He pursues abusers as well as comforts victims. The abusers are like the one sheep who has gone astray. However, due to the nature of abuse, it is unwise to casually excuse their behavior or trust them without some profound signs of repentance and changed behaviors.

There are some productive materials available to help those who have been violent or otherwise abusive. Bringing this type of behavior into submission to Christ involves a long-term process and the help of others who are both dedicated and trained. If you know anyone who wishes to stop abusing others, please connect them to me (with permission).

If only we could reach the hearts of one or two in our church family (or even Mosaic) who need help. People are so hesitant to share personal problems (admit them and ask for help) but here we are, a lovable pastor (soon to be two) and a congregation who shares God's love with one another - but just like AA, you have to take your own inventory and then have the energy to be honest with yourself!

It is NOT the will of the Father that even dangerous humans are left to perish alone. May God deliver us from dangerous or abusive marriages and the desire to rule over others.

Love...

*always protects,
always trusts,
always hopes,
always perseveres.*

1 Corinthians 13:6,7



LifeWise Academy News



BIBLE BASED CHARACTER EDUCATION

The LifeWise Academy mission is "to positively impact students, schools and communities by providing a Bible-based, character-focused released time religious instruction program."

Released time is a legal program by which religious instruction is accessible to public school students during the school day, allowing them to leave school (with parental permission) to attend off-site classes which are both academic and religious in nature.

Who Benefits



Students

Students receive a practical Bible-based education for the betterment of their academics and character. Independent research has documented that students participating in released time programs do better academically (GPA) and have fewer behavioral problems than those students who do not participate.



Schools

Schools see improved academic performance, mental health and classroom behavior. Public schools with a local released time program can attract families who may opt out of public education for lack of religious instruction.



Communities

Communities benefit from the investment in creating a generation of citizens with stronger morals and character.

How It Works

We Keep It Legal

LifeWise Academy is keenly aware of the necessity to keep public and religious institutions separate. We diligently adhere to relevant laws and policies, namely, the maintenance of a program that is: privately funded, off school property and parent-permitted.

1

We Keep It Simple

LifeWise focuses on the central messages of the Bible. We avoid getting bogged down in the finer points of religious doctrine. Instead, we focus on foundational themes that speak to the issues common to all people.

2

We Keep It Practical

LifeWise Academy seeks to create real and lasting change for students, schools and communities, so we continually look for ways to make instruction not only conceptual, but also actionable.

3

Public Schools & LifeWise

While schools cannot officially encourage or discourage students' participation in released time classes, administrators are welcome to cooperate with LifeWise Academy personnel to optimize class schedules, distribute and collect parent permission slips, coordinate transportation and discuss other matters to ensure a successful and impactful program.

Lifewise Academy is coming to Maumee in late 2025 or early 2026 and will be using our building during the week to conduct their classes. More details to come as they are in the process of finding a program director and figuring out other logistics to get the program up and running.

More details to come as progress is made on getting the program started.

What is Lifewise?

Lifewise is Character based Bible Education. Independent research suggests that students participating in Religious Instruction Time Release programs do better academically and have fewer behavioral problems than those students who do not participate. LifeWise focuses on the central messages of the Bible, avoiding the finer points to keep it non-denominational and focus on the foundational themes common to all people.

Thank You From the Family MAT

Thank you to all the volunteers that made Family Night possible! A special thanks to Justin Olman, Kelly Kaiser, Russ Leggett, Beth Condon, Patrice Girardot, Linda and Jason Scott, Mike Young, and Leonard Windom. Please stop by for our next family event, the Maumee Churches United Christian Unity event on Saturday, August 9th from noon to 7:00 pm. This event will be family-focused with family activities, food, a youth group fundraiser, Christian music, a prayer tent, and quiet sensory activities. If you can't volunteer but want to get involved please consider donating pop or water to the youth group to sell as a fundraiser for upcoming youth events.



Memorials

Nathan Smith in memory of Jeanne Lohse.

Nathan Smith in memory of Laurie Lepper

Altar Flower Dates Available

There are still dates available in August for flowers: August 17th, 24th, and 31st. If you are interest in placing flowers on the altar on those dates, please contact the church office at 419-893-0205. As a reminder, the cost is \$20.00



?? Bible Quiz ??

What was the name of the wealthy merchant of purple cloth who met Paul and his companions, was baptized and became a leader in the Philippian church?

- A. Priscilla
- B. Lydia
- C. Dorcas
- D. Joanna



Answer: B (See Acts 16:11-15, 40.)

Thank You

Our Baby University program teachers, parents, the best practices in raising children ready to learn. Thank you for helping them have the best start possible.

~David Kaiser

Welcome to God's Family

Welcome to God's Family, Myla, Jax, Jayden, and Jessie.



Youth Group

The Youth Group raised over \$600 during their carwash on July 20th for their upcoming activities.

The Youth Group will be holding a fundraiser for water and pop during the Maumee Churches United Christian Unity Event on Saturday, August 9th from noon to 7:00 pm. If you can't participate in the Christian Unity Event please consider donating water or pop for the Youth Group to use in their fundraising efforts to support their upcoming activities.



Bibles and Prayers

On August 31st at the 10:30 am service, we are bringing back a St. Paul's tradition. We will be recognizing a few of our youth as they transition from our Children's Ministry to our Youth Ministry. At this time we will be giving them Bibles to help them in their faith journey.

On that Sunday we will also be starting a new tradition. We will be praying over our St. Paul's kids as well as kids in our neighborhood. That they will have a safe and successful school year.



OUR MISSION:

Providing local outreach opportunities for individuals by caring for the needs of others.

Outreach M.A.T. Co-Directors: Sue Schad (419-893-2330), Beth Heisey, Carol Doerfler & Linda Scott with the St. Paul's church family.

News from the Outreach M.A.T.

"Showing God's Love Through You"

Check out the slides, weekly bulletin, weekly email, our church's Facebook page, and the monthly *Communicator* for news on ministries that are happening at St. Paul's and how you can help!

You CAN make a difference!

Outreach MAT Ministry Assistance Extension Number

The voicemail extension for all Outreach Board ministry assistance is extension 220. Call the church number (419-893-0205) then dial 220. The Outreach MAT schedules food pantry appointments as well as providing monetary assistance with rent, utilities, and other needs.

Looking ahead:

- Backpack collection deadline is Sunday, August 3rd
- July 4th Parking Lot thank you.
- Maumee School Supplies Collection—Sunday, July 6th-August 3rd.
- "Simply Give" (fundraiser through Maumee Meijers) continuing through September 27th

Continues from Column 1

July 3rd Parking Lot Fund-raiser

The Outreach MAT would like to thank everyone who helped make this fundraiser so successful, whether you reserved a space or just parked in the lot or whether you were one of the many volunteers who manned the lot. We never know what the day will bring in terms of weather or interesting situations, but we want to thank Mike Culling, Jan and Dennis Schell, Len Windom, Helen Gilbert, Chris and Gene Davidson, Karen Scribner, Dave Grieger, Jacci Zaenger, Sue Schad, Carol Doerfler, Kara, Scott, Elaina, Elora, Ella, Jaxen, Jace, and Emelia Valare for "going with the flow" and making the whole 12 hour day one filled with laughter and fun. We also would like to thank the scouts and leaders from St. Paul's troop #103 for putting up and taking down the tent and bringing out the tables and chairs and the folks at the Maumee Mirror, especially Mike McCarthy for doing our fantastic ads in the paper. We made \$2,280 which will help us help Sparrow's Nest and the Bethany House. We love doing ministry with you all!

July 4th Holiday Food Baskets

The July 4th Holiday food baskets were picked up or delivered and eaten by our 60 families, and we celebrated the 249th birthday of the United States as well. Many thanks to the volunteers who made everything flow so smoothly: George Brenner, Russ and Lisa Leggett, Tyler Leggett, Dave Grieger, Bettie Barrett, Eric Smith, Denise Wolfe, Sheryl Moses, Becky and Abe Diaz, Jim Brown, Sue Schad, Gayle Lohrbach, Kara, Ella, Elora, and Jace Valare. It was a great way to spend time with church family while helping others!

Continues from Column 2

Maumee School Supplies Collection Project

The Outreach MAT and St. Paul's members are partnering with Maumee Schools this year to provide basic school supplies for some of their students.

The bagged supplies are collected by St.

Paul's then distributed by the school counselors to the students to help them begin the school year.

Because of your generosity last year, we were able to help about 70 children (about 3 classrooms of children!!) begin the school year like their classmates.

This year the collection will begin on Sunday, July 6th and the deadline for school supplies will be on Sunday, August 3rd.

Back Pack Collection (deadline Sunday, August 3rd)

We are collecting new and gently used backpacks for students in Maumee schools. We would like you to think about donating slightly used or new back packs to add to our collection. We will send the backpacks along with the school supplies we collect in July to give out to Maumee Schools for struggling families with school aged children. If you would like to help with this ministry, look for the backpack box in the Gathering Space to place the backpacks.



Continues from Column 1

“Simply Give” (June 29-September 27 th)

This program, that helps stock our “God’s Storehouse” food pantry, is continuing and is sponsored by Meijers in Maumee on

Conant Street Sunday, June 29 through Saturday, September 27th. It’s as easy as 1,2,3.

1. Pick up a red/blue “Simply Give” card from the box in the Gathering Space OR from a kiosk near the check out lines at Meijers.

2. Keep the card with you when you shop at Meijers and present it to the cashier.

3. He/she will add your \$10 donation to your shopping total. That’s it! Your \$10 donation will be tallied.

On Saturday, August 16 and again on Saturday, September 13th,

there will be a Double Match Day. For every \$10 Simply Give card

purchased on the Double Match Day, Meijers will provide an additional contribution of \$20, bringing the total to \$30 for a single customer purchase. At the end of the program, St. Paul’s

will be given your monetary donations in the form of gift cards

which we can use to restock the God’s Storehouse. The Outreach

MAT would like to thank you, in advance, for helping others by your generosity!



Continues from Column 3

Baby University Baby University ministers to families in Toledo’s Old South End. They are collecting children’s books especially board books. As a congregation, we can help them achieve their mission by providing them with books. There will be a collection container in the Gathering Space for books. Thank you for helping this important, but vulnerable part of our population.

Halos of Hope Many thanks to the ladies who are knitting and crocheting chemo caps for this ministry. We have made over 3,600 caps since this ministry started! We are making a difference!



The ministry uses volunteers to knit caps for individuals under going cancer treatment. If you knit or crochet and would like to use your gift to help others, please contact Sue Schad for more information about this exciting opportunity to make a difference.

Ronald McDonald House pull tab ministry:

The Outreach MAT is asking you to save pull tabs from aluminum cans including soup and vegetable cans and pet food cans to support the mission of Ronald McDonald House Charities. RMHC recycles the tabs to supplement the food budget that provides meals to families during their stay, at no cost to them. There is a container in the Gathering Space as well as in the Fellowship Hall.



Continues from Column 4

God’s Storehouse (St. Paul’s Food Pantry)

God’s Storehouse, our food pantry, is St. Paul Lutheran’s “hand up” for families in the area who are struggling to make ends meet in these difficult times.

God’s Storehouse August Shopping List:

Pop Tarts, small cans chicken dill pickles, canned chicken, canned pasta (like beefaroni), Bisquick, diced tomatoes, grape and strawberry jelly, mandarin oranges, mustard, mayonnaise, any kind of Jiffy mix, crackers, relish, waxed beans, beets, green beans, peas, mayonnaise, crushed or chunk pineapple, boxed mashed potatoes, Hamburger Helper or Tuna Helper, before chicken ramen noodles, chocolate or vanilla frosting

If you are shopping and think of it, buy two and donate one to God’s Storehouse. We thank you, in advance, for your generosity!



The King will reply, “I tell you the truth, whatever you did for one of the least of those brothers and sisters of mine, you did for Me.”

(Mathew 25:40)

SERVANT
QUILTING SINGING
TRANSPORTATION ALTAR
THANK YOU GUILD
SUNDAY SCHOOL TEACHER ACOLYTE
LEADER
SERVING OTHERS
YES TEAMWORK
READER
GIVE
VOLUNTEER
YOU USHERING GREETING
WORKING TOGETHER BEING AVAILABLE
THE HEART OF EVERY CHURCH EVERY WHERE
ANSWERING THE CALL
GOD’S WORK. OUR HANDS
STEPPING UP
ASSEMBLING SCHOOL KITS
DISCIPLESHIP
FOOD PANTRY
THANK YOU FOR SAYING YES

M.A.T. Spotlight



OUTREACH MINISTRY

We're caring for the needs of others.

The mission of St. Paul's Outreach is to offer a means by which St. Paul's may be Christ's witness to the world by caring for the needs of individuals and families in our cities.

Do You Have The Heart For Helping Those In Need?

Would you like to help us in God's Storehouse/Pantry for those in need? Could you be a Food Pantry Assistant? Could you help assemble Holiday Food baskets 4 times a year? Would you be able to deliver food baskets?

Serve dinner at Mosaic, an outreach center for the community in the Old South end, along with Fellowship MAT? Helping families by watching their children while parents participate in an education class with Baby University at Mosaic Ministries?

Help with parking lot fundraisers? 4th of July, Garage sale, Maumee Street fair? Could you assist us with organizing drives with backpacks & school supplies for needy kids or help with the Angel Tree?

Did you say **YES** to any of the above? Do you feel nudged by the Lord? If so, please complete & drop it off in the offering plate by the Sanctuary doors and one of the Outreach MAT Leaders, Sue Schad or Linda Scott, will reach out to you.

Name: _____

Email: _____

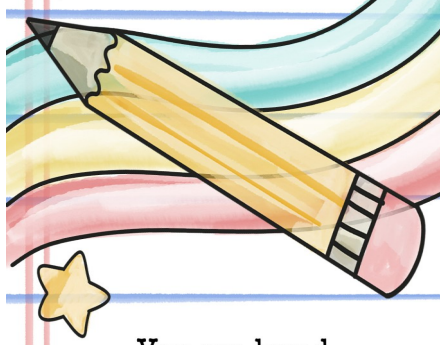
Phone: _____

Gathering Space Update

Before and after pictures of the new carpet in the Gathering Space. thank you for the carpet installation, wonderful job! Thank you to all the volunteers and donors who have put in the work and the donations to make the Gathering Space update possible!



★ BACKPACK BLESSING ★



You are loved,
you are brave,
and you are
never alone. ★

Joshua 1:9

Office Hours

- ◇ Mon—Wed: 8:00 am—2:00 pm
- ◇ Thurs—Fri: 8:00 am—12:00pm

As always we can be reached by email at Hubi (hhsmith@stpaulslive.org) & Sue smhardn@stpaulslive.org). If you have information for the "Messenger" or the "Communicator" please send it to officeinfo@stpaulslive.org.

If there is an emergency outside of our office hours, please call Pastor David at 419-270-2582.

David is trying to meet with each St. Paul's member.

Please let him know if you can schedule a breakfast or lunch together.

Men's Bible Study and Prayer Group has planned meetings

The Paul's Lutheran Church Men's Bible Study and Prayer Group.

Exploring God's word together allows our men's group to learn and grow with one another, to be challenged and encourage one another to live for something larger than ourselves.

We meet every first and third Saturday.

Please bring your Bible. We will look forward to having you join us.



Be **KIND.**
EPHESIANS 4:32, NIV

SERVE
others.
1 PETER 4:10, NIV

HONOR
Christ *the* Lord.
1 PETER 3:15, ESV

Back to
School





THE POWER OF PRAYER BOX

Create a simple and meaningful prayer box your family can use to share requests and pray together all week long.

What you need:

- Shoebox with lid
- Wrapping paper or decorative paper
- Scissors & tape
- Markers or crayons
- Stickers and other craft material (optional)
- Pens or pencils
- Index cards or small pieces of paper

What you do:

1. Wrap the shoebox like a gift, wrapping the lid separately so it can be opened.
2. As a family, decorate the box with drawings, favorite Bible verses, photos, or stickers.
3. Place the box somewhere central, like the kitchen or living room.
4. Keep index cards and pens nearby. When someone has a prayer request, they can write or draw it and drop it in.
5. Throughout the week, take turns praying over the requests as a family, or have a parent lead prayer time.

Devote yourselves to prayer, being watchful and thankful.
—Colossians 4:2, NIV



The Communicator
is published monthly by

St. Paul's Lutheran Church
112 E. Wayne Street
Maumee, Ohio 43537

Ph: 419-893-0205

Web Site: www.stpaulslive.com
Facebook: facebook.com/Stpaulslive
Instagram: [st_pauls_live](https://instagram/st_pauls_live)

In the event of an emergency
and it's after hours, you may reach Pastor
David at **419-270-2582**.

Office Hours:
Mon—Wed: 8:00 am - 2:00 pm
Thurs—Fri: 8:00 am - 12:00 pm

Pastoral Staff:

David N. Kaiser
dnkaiser@stpaulslive.org

Sunday Schedule:

8:30 am Traditional Service (drive-in &
in-Sanctuary)

10:30 am Modern Service (drive-in &
in-Sanctuary)

Everyone is welcome!

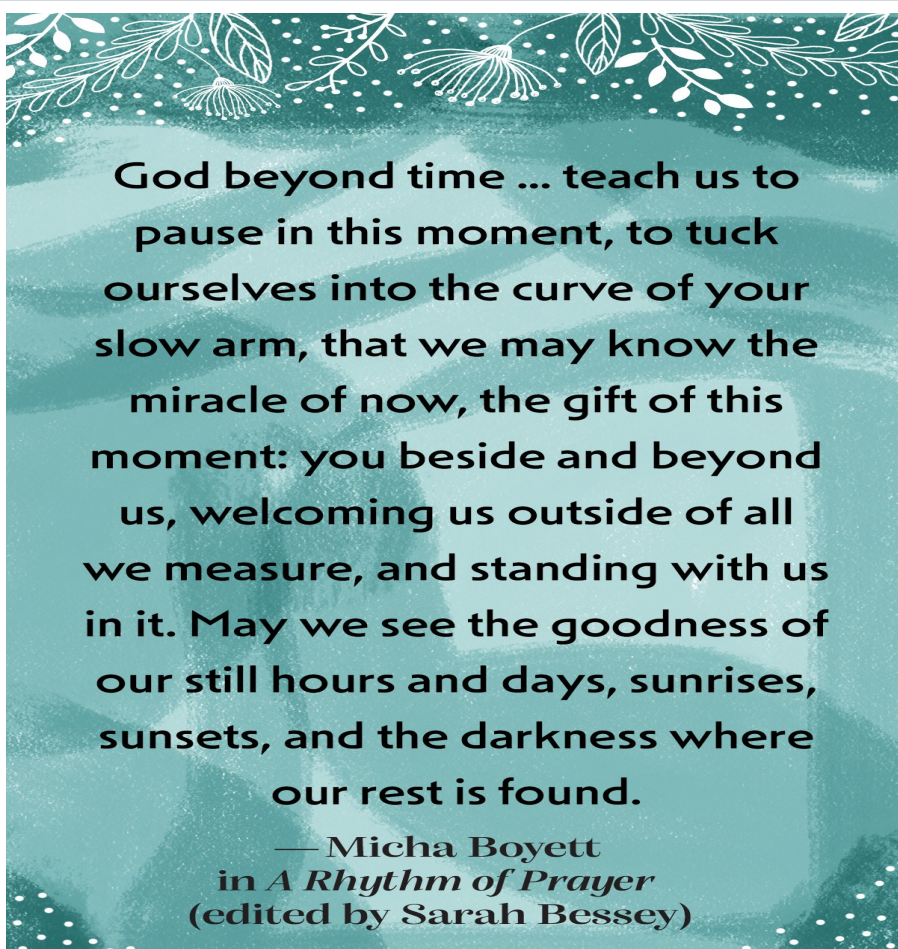
Trustees:

Gary Yunker—President
Linda Scott—Vice President
Timothy Callahan—Treasurer
Marcia Culling—Secretary

COMMUNICATOR
DEADLINE

As a reminder, the deadline for the Communicator is the 15th of the month at 8:00 am. IF the 15th is on a weekend, the deadline is the following Monday at 8:00 am. Submissions for repeated printing must be earmarked with the specific publication dates.

Editor reserves the right to edit for content and space. Thank you so much for meeting the deadline! **Email Hubi at officeinfo@stpaulslive.org** with submissions.



Your old glasses can give new life

Millions in developing nations lack access to basic eye care services. The Lions Club has recognized the urgent need for corrective lenses and continues to lend their support.

If you have old eye glasses that you are no longer using, please bring them to the church, drop them off in the basket on the counter by the Outreach Board and we will recycle them through the Lion's Club. Questions? Contact Gary Langenderfer.

Give us a call

Please call the church office (419-893-0205) if you or a family member are (or are scheduled to be) hospitalized, have recently moved to an assisted living facility or nursing home, become a shut-in, desire home communion or would appreciate a home visit due to health problems.

Hospitals and care facilities no longer provide us with this information and it's important so that our pastor, prayer groups, and congregation are able to provide the necessary spiritual support when and where it is needed. Please help us minister to you and your loved ones.

Who We Are

We believe that God is willing and able to do more than we can ask, think or imagine. We believe that He has positioned us to fulfill our calling to reach out into Maumee, Toledo, and the nations with His love.

We are a Bible-based, caring church family that desires to grow in Christian faith. As a congregation, our most earnest desire, programming and efforts are focused toward reaching out to the world with the great news of salvation found in Jesus Christ. And we would like to reach out to you too.

If you do not have a church home, and if you are searching for a warm, welcoming place to learn, grow, and invest your time and talents, please consider worshipping with us.

Mission & Vision

ST. PAUL’S MISSION:

In response to Christ’s great commission to share the Gospel with the whole world, St. Paul’s Lutheran Church is called to make disciples by connecting the unconnected to Jesus Christ and together growing in full devotion to Him.

ST. PAUL’S VISION:

Do L.I.F.E: Love. Inspire. Forgive. Encourage. L.I.F.E: The building blocks of authentic, Christ-centered community.

Prepared Especially For:

Non-Profit Org.
US Postage
PAID
Maumee, OH
Permit No. 74

St. Paul’s Lutheran Church
112 E. Wayne Street
Maumee, Ohio 43537
Address Service Requested