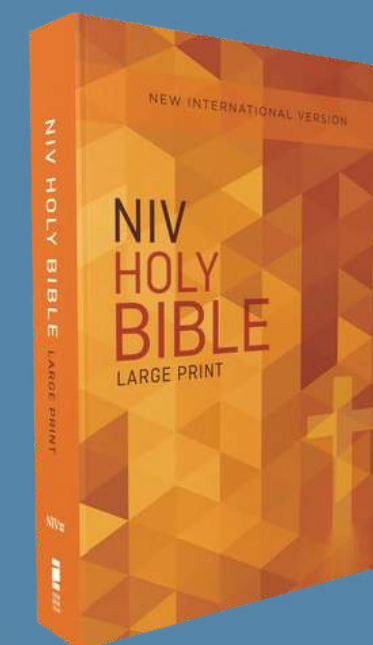




A FRUITFUL LIFE

the gospel of

LUKE



**PAGE
965**

LUKE 6:43-49

**PASTOR CHRISTIAN KAH
& RANDY BRAINARD**

18 JANUARY 2026

PART ONE

LUKE 6:43-45

LUKE 6:43-45

“No good tree bears bad fruit, nor does a bad tree bear good fruit. Each tree is recognized by its own fruit. People do not pick figs from thornbushes, or grapes from briars. A good man brings good things out of the good stored up in his heart, and an evil man brings evil things out of the evil stored up in his heart. For the mouth speaks what the heart is full of.”



1

Evaluate our fruit

**"FOLLOW GOD'S EXAMPLE,
THEREFORE, AS DEARLY
LOVED CHILDREN AND WALK
IN THE WAY OF LOVE, JUST
AS CHRIST LOVED US AND
GAVE HIMSELF UP FOR US
AS A FRAGRANT OFFERING
AND SACRIFICE TO GOD."**

EPHESIANS 5:1-2

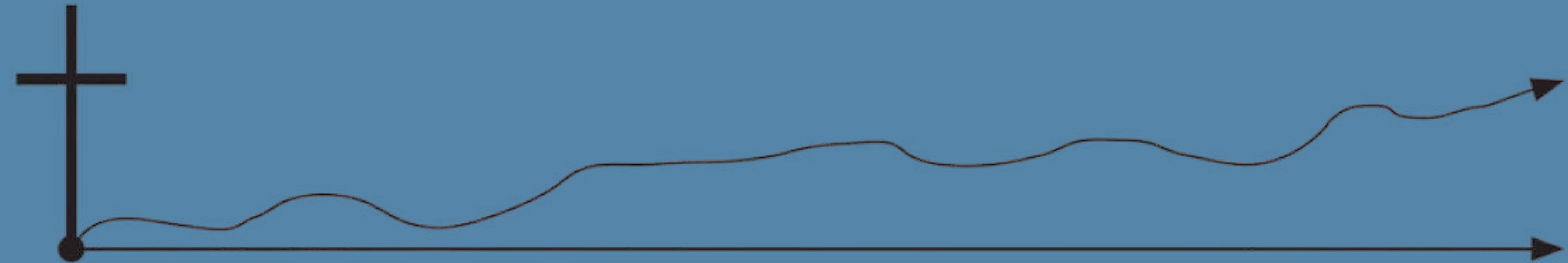




"BUT THE FRUIT OF THE SPIRIT IS LOVE, JOY, PEACE, PATIENCE, KINDNESS, GOODNESS, FAITHFULNESS, GENTLENESS AND SELF-CONTROL."

GALATIANS 5:22-23

PROGRESSIVE SANTIFICATION



LUKE 6:45

“A good man brings good things out of the good stored up in his heart, and an evil man brings evil things out of the evil stored up in his heart. For the mouth speaks what the heart is full of.”

2

**What am I
storing up in my
heart?**

“WHEN THE BIBLE USES THE TERM HEART, IT MEANS THE CAUSAL CORE OF YOUR PERSONHOOD. THE HEART IS YOUR DIRECTIONAL SYSTEM. THE HEART IS YOUR STEERING WHEEL. YOUR BEHAVIOR ISN’T CAUSED BY THE SITUATIONS AND RELATIONSHIPS OUTSIDE OF YOU. THIS PASSAGE TEACHES THAT YOUR EXPERIENCES INFLUENCE, BUT DO NOT DETERMINE, YOUR BEHAVIOR. YOUR BEHAVIOR IS SHAPED AND CAUSED BY HOW YOUR HEART REACTS TO AND INTERACTS WITH THE SITUATIONS AND RELATIONSHIPS THAT ARE OUTSIDE OF YOU.

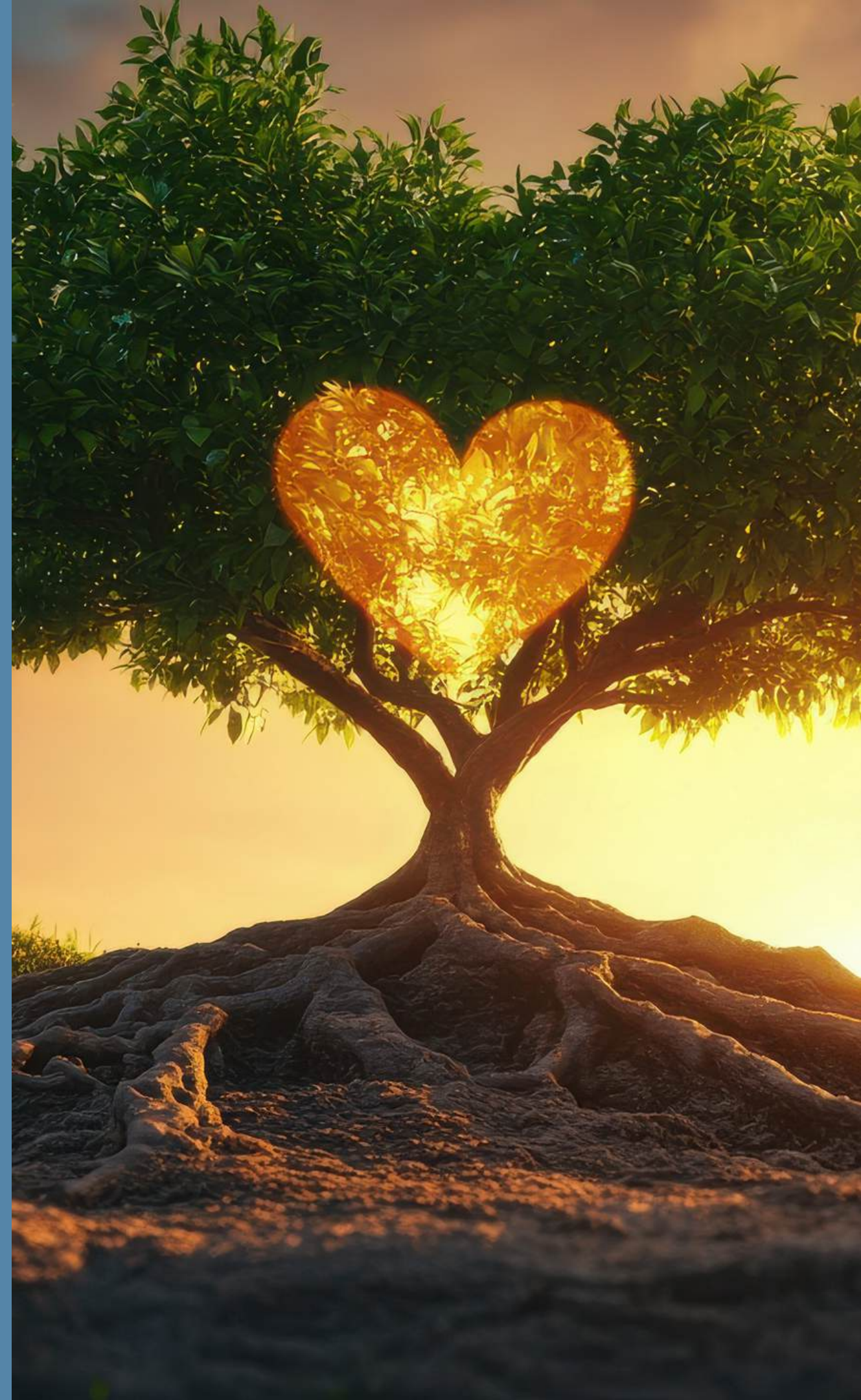


JESUS USES A WONDERFUL EXAMPLE IN THE LUKE PASSAGE. HE SAYS IT IS “OUT OF THE ABUNDANCE OF THE HEART HIS MOUTH SPEAKS” (VERSE 45). LET THIS SINK IN FOR A MOMENT. I AM CONVINCED THAT YOU AND I DON’T WANT TO BELIEVE THAT. HAVE YOU EVER SAID TO SOMEONE, “OH, I DIDN’T MEAN TO SAY THAT”? IT WOULD BE MORE BIBLICAL TO SAY, “PLEASE, FORGIVE ME FOR SAYING WHAT I MEANT,” BECAUSE IF IT HADN’T FIRST BEEN IN YOUR HEART, IT WOULDN’T HAVE COME OUT OF YOUR MOUTH.



CHRIST USES A WONDERFUL EXAMPLE TO DRIVE THIS REALITY HOME. IT'S THE EXAMPLE OF A TREE. WHAT'S THE BEST WAY TO RECOGNIZE AN APPLE TREE? WELL, IT'S OBVIOUS — APPLES. BUT WHEN YOU LOOK AT THOSE APPLES, YOU INSTINCTIVELY KNOW THAT THE TREE YOU'RE LOOKING AT IS APPLE-ISTIC ALL THE WAY DOWN TO ITS ROOTS. IF THERE WASN'T APPLE-ISM IN ITS ROOTS, IT WOULDN'T GROW APPLES AS FRUIT. YOU WILL NEVER, EVER PLANT PEACH PITS AND GET APPLES. NOW, DON'T MISS THE PROFOUND POINT THAT CHRIST IS MAKING HERE. HE IS TEACHING THE PRINCIPLE OF ORGANIC CONSISTENCY. THERE IS AN ORGANIC CONSISTENCY BETWEEN WHAT'S IN OUR HEARTS AND WHAT COMES OUT OF OUR MOUTHS."

– PAUL DAVID TRIPP



"FINALLY, BROTHERS AND SISTERS, WHATEVER IS TRUE, WHATEVER IS NOBLE, WHATEVER IS RIGHT, WHATEVER IS PURE, WHATEVER IS LOVELY, WHATEVER IS ADMIRABLE—IF ANYTHING IS EXCELLENT OR PRAISEWORTHY—THINK ABOUT SUCH THINGS."

PHILIPPIANS 4:8





**"THE HEART IS DECEITFUL
ABOVE ALL THINGS AND
BEYOND CURE. WHO CAN
UNDERSTAND IT?"**

JEREMIAH 17:9

EZEKIEL 36:26

“I will give you a new heart and put a new spirit in you; I will remove from you your heart of stone and give you a heart of flesh.”



**Remember and
live in the gospel
of Grace**

"FOR IT IS BY GRACE YOU HAVE BEEN SAVED, THROUGH FAITH—AND THIS IS NOT FROM YOURSELVES, IT IS THE GIFT OF GOD—NOT BY WORKS, SO THAT NO ONE CAN BOAST."

EPHESIANS 2:8–9



JOHN 15:4-5

“Remain in me, as I also remain in you. No branch can bear fruit by itself; it must remain in the vine. Neither can you bear fruit unless you remain in me. “I am the vine; you are the branches. If you remain in me and I in you, you will bear much fruit; apart from me you can do nothing.”



**EVALUATE
OUR FRUIT**

1

2



**WHAT AM I
STORING UP
IN MY
HEART?**



**REMEMBER
AND LIVE IN
THE GOSPEL
OF GRACE**

3

PART TWO

LUKE 6:46-49

TWO WAYS TO RESPOND TO JESUS

**Whoever hears my
words and obeys
will be secure**



TWO WAYS TO RESPOND TO JESUS

**Whoever hears my
words and does
NOT obey will be
utterly destroyed**



WHY DO YOU CALL ME 'LORD, LORD?'

**WHAT DOES
THAT MEAN TO
YOU?**

**IS IT ABOUT
WHO I AM?**

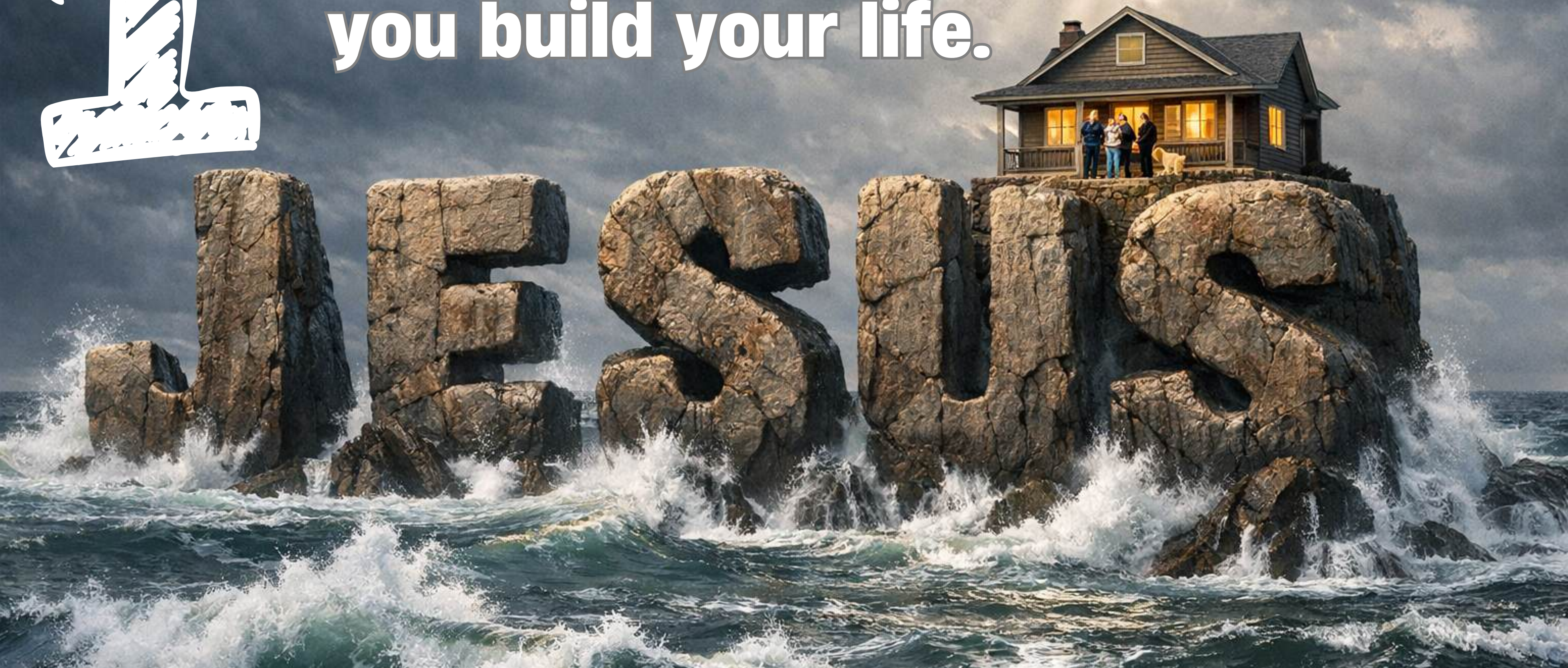
**IS IT ABOUT
WHO I AM TO
YOU?**

**Why do you call me
"Κύριε κύριε," and do
not do what I say?**

**Κύριος: position of authority (lord,
master), one in charge, the divine
God.**

1

Make Jesus Christ your firm foundation! The rock in which you build your life.



If you declare with your mouth, "Jesus is Lord (κύριε)," and believe in your heart that God raised him from the dead, you will be saved.

Romans 10:9



2

**Are you
hearing and
obeying the
one you call
"Lord?"**





**What is the Lord
calling you to obey
in this season of
life? What is the
promise if you obey?
What is at stake if
you do not obey?**





THE GOSPEL OF LUKE

HomeGroup Questions

1. What does Jesus mean when He says, “Each tree is recognized by its own fruit”? How does this apply to our daily lives?
2. Why is it often easier to evaluate others’ words and actions than our own? How can we cultivate humility in self-assessment?
3. What role does the heart play in shaping our behavior, according to Luke 6:45? How does this challenge common excuses for our actions?
4. Why is trying harder not the solution to producing good fruit? How does this truth point us back to the gospel of grace?
5. How does abiding in Christ (John 15:4–5) practically look in your life? What habits help you remain connected to the Vine?
6. Re-read Luke 6:43-49 and read a similar teaching from Matthew 7:15-27.
7. Discuss similarities and differences.
8. What is the relationship between hearing and obeying?
9. Is the Lord calling you to obey anything in this season of life?
10. Has that been difficult? What makes obeying in this area hard?
11. How can you obey and trust the promises of God?