



© 2007, DAVID R. MANGO, ALL RIGHTS RESERVED

Plan #07-2349



© David R. Mango Design Group, Inc.
www.davidmangodesign.com

David R. Mango Design Group, Inc. is the sole owner of this COPYRIGHTED design and reserves the right to make modifications to design without notice. Any reproduction of this design in whole or in part without the written consent of DRM Design Group, is prohibited. This design is protected under Federal Copyright Laws.



© 2007, DAVID R. MANGO, ALL RIGHTS RESERVED

rear elevation

Plan #07-2349

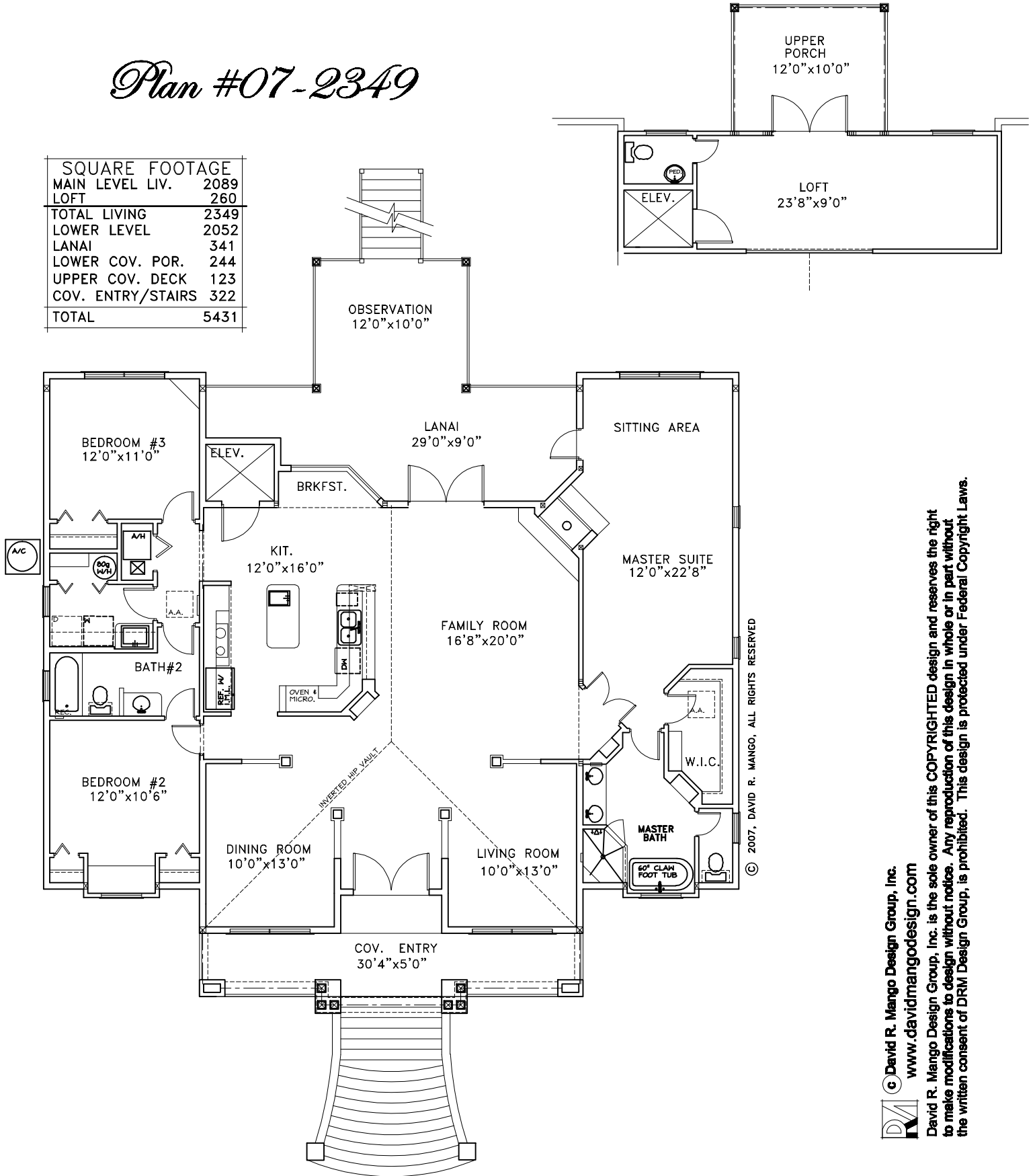


© David R. Mango Design Group, Inc.
www.davidmangodesign.com

David R. Mango Design Group, Inc. is the sole owner of this COPYRIGHTED design and reserves the right to make modifications to design without notice. Any reproduction of this design in whole or in part without the written consent of DRM Design Group, is prohibited. This design is protected under Federal Copyright Laws.

Plan #07-2349

SQUARE FOOTAGE	
MAIN LEVEL LIV.	2089
LOFT	260
TOTAL LIVING	2349
LOWER LEVEL	2052
LANAI	341
LOWER COV. POR.	244
UPPER COV. DECK	123
COV. ENTRY/STAIRS	322
TOTAL	5431



© 2007, DAVID R. MANGO, ALL RIGHTS RESERVED

David R. Mango Design Group, Inc.
www.davidmangodesign.com

David R. Mango Design Group, Inc. is the sole owner of this COPYRIGHTED design and reserves the right to make modifications to design without notice. Any reproduction of this design in whole or in part without the written consent of DRM Design Group, is prohibited. This design is protected under Federal Copyright Laws.