



© 1998, 2003, DAVID R. MANGO, ALL RIGHTS RESERVED

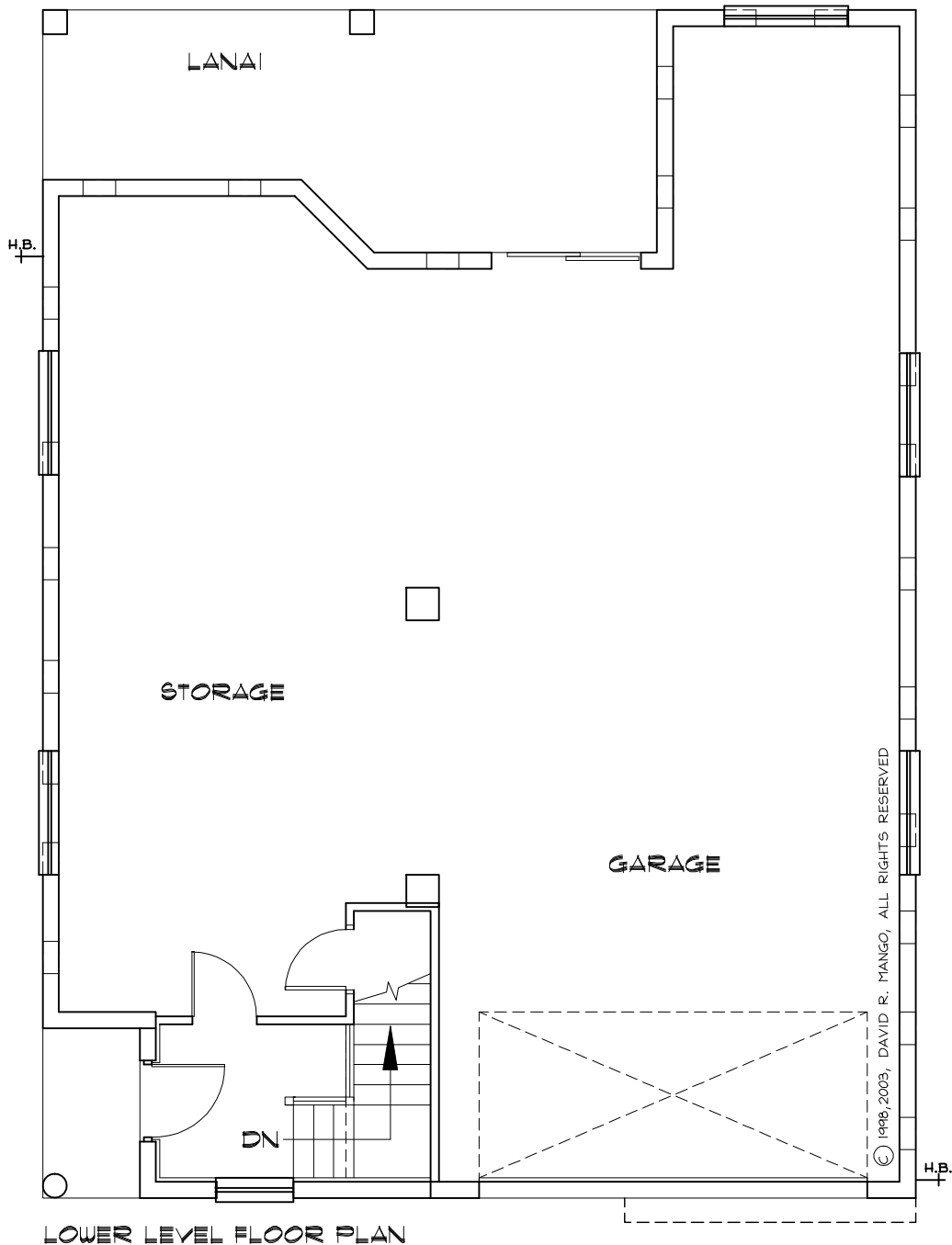


© David R. Mango Design Group, Inc.
www.davidmangodesign.com

David R. Mango Design Group, Inc. is the sole owner of this COPYRIGHTED design and reserves the right to make modifications to design without notice. Any reproduction of this design in whole or in part without the written consent of DRM Design Group, is prohibited. This design is protected under Federal Copyright Laws.

Plan # 03-1494

Plan # 03-1494



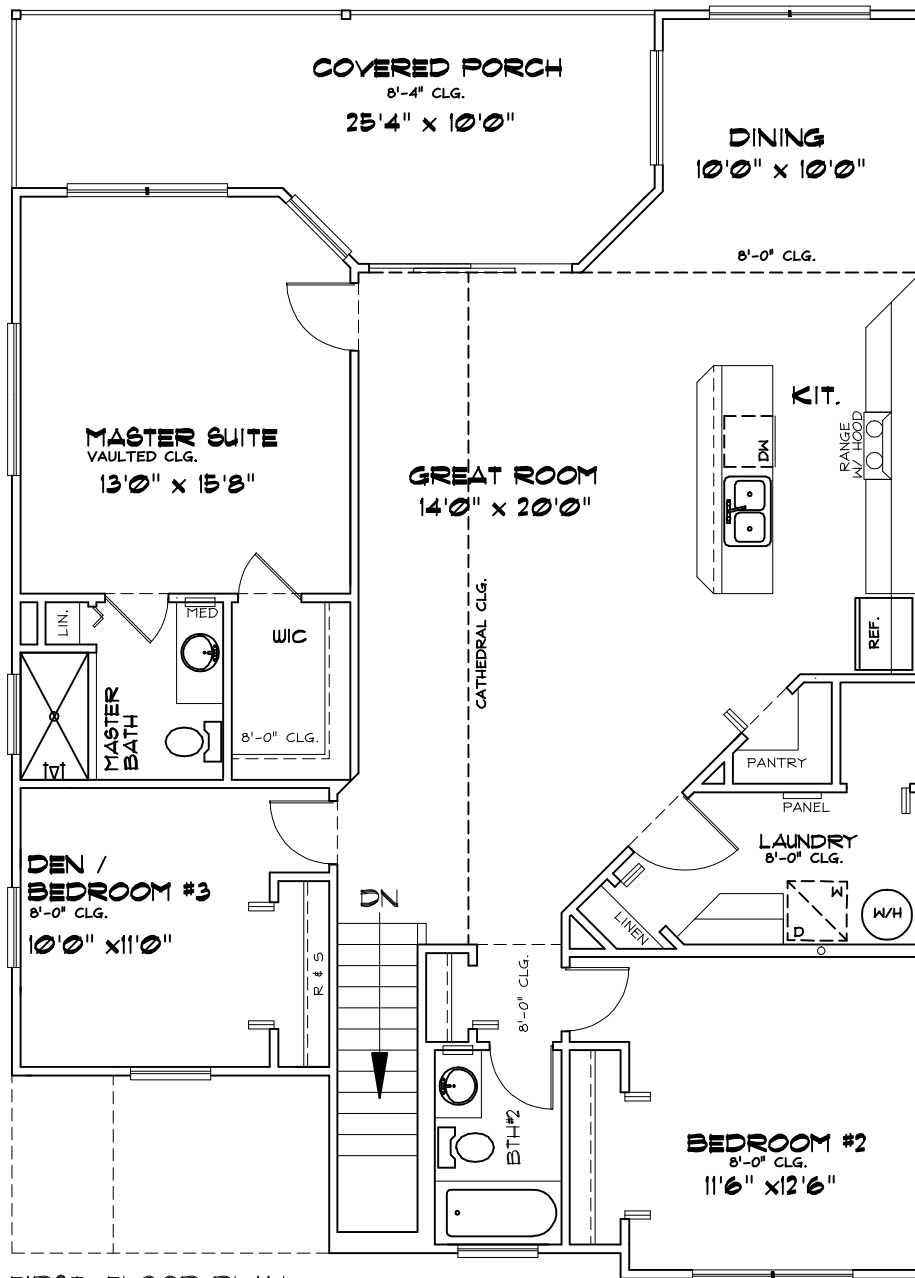
© David R. Mango Design Group, Inc.
www.davidmangodesign.com

David R. Mango Design Group, Inc. is the sole owner of this COPYRIGHTED design and reserves the right to make modifications to design without notice. Any reproduction of this design in whole or in part without the written consent of DRM Design Group, is prohibited. This design is protected under Federal Copyright Laws.

Plan # 03-1494

SQUARE FOOTAGE

LIVING	1494
LOWER LEVEL	1520
LANAI	217
COV. ENTRY	28
TOTAL	3260



FIRST FLOOR PLAN


 © David R. Mango Design Group, Inc.
www.davidmangodesign.com

David R. Mango Design Group, Inc. is the sole owner of this COPYRIGHTED design and reserves the right to make modifications to design without notice. Any reproduction of this design in whole or in part without the written consent of DRM Design Group, is prohibited. This design is protected under Federal Copyright Laws.

© 1998, 2003, DAVID R. MANGO, ALL RIGHTS RESERVED