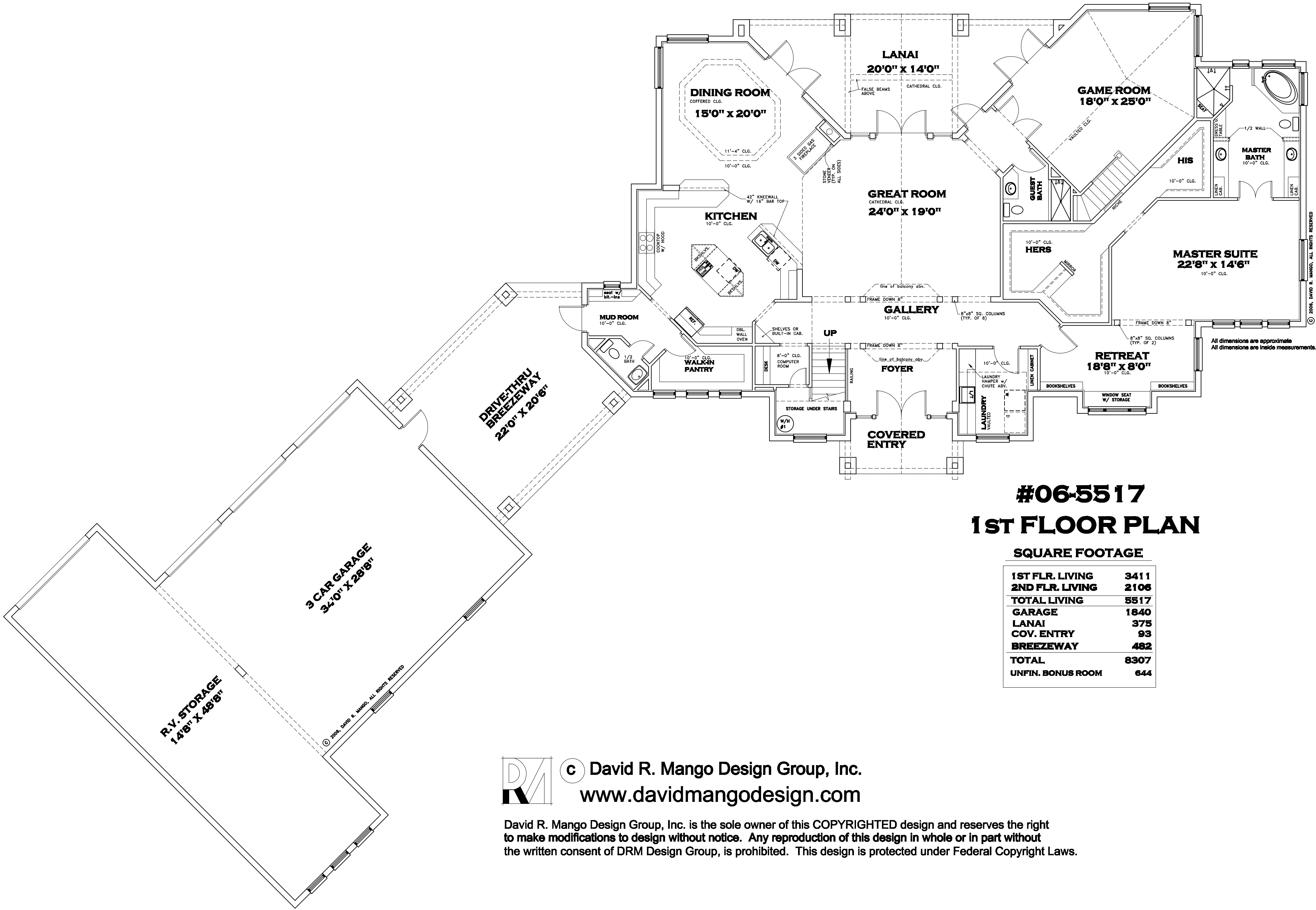




© David R. Mango Design Group, Inc.
www.davidmangodesign.com

David R. Mango Design Group, Inc. is the sole owner of this COPYRIGHTED design and reserves the right to make modifications to design without notice. Any reproduction of this design in whole or in part without the written consent of DRM Design Group, is prohibited. This design is protected under Federal Copyright Laws.

Plan # 06-5517



#06-5517 1ST FLOOR PLAN

SQUARE FOOTAGE

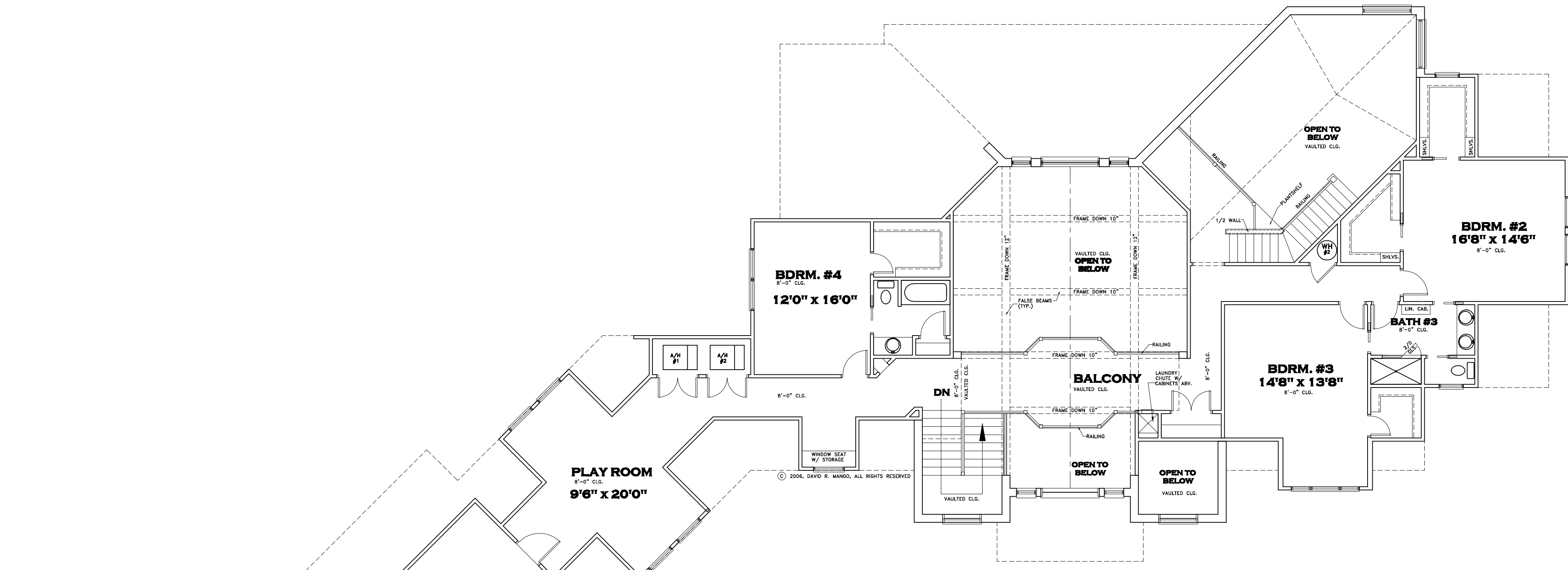
1ST FLR. LIVING	3411
2ND FLR. LIVING	2106
TOTAL LIVING	5517
GARAGE	1840
LANAI	375
COV. ENTRY	93
BREEZEWAY	482
TOTAL	8307
UNFIN. BONUS ROOM	644

 © David R. Mango Design Group, Inc.
www.davidmangodesign.com

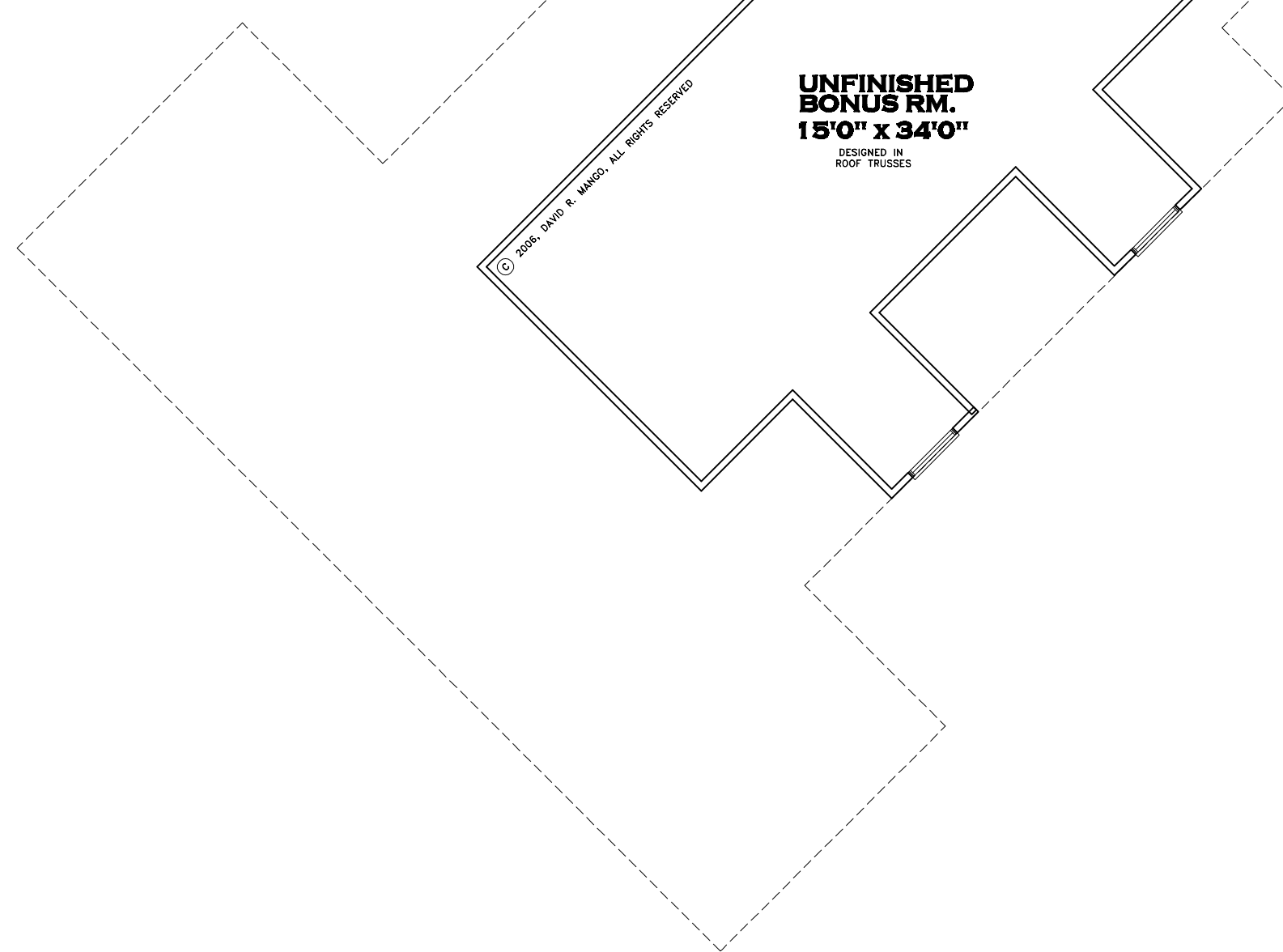
David R. Mango Design Group, Inc. is the sole owner of this COPYRIGHTED design and reserves the right to make modifications to design without notice. Any reproduction of this design in whole or in part without the written consent of DRM Design Group, is prohibited. This design is protected under Federal Copyright Laws.

© 2006, DAVID R. MANGO, ALL RIGHTS RESERVED

All dimensions are approximate
All dimensions are inside measurements.



#06-5517
2ND FLOOR PLAN



© David R. Mango Design Group, Inc.
www.davidmangodesign.com

David R. Mango Design Group, Inc. is the sole owner of this COPYRIGHTED design and reserves the right to make modifications to design without notice. Any reproduction of this design in whole or in part without the written consent of DRM Design Group, is prohibited. This design is protected under Federal Copyright Laws.