



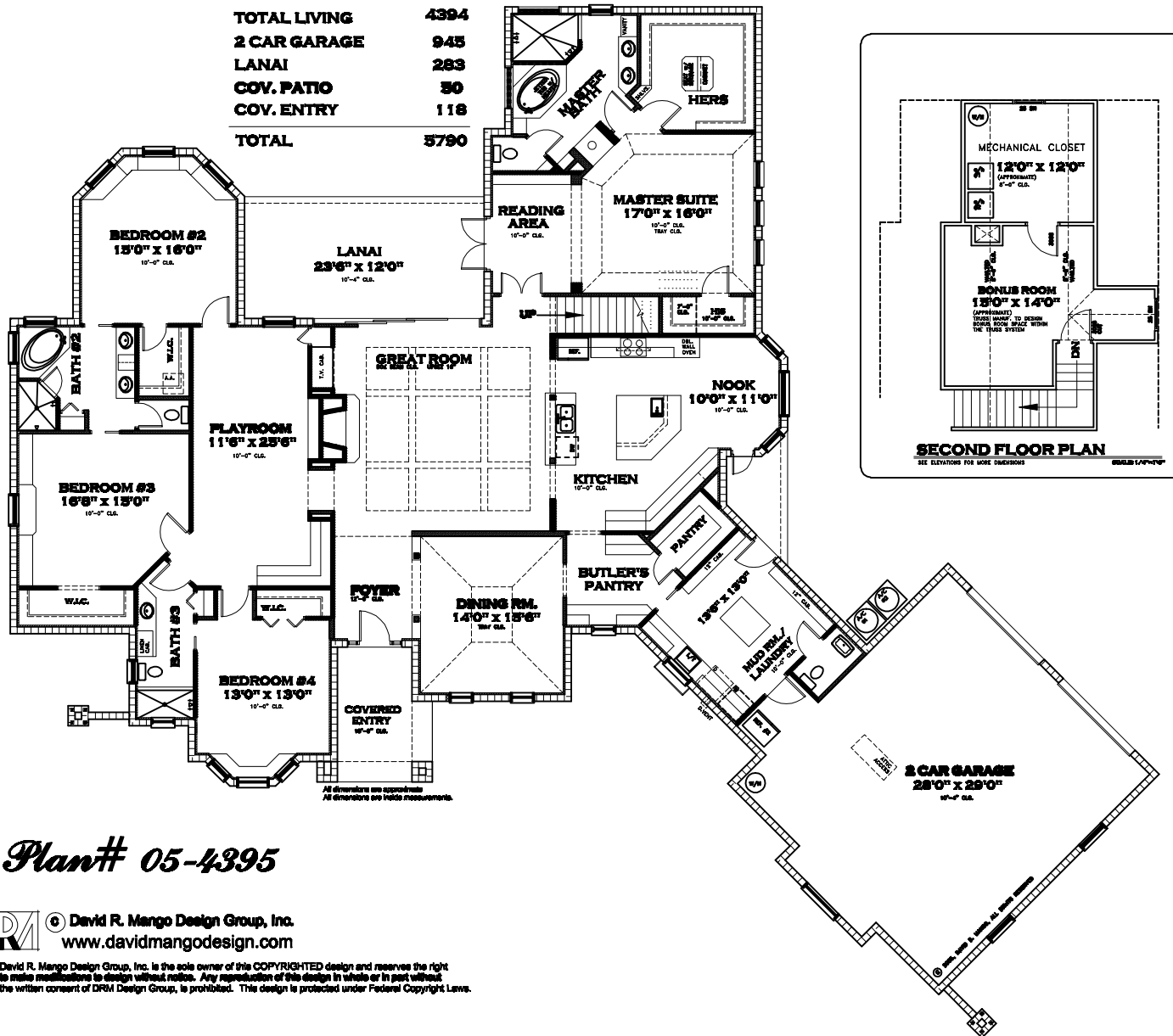
© David R. Mango Design Group, Inc.
www.davidmangodesign.com

David R. Mango Design Group, Inc. is the sole owner of this COPYRIGHTED design and reserves the right to make modifications to design without notice. Any reproduction of this design in whole or in part without the written consent of DRM Design Group, is prohibited. This design is protected under Federal Copyright Laws.

Plan# 05-4395

SQUARE FOOTAGE

1ST LIVING	3894
2ND LIVING	300
TOTAL LIVING	4394
2 CAR GARAGE	945
LANAI	283
COV. PATIO	30
COV. ENTRY	118
TOTAL	5790



Plan# 05-4395

DRM © David R. Mango Design Group, Inc.
www.davidmangodesign.com

David R. Mango Design Group, Inc. is the sole owner of this COPYRIGHTED design and reserves the right to make modifications to design without notice. Any reproduction of this design in whole or in part without the written consent of DRM Design Group, is prohibited. This design is protected under Federal Copyright Laws.