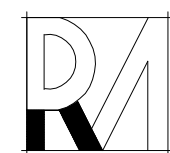




© 2016, DR. MANGO, L.A. ALL RIGHTS RESERVED



© David R. Mango Design Group, Inc.
www.davidmangodesign.com

PLAN #06-3950

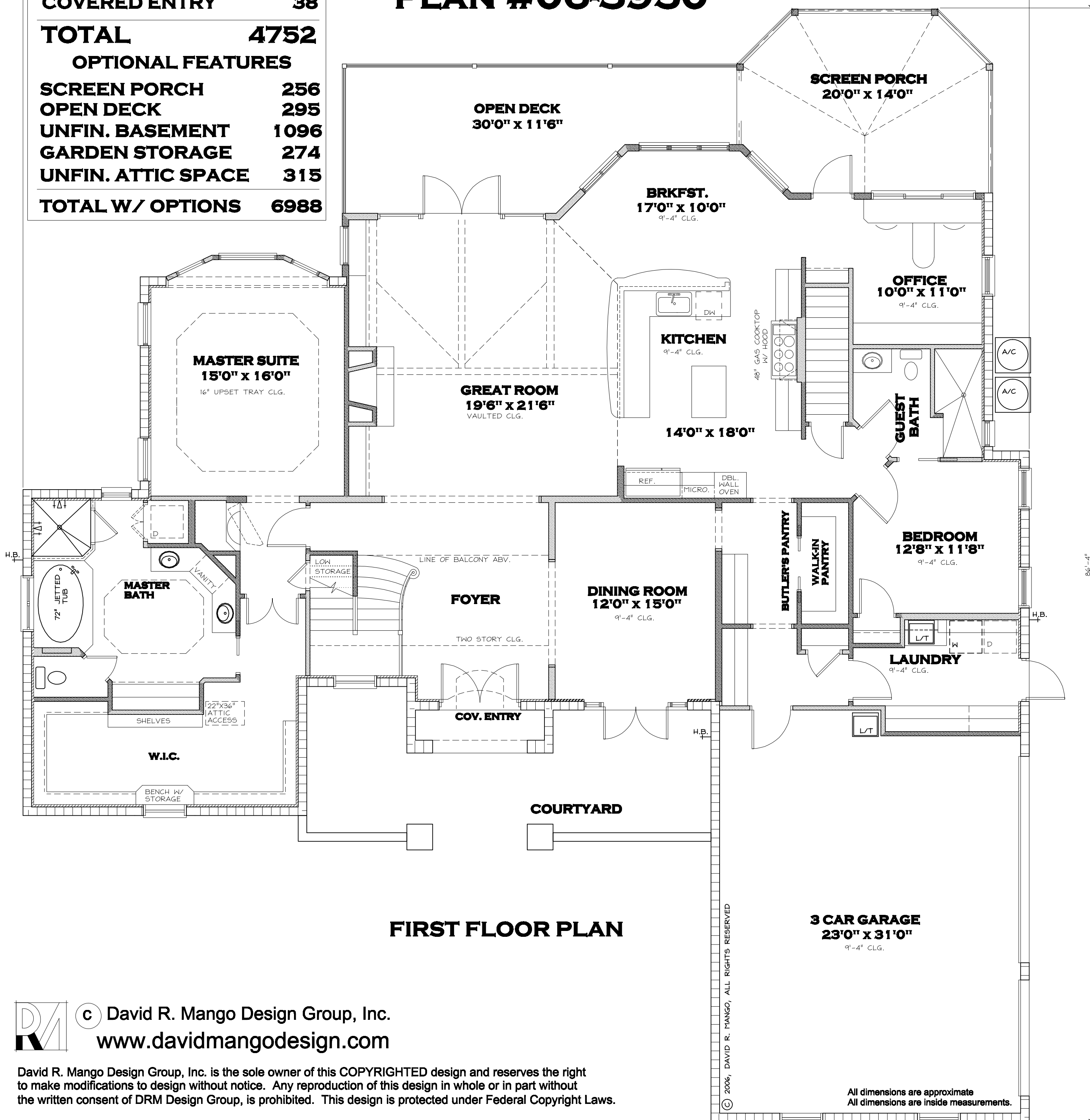
David R. Mango Design Group, Inc. is the sole owner of this COPYRIGHTED design and reserves the right to make modifications to design without notice. Any reproduction of this design in whole or in part without the written consent of DRM Design Group, is prohibited. This design is protected under Federal Copyright Laws.

78'-0"

SQUARE FOOTAGE

1ST FLOOR LIVING	2983
2ND FLOOR LIVING	967
TOTAL LIVING	3950
3 CAR GARAGE	764
COVERED ENTRY	38
TOTAL	4752
OPTIONAL FEATURES	
SCREEN PORCH	256
OPEN DECK	295
UNFIN. BASEMENT	1096
GARDEN STORAGE	274
UNFIN. ATTIC SPACE	315
TOTAL W/ OPTIONS	6988

PLAN #06-3950



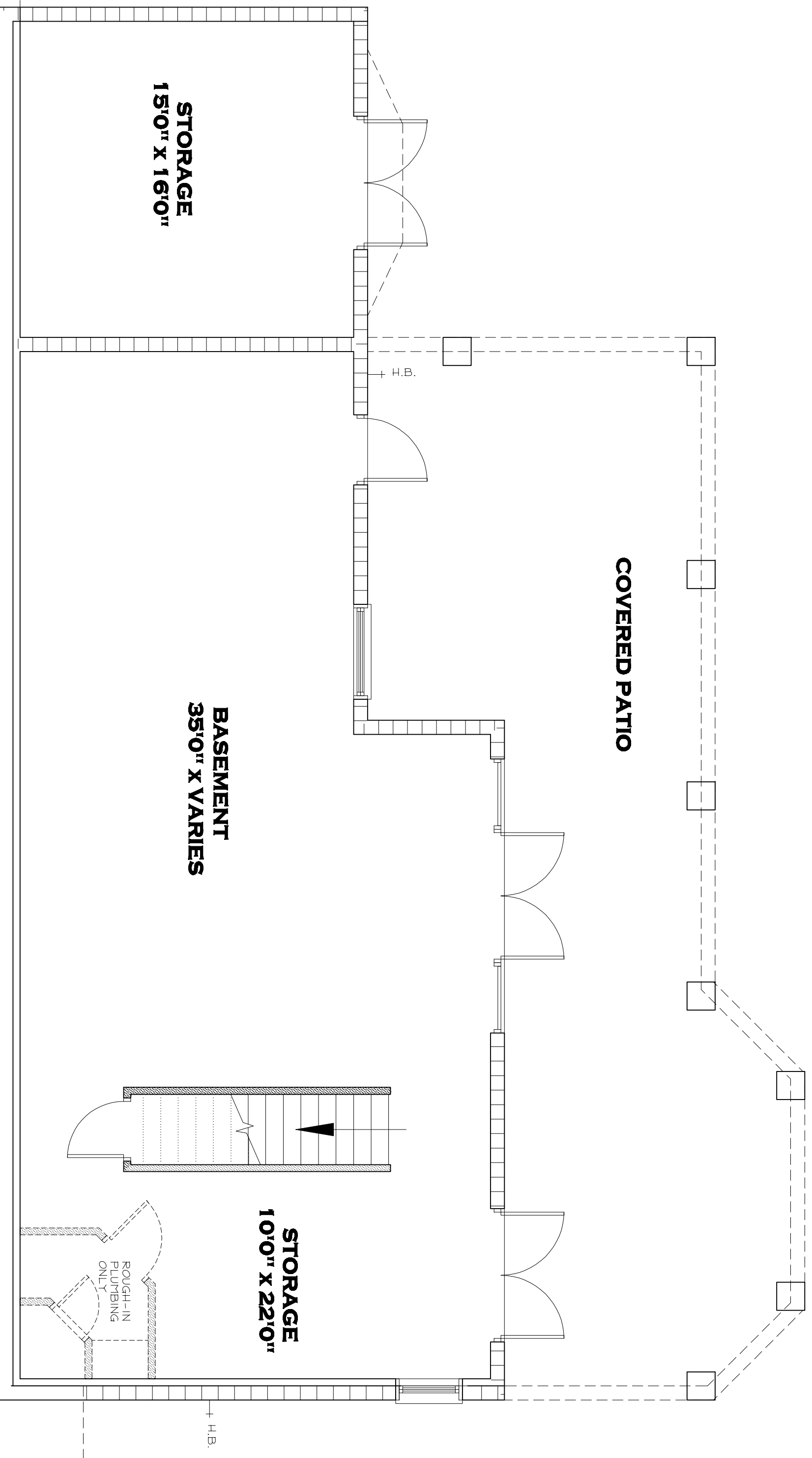
FIRST FLOOR PLAN

 © David R. Mango Design Group, Inc.
www.davidmangodesign.com

David R. Mango Design Group, Inc. is the sole owner of this COPYRIGHTED design and reserves the right to make modifications to design without notice. Any reproduction of this design in whole or in part without the written consent of DRM Design Group, is prohibited. This design is protected under Federal Copyright Laws.

© 2006, DAVID R. MANGO, ALL RIGHTS RESERVED

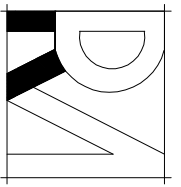
All dimensions are approximate
All dimensions are inside measurements.



All dimensions are approximate
All dimensions are inside measurements.

BASEMENT FLOOR PLAN

PLAN #06-3950



© David R. Mango Design Group, Inc.
www.davidmangodesign.com

David R. Mango Design Group, Inc. is the sole owner of this COPYRIGHTED design and reserves the right to make modifications to design without notice. Any reproduction of this design in whole or in part without the written consent of DRM Design Group, is prohibited. This design is protected under Federal Copyright Laws.