

# AMAZING GRACE CONNECTIONS

OUR MISSION: faith | family | community



JUNE 2021



Summer's  
Arrival

Summer has arrived. Warm weather has arrived. We are beginning outdoor worship. The garden is growing.

Vaccinations are growing and growing, cases are decreasing, and we are on the right track to getting back to “normal”.

Read more on page 3

# AMAZING GRACE CONNECTIONS

## JUNE 2021 ISSUE



### WHAT'S INSIDE

Summer's Arrival	3
Financial Matters	4
Blood Drive	5
Rebecca Circle	6
Thank Yous	7
Salvation Army Donations	8
Bridge of Life Donations	9
Rummage Sale	10
Walking Path	11
Getting to Know You	12
Where to Find Us	13-14

Welcome to Amazing Grace Connections,  
Grace Lutheran Church of Lily Lake's  
newsletter!

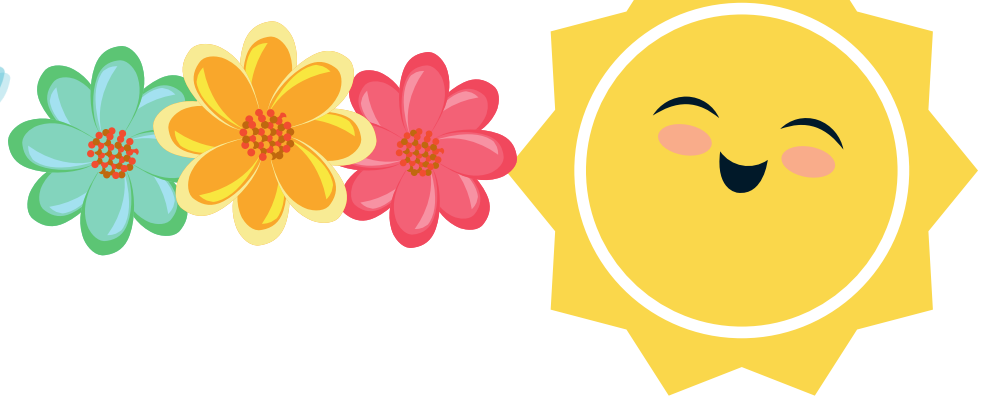
For article submissions and announcements,  
please email your submission to  
[churchsec@graceoflilylake.com](mailto:churchsec@graceoflilylake.com) by the 15th of  
each month to be included in the next  
newsletter!

### VIRTUAL OFFICE HOURS

Monday	4 PM - 7 PM
Tuesday	4 PM - 7 PM
Wednesday	4 PM - 7 PM
Thursday	4 PM - 7 PM
Friday	4 PM - 7 PM

# Summer's Arrival

By Nick Rex



Summer has arrived. Warm weather has arrived. We are beginning outdoor worship. The garden is growing.

Vaccinations are growing and growing, cases are decreasing, and we are on the right track to getting back to “normal”.

However, we are far from normal at Grace as we continue our search for a new pastor. The call committee has been hard at work putting together our ministry site profile that goes out to candidates and gets reviewed by the synod to make sure we are all on the same page from the start.

Our synod is currently meeting with local pastors to discuss the possibilities, logistics, etc. of sharing a pastor with an existing congregation.

While we all want to start interviews, watch potential pastors preach, and get a new pastor... these conversations take time and will have to involve other church councils and leadership as well. It will also involve our Vision Team, our leadership, and YOU, our members, as the process moves on. What we have been used to as our “normal” may not look the same if we are sharing a pastor. There will be a lot of input from a lot of people that will help us all determine what our new normal will look like with a new pastor.

In the meantime, I am working hard to make sure we are covered for Pulpit Supply each week. We have familiar faces joining us through the end of June, so be sure to come out and enjoy worship with a great view of our beautiful grounds! We tend to get busy, travel, and just not attend Sunday worship as frequently in the summer. The good news is that with our service posted each week online and in our app, you can enjoy our guest preachers no matter where you are, whenever you want. It isn't as good as being there, in person, out in our grass or under the pavilion, but it is a blessing to have that opportunity afforded to us.

Happy Summer!

Nick Rex  
President



# FINANCIAL MATTERS



Thank you to the Audit Team who completed their 2020 Audit review. We anticipate holding a Congregational Meeting in June or July to accept the 2020 Audit (as well as the 2019 Audit that we never were not able to conduct a meeting for). We will communicate the date of this brief meeting, after a service on Sunday morning, as soon as we can.

Our finance balances have been positive, understandably so, as we have not been paying a Pastor's salary for April and May; we have only incurred Pulpit Supply costs. A Pastor's salary and benefits, for full or part-time, is a large component of our yearly budget.

We propose to send out your Giving statements by mid-July. This will be a gentle reminder to review your personal financial giving for the first half of 2021. This statement will also be a reminder that our offerings usually decline in the summer months, and to prayerfully review your tithes and talents in these upcoming months.

Please pray and consider the role you could assist in on our Stewardship Team. This Team selects the stewardship campaign and puts the plans into action. We do not have a Pastor at this time to assist in this role, so we are needing our members to join this team and take this task forward. It is a short-term commitment and you will set the timeframe. Please contact Nick Rex or Tricia Painter for some further details.



# BLOOD DRIVE



SO YOU WANT TO HELP  
GOOD NEWS - NOW YOU CAN!

GRACE LUTHERAN CHURCH is sponsoring a blood donation drive  
on WEDNESDAY, JUNE 16th 3 - 7pm

TO BE HELD IN OUR CHURCH'S PARKING LOT  
IN VERSITI'S MOBILE COACH

PLEASE SAVE THE DATE

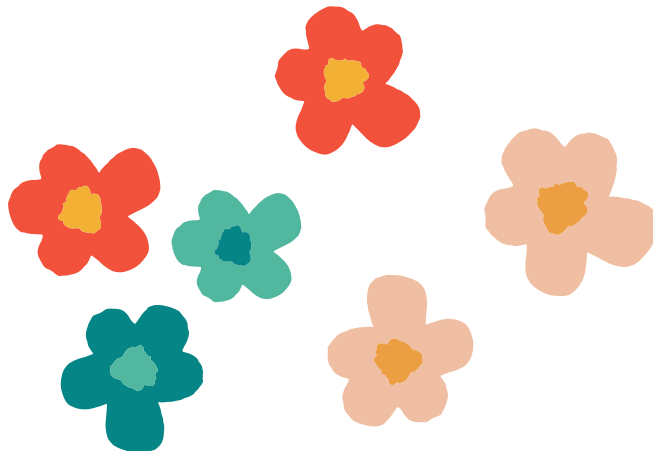
To sign up,  
Please call the church at 630-365-6751 and  
leave your name and either your phone number or email.  
Messages are checked daily at 5pm.  
Thanks in advance!

# Rebecca Circle



**REBECCA CIRCLE** met on May 25th at church and we are so grateful that 18 members were able to attend. It was so good to be together again. We packed boxes of remembrance for our military family and friends on our prayer list. Jan and Kathy were hostesses and Margaret Swanson gave the devotions and touched our hearts! We got our planning for the next year started!

**Our JUNE MEETING** will be held on Tuesday, June 15th at Grace with Adrian Mikrut and Nancy Corbige as hostesses. Please watch for further info and we surely hope to see you then!







Thanks to you, my wonderful friends, I received 62 birthday cards as of May 10th. I enjoyed reading every one. You all wrote loving notes! The day of my 90th birthday was beautiful. We will share cake together soon!

-Margaret



On behalf of Grace, we thank George and Gloria Theros who will be attending the virtual Synod Assembly on June 5th. We look forward to their thoughts, comments, recap of the meeting"

Spring is in the air and things are growing, greening up and need tending to:

Our thanks to:

- John Verner who is seen quite often tending to the mowing of our grounds
- Linda Smykowski, with friends Debbie and Scott, who are tending to the garden -- planting has begun and IS growing!
- Linda Smykowski who will be planting and maintaining flowers under the bell tower
- Kurt Redemann for various planting and weeding around in flowerbeds; Nancy Corbidge has volunteered to tend to the weeding on southwest corner areas adjacent to the church. If you would like to help on a few other flowerbeds, please see Kurt

Redemann



Linda Smykowski has agreed to plant and manage the Flower Garden underneath the Bell Tower. Thank you so much, Linda. Thank you also for doing such a good job on the Church Community Garden. The vegetables are growing already.

# Do Good. Get Donuts.

## Food Drive for The Salvation Army Tri-City Corps

National Donut Day - a tradition since 1938



When: **Saturday, June 5th**

Time: **8am to 1pm**

Where: **Blue Goose Market Parking Lot**

**300 S. 2nd St., St. Charles, IL**

Questions? Call Lt. Dena at 630-377-2769

Drive up & volunteers will assist with unloading donations.



Donate & receive a coupon for a free gift from **Blue Goose Market:**

**Free Donut Coupon valid 6/6 to 8/31**

The following items are ALWAYS needed at the Food Pantry:

### Diapers/pull-ups

(especially sizes 5 & 6)

Baby wipes

Shampoo/conditioner

Toothpaste

Deodorant

Soap/body wash

Pads & tampons

Adult diapers

Laundry soap

Dish soap

Paper towels

Tissues

Pancake mix & syrup

Breakfast cereal

Baking staples

(flour, sugar, etc.)

### Condiments

(mustard, mayo, ketchup, etc.)

Coffee/tea

Pasta & pasta sauce

Macaroni & cheese

Stuffing Mix

Instant mashed potatoes

Brown paper bags

Peanut butter & jelly

Canned goods, *such as:*

Ravioli

SpaghettiOs

Fruit

Tuna & chicken

Beans

Vegetables





## Bridge of Life Donations

Ginger & Rob Weincek came to Grace on May 8th and picked up the collection of clothes and blankets that we had collected for the Bridge to Life Group that distributes the donations to the Elgin homeless. We will continue collecting donations for them. Thank you to all for the generous donations. Please mark the items with Cathy Whiteside's name and she will pass them on to Ginger & Rob.

- They have a new policy to not pass out used socks or underwear. Even if they are washed. They use cash donations to purchase new underwear and socks now. So they don't accept underwear or socks.
- Backpacks
- Blankets
- Gym shoes- both men and women

**WOMEN- ONLY** jeans, t-shirts, lightweight jackets for spring/summer. Sizes medium-large. (There are not a lot of women right now.)

**MEN- ONLY** t-shirts, jeans (sizes 32-38 waist X 30-34 length are **REALLY** needed but they will take other sizes of men's jeans), shorts.



# RUMMAGE SALE

## RUMMAGE SALE SUCCESS – breaking a record!

What a successful rummage sale we had on May 14 & 15! After our (forced) sabbatical from rummage sales in 2020, we had accumulated many donations. Our 'sale site' expanded this year, as we had clothing, etc. located under the pavilion, utilized the garage area for 'outdoor related' items, and used Fellowship Hall and only one SS classroom for indoors. This allowed many shoppers to peruse areas and not be congested. The weather cooperated – tho a little misty and chilly on Saturday. I am most appreciative of all of your support and assistance from many of our members with the numerous tasks before, during and after the sale. Some pre set-up in Fellowship Hall, with Ian Engberg, Twyla Strom and Heidi Anderson; along with Cathy Whiteside's expertise on organizing the clothing with the assistance of many before, during and after the sale too! Sale signs were set up/placed by Bill + Lori U'Ren, Heidi Anderson, Nancy Corbidge, and Casey Engberg.

Cathy Whiteside continues to coordinate several avenues and charities before and after the sale, taking clothing items that are very welcomed : Redeemer Fellowship Church (St Charles) , Elgin Homelss and small items to be used to fill some Operation Christmas Shoeboxes.

The success of this sale comes from a church-wide effort with all of your 'material' donations and contributions along with your time and talents. Many of you reading this report were a part of this sale, in big and small ways, from donating items to volunteering at the sale = I am grateful for your participation. Cathy Whiteside, Twyla Strom, Heidi Anderson, Ian and Casey Engberg, Margaret Swanson, Suzanne Girsch, Kay Kinsel, Helen Gruber, Marty Bradley, Lee Gerke, Chris Gerke, Karen Patterson, Dottie and Paul Mantsch, Jan Myers, Linda Smykowski, Kathy Hooey, Rebecca Hooey, Nancy Corbidge (+ Danny), Adrienne Mikrut, Cara Turner-Kusch, Alisa Deutschmann, Gloria and George Theros, John Verner, Jon Whiteside, Pat and Lee Eineke, Kurt Redemann, Nancy Schnaitman. I apologize as I may have missed a name or two – but try to track the willing hands that are with us during the sale tasks. (Noting the garage hasn't looked so clean and organized in years!! – thank you Ian and John )

I feel so blessed that so many of you took the time out of your schedules to help with this fundraiser for Grace. I would not be able to coordinate these sales without all of you. Our 2-day sale netted just over \$4,200 (which is a record for the 2-day sale since I have been tracking #s!) and with some on-line ads and sales before and after the sale, we have raised over \$5,500 in 2021. I thankfully pray for all of the support that so many of you gave – many hands makes the tasks at hand run smoothly and provided a very successful fundraiser.

In Peace, from Your Fellow Grace Member,

Tricia Painter, Rummage Sale Coordinator

# Walking Path



We welcome people to come use the walking path in the back of the church. There is a little, basic map of just the path itself tacked to the pavilion.

Also, in the southwest corner of the path, there is a large rock. On it has a little mesh black bag with 7 golf balls in it. It is a way to keep track of how many times you've walked around the path. (Sometimes, we can lose track.) (smile) Generally, it can take 20 minutes to walk one mile, but it is all relative. It is approximate that it takes 7 or 8 laps to go one mile.

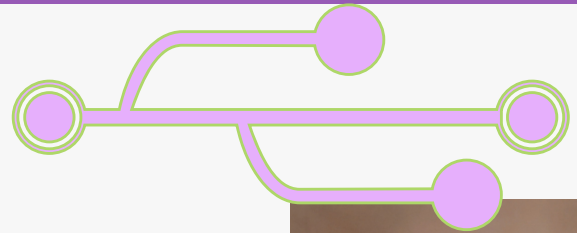
Folks can come on their own, with a partner, dawn to dusk. Also...if there shows interest, we can create a walking club. Contact Nancy Corbige if you would like to join a walking club to meet at the church and walk more than just the path. Happy Spring everyone!





# Getting to Know You

GEORGE AND GLORIA THEROS



George was born in Chicago, September of 1953, but was raised in Maywood, Ill. He went to grade school and was confirmed at St. Paul Lutheran Church in Melrose Park. He attended Proviso East High School in Maywood, with a short college attendance at UICC (University of Illinois Chicago Circle campus). His first job was washing dishes at a steak house during his high school years, cutting grass at a cemetery after high school and landing a job at Illinois Bell Telephone as a Building Serviceman (janitor). There he progressed through multiple job advancements and finally after the company changed from Illinois Bell, to Ameritech and purchased by SBC, George retired with a few months over 29 years. He has had two additional employments, Service Master in Downers Grove and currently with MCC Technology in St. Charles; where he on the verge of a partial retirement.

Gloria was born in Melrose Park, March of 1954 and was raised in unincorporated Melrose Park. She attended grade school at St. Gertrude Catholic Elementary School in Franklin Park, Ill. Then she went on to West Leyden High School in North Lake, Ill. Gloria started working at Illinois Bell Telephone in Oak Park as a Long Distance Operator.

Here is where we met, Gloria will tell the story how they met; however, George's rendition is much more exciting, possibly a little bit of a tale. No matter what the story is, love ensued and so did marriage. The ceremony took place at St. Paul Lutheran Church in Melrose Park, May 18th 1974.

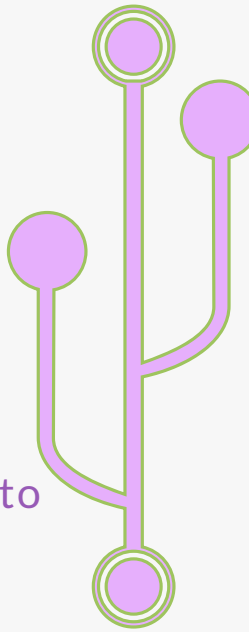
We have two children son Adam born May 9th, 1975 and our daughter Sarah born June 30th, 1977 and both were baptized at St. Paul Lutheran Melrose Park.

We moved into Lily Lake April of 1986 and began attending Grace Lutheran. Adam married Rachael Cochrane at Grace on Sep 9th, 2000. They have 2 children Steven Michael born May 10, 2007 and Alexis Jean was born on March 23, 2010, both were baptized at Grace. They now live in St, John IN.

Sarah married Jorge Corona Jan 23rd, 2005 also at Grace Lutheran. Sarah has 3 stepchildren and 8 step grandchildren. She and Jorge live in St. Charles

Gloria and George both come from large families, George from a family of 5, 2 brothers and 2 sisters; Gloria from a family of 8, 2 brothers and 5 sisters.

# LOOKING FOR WHERE TO FIND US?



**WORSHIP** – on our website every week! Click the media tab to find every current and past service! [graceoflilylake.com](http://graceoflilylake.com)

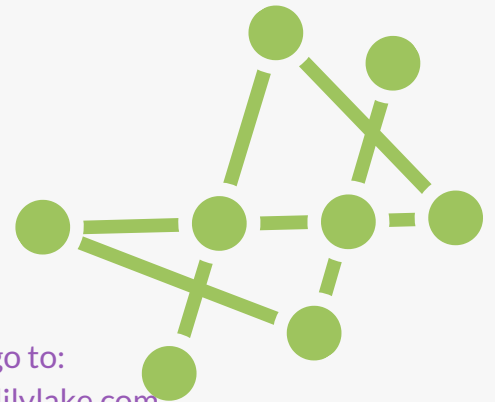
**FELLOWSHIP** – on Zoom - check weekly eblast for weekly particulars

**BIBLE STUDY** – Zoom the second and fourth Tuesday of each month at 9 AM. Contact Nancy Corbige at 47-212-0237 or Cathy Gjerde for details.

**PRAYER** - For emergencies, call Nick Rex, our congregational president, at 630-742-5836

For prayer or other needs you can leave a message on Grace's answering machine (it is checked daily at 5pm), or call Kathy Hooey at 630-341-2293 or email her at [kandkhooey@aol.com](mailto:kandkhooey@aol.com)

# LOOKING FOR SOMETHING ELSE?



While we are apart and you have a need or a question, here is who to go to:  
Financial questions or how to give – Tricia Painter [treasurer@graceoflilylake.com](mailto:treasurer@graceoflilylake.com)  
Building questions – Kurt Redemann 630-918-4509  
Other questions - [churchsec@graceoflilylake.com](mailto:churchsec@graceoflilylake.com)

DO YOU WANT YOUR ARTICLE IN THE NEWSLETTER?

**SUBMIT BY JUNE  
15, 2021**

**YOUR ARTICLE WILL APPEAR IN OUR  
JULY EDITION!**

Submit by emailing your article to  
[churchsec@graceoflilylake.com](mailto:churchsec@graceoflilylake.com). All submissions  
welcome. Share your voice with us!



**AMAZING  
GRACE  
CONNECTIONS**

