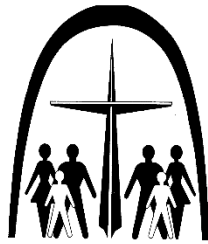


CLC Ministries and Activities 2023-24



Office Staff

Contact Us

Office Hours

Our Beliefs

Expectations of Membership

Worship Schedule

Ministries and Events

History

The Stained Glass

Children at Christ

Map

Office Staff

Pastor Andrew Belt, *Pastor*

Tammy Schwartz, *Director of Christian Education (DCE)*

Dana Speth, *Parish Administrator*

Contact Us



715-384-3535



Christ.marshfield@gmail.com



www.christmarshfield.org



www.facebook.com/clcmarshfield



www.christmarshfield.org/media

www.youtube.com/clcmarshfieldwi



Download our App! Search “Christ Marshfield” in the App or Google Play store.



1208 West 14th Street
Marshfield, WI 54449

Office Hours

Monday – Thursday from 8am – 1pm

(There is often someone here in the afternoon, but it is best to call ahead).

Our Beliefs

We are a member of the Lutheran Church Missouri Synod (LCMS).

This congregation acknowledges and accepts all the canonical books of the Old and New Testaments as the revealed Word of God, verbally inspired, and acknowledges and accepts all the Confessional writings of the Evangelical Lutheran Church, contained in the book of Concord of the year 1580, to be the true and genuine exposition of the doctrine of the Bible. These Confessional Writings are the three Ecumenical Creeds (Apostles, Nicene, and Athanasian) and Unaltered Augsburg Confession, the Apology of the Augsburg Confession, the Smalcald Articles, Luther's Large and Small Catechisms, and the Formula of Concord.

Grace Alone: God loves the people of the world, even though they are sinful, rebel against Him and do not deserve His love. He sent Jesus, His Son, to love the unlovable and save the ungody.

(2 Tim. 3:16, Psalm 119:105, Hebrews 4:12-14)

Faith Alone: By His suffering and death as the substitute for all people of all time, Jesus purchased and won forgiveness and eternal life for them. Those who hear this Good News and believe it have the eternal life that it offers. God creates faith in Christ and gives people forgiveness through Him.

(Ephesians 2:8-9, Romans 3:20-24, Acts 15:11)

Scripture alone: The Bible is God's inerrant and infallible Word, in which He reveals His Law and His Gospel of salvation in Jesus Christ. It is the sole rule and norm for Christian doctrine.

(Acts 16:30-31, Romans 10:9-10, Matthew 19:25-26)

Check out **www.lcms.org** for more information on what we believe.

What you can expect from us as a member

Faithful preaching and teaching of the true Word of God

Sacraments of Baptism and Holy Communion

Confirmation classes/adult instructions

Attention to and prayers for the sick and shut in

Marriage instruction and service

Christian burial

What we expect from you as a member

Faithful attendance at worship

Faithful communing at Lord's Supper

Support with both offerings and prayers

Prayers for the church and pastors

How to Keep Up-To-Date on Events and Activities

Come to service

Watch the mail for the monthly newsletter

Sign-up to receive the Friday email newsletter

Find upcoming events on the website

Check the bulletin board and table in the Narthex

Like us on Facebook

Download our App

Divine Services

Thursdays at 6:30pm

Sundays at 9am

Chapel

Wednesday at 9am

(September – May)

Communion

Every Service

(and first Wednesday of the month Chapel)

YouTube and MCTV

We film most of our services. They air on MCTV (Cable Channel 989) and are available on our YouTube page and the App (usually within a week).

MCTV Times: Wed. at 2pm, Sun. at 12:30pm

Youth and Children's Ministries

Sunday School

Sunday School is at 10:30am and is for children ages 3 through 8th grade. (September through May). Classes are broken up by grade. We use a Bible-based curriculum that teaches the children the many stories found in the Bible as well as overarching themes.

SaLT and Light

This is a Jr and Sr High Bible Study and leadership group led by our DCE, Tammy Schwartz. It meets after Sunday School in the Youth Room.

Christmas Program

Every year (usually the Sunday a week or two before Christmas), the Sunday School puts on a special Christmas service. The children act out the Christmas story through Bible readings and songs.

P.U.P.P.E.T.S.

Our P.U.P.P.E.T.S. (People Using Puppets for Preparing Each other with The Spirit) is just what it sounds like and more. They use puppets and signs to enact various songs, often performing during church services and in the community. They also do other creative ministries, including human videos, flag routines, and black light hand mimes. They practice on Wednesday nights at 7:30pm. Grades 5-12.

Potter's House Café

Potter's House is held before Confirmation class on Wednesdays (5:30-6:30 pm). There is food for sale, open gym, board games, and a chance to just hang-out. This is especially for our Confirmation students and youth in PUPPETS, but any Jr and Sr High youth are welcome.

Confirmation

Confirmation classes are held on Wednesday nights (Sept-May). Students can start as early as 5th grade. During their two years of classes, students learn more about the Christian faith, including:

- How Christians Live (The Ten Commandments)
- Who God Is (The Apostles' Creed)
- How to Pray (The Lord's Prayer)
- How to Forgive and Be Forgiven (The Office of The Keys and Confession)
- What Baptism Is (Holy Baptism)
- What The Lord's Supper Is and Does (The Lord's Supper)
- And the history of the Reformation and the formation of the Lutheran church.

Students are Confirmed after successfully completing two years during a special service.

Adopt-a-Confirmand

Members of the congregation anonymously “adopt” a confirmation student. Sponsors pray for their student and send them the occasional encouraging note, card, and/or gift during the student’s two years of classes. Students find out who their sponsor is at Confirmation Rehearsal at the end of their second year.

Vacation Bible School (VBS)

VBS is held the first week of August (Monday – Friday in the morning). It is for ages 3 through 6th grade (older children are welcome to volunteer). Children spend the morning singing, listening to Bible stories, making crafts, playing games, eating cookies, and enjoying the decorations. Work nights are held in July to make all the decorations.

National Youth Gathering

The National Youth Gathering is held every three years. It is a gathering of LCMS youth ages 14-19 from all over the country. They spend a week attending large gatherings and worship service, workshops, doing community service, and exploring the city (previous gatherings have been held in New Orleans, LA, San Antonio, TX, and Orlando, FL). The next event is 2025. Youth must sign-up to attend in early Fall the year prior to the event.

Bible Studies

Sunday Morning

Our Sunday morning study is held after service (10:15-11:15am) in the Fellowship Hall. We are going through the Augsburg Confession this year.

Wednesday Morning

Our Wednesday Bible Study meets at 9:30am. It is led by the Pastor. We usually go section by section through a book of the Bible. This year we are doing some of the Minor Prophets.

Men's Breakfast Bible Study

This group of men meets Monday morning at 7:30am in the Fellowship Hall. Led by Ed Rehmer.

Tuesday Afternoon Small Group

This small group meets Tuesday afternoons at 3pm in the Bride's/Prayer room. Topics vary, but usually involve reading through a book. Led by Yvonne Rosche.

Ladies Group – NEW

We are in the process of starting a new ladies' group this year. The idea being to meet for Bible Study and fellowship. If you are interested in getting on the contact list for this, please contact the office.

Bible Study Ideas?

Do you have an idea for a Bible Study? Or are interested in leading one? Please talk to the Pastor.

Church Council and Boards

The Church council oversees the work of the Church, especially the property and financials. They meet monthly.

Boards include Evangelism, Property, Worship, Education (Sunday School), and Youth. Members help plan and facilitate various events and ministries throughout the year.

Elders

The Elders have authority and responsibility for the spiritual welfare and activities of the congregation. They support the pastor with the general spiritual welfare of the congregation and assist him in difficult problems of the ministry. Elders are men 21 years or older.

Music

Our music groups (Choir and Handbells) are currently in the process of rebuilding. If you are interested in being involved or leading either group, please contact Pastor Belt or the office.

Ways to Help in Worship

Greeters

We have no formal greeters' program, but several people come early to help open doors and hand out bulletins. No sign-up necessary.

Projector

Our projector software is easy to use. All it requires is to push a button to advance the slides during service.

Altar Guild

The Altar Guild is responsible for setting-up and cleaning-up Communion, as well as changing altar paraments and watering altar flowers. Members set-up a schedule in advance. You would be assigned to a week every few months.

Other Ways to Serve and Be Involved

Funeral Meal and Potluck Help

We hold many meals here at church for funerals and church events. Help is always needed in the kitchen to set-up, serve, and clean-up.

Lutheran Women's Missionary League

The Lutheran Women's Missionary League (LWML) is the official women's auxiliary of The Lutheran Church—Missouri Synod. The LWML focuses on affirming each woman's relationship with Christ, encouraging and equipping women to live out their Christian lives in active mission ministries and to support global missions. Our LWML is in need of new leadership and rebuilding. If you are interested in this, please contact Pastor Belt.

Ladies Aid

The Ladies Aid is a women's Bible Study and fellowship time. They meet on the second Thursday of the month at 12:30pm in the Fellowship Hall. (September - December and April - May). All women are welcome to come. Many of the ladies who are a part of Ladies Aid also help serve funeral meals and provide deserts.

Gardening

We have some very nice gardens that need weeding and watering during the summer. You are welcome to come anytime you want to.

Prayer Team

The Prayer Team meets on the first Tuesday of every month at 4:15pm. They spend time praying for the congregation and individual members.

Prayer Chain

Members of the prayer chain receive an email prayer list every week. Email christ.marshfield@gmail.com to be added to the list.

Men's Maintenance Group

A group of men get together most Monday mornings to help with the many maintenance projects around the building and grounds.

Outreach

As part of the command to “love one another” we believe it is our duty to help those in need. There are many ways we do that throughout the year. We are always looking for more. Some annual collections include items for the Veterans at King, an annual VBS mission, donations of school supplies for local families, Operation Christmas Child shoeboxes, and many more.

General Fund Tithe

Each month, ten percent of our general offerings is given to various missions and ministries, both local and international.

Mission and Outreach Fund

Every December our general fund tithe goes to our Mission and Outreach Fund (formerly Social Ministries). This money is used throughout the year to support local and national charities and individual families in need.

History

In 1927, Immanuel Lutheran Church experienced a major schism amongst its parishioners. The dispute over doctrine led 40 families to leave and, on May 20, 1928, form Christ Lutheran Church. Two months later they called Pastor Arnold Dornfeld as their first pastor. Under his leadership they chose to build a church on the corner of 3rd and Walnut, a building which was completed and dedicated on February 10, 1929.

Pastor Dornfeld served Christ Lutheran Church until 1944 when failing health caused him to step down. The call committee then convinced Pastor T.P. Bradtke to leave his teaching job at a Lutheran High School and become Christ Lutheran's second pastor. He went on to serve here for 43 years.

Pastor Bradtke's years as pastor saw the end of German services in 1959, the switch from the Wisconsin Synod to the Missouri Synod in 1964, and the building of a new church building, the current Christ Lutheran Church, in 1969. In 1986, near the completion of the multipurpose room and new Sunday School rooms, Pastor Bradtke announced his intention to retire.

Pastor Bradtke retired on September 13th, 1987 and a week later Pastor Mark Krueger was installed as the third pastor.

As of 1990, the congregation had grown to 1440 baptized members and so decided to call another pastor to serve alongside Pastor Mark. In July of 1990, Pastor Stewart Crown was installed as the first assistant pastor. He resigned two years later to continue his studies.

In 1993, Pastor Steven Chellew was called as the second assistant pastor. His wife, Val Chellew, and Pat Retz organized the preschool in 1995. The preschool was at the church for 17 years.

Another addition to the church was dedicated on April 13, 1997. This building project included the choir room, additional offices, the education wing, and a kitchen remodel.

One year later, Pastor Steve accepted a call in Iowa which led to the calling of Pastor Daryn Bahn as associate pastor. He was installed on April 18, 1999. In the meantime, Tammy Schwartz was called to serve as Director of Christian Education and was installed on August 9, 1998.

2002 saw the completion of a renovation project ahead of the 75th Anniversary celebrations in 2003. The project included refurbished pews, new carpeting and tile for the sanctuary and narthex, a redesigned parking lot, and a new sound and lighting system.

The next few years saw the purchase of a new organ, a new metal roof, and the planting of the Bradtke Memorial gardens. A fountain was added to the gardens in 2013 in honor of Pastor Mark and Sandy Krueger.

In 2012, the church saw another major change when Pastor Mark retired on August 19 after 25 years at Christ Lutheran. A call committee was formed. At the annual meeting in January 2013, the congregation voted to make Pastor Daryn senior pastor. The committee then started the process of calling a new associate pastor.

After exploring several options, the committee decided to pursue calling a pastor right out of seminary. Six members went down to Saint Louis in January of 2014 to interview four soon-to-be graduates. Three months later at the Seminary Call Day service, we learned that Pastor Andrew Wilson and his wife Brianna were placed with Christ Lutheran Church. On June 29th, 2014, Pastor Wilson was installed and ordained as only the seventh pastor to serve this congregation.

On November 19th, 2017, Pastor Wilson announced that he had accepted a call to Trinity Lutheran in Zanesville, OH. A call committee was formed and it was decided to once again call out of the seminary. Only a few months later we found out that Andrew Belt, his wife Rebecca, and their twin boys were coming to Marshfield. He was installed on June 24th, 2018.

In January of 2019, we paid off our mortgage. The church is officially debt-free. We praise God for all his blessings during our 90+ years.

2020 was an interesting year for our congregation. First the covid-19 pandemic kept us from regular activities for two and a half months. We returned to regular in-person worship on Pentecost. Then, in August, Pastor Daryn announced he had accepted a call to St Paul's in Beatrice, NE. His last service was August 30, 2020. Pastor Belt was affirmed as Sole Pastor at a voter's meeting in October.

Explanation of the Stained Glass ***(in the Sanctuary)***

The windows in the Chancel area of the church and the six windows in the nave of the Church were designed by Professor Richard Caemmerer, artist at Valparaiso University, Valparaiso, Indiana. The windows were fabricated under the direction of Professor Caemmerer by the Conway Universal Studios of Glass of Winona, Minnesota. The artist' Own description of the windows follows:

"In designing and fabricating these windows, I thought of the people at worship and a motif appropriate to the design of the building. What I have done is simply an illustration of the doxology in our Lutheran Hymnal, - "Praise God, from Whom all blessings flow: Praise Him, all creatures here below; Praise Him above, ye heav'nly host; Praise Father, Son and Holy Ghost." This is one of the six great hymns of the church.

We have across the top the symbol of the Trinity. The circle of the Father, then the flame here, and there is a dove shape representing the Holy Spirit. The major dominant theme of the whole top part - not just the circle but the cross is the symbol of the Son which are drops of blood coming from the cross. On the left side as you face the chancel, the blood refers ultimately to the celebration of the Lord's Supper. There is a chalice, a host, the grape and wheat. On the right side is the fire which ultimately refers to the water and the shell of baptism. So, we have described for us the major sacraments. Beneath these we have another reference to a third sacrament from the Lutheran Liturgy and that is the "Word." It is not a Sacrament but it is a sacramental element.

On the right side we have a book with open pages and on the left side we have a scroll from the Old Testament. Beneath that on both sides we have "all creatures here below." On the left side we have the sun and the rain, growing trees, houses, in fact, even factories with smoke coming out - obviously very, very abstract. On the right side we have

the crescent moon and the stars. So you have night and day, sunshine and rain - the whole world in a geodesic glow. Beneath it, representative of all people on earth, are the colors of men - black, red, yellow, white, and brown. In fact, there is a little pagoda shape on the right side and beneath that a family, people, father, mother, son and daughter.

In other words, the window is the faith life of the Christian Church on earth and one over-arching act of praise. I feel it is a happy, joyful, celebrated kind of thing.

The windows in the nave are to carry out further this theme of "Praise God" but this time it is nature and life itself which praises God. Here on the left side of the nave, facing the chancel, the first windows from the rear of the nave is Morning with the sun rising in all its color. The second window with its green and yellows, Nature Growing, represents the springtime of the year. The third window with the sun at its highest point, and its rich colors gives us the season of Summer.

Then, following the windows on the right side to the rear of the nave, the first window shows us the season of Fall, with the sun a little bit lower in the skies and there are the colors of that season. The next window with the sun still lower brings us the season of Winter. This is shown in the grays and blues. The final window brings us to Evening with the setting sun - a bit of color here and there.

But these windows are also life itself! From the last window we turn once more to the chancel area and its windows bringing us the message of salvation in Christ."

Children At Christ

To parents of young children:

God gave children the energy that sometimes causes them to wiggle and make noise. They belong right here with God's people where you have so faithfully brought them. Stick with it! They will only learn how to behave in Church by actually being in Church.

Feel free to sit near the front where it is easier for your little ones to see and hear what is going on. They tire of seeing the backs of others' heads

Quietly explain the parts of the service and actions of the Pastor. We can point you to resources online and in the Church Library that can help you.

Sing the songs and participate in the prayers and responses. Children learn how to worship by watching you.

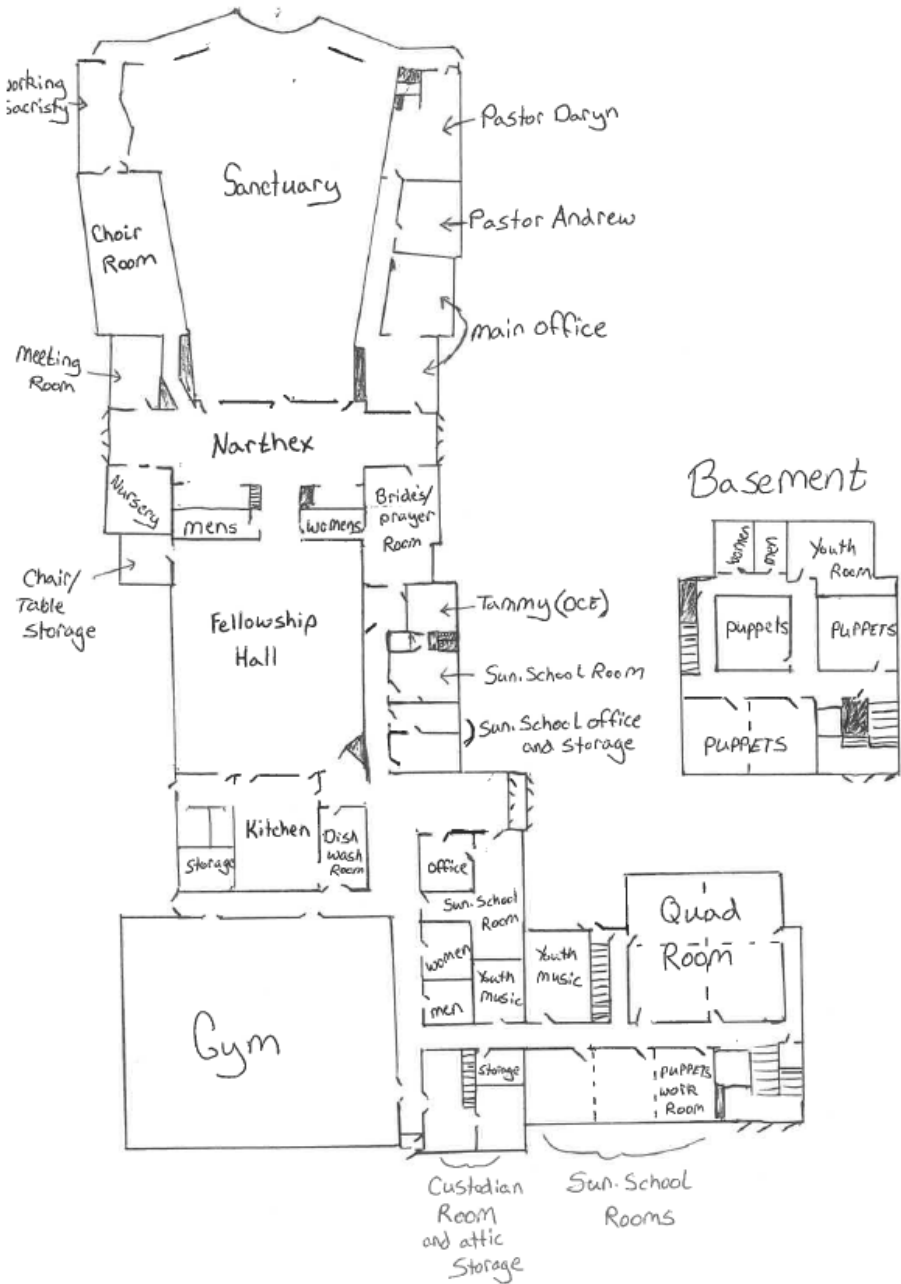
If you must leave service with your child, feel free to do so, but please come back. As Jesus said, "Let the little children come to me." You can hear the service in the Narthex and Fellowship Hall (let us know if you can't and we'll get it turned on).

On most Sundays there will be a children's message at the beginning of the service.

Even when it seems like they (and you!) aren't getting anything out of service, remember:

1. They are absorbing a lot more than you realize
2. They are learning the importance of coming to Church and making time for God's Word and gifts.
3. You still heard God's Word and received the forgiveness of your sins.

Map



est