



WHITNALL PARK LUTHERAN CHURCH
5847 LILAC LANE,
HALES CORNERS, WI 53130

Pastor Fazio: 414-699-9464 / pastor@wplchurch.org
 Adam Fiedler: President
 Connor McMahon: } council@wplchurch.org
 Vice President
 Lisa Douglas: Treasurer
 Rachel Vick: Secretary
 Kathy Fazio: Dir. of Christian Ed.:
 Kathy.fazio@wplchurch.org
 Endowment: Matt Grubis
 Mitchell Rakow: Council Member
 Office: 414-425-1169 / assistant@wplchurch.org
 Website: www.wplchurch.org



**Ann Marie, Grace Carpenter, Ellen Dallmann,
 Julane Gaffney, Jane Dillon-Perkl,
 Leta Klute, Joan Lance, Marilyn Medeiros,
 Laura Mishefske, Paul Nell, Bob Paneitz,
 West Paremski, Elizabeth Posick, John Roe,
 Allen Schubert, Evie Schubert, Kathy
 Sonntag, Randy Timm, Sandy Wiegert,
 Harlow, Meagan, Rhett and Theo, Carol**

Bible Study



**Next Bible Study is Monday
 February 9th at 10:00 am
 and 6:30 pm.**

Come and join us!

ACTIVITY CALENDAR

SUNDAY, FEBRUARY 1ST

8:30 am Worship
 9:30 am Sunday School
 10:30 am Worship

MONDAY, FEBRUARY 2ND

TUESDAY, FEBRUARY 3RD

9:00 am Dorcas

WEDNESDAY, FEBRUARY 4TH

6:30 pm Choir Rehearsal

THURSDAY, FEBRUARY 5TH

6:30 pm AA Meeting

FRIDAY, FEBRUARY 6TH

Office Closed/Pastor Off

SATURDAY, FEBRUARY 7TH

2026 Offering Envelopes

**Envelopes are available for pickup
 in front of the office. Please pick
 them up this week if possible or
 call the office to let me know you
 do not use them.**



Thank you

***They will be moved to the office
 end of week.***

Attendance and In Church Giving Update

Attendance: Week of January 18th - 24th
 Sunday: **118**

Giving: \$ 3,225.00

*Please note this does not
 reflect Vanco EGiving

Altar Flowers

**are placed by Mike and JoAnne
 Baldewicz in honor of their 60th
 wedding anniversary.**



Thank you ~ God Bless!



SOCIAL MINISTRY

Today's coffee hour will benefit **Outreach For Hope**. They support life-giving ministries in the Greater Milwaukee Synod, ELCA.



Unity Lutheran Church is a warming center every night (7pm – 7am) thru March to provide shelter for adults. Seasonal clothing and food donations are in need.

Clothing ministry: hooded sweatshirts, men's gloves, new men's gym socks, backpacks, men's belts, men's jeans (waist size 34" and lower), quilts, blankets, new underwear, shoes, shirts, sweaters, coats, boots, hygiene items (deodorant, foot powder, lotion, body wipes, toothpaste and toothbrushes).

Food pantry: chicken soup, white rice, canned pasta/chicken/tuna, Triscuits, canned fruit (applesauce, peaches, pears), Knorr side dishes (rice/noodle), canned potatoes pasta/mushrooms, olives (ripe/stuffed), condiments (ketchup/mustard/mayo).

Food and clothing donations will be delivered on **Tuesday, February 17th**.



CommUNITY meals are on the first & third Wednesday of each month. Volunteer sign-up sheets are on the bulletin board.

Mt. Meru Premium Tanzanian Coffee

Mt. Meru Premium Tanzanian Coffee will be available for purchase. There is the popular Christmas Traditions Blend (\$18 for a 12 oz bag), which combines 100% Mt. Meru premium Arabica coffee beans with the rich flavors of cinnamon, nutmeg, vanilla, & other spices. It's the perfect seasonal blend for drinking coffee with friends and family. Like previous years, we are offering the versatile holiday 4-pk (\$15) & 6-pk (\$20) samplers. Bags of reg. & decaf coffee (both flavored and unflavored) are also available for \$12. The Mt.



Meru Coffee Project is celebrating a monumental 25th anniversary of a ministry partnership with Tanzanian coffee farmers. Their commitment to fair trade has driven significant growth, impacting the livelihoods of nearly 1,000 farmers and their communities.

THANK YOU TO OUR VOLUNTEERS SUNDAY, FEBRUARY 1ST

***8:30 AM**

Assisting Minister:

Meg Sutton

Altar Guild:

Pat Suderland

Usher:

Connor McMahon

Acolyte:

Mila Leon

***10:30 AM**

Assisting Minister

Kris Laposki

Altar Guild:

Sandy Abraham

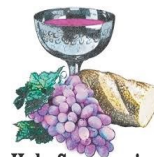
Usher:

Larry Pfeil

Acolyte:

Ethan LeHouiller

COMMUNION



Holy Communion

is offered at the rail on the 1st, 3rd and 5th Sundays of each month and by intinction on the 2nd and 4th Sundays. If you wish to commune in your seat, please pickup communion elements as you enter the sanctuary.



WPLC'S WINTER WEATHER POLICY



If Whitnall schools are closed, the church office will also be closed. Pastor will call closings for worship in to WISN or post on Facebook. Any scheduled meetings will be cancelled at the discretion of the group leader.

