

# **“New Places for ALL People”**

## **The Case for Support**

*A Capital Fund Campaign for New Construction  
and Renovation for  
Stewartstown United Methodist Church*



Stewartstown United Methodist Church  
Stewartstown, York County, Pennsylvania

# Executive Summary

**This Case for Support** is the culmination of several years of investigation, contemplation, consultations with church members and architects to improve the functionality and useability of the Stewartstown United Methodist Church. The Building Exploratory Team was comprised of several dedicated members of SUMC who have met over the past few years and consulted with Pastors Keith Braucher and Ed Zeiders to prepare this document for the members and friends of SUMC.

**The Case for Support contains:**

- Mission, Vision, and Values
- Objectives
- Ministries and Missions
- Construction & Renovation Outcomes
- Preliminary Cost Estimate (Summary of Financial Needs)
- Named Gift Opportunities
- Chart of Gifts
- History of SUMC
- Frequently Asked Questions
- SUMC Leadership Team members
- Preliminary Floor Plans & Architectural Renderings


**The Case for Support** has recently been reviewed and approved by the SUMC Trustees and Church Council. *As such, the Case for Support is now ready to be shared with the SUMC congregation to determine if the Church is ready to launch a Feasibility Study to gauge the support from the Congregation for this project.* You are encouraged to read the details in the Case for Support and look at the floor plans and architectural renderings.

The cost estimate for the renovations, modest build and improvements is approximately \$2M, of which the Trustees have \$500k available for this project. The Building Exploratory Team will host another informational session, to include a Q&A session, the morning of September 30<sup>th</sup> beginning at 9am at SUMC.

*The decision to move forward with a Feasibility Study will be made at the upcoming Church Conference the morning of October 8, 2023. The decision to build will NOT be determined at the Oct 8<sup>th</sup> Church Conference. That decision will be determined after the Feasibility Study has been completed.*


**This Case for Support** has been reviewed and approved by the following leaders of SUMC.

  
Rev. Dr. Keith Braucher, Lead Pastor

  
Rev. Dr. Ed Zeiders, former SUMC pastor and consultant

  
Tyler Madden, Chair, Church Council

  
Ray Manifold, Chair, Trustees

  
Randy Babcock, Chair, Building Exploratory Team

# Mission, Vision, and Values

**The Mission of the United Methodist Church** is to make disciples of Jesus Christ for the transformation of the world. This mission is contextualized in a variety of “Conferences” including the General Conference, Annual Conferences, and the work Church/Charge Conferences of local congregations. All of this is the result of John Wesley’s assertion, “The world is my parish.”

**The Mission of the Stewartstown United Methodist Church** is “To make disciples of Jesus Christ for the Transformation of the World”.

**Core Values:** Additionally, the congregation has placed an emphasis on building authentic relationships and growing in faith for the purpose of serving in the power of God’s love and compassion.

**The Context of the congregation,** or the ministry area, is the region impacted by the Stewartstown congregation which includes Southeastern and South-central York County, and Northern Maryland. It is reasonable to define the context for the congregation to be 30 to 35 miles in any direction.

## **Congregational Strategies:**

### **Connecting: Building Authentic Relationships**

- Reaching out to identify our “neighborhood” and constituencies
- Engaging the community, creating opportunities, and building relationships
- Building partnerships and networks to connect God’s grace with others
- Journeying together with God to increase love, openness, acceptances, learning, and servanthood

### **Growing: Spiritual Formation and Worship**

- Enabling the spiritual growth of each constituent
- An emphases upon Christian Education
- Developing and implementing small groups for growth
- Commitment to the personal and corporate worship of God
- Establishing an effective approach to leadership development
- Assisting in the discovery of each person’s spiritual gifts and practices

### **Serving: Outreach and Caring Ministries**

- A working model of discipleship within the congregation
- A working model of discipleship with the larger community/region
- Supporting and serving within the global network of caring ministries
- Connecting people with similar spiritual gifts to patterns of caring and outreach

# Objectives

In order to achieve our mission, vision, values, and our specific goals, the Leadership Team has established the following objectives:

## **Connecting: Building Authentic Relationships**

- Providing a modern, full-size elevator to accommodate access for all persons
- Establish and maintain a fully functional “Welcome Center”
- Provide a handicap compliant building, including restrooms and ramps
- Upgrading the electrical systems and infrastructure for code and safety
- Significantly upgrade and improve parking facilities and building access

## **Growing: Spiritual Formation and Personal and Corporate Worship**

- Establishing secure, dedicated spaces for nursery and toddler areas
- Additional and flexible educational spaces and resources for all ages
- Additional storage for program resources and events to include Vacation Bible School, Summer Theatre, Elective Studies, Staffing, equipment, and musical instruments
- Informal, impromptu meeting spaces for the congregation and the community

## **Serving: Outreach and Caring Ministries**

- Meeting local and regional human need
- Provide available, safe and efficient office egress in emergency situations
- Provide for privacy and access for counseling and referral services
- Offer community our facilities for refuge in emergency situations
- Space available for networked community groups and agencies
- Space available for mission projects and community service projects

# God at Work: Ministries and Mission

God has blessed the Stewartstown congregation in many and remarkable ways over the generations. Living together in Christian faith and life, faithful discipleship and service has continued to be impactful in our community and the larger region.

The following are examples of the congregation at work through the Spirit of Christ today and in years past.

1. At least ten members of the congregation have been called to ministry, while many others invest their gifts and calling, through the church, to share God's Word and love through music, drama, volunteers in mission, here and abroad.
2. Worship and devotional life are important to congregants and are regularly affirmed and celebrated.
3. Educational opportunities for all ages include Sunday morning classes, informal sharing, weekly Bible Studies and electives, and Discipleship training and events.
4. Small Group worship and sharing takes place in homes, including "The Well" experience in various locations and neighborhoods.
5. The congregation's Prayer Team is consistently functioning and responds to the prayer needs of many within and beyond the life of the congregation.
6. Periodically retreat events are provided for women, men, and young people.
7. Vacation Bible School is another way the congregation provides for the well-being of children in the region.
8. Elementary aged children also participate in age-appropriate programs, including Summer and Sunday Fun-Days.
9. Outreach Ministries to the Community and the Region include but are not limited to the following activities and/or events:
  - a. Community Workdays
  - b. Stewartstown Food Pantry
  - c. Support for Veterans' Helping Hands for the Homeless
  - d. Support for Community of Christian Women
    - i. Bringing families from York to Summer Theatre
    - ii. Life-Path Christian Ministries (former Rescue Mission) Thanksgiving meals
  - e. Support of programming at Life-Path Christian Ministries
  - f. Meals for new mothers

- g. Funeral Meals and Hospitality
  - h. Dorcas Ministry, providing gifts of afghans to groups and individuals
  - i. Martha and Mary Ministry provided meals to anyone in need, both members of the congregation or from the larger community
  - j. Support of the “Community Closet”, an outreach of Grace Fellowship, Shrewsbury
  - k. Members support Habitat for Humanity
  - l. Men’s Sunday School class participates in “Servants” by working on area homes
  - m. Forming neighboring groups to support “Bridge of Hope” families
  - n. Mothers of Pre-schoolers (MOPS) programs
10. Forty-four Years of Summer Theatre at SUMC
- a. Approximately 3,500 youth have participated over the years
  - b. Numerous young people have made commitments to Christ
  - c. The Company of Praise includes youth who have participated in Summer Theatre
11. Youth Ministries
- a. STUNTS is the Youth Ministry of the Congregation
  - b. Youth participate in Summer Theatre, Vacation Bible School, Stewartstown Food Pantry, Helping Hands for the Homeless, and more
12. The Company of Praise (COP)
- a. Public Performances each Year
  - b. Members of the group participate in community outreach through “A Work of Love” (AWOL), Life-Path Christian Ministries, etc.
  - c. COP members and other youth have participated in yearly mission trips and have traveled to fourteen states, some places multiple times
13. The congregation has engaged in many mission trips, including Haiti, Africa, New Orleans, Sandy NJ, Red Bird Mission, Lumberton, NC, and Mexico.
14. Providing spaces for various Community Groups:
- a. Scouts
  - b. Senior citizen groups, Aerobics, and Chair Yoga
  - c. AA Meetings
  - d. Stewartstown Lions Club
15. Leased spaces provide for the Southeastern York County (SEYCo) Nursery School and the Stewartstown Senior Center.
16. The congregation has provided hundreds of congregational dinners and breakfasts over many years.

17. There have been Christmas Cantatas, children's plays, Christmas Caroling, "Deck the Halls" Community nights, and so much more.
18. Congregants have participated in a "Film" ministry, including script writing, acting, directing and producing.
19. Music Ministries
  - a. Choral ministries include the Chancel Choir, Cherub Choir, and Sparks Choir
  - b. The Company of Praise
  - c. Worship Praise Team
  - d. Jubellieres Bell Choir
  - e. Soloists and Ensembles
  - f. Christmas and Easter Cantatas featuring the choirs and community singers, orchestra members, silhouettes
20. Providing spaces for our most cherished moments in life
  - a. Bringing new life through Holy Baptism for infants, young people, and adults
  - b. For those who are finding love and joy through Pre-marriage preparation, weddings, and Marriage Renewal
  - c. Funerals, Memorial Services, and grief-work for those who mourn
21. Interest and Faith Groups borne of Jesus Christ Superstar Initiative
  - a. Women's Book Group
  - b. Seniors Fellowship Group
  - c. Flower Gardening Group
  - d. Hiking Group
  - e. Golfing with God
  - f. Family Camping Group
  - g. Trains and Tunes Group
  - h. Sailing Group
  - i. Craft Beer Appreciation Group
  - j. Cars Maintenance Group
  - k. Baking Group
  - l. Let's Pray Group
  - m. Dementia Support Group
  - n. Midweek Home Fellowship Group
  - o. Quilting Group

## **Summary: Construction and Renovation Outcomes**

1. Modern, large elevator, strategically located
2. Handicapped accessible restrooms upstairs & downstairs
3. A new welcome center/hospitality area with centralized entrance
4. Secure, safe, toddler and nursery areas
5. Additional flexible educational and meeting spaces for all ages
6. Informal, impromptu meeting spaces
7. Exciting children's areas with large and small spaces to play and learn
8. Safe and expanded environment for youth programs
9. Technology upgrades
10. More efficient and secure office spaces that allow for confidential counseling, pastoral care, quiet work areas, and safe exit.
11. Additional storage spaces for musical instruments and equipment, chairs, tables, program supplies and materials, etc.
12. Improved visibility of congregational activities to our community
13. Comfortable spaces for the congregation and the larger community
14. Ample spaces for planning, daily activities, and the variety of groups that use our church facilities
15. Quiet dedicated library space, not used for meetings and random storage
16. Community refuge in emergency situations
17. Energy efficient new windows for our sanctuary
18. Upgraded electrical systems to handle the construction and renovation projects
19. New heating system (boiler) for sanctuary and main building
20. Re-paved parking lot

# Summary of Financial Needs

## New Construction and Renovations to Existing Building:

**Upper Level:** Covered, double door handicap accessible entrance, Welcome/Hospitality area, full-sized larger elevator, new ADA compliant restrooms, renovated toddler and nursery rooms, outdoor deck adjacent to the Hospitality area..... **\$610,000**

**Lower Level:** Multipurpose room with storage, new ADA compliant Restrooms, wider hallway by elevator, improved accessibility throughout, covered patio, re-graded front lawn with gradual ramp leading to lower level (no stairs), level lawn adjacent to patio and landscaping..... **\$710,000**

## ITEMIZED COSTS

Professional Services, Permits, and related costs.....	\$120,000
Re-surface the Parking Lot.....	\$100,000
Electrical Service Upgrades.....	\$50,000
Replacement Boiler.....	\$50,000
Contingency, Escalation, and Change Orders.....	\$350,000
Capital Campaign Costs.....	\$10,000
TOTAL CAMPAIGN COSTS.....	\$2,000,000

## Named Gift Opportunities

*Named gifts are a significant opportunity for donations to the Capital Fund Campaign when the Campaign is affirmed and launched. One or more persons, families, or groups may make a “named gift” in honor or in memory of someone, including historic persons within the history and life of the congregation. Named gift opportunities will be a part of the Feasibility Study interviews for those who may be interested at that time.*

### ***Upper Level: Entry Area***

Named Gift Opportunities	Suggested Gift Amount
Covered, Double-Door Entrance	\$40,000
Elevator	Subscribed
Lobby Area	\$60,000
Restrooms, ADA Compliant (2)	\$20,000 each
Handbell Storage Cabinets	\$5,000

### ***Welcome/Hospitality Area***

Named Gift Opportunities	Suggested Gift Amount
Hospitality/Meeting Area	\$70,000
Café (Kitchenette and Seating)	\$25,000
Tables and Chairs (4)	\$2,000 each
Benches and Couches (7)	\$2,000 each
Table and Chairs Storage Closet	\$5,000
Elevated Outdoor Deck	\$50,000

### ***Childcare Area***

Named Gift Opportunities	Suggested Gift Amount
Large Childcare Room	\$20,000
Small Childcare Room	\$10,000
Restroom	\$15,000
Supplies and Décor	\$2,000

### ***Office Area***

Named Gift Opportunity	Suggested Gift Amount
Exterior Door from the Pastor’s Office	\$5,000

**Lower Level**

Named Gift Opportunities	Suggested Gift Amount
Multi-Purpose Room	\$100,000
Restrooms, 2 each, ADA Compliant	\$25,000 each
Improved Accessibility to eliminate steps, improve ramps	\$10,000
Storage Closet for Tables and Chairs	\$8,000
Heating System, Replace Boiler	\$50,000

**Outside**

Named Gift Opportunities	Suggested Gift Amount
Covered Patio	\$50,000
Level Graded Lawn Area	\$10,000
Walking Paths and Ramps (3)	\$10,000 each
Aluminum Handrails	\$10,000
Center Circle (Main Street Elevation)	\$25,000
Benches, Outdoor (6)	\$5,000 each
Shrubs, Planter Boxes	\$2,000 each
SUMC, Cross/Flames (3)	\$10,000
Re-pave the Parking lot	\$100,000

## Proposed Chart of Gifts

**Project Goal:                   \$2,000,000**  
**Money Already in Hand:       \$500,000**  
**Capital Campaign Goal:       \$1,500,000**

Number of Gifts	Amount	Total	Cumulative Total
<b>1</b>	<b>\$300,000</b>	<b>\$300,000</b>	<b>\$300,000</b>
<b>1</b>	<b>\$200,000</b>	<b>\$200,000</b>	<b>\$500,000</b>
<b>3</b>	<b>\$100,000</b>	<b>\$300,000</b>	<b>\$800,000</b>
<b>6</b>	<b>\$50,000</b>	<b>\$300,000</b>	<b>\$1,100,000</b>
<b>8</b>	<b>\$25,000</b>	<b>\$200,000</b>	<b>\$1,300,000</b>
<b>8</b>	<b>\$20,000</b>	<b>\$160,000</b>	<b>\$1,460,000</b>
<b>10</b>	<b>\$10,000</b>	<b>\$100,000</b>	<b>\$1,560,000</b>
<b>10</b>	<b>\$8,000</b>	<b>\$80,000</b>	<b>\$1,640,000</b>
<b>10</b>	<b>\$5,000</b>	<b>\$50,000</b>	<b>\$1,690,000</b>
<b>12</b>	<b>\$4,000</b>	<b>\$48,000</b>	<b>\$1,738,000</b>
<b>12</b>	<b>\$3,000</b>	<b>\$36,000</b>	<b>\$1,774,000</b>
<b>12</b>	<b>\$2,000</b>	<b>\$24,000</b>	<b>\$1,798,000</b>
<b>15</b>	<b>\$1,000</b>	<b>\$15,000</b>	<b>\$1,813,000</b>
<b>Others</b>			
<b>108 Donors</b>			

*A Chart of Gifts is designed to help prospective donors to determine in what range of gift they may consider. Actual commitments will not be made until at least January/February 2024*

*Note that the lead gift, \$300,000 has already been received, restricted, and invested.*

**Notes for Consideration:** The total number of active donors in 2022 for Stewartstown United Methodist Church, and for all causes, was 235 (220 units) and for a grand total of \$480,699.70. The active number of donors in 2023, and for all causes, is 175 (166 units) and for a grant total of \$281,026.82 through September 10, 2023.

# History of Stewartstown United Methodist Church

1839: The Union Associate Church, built by Reformed, Lutheran, Methodist, Presbyterian, and Baptist members at a cost of \$1,200, was located in Mechanicsburg (former name of Stewartstown).

By a happy coincidence, the church stood where our present building stands today.

1846: Bible Classes held at Leib home in Hopewell Township. Hopewell Methodist Church established near Leib School, south of Stewartstown.

1873: Outgrowing the log building used as the church, the congregation moved to town as the Stewartstown Methodist Episcopal Church. This was the two-story "Brick Church" which stood on Main Street until 1961 on the present site of the Orchard Village Shopping Center (location of the new Aviator Brew Hub). The parsonage was one door south on the former bank lot, soon to be a coffee shop.

1876: A congregation of another branch of Methodism built the "Frame Church" on the site of our present parsonage. Stewartstown Methodist Protestant Church had evolved from the Baptist group in the old Union Church. The "frame Church" stood until 1963, serving in its last years as the first home of the Mason-Dixon Library. The parsonage was the house at 12 West Broadway.

1939: The Methodist Union attempted to join the Methodist Episcopal (ME), Methodist Protestant (MP), and the Methodist Church South. The local ME and MP renamed themselves First and Calvary Methodist, respectively, and continued their separate ways.

September 15, 1955: Stewartstown Methodist Church came into formal existence at a Quarterly Conference. A building committee was formed the same day.

Services were held on alternate months in the two old church buildings while the congregation moved forward to raise \$393,000 over the next 13 years.

March 10, 1957: Groundbreaking for the new church began after razing the building which had housed the Stewartstown Elementary and High School

August 1959: The church, with sanctuary in the rough, was completed at a cost of \$258,439. Special services were held August 30<sup>th</sup> to consecrate the education unit with the District Superintendent, the Rev. Dr. Edgar Henry, and the Rev. Henry Hilt Crane as speakers.

January 1, 1960: Members of Zion Church were welcomed into our Church Membership. The first Zion building was razed, and a memorial stone marks the spot in the cemetery on Route 851, going southeast from Stewartstown.

September 3, 1961: The interior sanctuary work was completed at a cost of nearly \$57,000. The consecration service was held November 18, 1962, with Bishop Vernon Middleton, preaching.

September 6, 1962: A new building committee was authorized to plan a new parsonage with the eventual cost being \$33,682. The Rev John W. Stamm and his family moved into the completed parsonage on October 9, 1963.

November 3, 1968: The new Moller Pipe Organ was dedicated at a cost of \$32,462. The debt was erased through weekly contributions in building pledge envelopes with the final push of a legacy gift of \$27,607 from the estate of M. Ashton Conway of New Freedom whose family had belonged to the old Hopewell Church.

1968: With the merger of the Methodist Church and the Evangelical United Brethren Church, our new name officially became the Stewartstown United Methodist Church.

May 29, 1983: Groundbreaking services were held for a new Education Building at a cost of \$232,000.

December 18, 1983: The cornerstone was placed into the new facility. The congregation began using the new Educational Wing in April, 1984, even though it was not completed until May, 1984.

June 3, 1984: The new Educational Wing was dedicated as "Heritage Hall."

2004: The "Campaign for the Future", with a goal of \$351,229. The project included the boiler replacement, organ repair/upgrades, kitchen upgrades, heating/AC for the sanctuary, fellowship hall, music area, digital projection system with drop-down screen in the sanctuary, fellowship hall ceiling replacement, and re-carpeting of the platform area of the chancel.

2013-2014: A sound system upgrade was completed in the sanctuary at a cost of \$65,000 provided through earmarked monies and donations.

2016: A new air conditioning system was installed for the sanctuary costing \$33,500.

2017-2018: A new roof was installed over the sanctuary for \$40,000. Sanctuary lighting upgrades, elevator upgrades, and new exterior doors were installed at a cost of \$35,000.

2019-2020: Sanctuary chairs and new chairs for classrooms were purchased and the roof over the nursery, toddler rooms, and the library was replaced, along with a new ceiling and lighting in Fellowship Hall, Main Street Narthex, and Nursery/Toddler rooms, for a cost of \$35,000. Additionally, a new HVAC system for Heritage Hall was installed for \$25,000. A 7'x12' enclosed trailer (\$3,800) and a new "zero-turn" mower (\$4,500) were gifted to our church by members. A Baby Grand Piano was purchased for \$8,000 (\$6,000 of this was gifted by SUMC members and friends).

In 2020, SUMC staff and members started programs to provide basic food items to those in need operating out of our church. In early 2021, recognizing that the facilities of our church were being stretched with this growing ministry, members of our congregation purchased the home and detached 3-car garage at 10 Church St. The garage was renovated to house the current Food Pantry ministry.

2021-2022: Upgrades to the network computer system (Office 365 Migration) were accomplished, including laptops, monitors, and wall-mounted TV's. Upgrades were made to the security and camera systems, new ceilings and lights for the music ministry hallway, for approximately \$55,000.

Additional projects included the removal of four large trees in the front yard for a cost of \$3,500, HVAC replacement for the office area (\$7,600), and a new Gas Furnace and Condenser (\$8,600).

2022: A Summer Theatre performance of "Jesus Christ Superstar" was staged at Allegro Winer, working with a budget of \$247,000. The congregation contributed \$11,000 toward it in addition to providing the use of all material resources available and the use of the church facilities for planning, storage, rehearsals, meal preparations, and more.

January-June, 2023: The Fellowship Hall kitchen, library/parlor, and Music Room were renovated at a cost of approximately \$75,000 all of which was provided by member donations.

# Frequently Asked Questions

## Introduction:

Ten years ago, donations were received for a full-sized elevator. A special Church Conference, held in the fall, 2014, granted approval for the Trustees to investigate installing an elevator, ramp, generator, and parking lot lighting. As a result, the Trustees hired an architect, determined a possible location for the elevator, along with initial cost estimates.

Next, the architect engaged an electrical and a structural engineer to determine electrical and structural needs for the elevator project and prepared detailed drawings. A request for proposal was forwarded to six contractors, with proposals received from three contractors. Each proposed bid exceeded the available funds for the project. In March 2015, a presentation was made to the congregation following a worship service that the Trustees were putting the project on hold.

In 2016, the Trustees voted to move forward with exploring a larger project. A Case for Support was prepared. Subsequently, a Feasibility Study was conducted. The results of the Feasibility Study revealed that the goal of \$4.5 million could not be supported by the congregation. The congregation voted not to move forward.

In September 2019, The Church Conference approved a “Resolution Regarding the Future Renovations and New Construction of the Church Facilities,” which authorized the Trustees to begin the process of exploring a smaller project to include an elevator, ADA compliant restrooms on upper and lower levels, a hospitality area, a designated main entrance from the parking lot, and a downstairs multi-purpose room adjacent to Fellowship Hall. Because of COVID, the project was put on hold. In 2022, as the pandemic was finally waning, the Trustees resumed the project.

## Frequently Asked Questions:

### 1. Why do we need to build or change anything?

The church facilities are 65 years old. It has the original sanctuary windows, a freight elevator that we use for transporting materials and people, inadequate storage and closets, and a building that is not American Disabilities Act (ADA) compliant. Further, the building entrance is undefined, there is no common area for gathering, and rooms for children, youth, and adult activities are inadequate.

### 2. How will this project provide tools for ministry for Jesus?

Our facilities should be welcoming and accessible for all people. Older adults and those who are physically challenged have difficulty navigating stairs and narrow hallways, thus limiting their involvement, and not accommodating their needs. Further, our facilities are very busy, and our rooms are often used every day and many evenings of the week. Since it is often

difficult to schedule events and meetings, adding additional spaces will accommodate more ministry and events for our church groups and the community.

3. With whom did the Trustees meet to obtain ideas about this project?

In 2015, the Trustees interviewed multiple groups, including persons from the following ministry areas:

- a. Music Department
- b. Christian Education
- c. Youth Ministries
- d. Theatre Leadership Team
- e. Staff: Pastoral and Administrative
- f. Staff-Parish Committee
- g. Sexton (Past and Present)
- h. Outreach Ministries
- i. SEYCo
- j. Stewartstown Senior Center

In 2022, the Church Council conducted a survey of the congregation. The survey results regarding our facilities were given to the Trustees.

4. What were the results of the meetings and the congregational survey?

The results of the survey revealed common themes and needs from the congregation and groups:

- a. Multipurpose room
- b. Additional storage
- c. Gathering and greeting area(s)
- d. Enhanced staff offices
- e. Additional meeting spaces
- f. Focus on media and technology
- g. Full-sized elevator
- h. ADA accessibility and compliance

5. Were youth included in the planning process?

Yes, members of the youth group, Summer Theatre, and the music departments were included in the initial interviews. Each had the opportunity to participate in the church-wide survey.

6. Will any of the projects be energy efficient? Geothermal? Solar?

Replacing the sanctuary windows with energy-efficient windows in the same style is included with this project and will reduce heating and AC needs. Discussions about solar energy are being explored, especially since we have a large sanctuary roof facing south. Geothermal will be explored as well.

7. How would a Capital Funding Campaign impact the life of the congregation and the regular giving of members and constituents?

A Capital Campaign would be considered a “second mile” gift, above and beyond the regular giving of each donor.

8. What would be the impact of a building project on ministries such as Summer Theatre, and our outreach?

The time frame for renovations/construction has not been determined yet. Depending on the construction timeframe and scope of the project, Summer Theatre may have to relocate for a season. Other ministries may also have to relocate during construction. This could be within the church itself, a temporary trailer, or remote locations.

9. Will this project lead to an increase in membership?

We pray that these changes will be advantageous and inviting for congregational growth and for greater effectiveness in our ministries and mission. As the project unfolds, people may want to “check it out”.

10. Why did we choose the architect we have working with us?

In 2015, the Trustees contacted Grace Church in Shrewsbury, Fawn UMC in Fawn Grove, and Stewartstown Presbyterian to obtain recommendations. As a result of those interviews, the Trustees chose Jack Althouse, who had been designing faith-related facilities since 1990. His firm had worked on over 100 ecclesiastical projects across the country.

Mr. Althouse’s firm listened to members of the congregation and translated our thoughts into a beautiful plan. However, the church determined, based on the Feasibility Study that was conducted in 2016/2017, not to move forward due to the cost.

In 2019, when the church decided to pursue a scaled-back project, the Trustees went with Jack Althouse. However, because of health issues, Mr. Althouse is no longer able to work. The Trustees have chosen to utilize the firm Jack Althouse worked for, MG Architects.

11. Will we be able to utilize church-related businesses to work on the project?

Yes, as much as possible, depending upon negotiations with the contractor, liability, and other matters.

12. Will we be able to use church members and other volunteers for some of the labor (painting, etc.)?

Yes, as much as possible, depending upon negotiations with the contractor, liability, and other matters.

13. Will we use an architect and building contractor in tandem for the design phase?

Yes. The architect has interpreted the project (vision) and the contractor will attach a price to the project and possibly offer alternatives that work with our existing building and are cost effective. The two together will work with the building committee and congregation to give SUMC the best possible design for the very best cost.

14. What is the cost estimate for this project?

The full project is estimated to cost \$2 million. The architect and the builder (to be determined) will help us explore our options.

15. Who is involved with the decision whether to move forward with this project?

This project started with the Trustees and was delved into by the Building Exploratory team. Their recommendations will be forwarded to the Trustees and Church Council for review and approval. The congregation will be involved following the United Methodist Disciplinary process to ensure participation and mandated votes to move forward.

16. How will the congregation pay for these renovations and construction?

As a starting point, the congregation has received a major designated gift for the installation of a full-sized elevator. A proposed Capital Fund Campaign will be presented to the congregation, and will invite our members, constituents, and friends to make commitments through a multi-year program. Additional funding may come through grants, matching gifts, and in-kind participation. Our intention is not to borrow funds to pay for this with the exception of short-term gap funding.

17. Will the congregation be able to use grants to help pay for the project?

Yes, as noted above. Some grant possibilities are already being identified, including ADA compliance, senior program or facilities grants, and children ministries. Seeking and securing grants will be part of the Capital Fund Campaign.

18. How will the project impact the Sanctuary?

There are no current plans to re-configure the sanctuary itself, but there will be new windows (similar design) and a new side entrance to the sanctuary on the east side.

19. Will the project include any additional land or impact the current lot?

There are no current plans to acquire more land. The project is limited to church-owned property.

20. Are there any plans for building a new church or an addition?

At this time there are no plans to build a new church. Much depends upon the congregation, for new facilities would provide more spaces for ministry, mission, and the community. This project is limited as described above.

21. Will the project be adding a new building? What about demolition?

The scope of this project includes a modest addition and renovations to our existing church. There will be some demolition of existing walls to accomplish this project. No buildings are being torn down.

22. Would this project make the facilities ADA compliant?

To the extent possible, yes. That is one of the main purposes of this project.

23. Will this project happen in phases?

No. The current plan is to conduct the project in a single phase.

24. Is a common area or greeting area included in the plans? What about a porch or portico?

Yes. The plans include a hospitality/welcome area, a deck on the upper level and a patio on the lower level. (See the cover page for illustrations and appendix for floor plans.)

25. Do the Trustees have a timeline for any construction and renovation?

With the appropriate Church Conference approvals, construction could begin in mid to late 2024.

26. What funds are currently available?

The Trustees have been setting funds aside for many years in four accounts: the elevator, sanctuary A/C, sanctuary roof, and sanctuary windows. The sanctuary A/C project was completed in 2016. The sanctuary roof was completed in 2017. Members and friends have been contributing to the Elevator and Construction funds for many years as well. Currently, the two remaining funds and Construction Fund now total over \$500,000. We anticipate needing an additional \$1.5 million to complete this project.

# SUMC Leadership Teams

## **Building Exploratory Team**

Randy Babcock, Chairperson  
Ginger Babcock  
Jeff Beatty  
Janice Bosley  
Pat Dablock  
Dave Hebel  
Susan Herbert  
Ray Manifold  
Craig Sansonetti  
Joe Shanabrough  
Rev. Dr. Ed Zeiders, Consultant (non-voting)

## **Board of Trustees**

Ray Manifold, Chairperson  
Jeff Beatty  
Chuck Bosley  
Bryan Cooper  
GJ Emge  
Dave Hebel  
Laura Manifold  
Joseph Shanabrough  
Mary Sloat

## **Church Staff**

Rev. Dr. Keith Braucher, Lead Pastor  
Janice Bosley, Church Administration  
Susan Herbert, Treasurer  
Joe Reed, Music Ministries  
Gary Schwinn, Sexton  
Connie Zetterman, Church Secretary

## **Finance Committee**

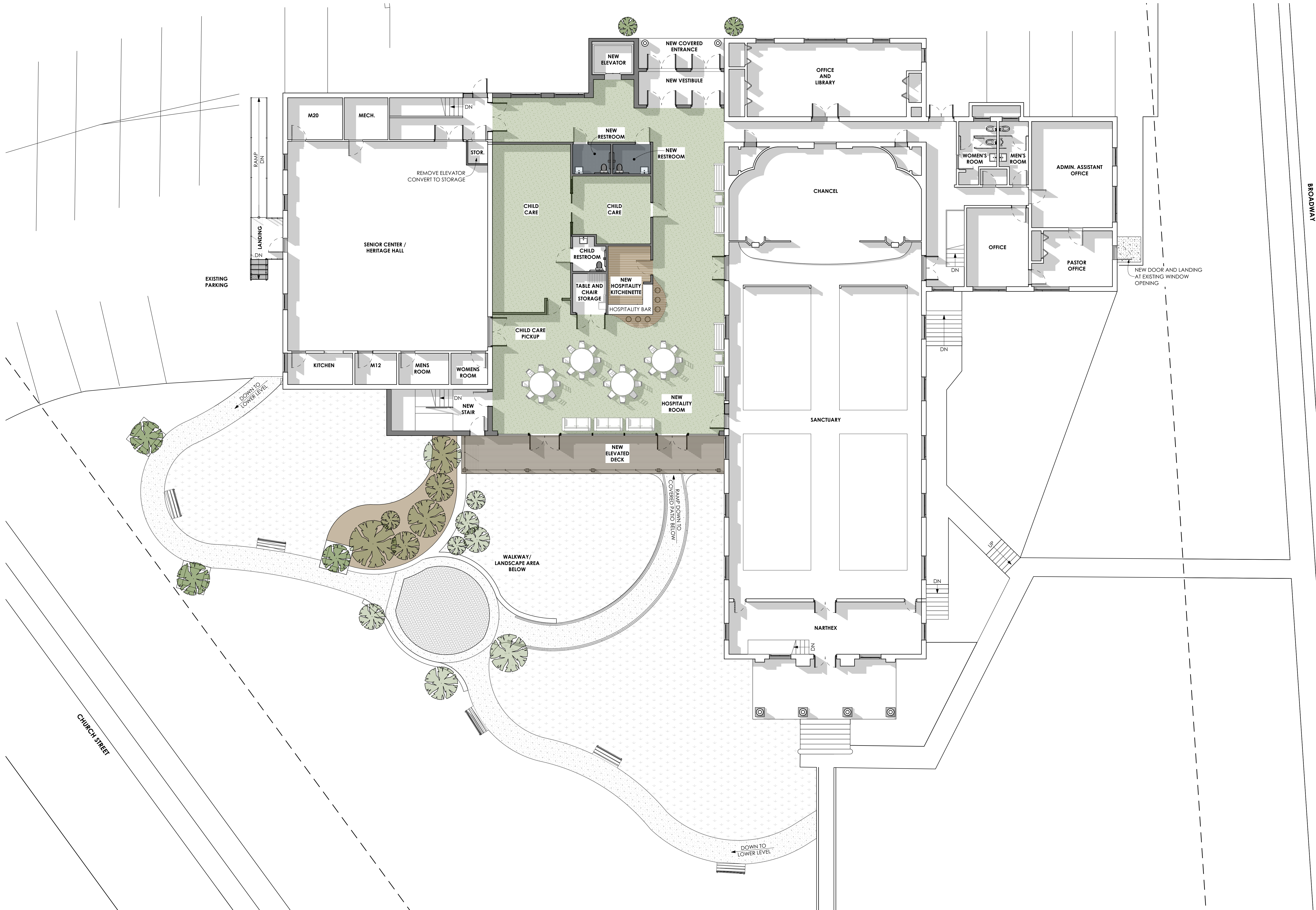
Steve Schwartz, Chairperson  
Janice Bosley  
Ernie Cottrell  
Susan Herbert  
John Lawrence  
Jean Manifold

## **Staff/Pastor-Parish Relations Committee**

Janet-Graab-Miller, Chairperson  
Jan Allen  
Joe Dablock  
Holly Herbert  
Kim Hoyt  
Andrea Sharar

## **Church Council**

Tyler Madden, Chairperson  
Janice Bosley, Vice-Chair & Lay Leader  
  
Julie Allen, Member at Large  
Janet Fisher-Byers, Outreach Chairperson  
Lay Member to Annual Conference  
Susan Herbert,  
Church Treasurer and Lay Leader  
Ray Manifold, Trustee Chairperson  
Lori Plasterer, Secretary of the Council  
Steve Schwartz, Finance Chairperson  
Carole Tice, Chairperson,  
Summer Theatre Board of Governors  
Derek White, Member at Large  
Yvonne Wickowski,  
Lay Member to Annual Conference



FIRST FLOOR PLAN  
SCALE: 1/8" = 1'-0"

STEWARTSTOWN UNITED METHODISTCHURCH

