

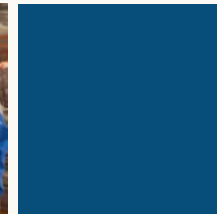
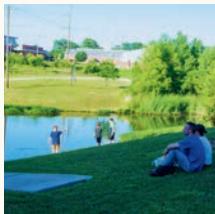


# NEXT



# STEP

# 2030



# CLAREMORE FMC

[claremorefmc.org](http://claremorefmc.org) | 918.341.4580

1615 N. Hwy. 88 | Claremore, OK 74017

Heartland Conference of the Global Methodist Church

## Highlights from the past year



**17,175**

Neighbors fed at our Food Pantry



**19%**

Growth in worship attendance

*...'Truly I tell you, just as you did it to one of the least of these who are members of my family, you did it to me.'*

*Matthew 25:40*



**5,435**

Neighbors shopped at our Free Clothes Closet



GMC Annual  
Conference Leadership

# Dear Claremore First Methodist Church family,

Claremore First Methodist Church has been serving God and the people of Rogers County, Oklahoma for 151 years (since 1874). We began as a mission long ago, and we continue to serve as a mission outpost within our community. The church has been faithful across the years to discern where God was leading for the future. The church facility grew from a tiny frame building to a wonderful 28-acre central campus which the church developed in 1991. Since 2000, the church has experienced 300% growth, added seven new worship communities and celebrated the addition of over a thousand new believers. Community outreach has expanded in the form of active recovery ministries, a million-dollar school supply drive for Rogers County, maintaining seven apartments for the homeless, and a compassion ministry which feeds 1,400 neighbors a month.

Our 4.6-million-dollar Children's Center was completed and dedicated in 2006. A few years later saw the addition of the Vance Memorial Upward Sports fields with the Bill Moss Memorial Pavilion. In January 2017, Jaimie Willis began preaching at our new south campus, Vessel Church, and it has become a vital ministry of CFMC with many baptisms and new members joining us!

The Covid pandemic beginning in 2020, as well as the disaffiliation process from a former denomination three years later, created great challenges for the congregation to navigate. However, the church has trusted the faithfulness of God and continued in ministry together. Thanks be to God; the clouds have lifted and we have affirmed that the best years of our church's ministry are still ahead.

As a Global Methodist congregation, the church is growing once again. In May 2025, we had the honor of hosting the GMC Heartland Annual Conference, welcoming 493 attendees from 211 churches! And now, we celebrate *the opportunity to take the next step in our adventure with Jesus Christ!*

We believe that an important part of our church's Next Step toward the future involves an addition to and modification of the facility at our central campus, as outlined here for prayerful consideration. We are grateful for this opportunity and privilege of taking this “next step” as a congregation.

Faithfully Serving Together - Dr. Ray Crawford, 8-15-2025



# Our vision

---

We have identified the following projects as ways we can grow and support the mission and ministry of Claremore First Methodist Church



## ***Christian Neighbor Center***

**Claremore First Methodist is known in the community as “the church that helps people.”** We want to continue helping people and extending the love of Jesus Christ in the future! In order to care for our growing community, we need to expand our facilities to include a structure that will accommodate our growing ministry.

The new facility will be approximately 11,000sq/ft and be positioned on the north lawn of the church. It will be a "stand-alone" building, connected to the current facility by a covered breezeway. The west end of the new facility will be home to our new Christian Neighbor Center. The CNC will house our community food pantry and clothing closet, with additional storage for food and a loading dock for food delivery trucks.

The NE Oklahoma Food Bank has said they will deliver the food to our site if we have a loading dock -- that will be a game-changer! Small offices for having meaningful conversations with neighbors will be included in the new facility. Our goal is to grow into a "neighbor's choice" facility, where neighbors have the opportunity to select their own food. This will cut down on waste and preserve the dignity of the neighbors we serve. We estimate the cost for this construction project to be approximately \$3 million dollars.



## ***Remodel and Refurbish for Growth***

The central campus houses a large worship center, and also serves as a ministry center for dozens of vital ministries for both the congregation and the broader community. Recent growth in worship has created the need for more space in our Disciple Hall gathering area. In addition, the interior of the Disciple Hall has become dated over the course of 35 years and needs redecorating.

Approximately three quarters of our worshipping community enters through our Disciple Hall and moves into our central sanctuary. Our worship attendance has climbed again to just over 1,100. While a little more than 1% of our Rogers County population is with us in worship we can again envision the possibility of growing our in-person congregation to 2% of our county's population. How wonderful it will be to have another 1% of our neighbors connect with us in worship and discipleship! The movement in and out of worship, the surrounding aesthetics, and the culture of hospitality will be vital to our new worshipper's experience. To create a more functional space, Disciple Hall can be opened up by restructuring the current office area.

In addition to our Disciple Hall, there are other areas within our existing church building that need attention. Our Remodel committee has identified the need for: new carpet in the sanctuary, sound system upgrades in both the sanctuary and Family Life Center, remodeling final bathroom, parking lot repairs, and kitchen remodeling. Also, a large "pole barn" storage facility is to be included. Costs are still being determined.

## ***Retirement of Debt***

On May 5, 2023, the congregation borrowed money to purchase our current property and buildings. The remaining balance on that disaffiliation loan is just over \$550,000 (term 15 years at 7% interest). An additional goal is to retire that loan, our only debt. To do so will free up \$6,000 a month for vital ministries.

In closing: the total cost to fully fund this vision debt free is estimated to be \$6,000,000. Our Next Step 2030 goals will help our church keep moving forward.

Many of our leaders believe that the timing is very good. It's time for CFMC to take the next step!

*Let us pray... Gracious Lord, thank you for calling us out of darkness and into your marvelous light. Thank you for the tremendous blessing of our local church, a blessing that was passed on to us by generations who have gone before us. We pray that we might be faithful in continuing to care for our neighbors, and in offering them the invitation to experience the same blessed new life which we have experienced in Jesus Christ, your greatest gift of all. Amen.*

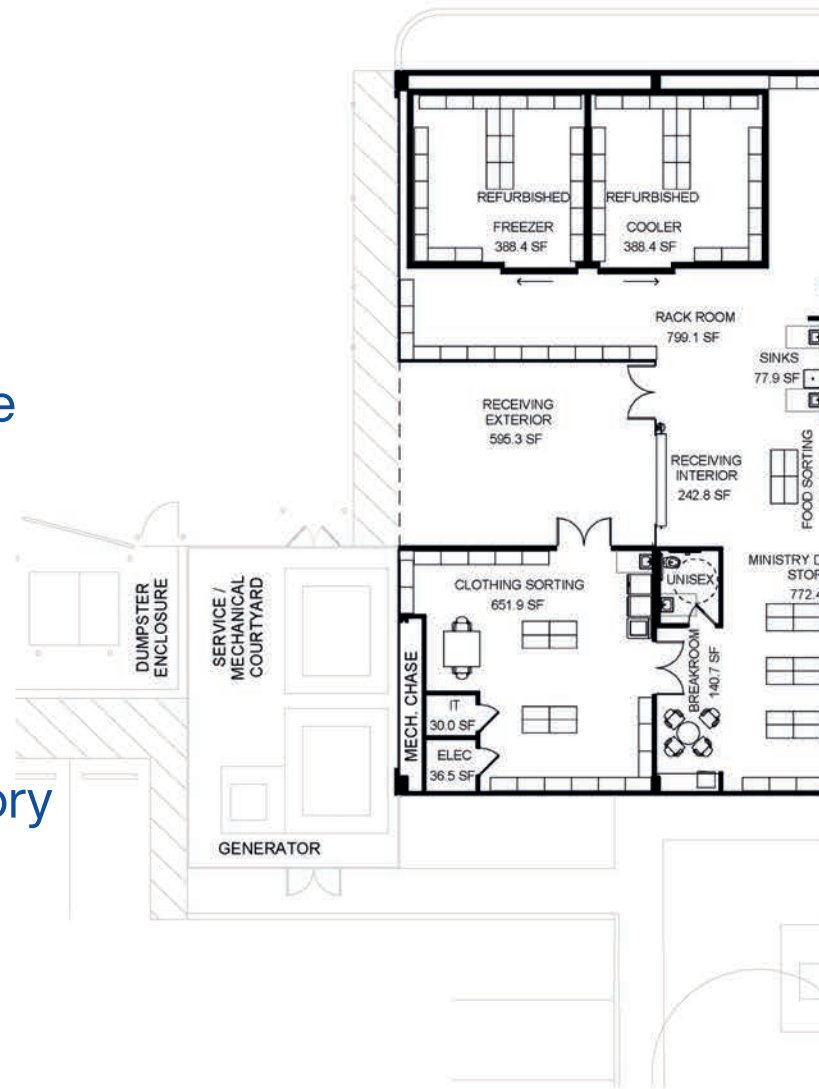
# *Our vision*

## *Christian Neighbor Center*

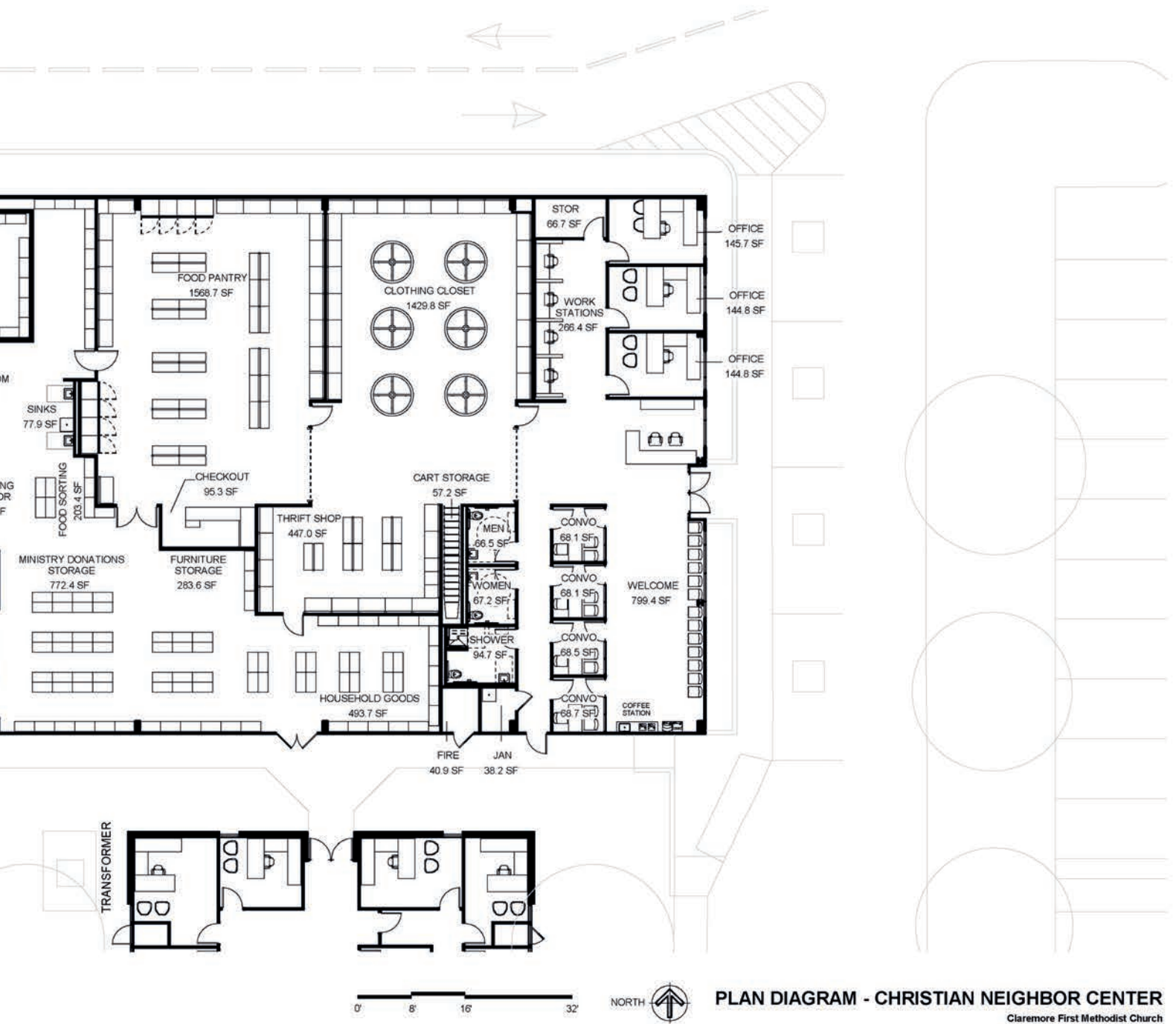
**\$2,978,925**

**(excludes furniture & fixtures)**

- Neighbor-Choice Food Pantry (allows neighbors to select own food)
- Clothing Closet & Household Items
- Furniture assistance as available
- Financial Appts to help with utilities
- Short term emergency housing
- Amazing Grace Apartments for homeless
- Prayer and time to hear their story
- Invited to worship services, church meals and recovery ministries



**[ narrate ]** © 2025



**PLAN DIAGRAM - CHRISTIAN NEIGHBOR CENTER**

Claremore First Methodist Church

10.01.25

Concepts

1615 OK-88, CLAREMORE, OKLAHOMA 74017

# *Our vision*

---

## ***Disciple Hall Expansion***

**\$1,456,772/ \$1,706,000 (excludes furniture & fixtures)**

- Expanded Disciple Hall to ease crowding
- Redesigned Welcome Desk
- Updated Hospitality Area & color scheme





# Neighbor-Choice Food Pantry

Food for our Community in our Christian Neighbor Center



[ narrate ]

© 2025





## INTERIOR RENDER - CHRISTIAN NEIGHBOR CENTER

Claremore First Methodist Church

09.19.25

Concepts

1615 OK-88, CLAREMORE, OKLAHOMA 74017

# Campaign Timeline

## April 2025

- Draft Vision Case Statement
- Host First Impression Gatherings (FIGs) with ministry & financial leaders

## May 2025

- Conduct financial and ministry leader interviews and surveys
- Revise Vision Case Statement from feedback
- Choose an Architect

## July – August 2025

- Launch one-on-one conversations
- Meetings with Architect continue
- Involve Kids and Student ministries

## September - October 2025

- Host lead gift gatherings
- Churchwide 28-Days of Prayer Guide (Oct. 26 - Nov. 23)
- Receive pledges for at least 60% of the \$6 million goal

## ● June 2025

- Host All Church meeting June 8 and launch churchwide survey
- Compile feedback from FIGs and churchwide survey
- Present feasibility-readiness study findings to church leaders

## ● November – December 2025

- Churchwide 28 days of Prayer through Nov. 23
- Commitment Sunday Nov. 23 for Campaign Pledges 2026-2028 & Annual 2026 Church Pledges
- Pie Night Nov. 30 to celebrate pledges continuing to arrive in December

## ● Spring – Summer 2026

Continue work with architect

## ● Fall – Winter 2026

Break Ground and begin construction



# 3-Year Giving Profile

## Commitment Profile - \$6,000,000

No. Gifts at Level	Gift Level	Total at Level	Cumulative Total
1	1,000,000	1,000,000	1,000,000
1	500,000	500,000	1,500,000
2	250,000	500,000	2,000,000
6	100,000	600,000	2,600,000
6	75,000	450,000	3,050,000

**16 Potential Commitments = \$3,050,000 or 50.8% of Total**

No. Gifts at Level	Gift Level	Total at Level	Cumulative Total
7	60,000	420,000	3,470,000
8	50,000	400,000	3,870,000
12	36,000	432,000	4,302,000
15	25,000	375,000	4,677,000
17	18,000	306,000	4,983,000

**59 Potential Commitments = \$1,933,000 or 32.2% of Total**

**75 Potential Commitments = \$4,983,000 or 83.1% of Total**

No. Gifts at Level	Gift Level	Monthly	Total at Level	Cumulative Total
20	14,400	400	288,000	5,271,000
25	10,800	300	270,000	5,541,000
30	7,200	200	216,000	5,757,000
30	3,600	100	108,000	5,865,000
45	1,800	50	81,000	5,946,000

**150+ Remaining Potential Commitments = \$1,017,000 or 17.0% of Total**

**225+ Total Potential Commitments = \$6,000,000 or 100% of Total**

**NOT EQUAL GIFTS BUT EQUAL SACRIFICE**

### **1. What happens if we don't raise enough money? Will we take on long term financing?**

If we don't raise the necessary funds we will have two options: complete only as much as we're able with the funds we have in the bank, or borrow the balance to complete the entire project. If the Administrative Council were to recommend borrowing money to complete the project, the amount will be much less than if we needed to borrow the entire amount. However, the goal is certainly to raise all we need so that we don't have to borrow any money.

### **2. What happens if we raise more than our goal?**

Our Next Step 2030 Committee will propose new possibilities to the Administrative Council for the church to consider as we take the next step in our adventure with Jesus Christ!

### **3. When will the work begin?**

The Finance Committee will coordinate with the Trustees, architect, and Next Step team to determine when funds may be released for each project phase to begin in 2026 or early 2027.

### **4. Will we complete projects only as funds become available or will we take on short term financing if we have pledges to back it up?**

The Finance Committee and Trustees will communicate and propose to the Administrative Council any plan for a short-term loan. While the goal is to complete all of this debt free, it is likely we will take on very short-term financing in order to complete the work sooner.

### **5. What is the cost of doing nothing?**

Rogers County is growing, and our church is growing. We are in a great position to plan for the future! If we do nothing, we lose an important opportunity to keep our church moving forward in mission and ministry. Lost people matter to God. Hungry people matter to God. Let's take our next step!

### **6. How big will the Christian Neighbor Center be and will it be constructed in such a way that we can easily expand should need arise?**

While no final decisions have been made, the initial proposal from our architect includes a one-story building that covers approximately 11,000 sq. ft. Some rooms within the facility can be adapted as needed. Discussions concerning the possibility of expansion are on-going.

### **7. How will a capital campaign impact giving to the annual operating budget?**

A capital campaign is giving above and beyond our current tithes to the operating budget. While we would not expect increases to the operating budget for the next three years, if our new facility improvements create excitement and help the church to grow, we believe that over time the giving to the operating budget will also grow.

### **8. When should we begin giving to the campaign?**

We are excited to share that we have already received \$384,802 from generous members who are excited to see this work begin. If the Lord stirs you to give now, we would never want to stifle that. But we want the entire church to undergo an intentional prayerful process before each household makes its commitment. Certainly, any exceptional gifts offered in advance will give us momentum for the public phase of our campaign in October/November 2025. We will be asking the entire church to make their commitments in November and begin paying on those commitments around that time or at the first of the year.

# Creative Strategies for Giving

There is a role in this campaign for every person who calls Claremore First Methodist Church their home church. Every single contribution enables our success. You will not be pressured or told what you should give, but rather encouraged to pray to discern God's will for your giving. We won't give equal amounts, but we are equally invited into prayerful, sacrificial generosity whatever that means for each of us.

A few things to consider as you pray about how to give:

## **Remember that small gifts add up**

By giving smaller amounts at higher frequencies – weekly, semi-monthly, or monthly – large gifts can be reached in smaller steps. Setting up automated giving online at <https://claremorefmc.org/tithes-and-offerings> can make small gifts part of your regular routine.

## **Give from a heart of gratitude**

See this as an opportunity to express gratitude in a tangible way. Intentional lifestyle adjustments can free up resources to give and may help achieve other goals. Examples include canceling streaming or unused subscriptions and memberships, limiting eating out, and generally assessing wants and needs by creating and sticking to a budget.

More substantial gifts may come from bigger family sacrifices, such as:

- Postponing major expenditures such as cars, home projects or trips.
- Carving out a portion of commission income, bonuses, or raises.
- Redirecting other income from interest, dividends, or rental properties.

## **Include kids and students**

Adults are not the only ones who are interested in or will benefit from this project. This is a great opportunity to teach our kids about honoring the Lord through a habit of sacrificial generosity. We encourage you to talk and pray as a family about engaging in this campaign. We would love our kids and students to know they have a meaningful part to play in fulfilling our mission together.

## **Make giving a habit**

For those who have never made giving to the Lord through the church a habit, what a perfect time to use this opportunity to get started! The idea of tithing may feel like an unattainable goal, so start small. Commit to giving a smaller percentage of your income and increase it gradually on an annual basis. This will help ease you into the habit. As the church takes on this significant commitment, we will need the renewed strength that comes from first-time givers to help us reach our goals.

### **Consider gifts other than cash**

Gifts other than cash include stocks, bonds, annuities, property, and other assets.

### **Special tax-free IRA gifts**

For those aged 70½ and older, it is possible to make tax-favorable charitable gifts from certain types of IRA accounts. A total of up to \$108,000 per year (as of 1/1/2025) can be transferred directly from IRAs to qualified charities such as our church, free from federal income tax. There also may be some state income tax savings. For those who have begun taking their Required Minimum Distribution (RMD), donations given in this way count toward their RMD for the year of the gift.

To take advantage of this benefit, please contact your tax preparer or financial institution on the most effect way to make the RMD donation directly from the IRA to the church. Then contact the ClaremoreFMC financial office to notify them that this gift has been initiated.

### **How will you respond?**

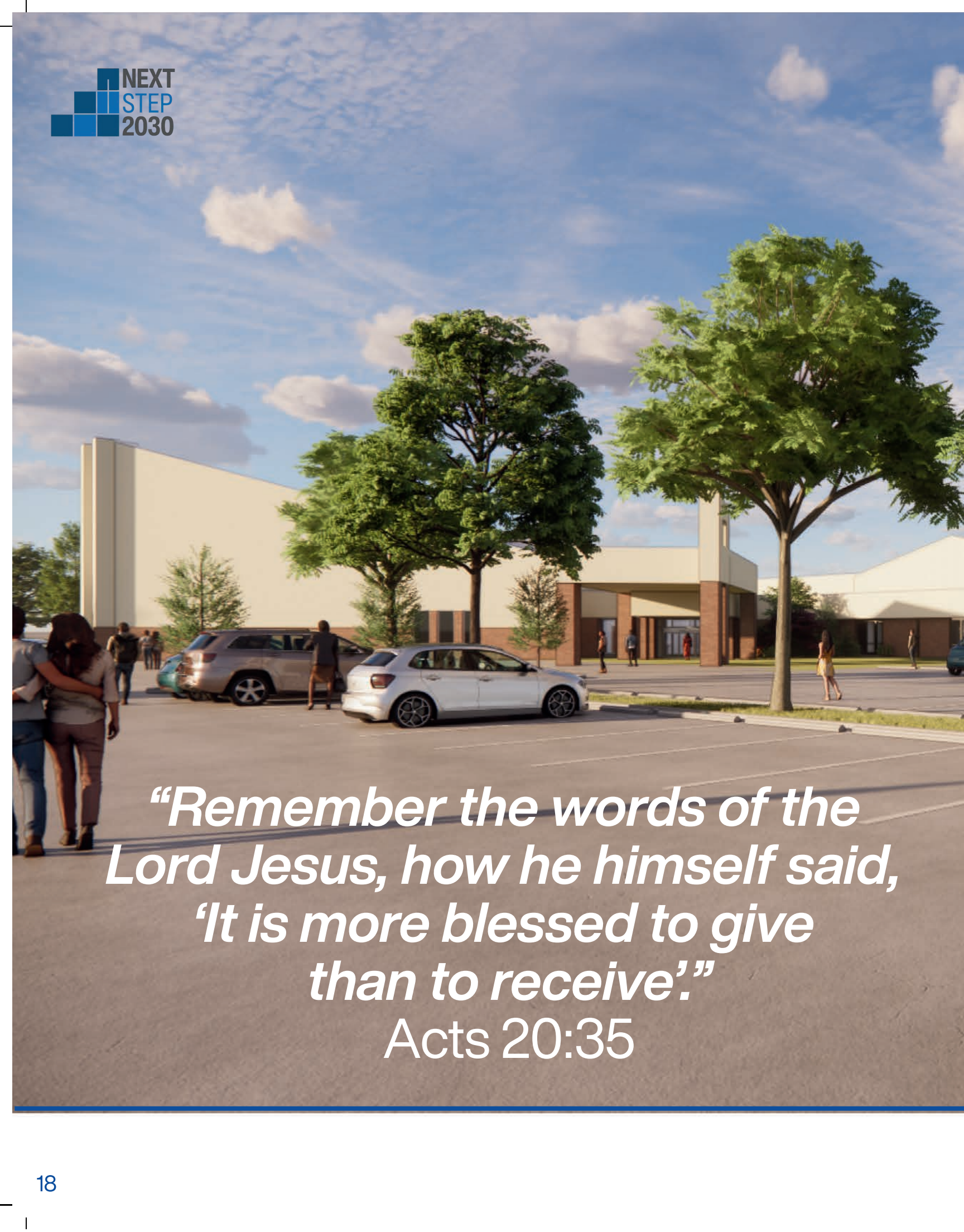
We are “inviting everyone to take the next step in their adventure with Jesus Christ” as grateful and generous people of Claremore First Methodist Church and Rogers County. We encourage you to express your gratitude to God by partnering with your church in our growing together to care for the spiritual and practical needs of each other and our community. We are now kicking off a three-year effort to fully fund this dream!

To fund this dream, we need your help. This simply might not happen without everyone’s participation. Thank you for prayerfully and creatively taking part in this dream. We are the body of Christ and can do this together!

### **Three requests of you:**

- Will you prayerfully seek the Lord and ask what amount your family will sacrificially give toward this building project (beyond your regular giving) over three (3) years (2026, 2027, 2028)?
- Will you plan to make your 3-year pledge on or before our special commitment Sunday on November 23, 2025?
- Will you consider front-loading your pledge as best as you are able? This will enable us to get started sooner on the building project.

As you seek the Lord about this decision, you may desire further conversation with our pastors or other church leaders. More conversations are welcomed. Please call the church at 918-341-4580 for an appointment with a pastor or our financial office.



*“Remember the words of the  
Lord Jesus, how he himself said,  
‘It is more blessed to give  
than to receive’.”*  
Acts 20:35





# CLAREMORE FMC



GIVE to Next Step 2030:

